

Data Path : Z:\pestpcbsrv\HPCHEM1\FID_B\Data\FB062918\
 Data File : FB016481.D
 Signal(s) : FID2B.CH
 Acq On : 29 Jun 2018 17:34
 Operator : MJ/SJ
 Sample : 20 PPB GRO STD
 Misc :
 ALS Vial : 16 Sample Multiplier: 1

Instrument :
 FID_B
 ClientSampleId :

Integration File: Calibration.e
 Quant Time: Jul 02 09:38:33 2018
 Quant Method : Z:\pestpcbsrv\HPCHEM1\FID_B\Method\FB060118.M
 Quant Title :
 QLast Update : Thu Jun 28 12:22:11 2018
 Response via : Initial Calibration
 Integrator: ChemStation

Volume Inj. : 5 g/ml
 Signal Phase : RTX-502.2
 Signal Info : 60mx0.53mmx3.00um

Compound	R.T.	Response	Conc Units

System Monitoring Compounds			
5) s AAA-TFT	9.120	160924	22.898 ng/ml
Target Compounds			
1) t 2-Methylpentane	4.970	404899	33.390 ng/ml
2) t 2,2,4-Trimethylpentane	7.734	413719	35.724 ng/ml
3) t n-Heptane	8.075	118958	10.869 ng/ml
4) t Benzene	8.214	175923	11.848 ng/ml
6) t Toluene	10.969	389759	31.400 ng/ml
7) t Ethylbenzene	13.419	136624	9.761 ng/ml
8) t m-Xylene	13.552	294121	19.324 ng/ml
9) t O-Xylene	14.283	319047	20.445 ng/ml
10) t 1,2,4-Trimethylbenzene	16.566	369024	21.426 ng/ml

(f)=RT Delta > 1/2 Window

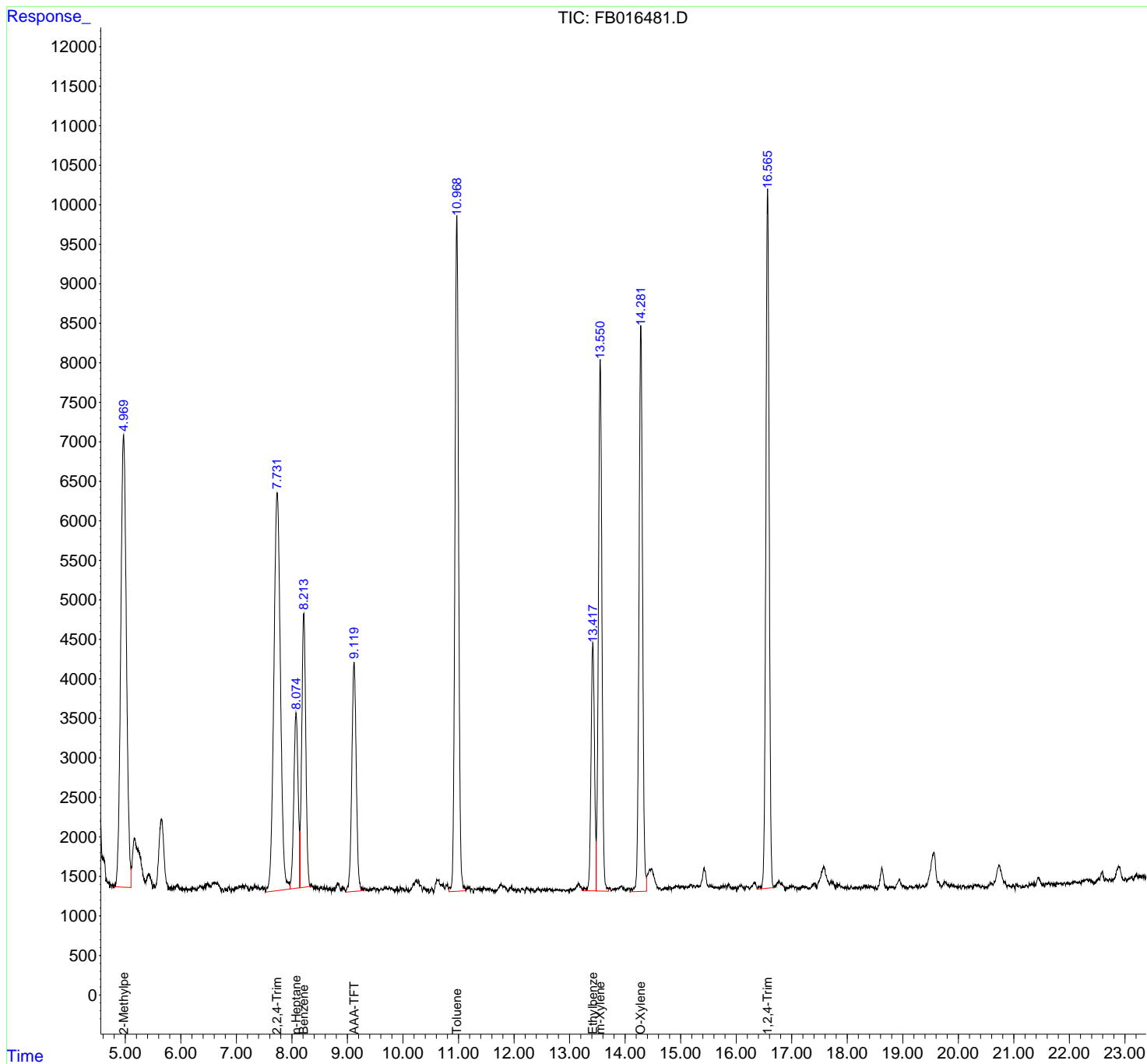
(m)=manual int.

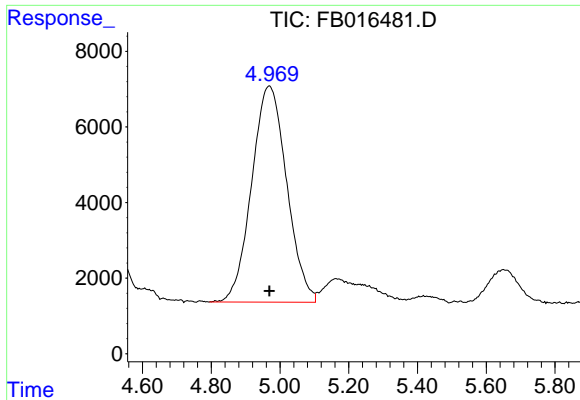
Data Path : Z:\pestpcbsrv\HPCHEM1\FID_B\Data\FB062918\
 Data File : FB016481.D
 Signal(s) : FID2B.CH
 Acq On : 29 Jun 2018 17:34
 Operator : MJ/SJ
 Sample : 20 PPB GRO STD
 Misc :
 ALS Vial : 16 Sample Multiplier: 1

Instrument :
 FID_B
 ClientSampleId :

Integration File: Calibration.e
 Quant Time: Jul 02 09:38:33 2018
 Quant Method : Z:\pestpcbsrv\HPCHEM1\FID_B\Method\FB060118.M
 Quant Title :
 QLast Update : Thu Jun 28 12:22:11 2018
 Response via : Initial Calibration
 Integrator: ChemStation

Volume Inj. : 5 g/ml
 Signal Phase : RTX-502.2
 Signal Info : 60mx0.53mmx3.00um

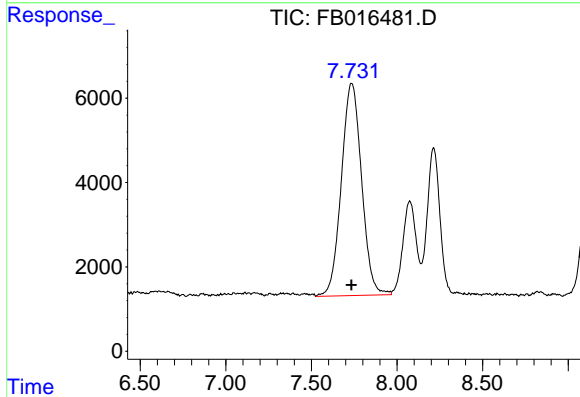




#1 2-Methylpentane

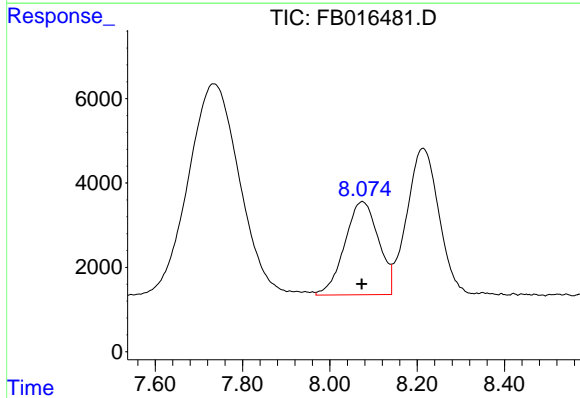
R.T.: 4.970 min
 Delta R.T.: 0.000 min
 Response: 404899
 Conc: 33.39 ng/ml

Instrument :
 FID_B
 ClientSampled :



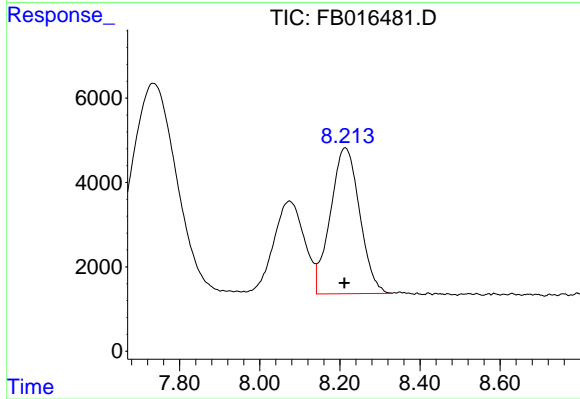
#2 2,2,4-Trimethylpentane

R.T.: 7.734 min
 Delta R.T.: 0.000 min
 Response: 413719
 Conc: 35.72 ng/ml



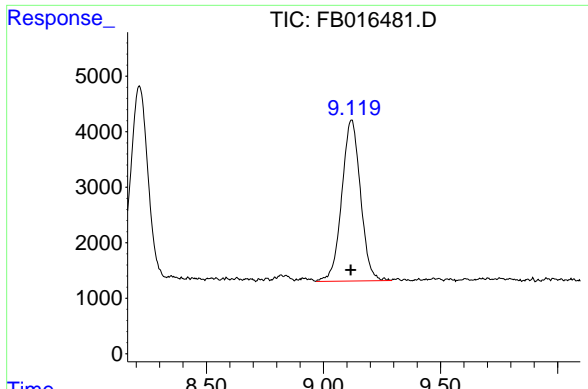
#3 n-Heptane

R.T.: 8.075 min
 Delta R.T.: 0.002 min
 Response: 118958
 Conc: 10.87 ng/ml



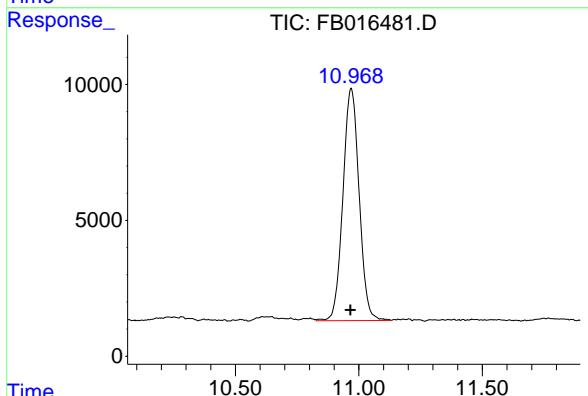
#4 Benzene

R.T.: 8.214 min
 Delta R.T.: 0.002 min
 Response: 175923
 Conc: 11.85 ng/ml

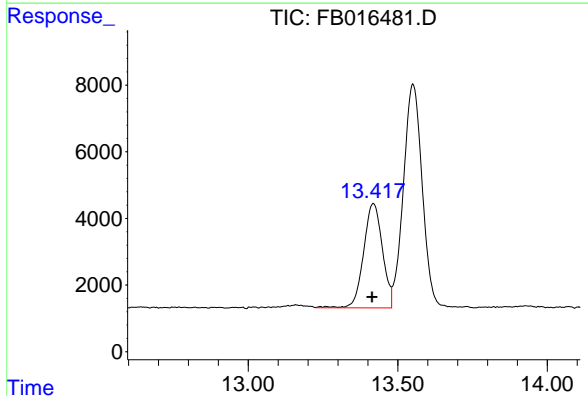


#5 AAA-TFT
 R.T.: 9.120 min
 Delta R.T.: 0.003 min
 Response: 160924
 Conc: 22.90 ng/ml

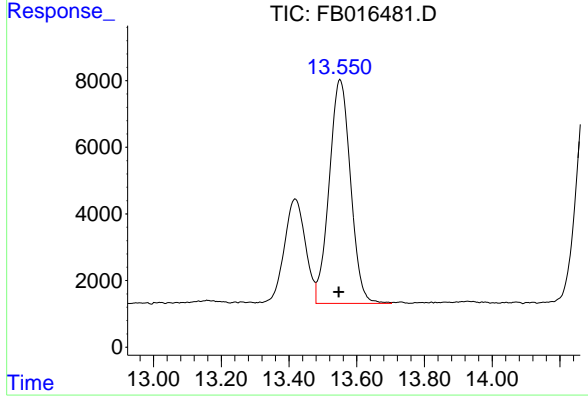
Instrument :
 FID_B
 ClientSampleId :



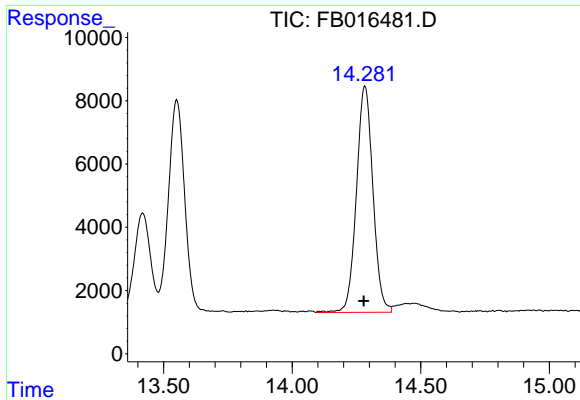
#6 Toluene
 R.T.: 10.969 min
 Delta R.T.: 0.004 min
 Response: 389759
 Conc: 31.40 ng/ml



#7 Ethylbenzene
 R.T.: 13.419 min
 Delta R.T.: 0.004 min
 Response: 136624
 Conc: 9.76 ng/ml



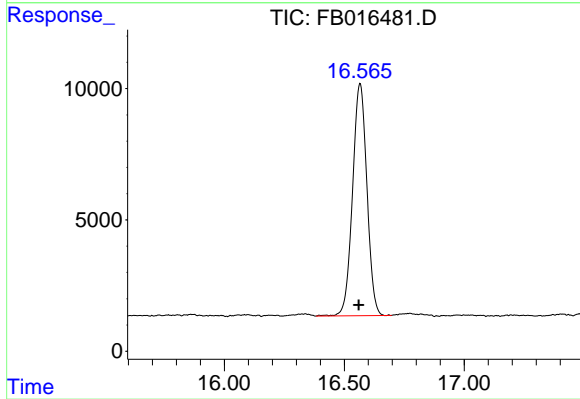
#8 m-Xylene
 R.T.: 13.552 min
 Delta R.T.: 0.004 min
 Response: 294121
 Conc: 19.32 ng/ml



#9 O-Xylene

R.T.: 14.283 min
Delta R.T.: 0.005 min
Response: 319047
Conc: 20.44 ng/ml

Instrument :
FID_B
ClientSampleId :



#10 1,2,4-Trimethylbenzene

R.T.: 16.566 min
Delta R.T.: 0.005 min
Response: 369024
Conc: 21.43 ng/ml