

Data Path : Z:\pestpcbsrv\HPCHEM1\FID_B\Data\FB063025\
 Data File : FB031964.D
 Signal(s) : FID2B.CH
 Acq On : 30 Jun 2025 9:27
 Operator : YP/AJ
 Sample : 20 PPB GRO STD
 Misc :
 ALS Vial : 1 Sample Multiplier: 1

Instrument :
 FID_B
 ClientSampleId :
 20 PPB GRO STD

Integration File: Calibration.e
 Quant Time: Jul 01 01:06:27 2025
 Quant Method : Z:\pestpcbsrv\HPCHEM1\FID_B\Method\FB062325.M
 Quant Title :
 QLast Update : Mon Jun 23 13:56:54 2025
 Response via : Initial Calibration
 Integrator: ChemStation

Volume Inj. : 5 g/ml
 Signal Phase : RTX-502.2
 Signal Info : 60mx0.53mmx3.00um

Compound	R.T.	Response	Conc Units

System Monitoring Compounds			
5) s AAA-TFT	8.789	310657	20.136 ng/ml
Target Compounds			
1) t 2-Methylpentane	4.699	627902	24.681 ng/ml
2) t 2,2,4-Trimethylpentane	7.413	731735	27.134 ng/ml
3) t n-Heptane	7.747	210402	8.433 ng/ml
4) t Benzene	7.885	268908	7.909 ng/ml
6) t Toluene	10.619	925316	25.877 ng/ml
7) t Ethylbenzene	13.057	274429	8.691 ng/ml
8) t m-Xylene	13.190	568165	17.322 ng/ml
9) t O-Xylene	13.918	542191	17.469 ng/ml
10) t 1,2,4-Trimethylbenzene	16.193	462517	17.493 ng/ml

(f)=RT Delta > 1/2 Window

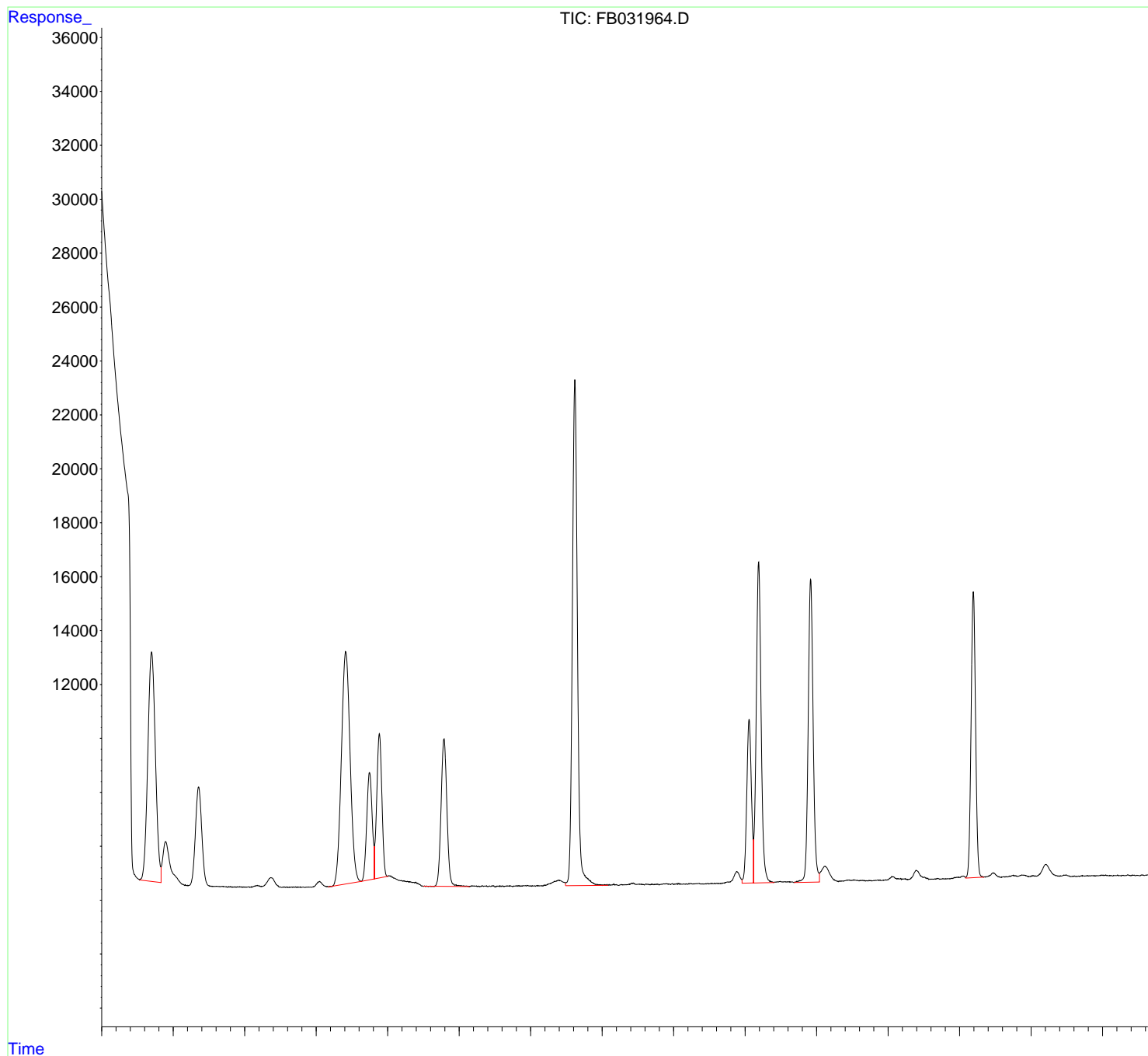
(m)=manual int.

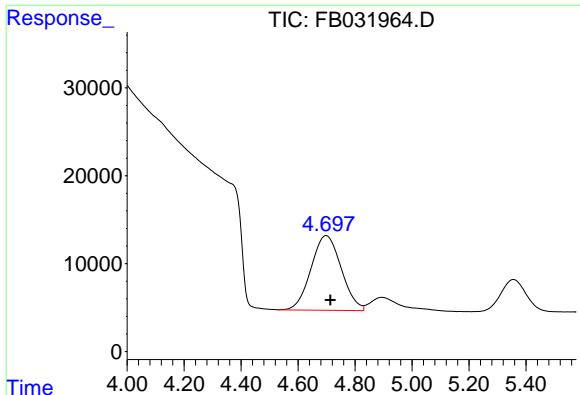
Data Path : Z:\pestpcbsrv\HPCHEM1\FID_B\Data\FB063025\
 Data File : FB031964.D
 Signal(s) : FID2B.CH
 Acq On : 30 Jun 2025 9:27
 Operator : YP/AJ
 Sample : 20 PPB GRO STD
 Misc :
 ALS Vial : 1 Sample Multiplier: 1

Instrument :
 FID_B
 ClientSampleId :
 20 PPB GRO STD

Integration File: Calibration.e
 Quant Time: Jul 01 01:06:27 2025
 Quant Method : Z:\pestpcbsrv\HPCHEM1\FID_B\Method\FB062325.M
 Quant Title :
 QLast Update : Mon Jun 23 13:56:54 2025
 Response via : Initial Calibration
 Integrator: ChemStation

Volume Inj. : 5 g/ml
 Signal Phase : RTX-502.2
 Signal Info : 60mx0.53mmx3.00um

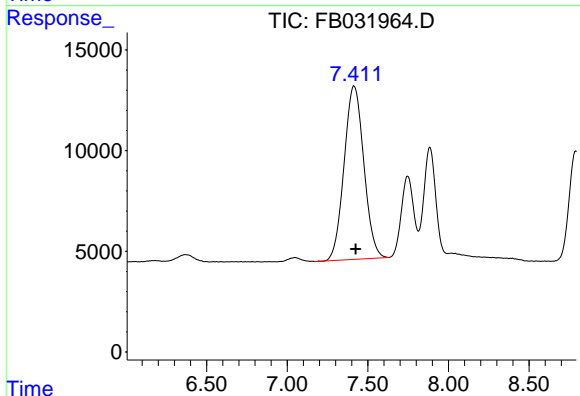




#1 2-Methylpentane

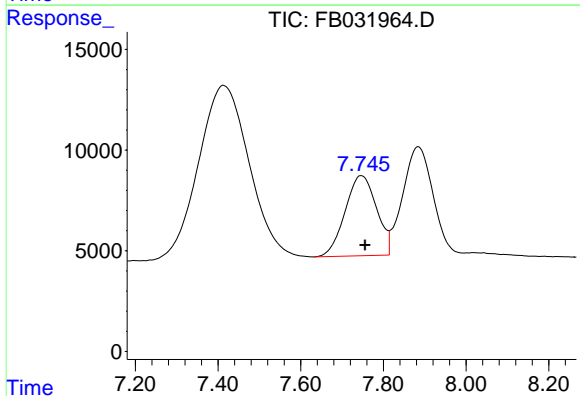
R.T.: 4.699 min
 Delta R.T.: -0.014 min
 Response: 627902
 Conc: 24.68 ng/ml

Instrument :
 FID_B
 ClientSampleId :
 20 PPB GRO STD



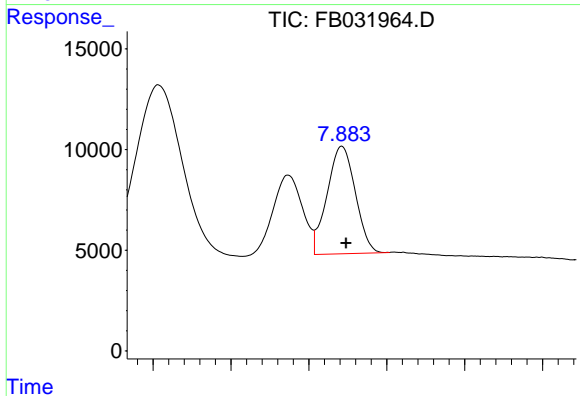
#2 2,2,4-Trimethylpentane

R.T.: 7.413 min
 Delta R.T.: -0.013 min
 Response: 731735
 Conc: 27.13 ng/ml



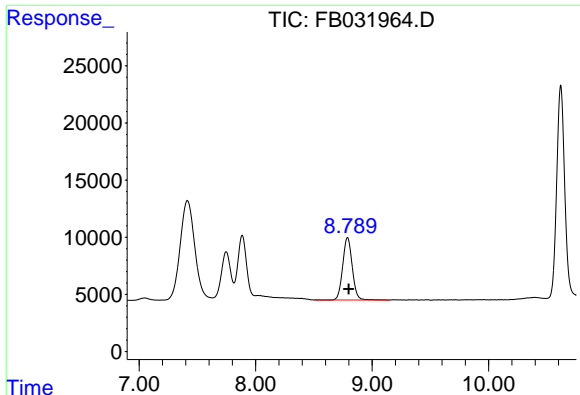
#3 n-Heptane

R.T.: 7.747 min
 Delta R.T.: -0.009 min
 Response: 210402
 Conc: 8.43 ng/ml



#4 Benzene

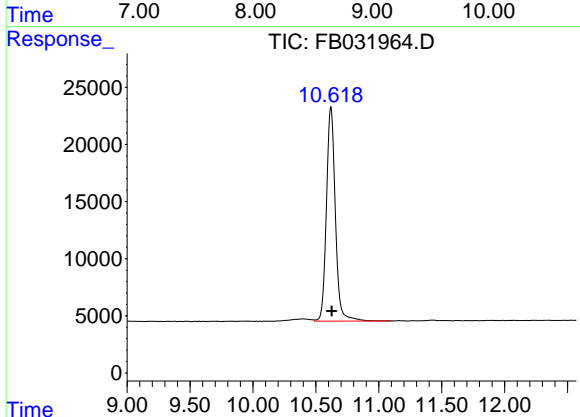
R.T.: 7.885 min
 Delta R.T.: -0.011 min
 Response: 268908
 Conc: 7.91 ng/ml



#5 AAA-TFT

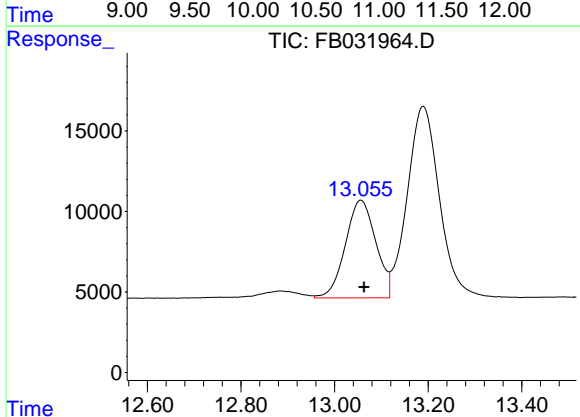
R.T.: 8.789 min
 Delta R.T.: -0.009 min
 Response: 310657
 Conc: 20.14 ng/ml

Instrument :
 FID_B
 ClientSampleId :
 20 PPB GRO STD



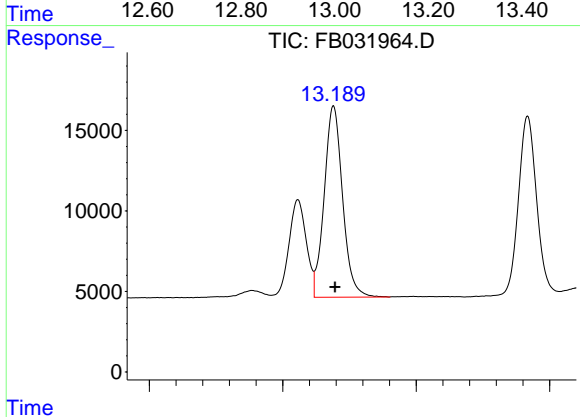
#6 Toluene

R.T.: 10.619 min
 Delta R.T.: -0.007 min
 Response: 925316
 Conc: 25.88 ng/ml



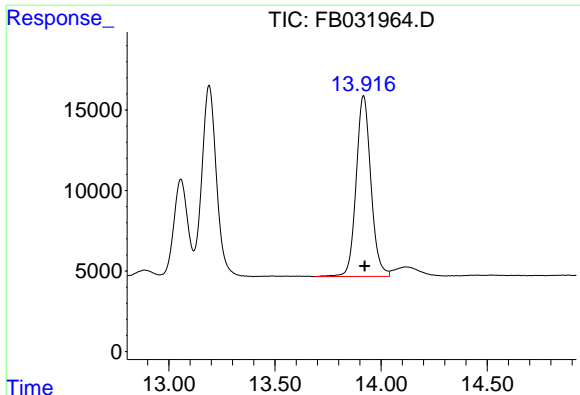
#7 Ethylbenzene

R.T.: 13.057 min
 Delta R.T.: -0.006 min
 Response: 274429
 Conc: 8.69 ng/ml



#8 m-Xylene

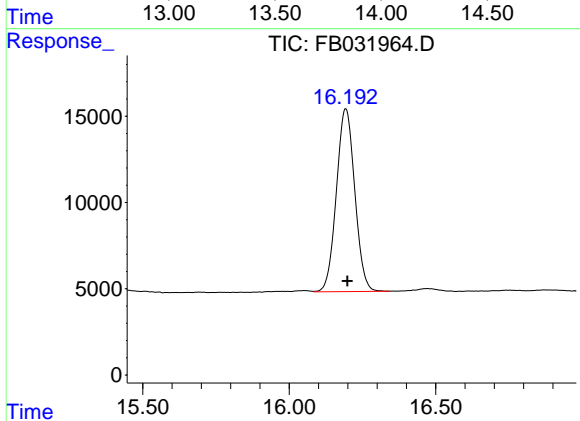
R.T.: 13.190 min
 Delta R.T.: -0.006 min
 Response: 568165
 Conc: 17.32 ng/ml



#9 O-Xylene

R.T.: 13.918 min
Delta R.T.: -0.005 min
Response: 542191
Conc: 17.47 ng/ml

Instrument :
FID_B
ClientSampleId :
20 PPB GRO STD



#10 1,2,4-Trimethylbenzene

R.T.: 16.193 min
Delta R.T.: -0.004 min
Response: 462517
Conc: 17.49 ng/ml