

Data Path : Z:\pestpcbsrv\HPCHEM1\FID_B\Data\FB063025\
 Data File : FB031982.D
 Signal(s) : FID2B.CH
 Acq On : 30 Jun 2025 18:23
 Operator : YP/AJ
 Sample : Q2458-09
 Misc : 4.30G/5.00 ML DI WATER
 ALS Vial : 13 Sample Multiplier: 1

Instrument :
 FID_B
ClientSampleId :
 TP-59

Integration File: Calibration.e
 Quant Time: Jul 01 01:08:35 2025
 Quant Method : Z:\pestpcbsrv\HPCHEM1\FID_B\Method\FB062325.M
 Quant Title :
 QLast Update : Mon Jun 23 13:56:54 2025
 Response via : Initial Calibration
 Integrator: ChemStation

Volume Inj. : 5 g/ml
 Signal Phase : RTX-502.2
 Signal Info : 60mx0.53mmx3.00um

Compound	R.T.	Response	Conc Units

System Monitoring Compounds			
5) s AAA-TFT	8.805	251449	16.298 ng/ml
Target Compounds			

(f)=RT Delta > 1/2 Window

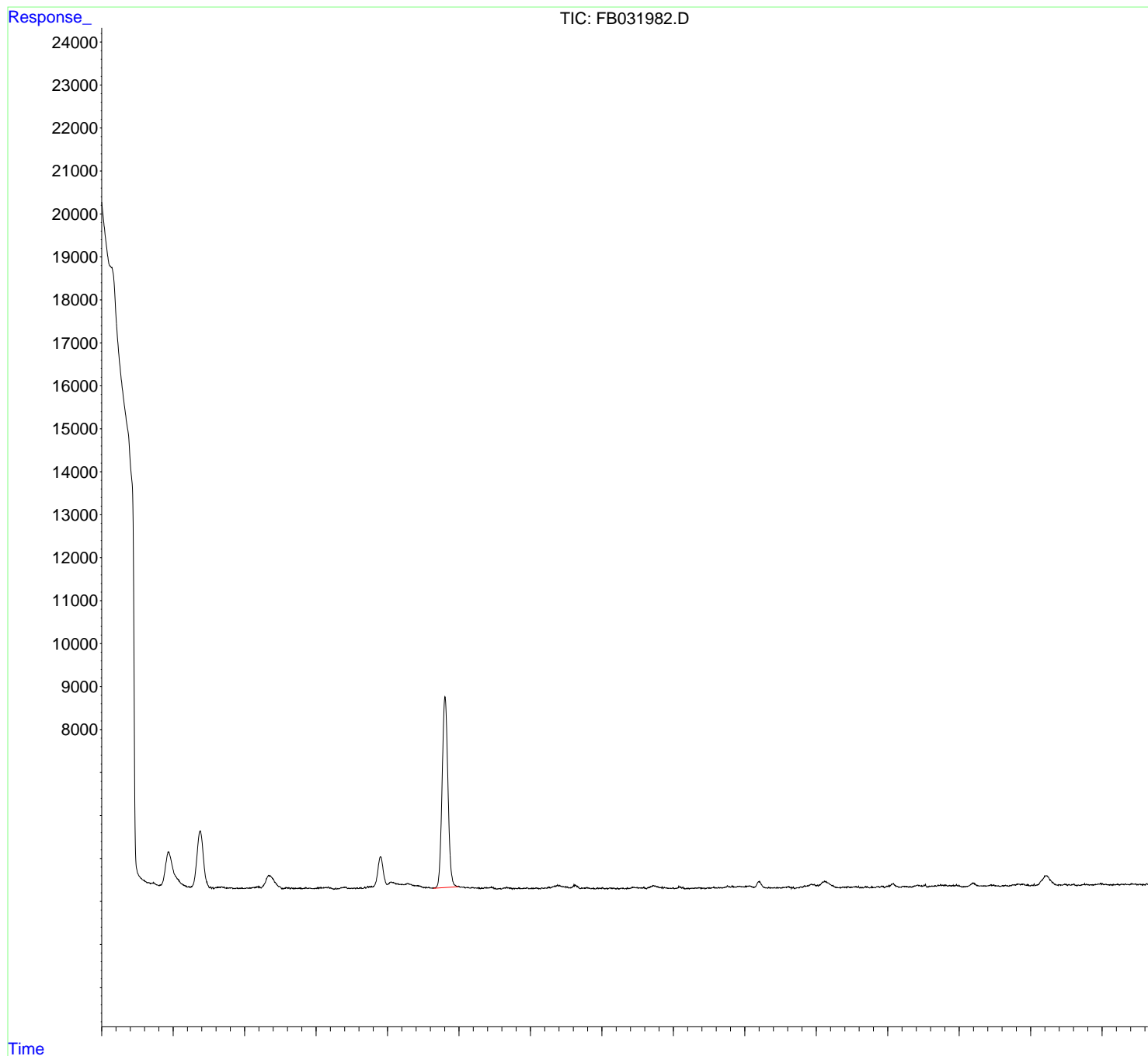
(m)=manual int.

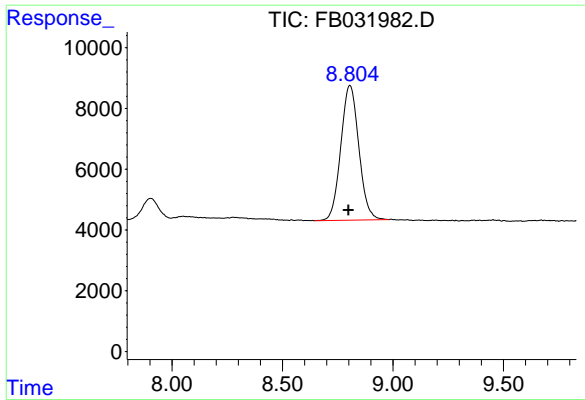
Data Path : Z:\pestpcbsrv\HPCHEM1\FID_B\Data\FB063025\
Data File : FB031982.D
Signal(s) : FID2B.CH
Acq On : 30 Jun 2025 18:23
Operator : YP/AJ
Sample : Q2458-09
Misc : 4.30G/5.00 ML DI WATER
ALS Vial : 13 Sample Multiplier: 1

Instrument :
FID_B
ClientSampleId :
TP-59

Integration File: Calibration.e
Quant Time: Jul 01 01:08:35 2025
Quant Method : Z:\pestpcbsrv\HPCHEM1\FID_B\Method\FB062325.M
Quant Title :
QLast Update : Mon Jun 23 13:56:54 2025
Response via : Initial Calibration
Integrator: ChemStation

Volume Inj. : 5 g/ml
Signal Phase : RTX-502.2
Signal Info : 60mx0.53mmx3.00um





#5 AAA-TFT

R.T.: 8.805 min
Delta R.T.: 0.007 min
Response: 251449
Conc: 16.30 ng/ml

Instrument :
FID_B
ClientSampleId :
TP-59