

Data Path : Z:\pestpcbsrv\HPCHEM1\FID_B\Data\FB070319\
Data File : FB021630.D
Signal(s) : FID2B.CH
Acq On : 3 Jul 2019 13:00
Operator : MJ/SJ
Sample : VBF0703S1
Misc : 5.01g/5.00ml DI WATER
ALS Vial : 2 Sample Multiplier: 1

Integration File: Calibration.e
Quant Time: Jul 03 22:25:46 2019
Quant Method : Z:\pestpcbsrv\HPCHEM1\FID_B\Method\FB062419.M
Quant Title :
QLast Update : Mon Jun 24 16:18:04 2019
Response via : Initial Calibration
Integrator: ChemStation

Volume Inj. : 5 g/ml
Signal Phase : RTX-502.2
Signal Info : 60mx0.53mmx3.00um

| Compound | R.T. | Response | Conc Units |
|-----------------------------|-------|----------|--------------|
| ----- | | | |
| System Monitoring Compounds | | | |
| 5) s AAA-TFT | 8.990 | 267911 | 19.377 ng/ml |
| Target Compounds | | | |
| ----- | | | |

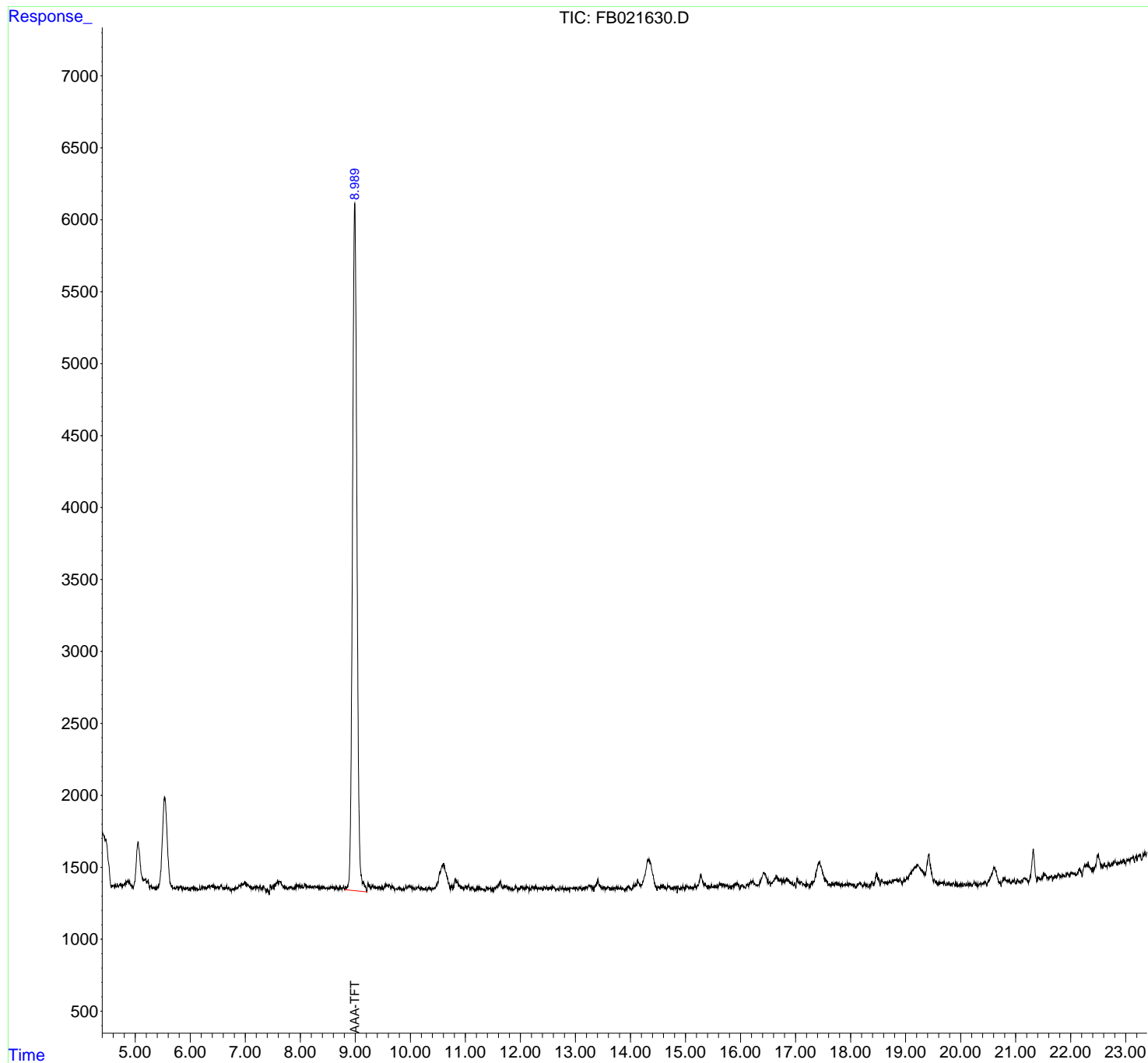
(f)=RT Delta > 1/2 Window

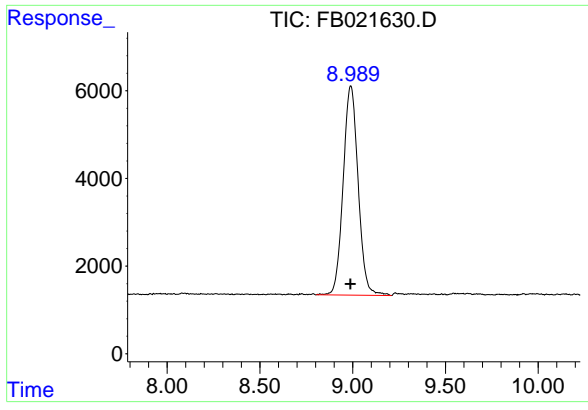
(m)=manual int.

Data Path : Z:\pestpcbsrv\HPCHEM1\FID_B\Data\FB070319\
 Data File : FB021630.D
 Signal(s) : FID2B.CH
 Acq On : 3 Jul 2019 13:00
 Operator : MJ/SJ
 Sample : VBF0703S1
 Misc : 5.01g/5.00ml DI WATER
 ALS Vial : 2 Sample Multiplier: 1

Integration File: Calibration.e
 Quant Time: Jul 03 22:25:46 2019
 Quant Method : Z:\pestpcbsrv\HPCHEM1\FID_B\Method\FB062419.M
 Quant Title :
 QLast Update : Mon Jun 24 16:18:04 2019
 Response via : Initial Calibration
 Integrator: ChemStation

Volume Inj. : 5 g/ml
 Signal Phase : RTX-502.2
 Signal Info : 60mx0.53mmx3.00um





#5 AAA-TFT

R.T.: 8.990 min
Delta R.T.: 0.002 min
Response: 267911
Conc: 19.38 ng/ml