

Data Path : Z:\pestpcbsrv\HPCHEM1\FID_B\Data\FB070319\
 Data File : FB021637.D
 Signal(s) : FID2B.CH
 Acq On : 3 Jul 2019 18:18
 Operator : MJ/SJ
 Sample : K3668-02
 Misc : 5.02g/5.00ml DI WATER
 ALS Vial : 9 Sample Multiplier: 1

Integration File: Calibration.e
 Quant Time: Jul 03 22:26:49 2019
 Quant Method : Z:\pestpcbsrv\HPCHEM1\FID_B\Method\FB062419.M
 Quant Title :
 QLast Update : Mon Jun 24 16:18:04 2019
 Response via : Initial Calibration
 Integrator: ChemStation

Volume Inj. : 5 g/ml
 Signal Phase : RTX-502.2
 Signal Info : 60mx0.53mmx3.00um

Compound	R.T.	Response	Conc Units

System Monitoring Compounds			
5) s AAA-TFT	8.992	295850	21.397 ng/ml
Target Compounds			

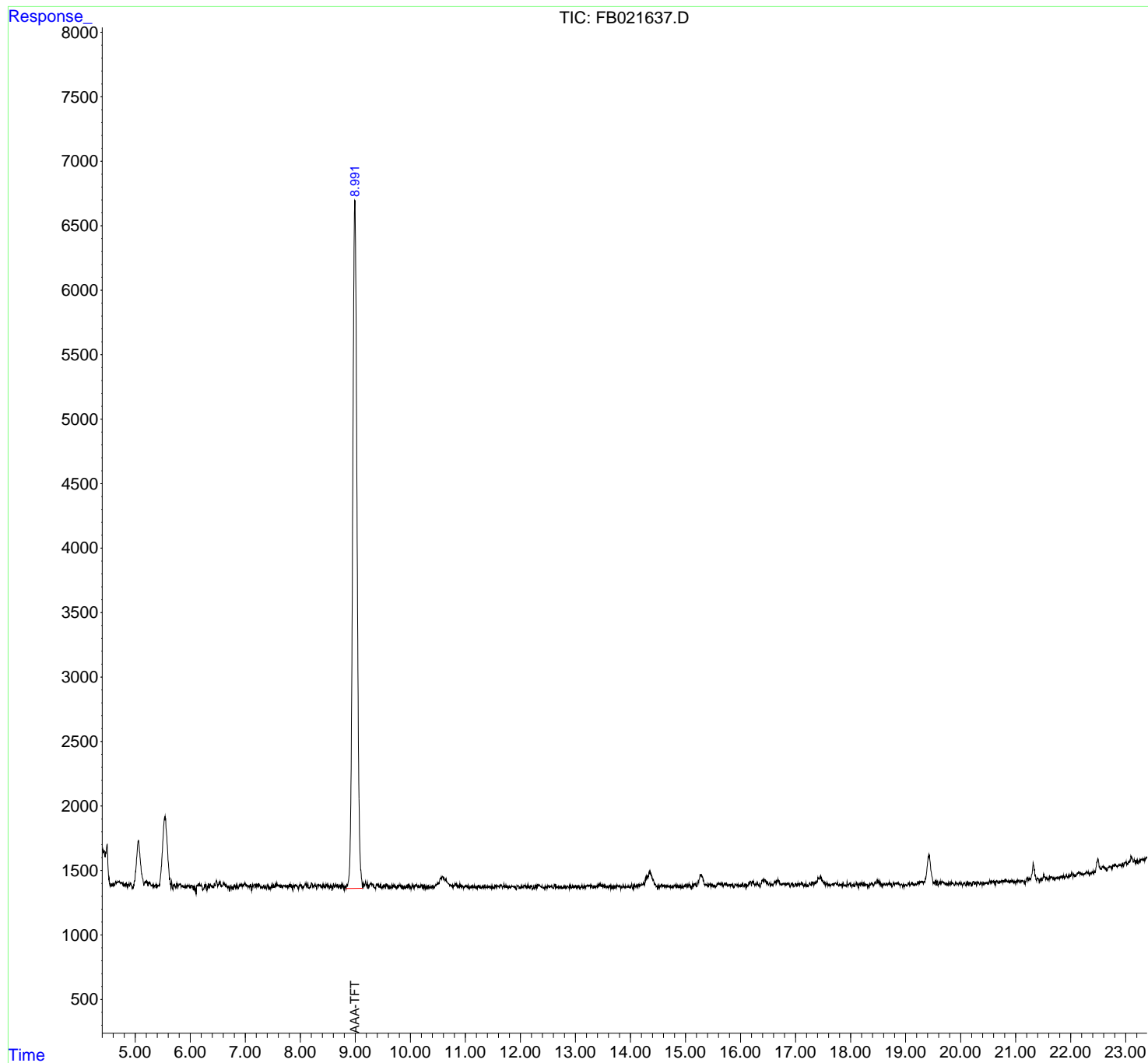
(f)=RT Delta > 1/2 Window

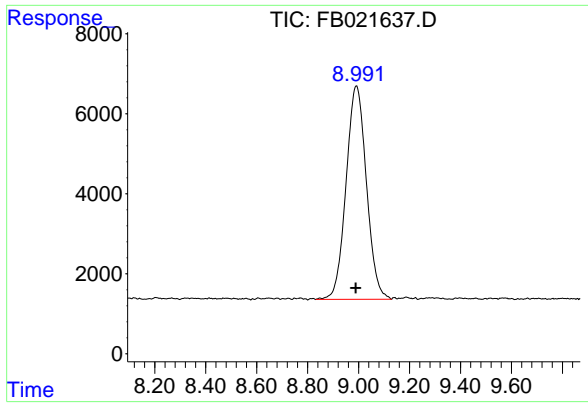
(m)=manual int.

Data Path : Z:\pestpcbsrv\HPCHEM1\FID_B\Data\FB070319\
 Data File : FB021637.D
 Signal(s) : FID2B.CH
 Acq On : 3 Jul 2019 18:18
 Operator : MJ/SJ
 Sample : K3668-02
 Misc : 5.02g/5.00ml DI WATER
 ALS Vial : 9 Sample Multiplier: 1

Integration File: Calibration.e
 Quant Time: Jul 03 22:26:49 2019
 Quant Method : Z:\pestpcbsrv\HPCHEM1\FID_B\Method\FB062419.M
 Quant Title :
 QLast Update : Mon Jun 24 16:18:04 2019
 Response via : Initial Calibration
 Integrator: ChemStation

Volume Inj. : 5 g/ml
 Signal Phase : RTX-502.2
 Signal Info : 60mx0.53mmx3.00um





#5 AAA-TFT

R.T.: 8.992 min

Delta R.T.: 0.004 min

Response: 295850

Conc: 21.40 ng/ml