

Data Path : Z:\pestpcbsrv\HPCHEM1\FID_B\Data\FB070920\
 Data File : FB024557.D
 Signal(s) : FID2B.CH
 Acq On : 9 Jul 2020 10:28
 Operator : DD/AJ
 Sample : 100 GRO STD
 Misc :
 ALS Vial : 5 Sample Multiplier: 1

Instrument :
 FID_B
 ClientSampleId :

Integration File: Calibration.e
 Quant Time: Jul 09 10:48:28 2020
 Quant Method : Z:\pestpcbsrv\HPCHEM1\FID_B\Method\FB070920.M
 Quant Title :
 QLast Update : Thu Jul 09 10:12:44 2020
 Response via : Initial Calibration
 Integrator: ChemStation

Volume Inj. : 5 g/ml
 Signal Phase : RTX-502.2
 Signal Info : 60mx0.53mmx3.00um

Compound	R.T.	Response	Conc Units

System Monitoring Compounds			
5) s AAA-TFT	8.798	2026788	85.420 ng/ml
Target Compounds			
1) t 2-Methylpentane	4.685	4076365	134.991 ng/ml
2) t 2,2,4-Trimethylpentane	7.415	4432134	139.610 ng/ml
3) t n-Heptane	7.756	1466911	46.523 ng/ml
4) t Benzene	7.891	1807216	46.806 ng/ml
6) t Toluene	10.630	5161980	139.129 ng/ml
7) t Ethylbenzene	13.069	1648125	47.834 ng/ml
8) t m-Xylene	13.202	3229356	94.675 ng/ml
9) t O-Xylene	13.930	3132247	94.194 ng/ml
10) t 1,2,4-Trimethylbenzene	16.207	2632134	96.991 ng/ml

(f)=RT Delta > 1/2 Window

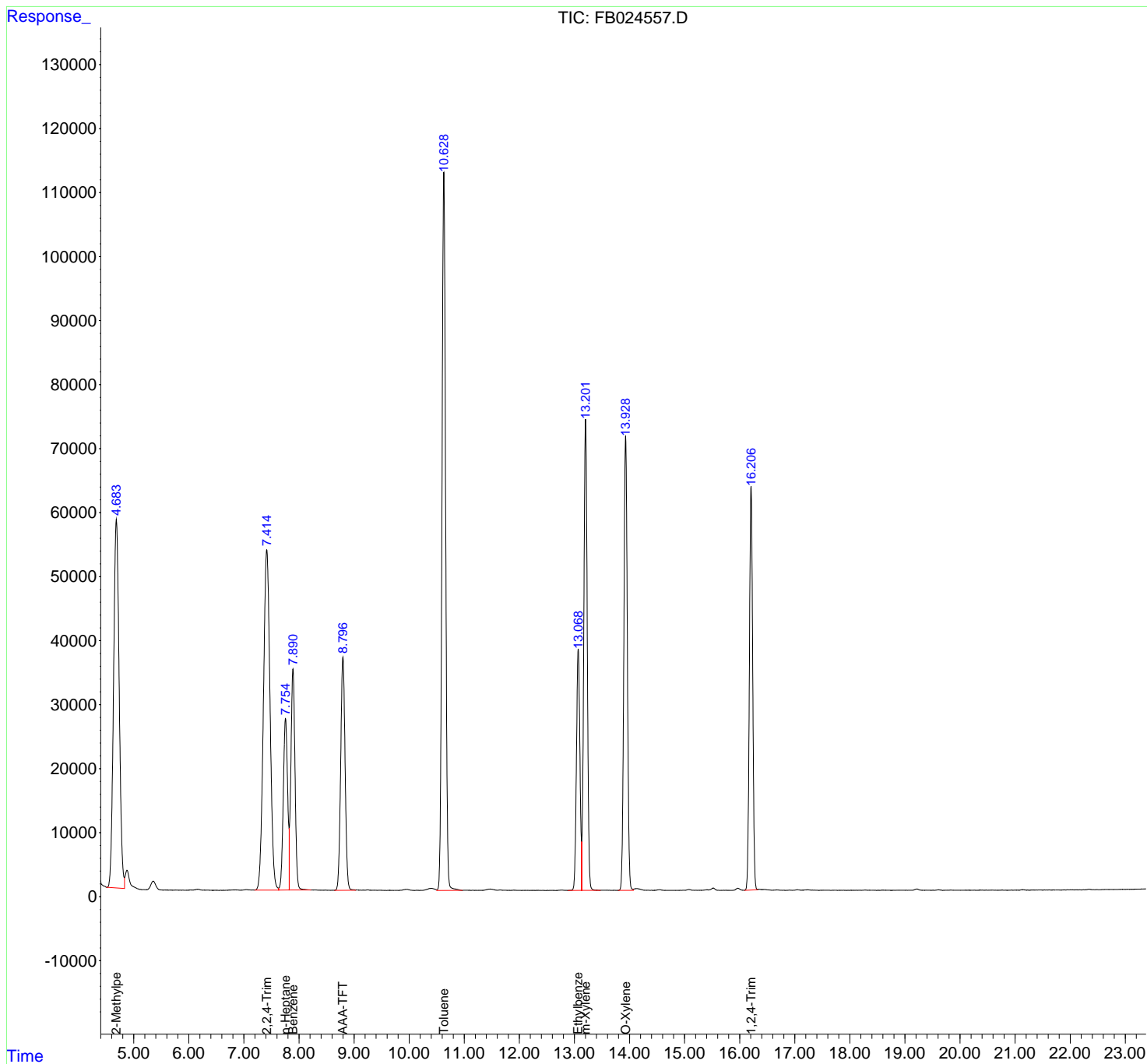
(m)=manual int.

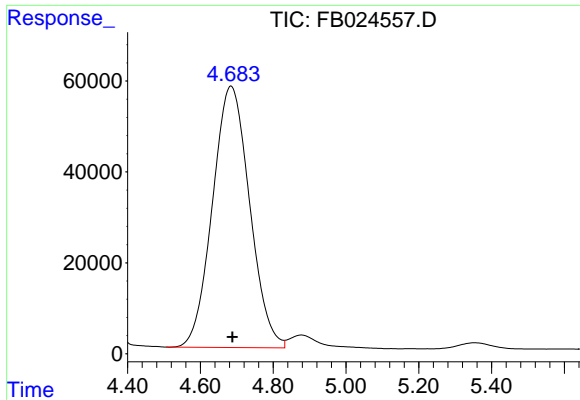
Data Path : Z:\pestpcbsrv\HPCHEM1\FID_B\Data\FB070920\
 Data File : FB024557.D
 Signal(s) : FID2B.CH
 Acq On : 9 Jul 2020 10:28
 Operator : DD/AJ
 Sample : 100 GRO STD
 Misc :
 ALS Vial : 5 Sample Multiplier: 1

Instrument :
 FID_B
 ClientSampled :

Integration File: Calibration.e
 Quant Time: Jul 09 10:48:28 2020
 Quant Method : Z:\pestpcbsrv\HPCHEM1\FID_B\Method\FB070920.M
 Quant Title :
 QLast Update : Thu Jul 09 10:12:44 2020
 Response via : Initial Calibration
 Integrator: ChemStation

Volume Inj. : 5 g/ml
 Signal Phase : RTX-502.2
 Signal Info : 60mx0.53mmx3.00um

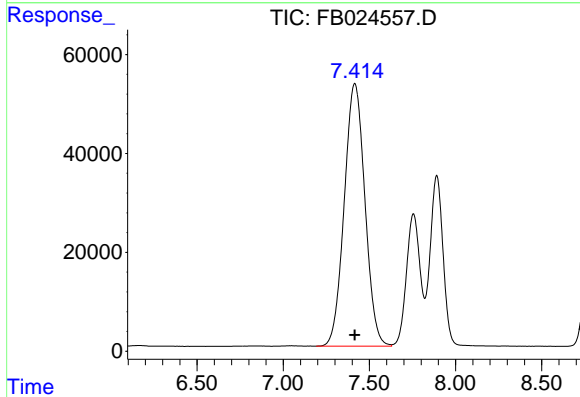




#1 2-Methylpentane

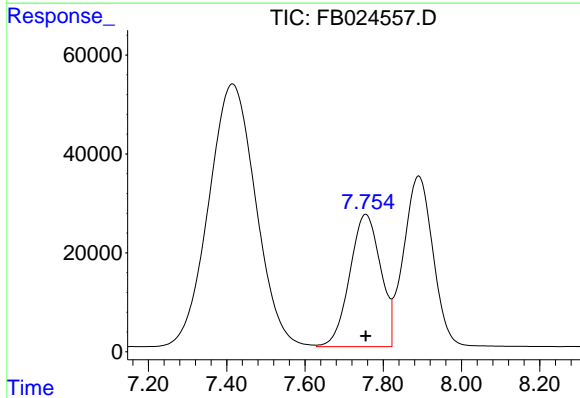
R.T.: 4.685 min
Delta R.T.: -0.003 min
Response: 4076365
Conc: 134.99 ng/ml

Instrument :
FID_B
ClientSampled :



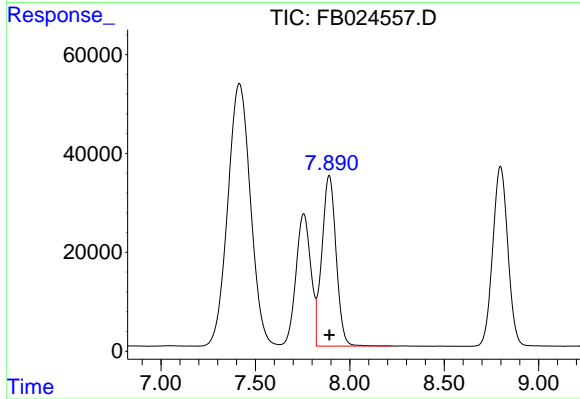
#2 2,2,4-Trimethylpentane

R.T.: 7.415 min
Delta R.T.: 0.000 min
Response: 4432134
Conc: 139.61 ng/ml



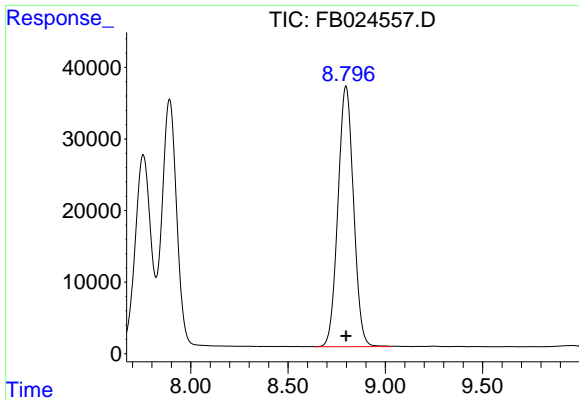
#3 n-Heptane

R.T.: 7.756 min
Delta R.T.: 0.000 min
Response: 1466911
Conc: 46.52 ng/ml



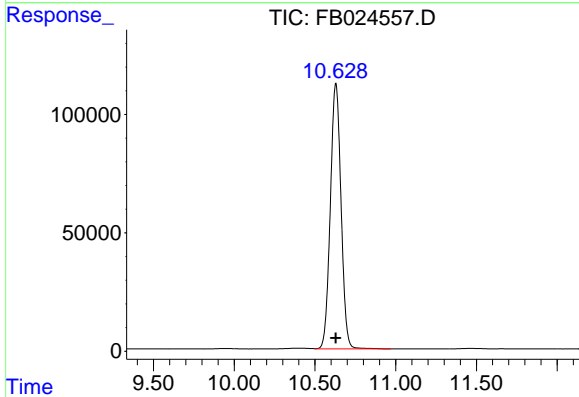
#4 Benzene

R.T.: 7.891 min
Delta R.T.: 0.000 min
Response: 1807216
Conc: 46.81 ng/ml

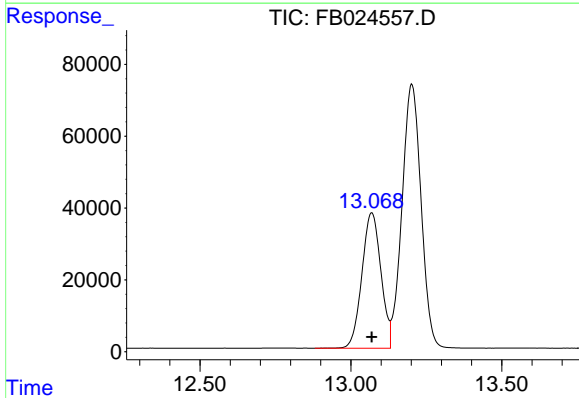


#5 AAA-TFT
 R.T.: 8.798 min
 Delta R.T.: 0.000 min
 Response: 2026788
 Conc: 85.42 ng/ml

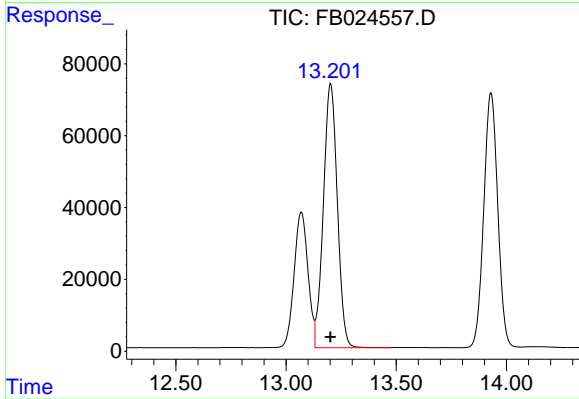
Instrument :
 FID_B
 ClientSampled :



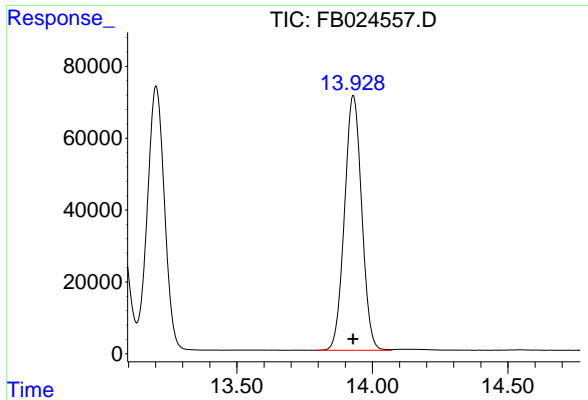
#6 Toluene
 R.T.: 10.630 min
 Delta R.T.: 0.000 min
 Response: 5161980
 Conc: 139.13 ng/ml



#7 Ethylbenzene
 R.T.: 13.069 min
 Delta R.T.: 0.000 min
 Response: 1648125
 Conc: 47.83 ng/ml

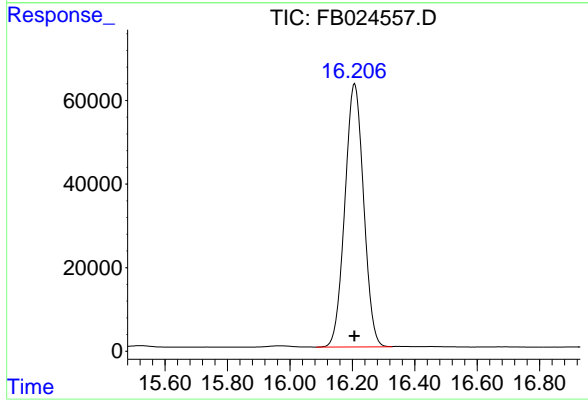


#8 m-Xylene
 R.T.: 13.202 min
 Delta R.T.: 0.000 min
 Response: 3229356
 Conc: 94.67 ng/ml



#9 O-Xylene
R.T.: 13.930 min
Delta R.T.: 0.000 min
Response: 3132247
Conc: 94.19 ng/ml

Instrument :
FID_B
ClientSampled :



#10 1,2,4-Trimethylbenzene
R.T.: 16.207 min
Delta R.T.: 0.000 min
Response: 2632134
Conc: 96.99 ng/ml