

Data Path : Z:\pestpcbsrv\HPCHEM1\FID_B\Data\FB071219\
 Data File : FB021685.D
 Signal(s) : FID2B.CH
 Acq On : 12 Jul 2019 12:44
 Operator : MJ/SJ
 Sample : 20 PPB GRO STD
 Misc :
 ALS Vial : 9 Sample Multiplier: 1

Integration File: Calibration.e
 Quant Time: Jul 12 23:39:07 2019
 Quant Method : Z:\pestpcbsrv\HPCHEM1\FID_B\Method\FB062419.M
 Quant Title :
 QLast Update : Mon Jun 24 16:18:04 2019
 Response via : Initial Calibration
 Integrator: ChemStation

Volume Inj. : 5 g/ml
 Signal Phase : RTX-502.2
 Signal Info : 60mx0.53mmx3.00um

Compound	R.T.	Response	Conc Units

System Monitoring Compounds			
5) s AAA-TFT	8.995	292701	21.170 ng/ml
Target Compounds			
1) t 2-Methylpentane	4.866	907088	26.572 ng/ml
2) t 2,2,4-Trimethylpentane	7.615	897936	29.057 ng/ml
3) t n-Heptane	7.954	279690	9.556 ng/ml
4) t Benzene	8.089	335455	9.994 ng/ml
6) t Toluene	10.836	701698	30.719 ng/ml
7) t Ethylbenzene	13.282	221409	9.353 ng/ml
8) t m-Xylene	13.415	476808	18.812 ng/ml
9) t O-Xylene	14.144	501182	19.109 ng/ml
10) t 1,2,4-Trimethylbenzene	16.423	517608	19.700 ng/ml

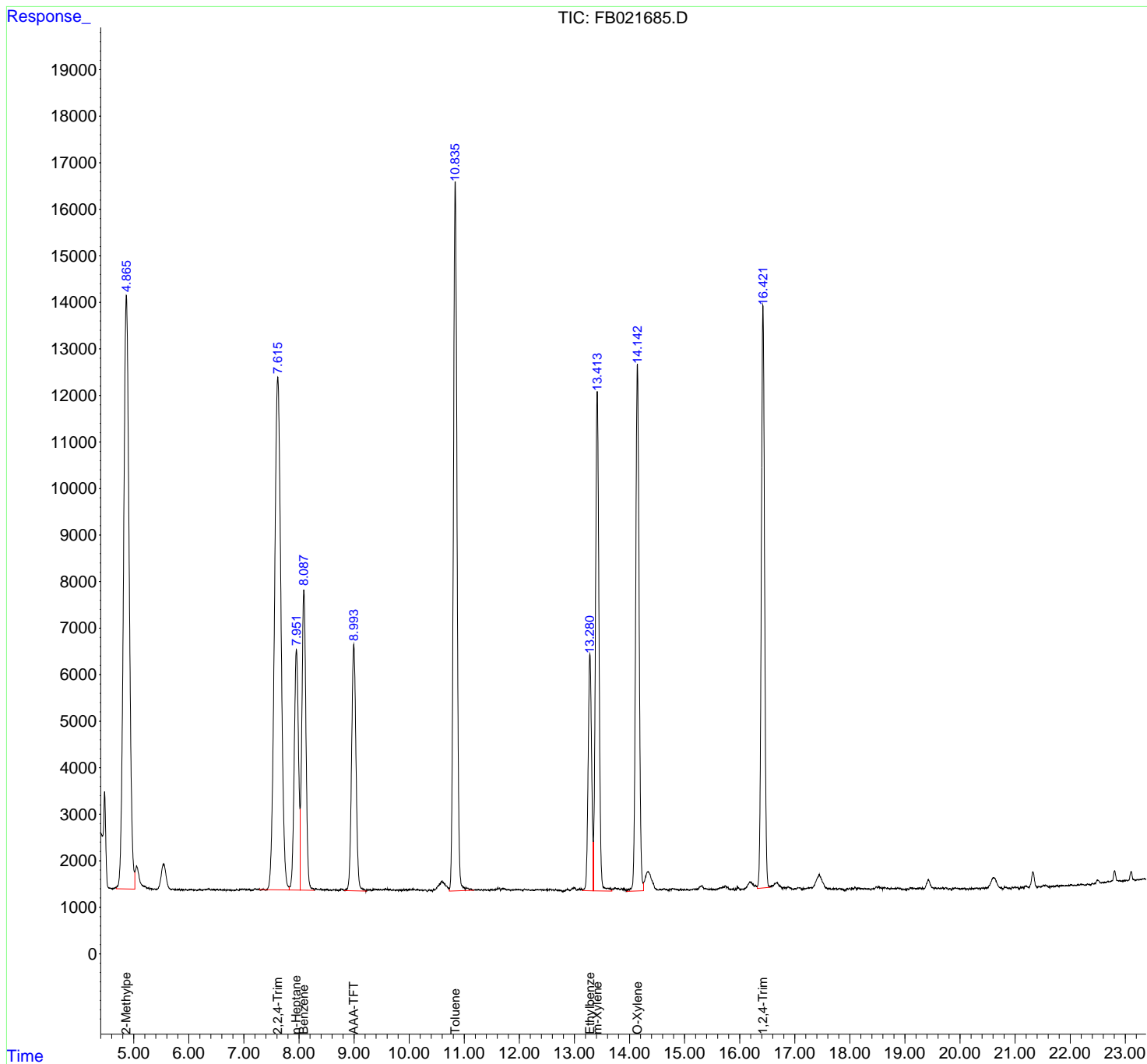
(f)=RT Delta > 1/2 Window

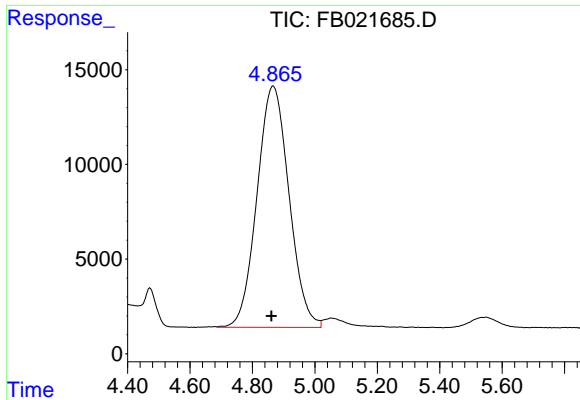
(m)=manual int.

Data Path : Z:\pestpcbsrv\HPCHEM1\FID_B\Data\FB071219\
 Data File : FB021685.D
 Signal(s) : FID2B.CH
 Acq On : 12 Jul 2019 12:44
 Operator : MJ/SJ
 Sample : 20 PPB GRO STD
 Misc :
 ALS Vial : 9 Sample Multiplier: 1

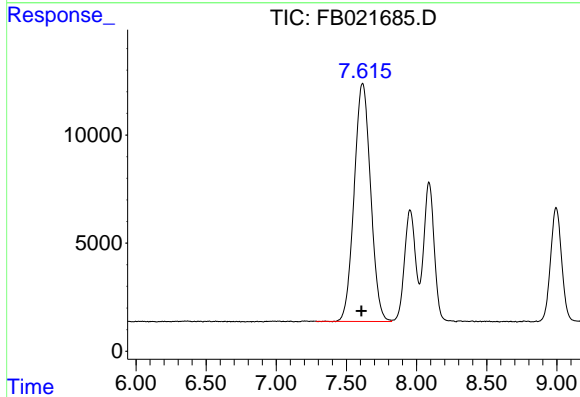
Integration File: Calibration.e
 Quant Time: Jul 12 23:39:07 2019
 Quant Method : Z:\pestpcbsrv\HPCHEM1\FID_B\Method\FB062419.M
 Quant Title :
 QLast Update : Mon Jun 24 16:18:04 2019
 Response via : Initial Calibration
 Integrator: ChemStation

Volume Inj. : 5 g/ml
 Signal Phase : RTX-502.2
 Signal Info : 60mx0.53mmx3.00um

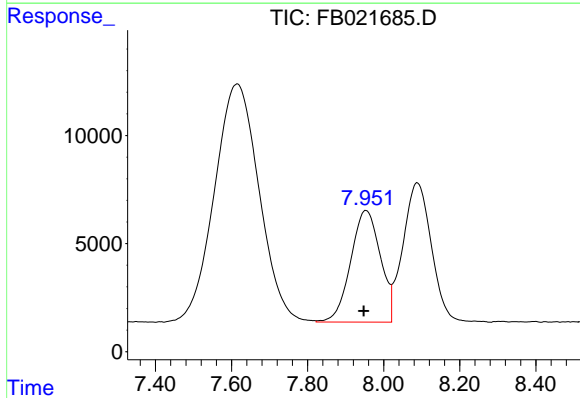




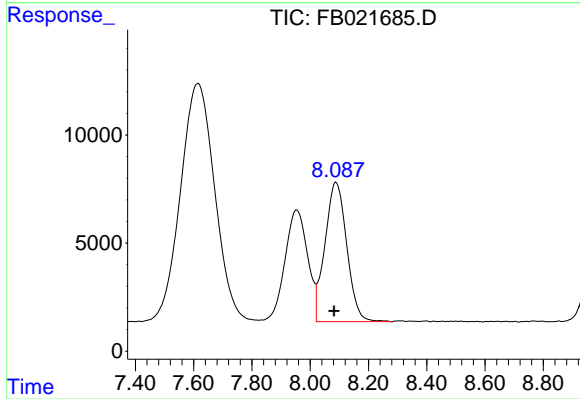
#1 2-Methylpentane
R.T.: 4.866 min
Delta R.T.: 0.005 min
Response: 907088
Conc: 26.57 ng/ml



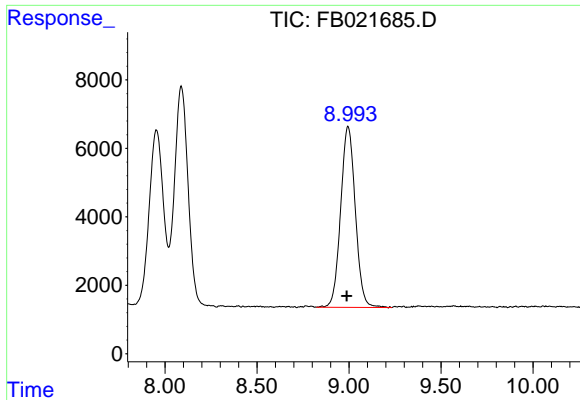
#2 2,2,4-Trimethylpentane
R.T.: 7.615 min
Delta R.T.: 0.007 min
Response: 897936
Conc: 29.06 ng/ml



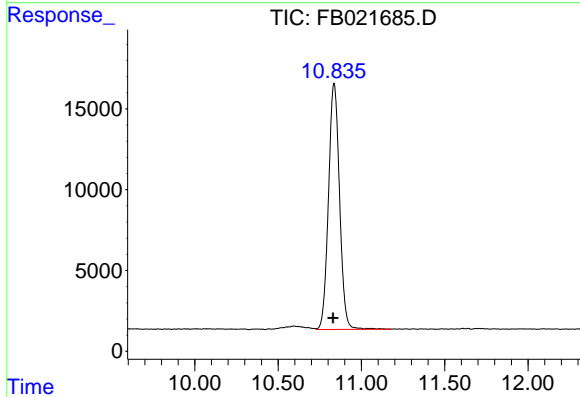
#3 n-Heptane
R.T.: 7.954 min
Delta R.T.: 0.006 min
Response: 279690
Conc: 9.56 ng/ml



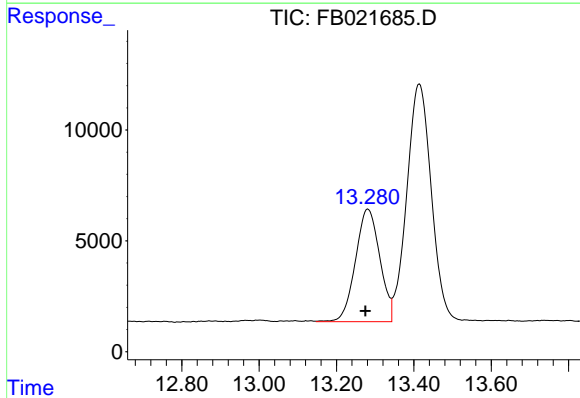
#4 Benzene
R.T.: 8.089 min
Delta R.T.: 0.007 min
Response: 335455
Conc: 9.99 ng/ml



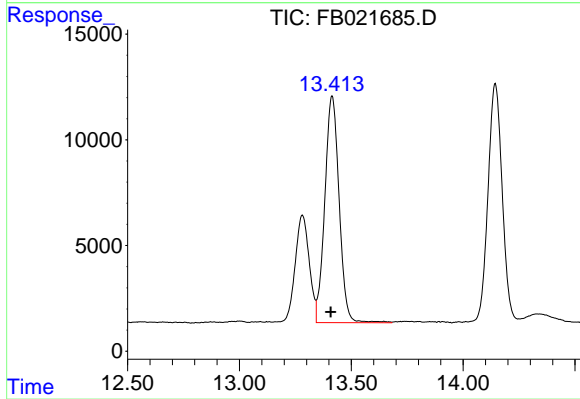
#5 AAA-TFT
 R.T.: 8.995 min
 Delta R.T.: 0.006 min
 Response: 292701
 Conc: 21.17 ng/ml



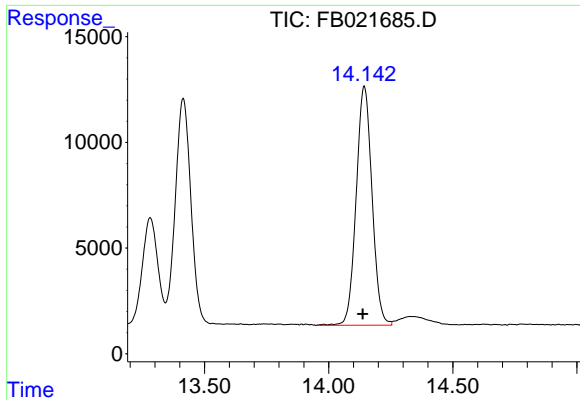
#6 Toluene
 R.T.: 10.836 min
 Delta R.T.: 0.007 min
 Response: 701698
 Conc: 30.72 ng/ml



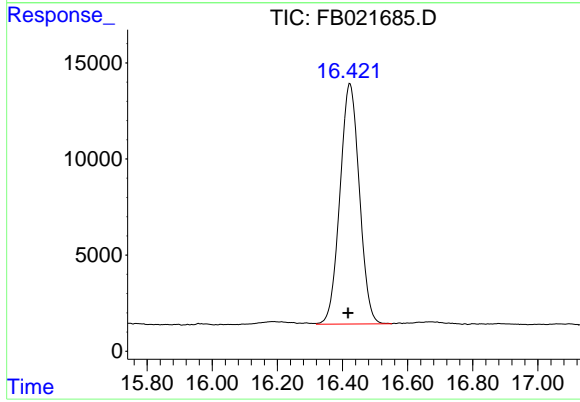
#7 Ethylbenzene
 R.T.: 13.282 min
 Delta R.T.: 0.006 min
 Response: 221409
 Conc: 9.35 ng/ml



#8 m-Xylene
 R.T.: 13.415 min
 Delta R.T.: 0.007 min
 Response: 476808
 Conc: 18.81 ng/ml



#9 O-Xylene
R.T.: 14.144 min
Delta R.T.: 0.006 min
Response: 501182
Conc: 19.11 ng/ml



#10 1,2,4-Trimethylbenzene
R.T.: 16.423 min
Delta R.T.: 0.006 min
Response: 517608
Conc: 19.70 ng/ml