

Data Path : Z:\pestpcbsrv\HPCHEM1\FID_B\Data\FB071520\
 Data File : FB024608.D
 Signal(s) : FID2B.CH
 Acq On : 15 Jul 2020 12:30
 Operator : DD/AJ
 Sample : L3188-08MSD
 Misc : 5.04g/5.00ml DI WATER
 ALS Vial : 8 Sample Multiplier: 1

Integration File: Calibration.e
 Quant Time: Jul 16 00:59:59 2020
 Quant Method : Z:\pestpcbsrv\HPCHEM1\FID_B\Method\FB070920.M
 Quant Title :
 QLast Update : Thu Jul 09 10:49:06 2020
 Response via : Initial Calibration
 Integrator: ChemStation

Volume Inj. : 5 g/ml
 Signal Phase : RTX-502.2
 Signal Info : 60mx0.53mmx3.00um

Compound	R.T.	Response	Conc Units

System Monitoring Compounds			
5) s AAA-TFT	8.798	396733	17.223 ng/ml
Target Compounds			
1) t 2-Methylpentane	4.689	604696	20.434 ng/ml
2) t 2,2,4-Trimethylpentane	7.417	574067	18.337 ng/ml
3) t n-Heptane	7.757	189601	6.098 ng/ml
4) t Benzene	7.891	299749	7.864 ng/ml
6) t Toluene	10.629	823515	22.522 ng/ml
7) t Ethylbenzene	13.068	243303	7.123 ng/ml
8) t m-Xylene	13.201	469614	13.916 ng/ml
9) t O-Xylene	13.929	464418	14.130 ng/ml
10) t 1,2,4-Trimethylbenzene	16.206	356373	13.211 ng/ml

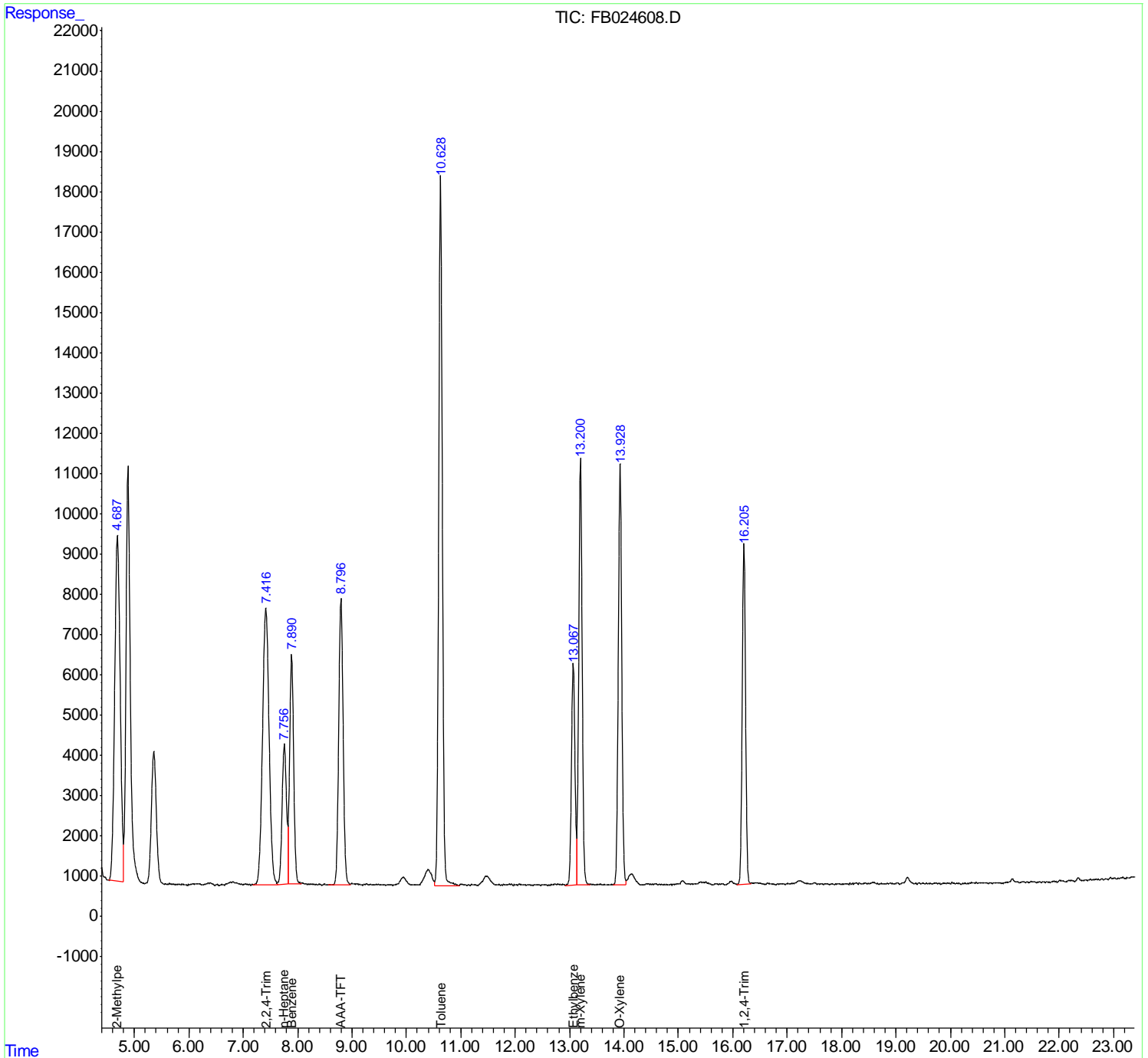
(f)=RT Delta > 1/2 Window

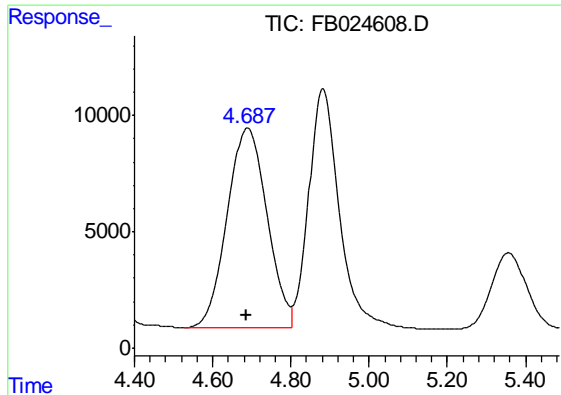
(m)=manual int.

Data Path : Z:\pestpcbsrv\HPCHEM1\FID_B\Data\FB071520\
 Data File : FB024608.D
 Signal(s) : FID2B.CH
 Acq On : 15 Jul 2020 12:30
 Operator : DD/AJ
 Sample : L3188-08MSD
 Misc : 5.04g/5.00ml DI WATER
 ALS Vial : 8 Sample Multiplier: 1

Integration File: Calibration.e
 Quant Time: Jul 16 00:59:59 2020
 Quant Method : Z:\pestpcbsrv\HPCHEM1\FID_B\Method\FB070920.M
 Quant Title :
 QLast Update : Thu Jul 09 10:49:06 2020
 Response via : Initial Calibration
 Integrator: ChemStation

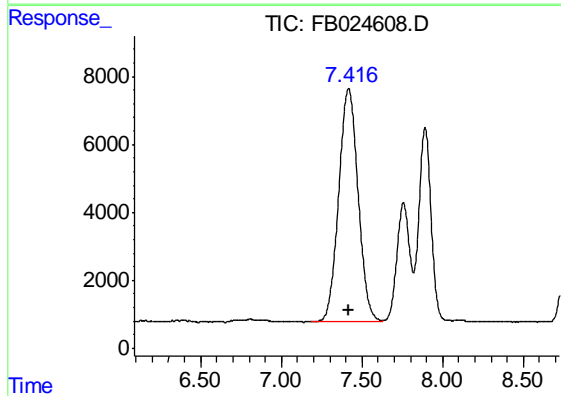
Volume Inj. : 5 g/ml
 Signal Phase : RTX-502.2
 Signal Info : 60mx0.53mmx3.00um





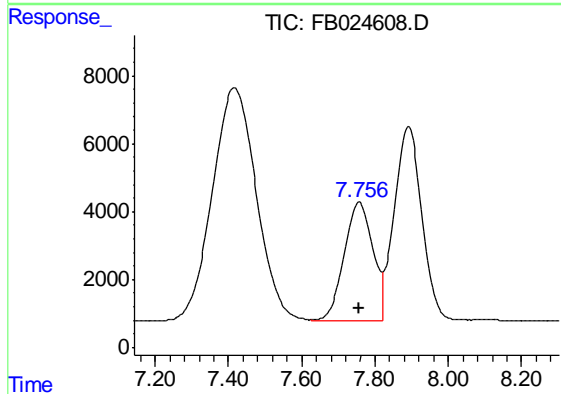
#1 2-Methylpentane

R.T.: 4.689 min
Delta R.T.: 0.000 min
Response: 604696
Conc: 20.43 ng/ml



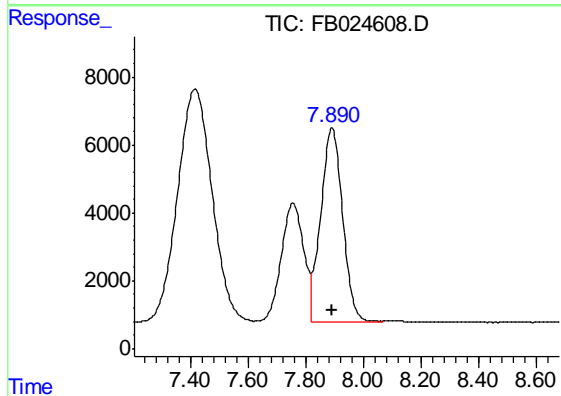
#2 2,2,4-Trimethylpentane

R.T.: 7.417 min
Delta R.T.: 0.001 min
Response: 574067
Conc: 18.34 ng/ml



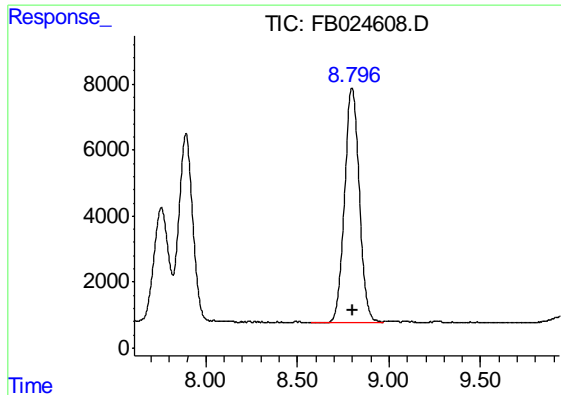
#3 n-Heptane

R.T.: 7.757 min
Delta R.T.: 0.001 min
Response: 189601
Conc: 6.10 ng/ml



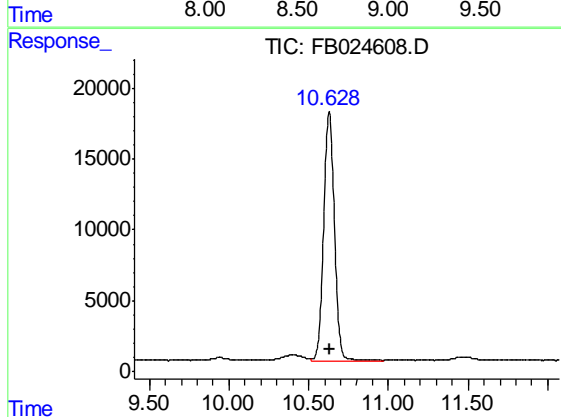
#4 Benzene

R.T.: 7.891 min
Delta R.T.: 0.000 min
Response: 299749
Conc: 7.86 ng/ml



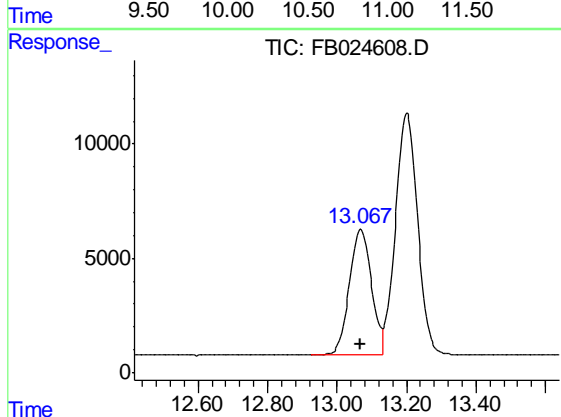
#5 AAA-TFT

R.T.: 8.798 min
 Delta R.T.: 0.000 min
 Response: 396733
 Conc: 17.22 ng/ml



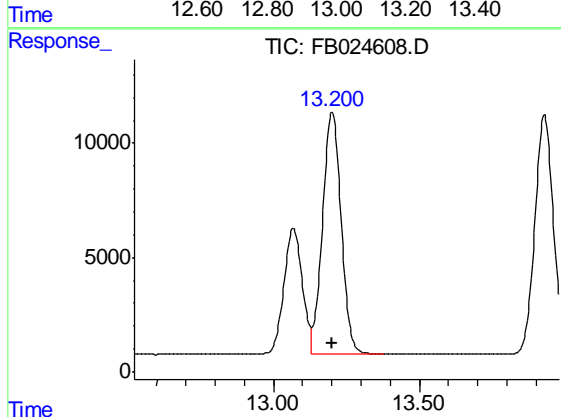
#6 Toluene

R.T.: 10.629 min
 Delta R.T.: 0.000 min
 Response: 823515
 Conc: 22.52 ng/ml



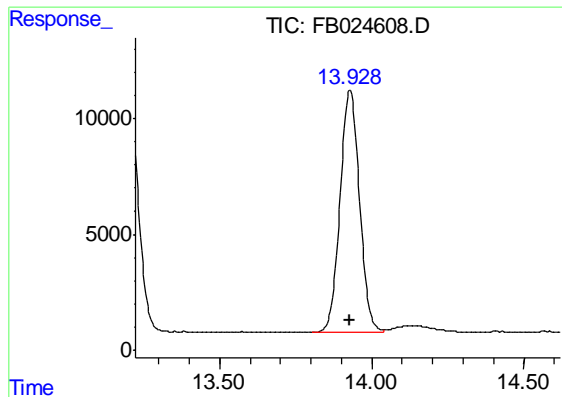
#7 Ethylbenzene

R.T.: 13.068 min
 Delta R.T.: 0.000 min
 Response: 243303
 Conc: 7.12 ng/ml



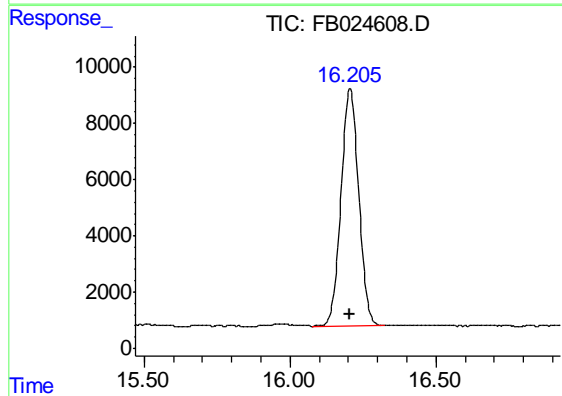
#8 m-Xylene

R.T.: 13.201 min
 Delta R.T.: 0.000 min
 Response: 469614
 Conc: 13.92 ng/ml



#9 O-Xylene

R.T.: 13.929 min
Delta R.T.: 0.000 min
Response: 464418
Conc: 14.13 ng/ml



#10 1,2,4-Trimethylbenzene

R.T.: 16.206 min
Delta R.T.: 0.000 min
Response: 356373
Conc: 13.21 ng/ml