

Data Path : Z:\pestpcbsrv\HPCHEM1\FID_B\Data\FB071522\
 Data File : FB027653.D
 Signal(s) : FID2B.CH
 Acq On : 15 Jul 2022 9:05
 Operator : AJ/MA
 Sample : 20 PPB GRO STD
 Misc :
 ALS Vial : 1 Sample Multiplier: 1

Integration File: SAMPLE.e
 Quant Time: Jul 16 00:53:34 2022
 Quant Method : Z:\pestpcbsrv\HPCHEM1\FID_B\Method\FB071122.M
 Quant Title :
 QLast Update : Mon Jul 11 14:59:12 2022
 Response via : Initial Calibration
 Integrator: ChemStation

Volume Inj. : 5 g/ml
 Signal Phase : RTX-502.2
 Signal Info : 60mx0.53mmx3.00um

Compound	R.T.	Response	Conc Units

System Monitoring Compounds			
5) s AAA-TFT	8.788	252969	21.736 ng/ml
Target Compounds			
1) t 2-Methylpentane	4.708	580129	27.547 ng/ml
2) t 2,2,4-Trimethylpentane	7.421	585351	28.207 ng/ml
3) t n-Heptane	7.747	188912	9.189 ng/ml
4) t Benzene	7.883	215752	9.194 ng/ml
6) t Toluene	10.616	605931	27.135 ng/ml
7) t Ethylbenzene	13.053	197504	9.426 ng/ml
8) t m-Xylene	13.185	385351	18.404 ng/ml
9) t O-Xylene	13.912	378860	18.515 ng/ml
10) t 1,2,4-Trimethylbenzene	16.188	397115	19.109 ng/ml

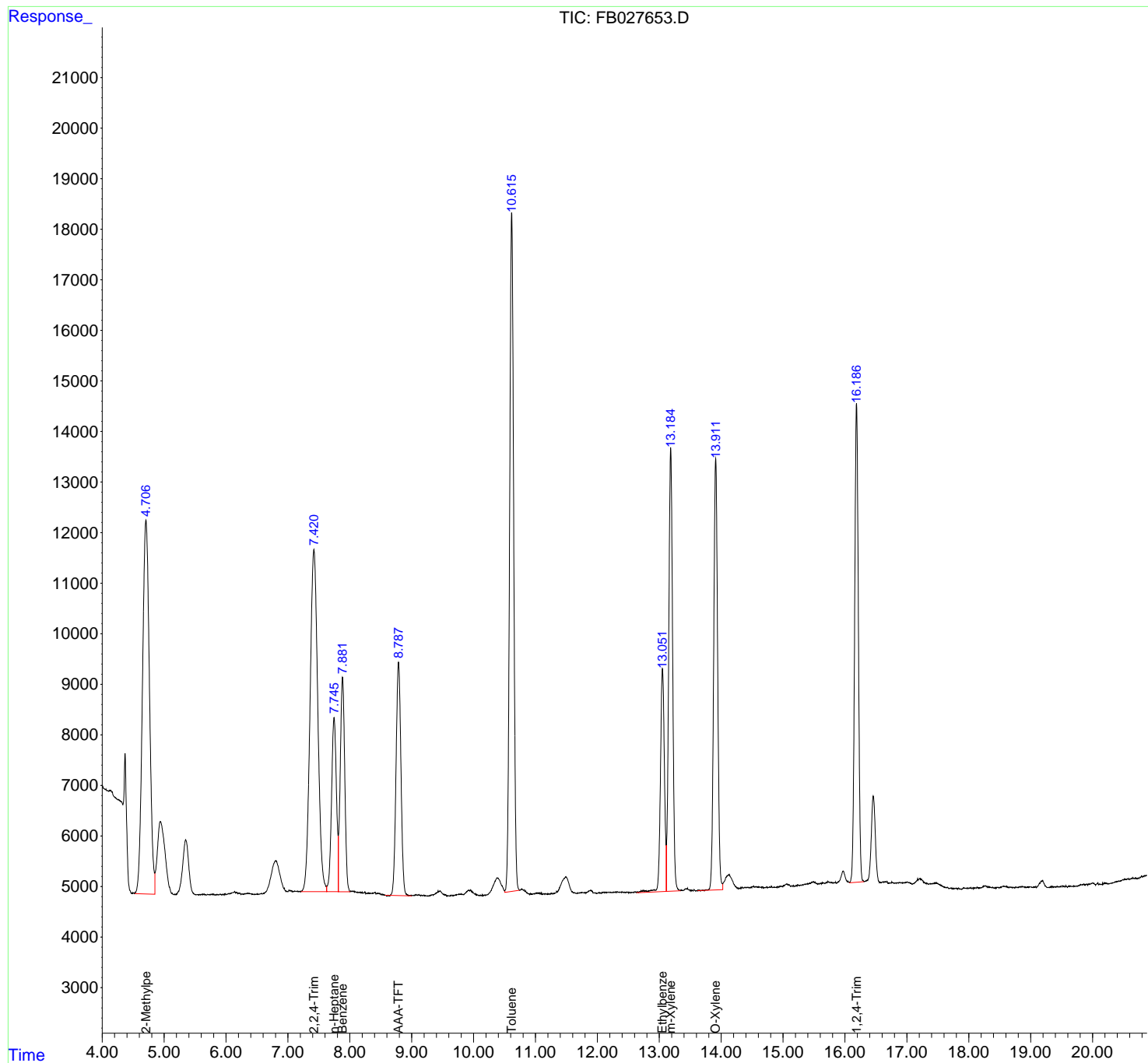
(f)=RT Delta > 1/2 Window

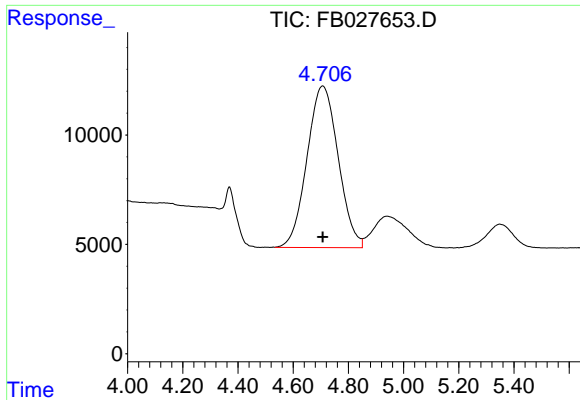
(m)=manual int.

Data Path : Z:\pestpcbsrv\HPCHEM1\FID_B\Data\FB071522\
 Data File : FB027653.D
 Signal(s) : FID2B.CH
 Acq On : 15 Jul 2022 9:05
 Operator : AJ/MA
 Sample : 20 PPB GRO STD
 Misc :
 ALS Vial : 1 Sample Multiplier: 1

Integration File: SAMPLE.e
 Quant Time: Jul 16 00:53:34 2022
 Quant Method : Z:\pestpcbsrv\HPCHEM1\FID_B\Method\FB071122.M
 Quant Title :
 QLast Update : Mon Jul 11 14:59:12 2022
 Response via : Initial Calibration
 Integrator: ChemStation

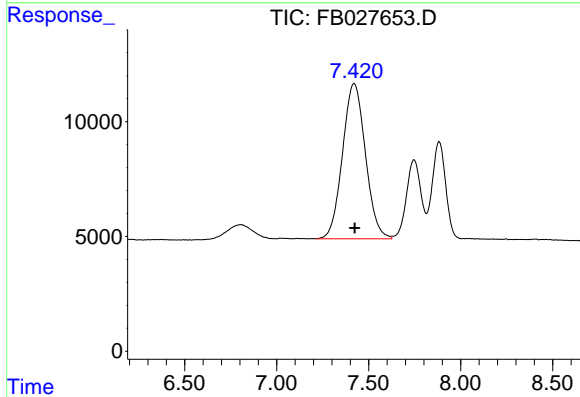
Volume Inj. : 5 g/ml
 Signal Phase : RTX-502.2
 Signal Info : 60mx0.53mmx3.00um





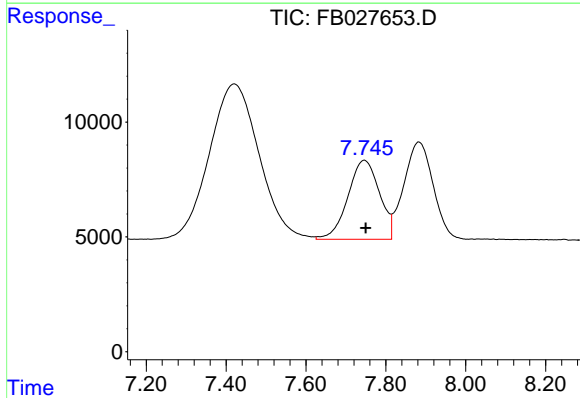
#1 2-Methylpentane

R.T.: 4.708 min
 Delta R.T.: 0.000 min
 Response: 580129
 Conc: 27.55 ng/ml



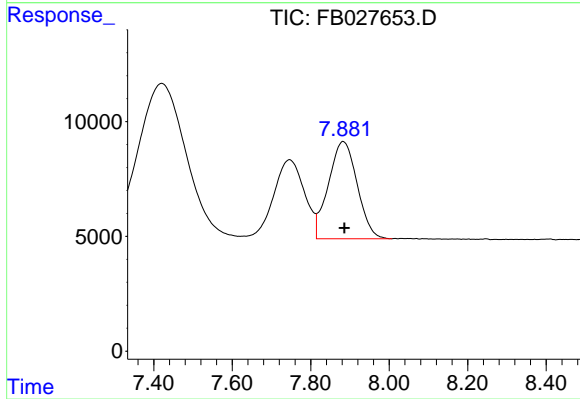
#2 2,2,4-Trimethylpentane

R.T.: 7.421 min
 Delta R.T.: -0.003 min
 Response: 585351
 Conc: 28.21 ng/ml



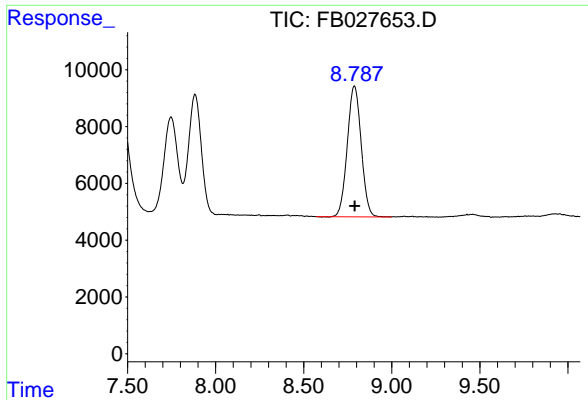
#3 n-Heptane

R.T.: 7.747 min
 Delta R.T.: -0.003 min
 Response: 188912
 Conc: 9.19 ng/ml

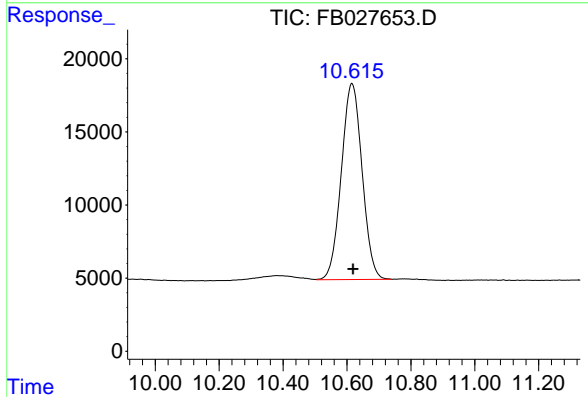


#4 Benzene

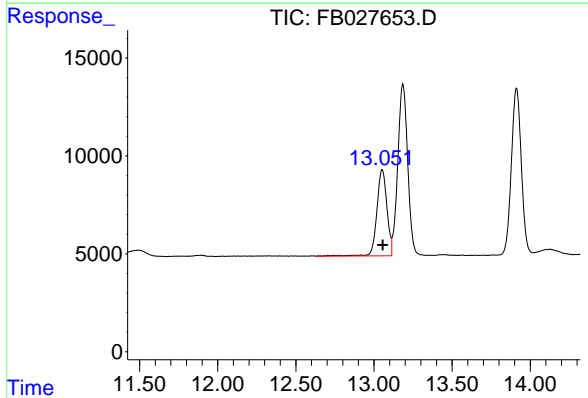
R.T.: 7.883 min
 Delta R.T.: -0.003 min
 Response: 215752
 Conc: 9.19 ng/ml



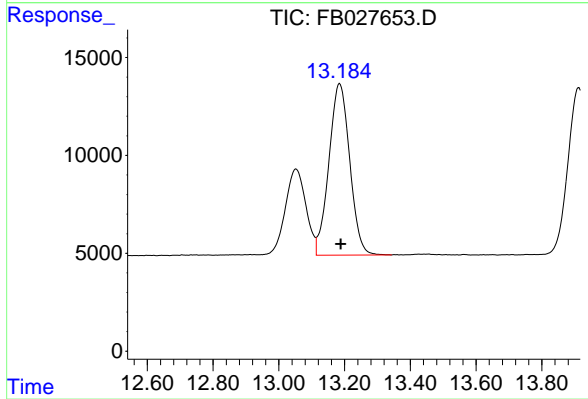
#5 AAA-TFT
 R.T.: 8.788 min
 Delta R.T.: -0.003 min
 Response: 252969
 Conc: 21.74 ng/ml



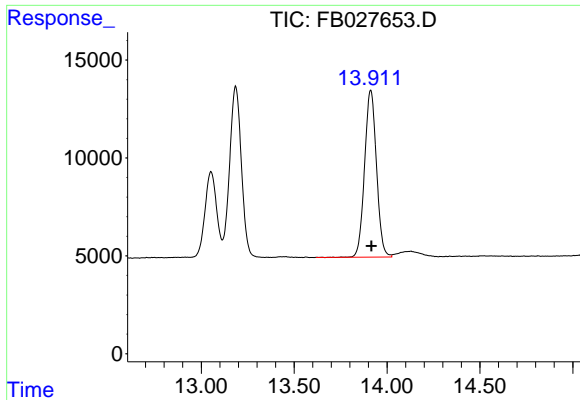
#6 Toluene
 R.T.: 10.616 min
 Delta R.T.: -0.003 min
 Response: 605931
 Conc: 27.14 ng/ml



#7 Ethylbenzene
 R.T.: 13.053 min
 Delta R.T.: -0.003 min
 Response: 197504
 Conc: 9.43 ng/ml



#8 m-Xylene
 R.T.: 13.185 min
 Delta R.T.: -0.003 min
 Response: 385351
 Conc: 18.40 ng/ml



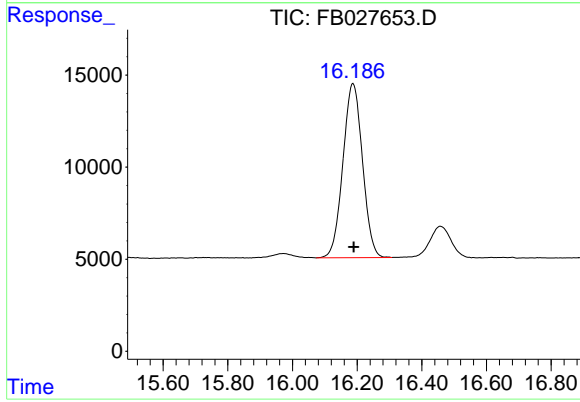
#9 O-Xylene

R.T.: 13.912 min

Delta R.T.: -0.003 min

Response: 378860

Conc: 18.52 ng/ml



#10 1,2,4-Trimethylbenzene

R.T.: 16.188 min

Delta R.T.: -0.002 min

Response: 397115

Conc: 19.11 ng/ml