

Data Path : Z:\pestpcbsrv\HPCHEM1\FID_B\Data\FB071819\
 Data File : FB021749.D
 Signal(s) : FID2B.CH
 Acq On : 18 Jul 2019 13:21
 Operator : MJ/SJ
 Sample : K3618-05MS
 Misc : 5.02/5.00ml DI WATER
 ALS Vial : 10 Sample Multiplier: 1

Integration File: Calibration.e
 Quant Time: Jul 19 01:20:27 2019
 Quant Method : Z:\pestpcbsrv\HPCHEM1\FID_B\Method\FB071519.M
 Quant Title :
 QLast Update : Mon Jul 15 13:30:07 2019
 Response via : Initial Calibration
 Integrator: ChemStation

Volume Inj. : 5 g/ml
 Signal Phase : RTX-502.2
 Signal Info : 60mx0.53mmx3.00um

Compound	R.T.	Response	Conc Units

System Monitoring Compounds			
5) s AAA-TFT	8.991	279705	20.496 ng/ml
Target Compounds			
1) t 2-Methylpentane	4.861	732888	26.577 ng/ml
2) t 2,2,4-Trimethylpentane	7.610	624107	23.610 ng/ml
3) t n-Heptane	7.949	194522	7.845 ng/ml
4) t Benzene	8.085	284657	9.744 ng/ml
6) t Toluene	10.832	576700	28.027 ng/ml
7) t Ethylbenzene	13.276	182795	8.786 ng/ml
8) t m-Xylene	13.410	386716	17.408 ng/ml
9) t O-Xylene	14.139	401832	17.469 ng/ml
10) t 1,2,4-Trimethylbenzene	16.418	400199	16.974 ng/ml

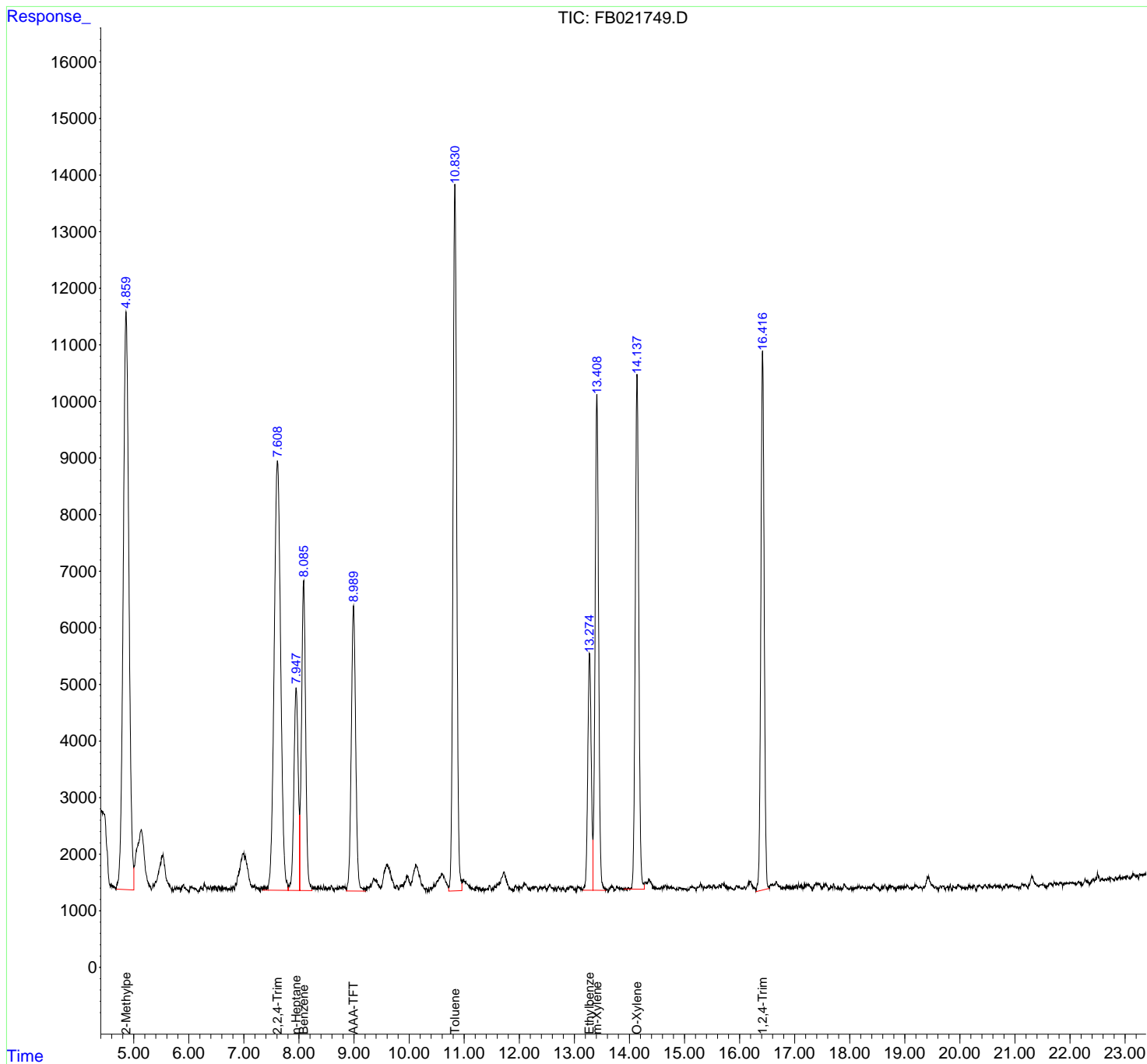
(f)=RT Delta > 1/2 Window

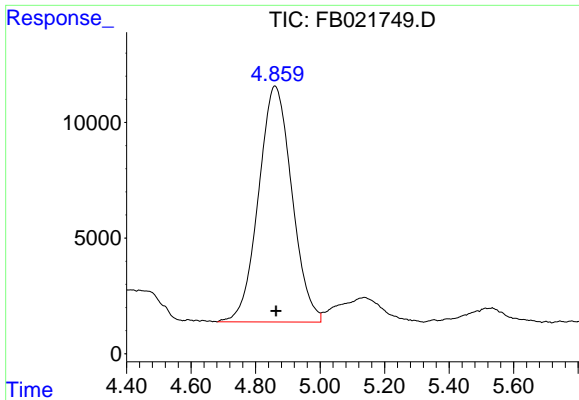
(m)=manual int.

Data Path : Z:\pestpcbsrv\HPCHEM1\FID_B\Data\FB071819\
 Data File : FB021749.D
 Signal(s) : FID2B.CH
 Acq On : 18 Jul 2019 13:21
 Operator : MJ/SJ
 Sample : K3618-05MS
 Misc : 5.02/5.00ml DI WATER
 ALS Vial : 10 Sample Multiplier: 1

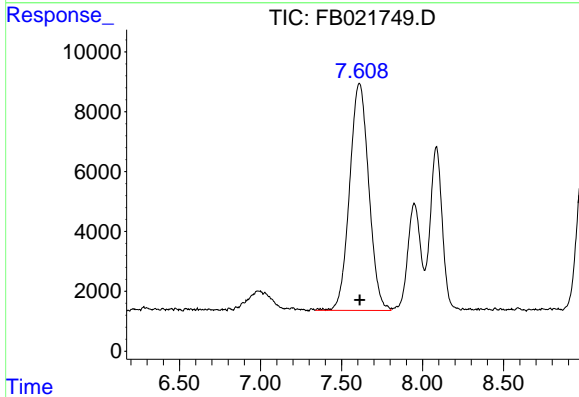
Integration File: Calibration.e
 Quant Time: Jul 19 01:20:27 2019
 Quant Method : Z:\pestpcbsrv\HPCHEM1\FID_B\Method\FB071519.M
 Quant Title :
 QLast Update : Mon Jul 15 13:30:07 2019
 Response via : Initial Calibration
 Integrator: ChemStation

Volume Inj. : 5 g/ml
 Signal Phase : RTX-502.2
 Signal Info : 60mx0.53mmx3.00um

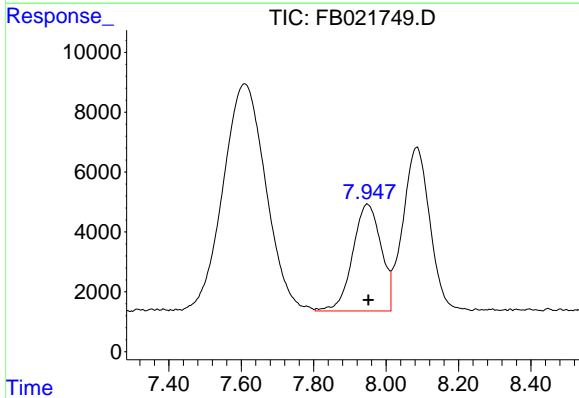




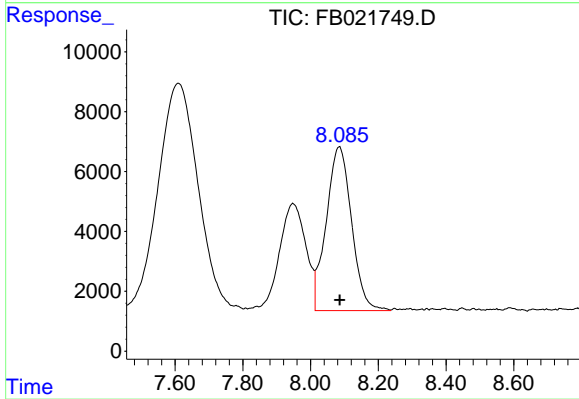
#1 2-Methylpentane
R.T.: 4.861 min
Delta R.T.: -0.002 min
Response: 732888
Conc: 26.58 ng/ml



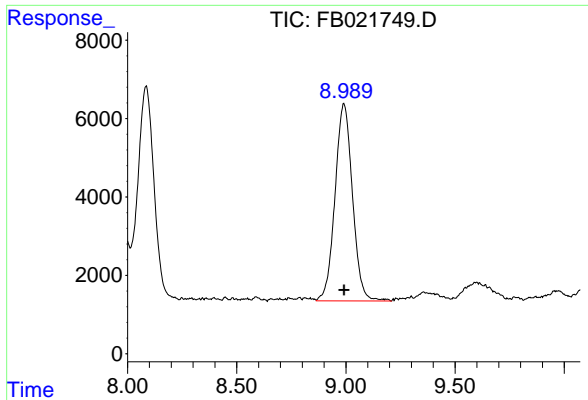
#2 2,2,4-Trimethylpentane
R.T.: 7.610 min
Delta R.T.: -0.002 min
Response: 624107
Conc: 23.61 ng/ml



#3 n-Heptane
R.T.: 7.949 min
Delta R.T.: -0.002 min
Response: 194522
Conc: 7.85 ng/ml

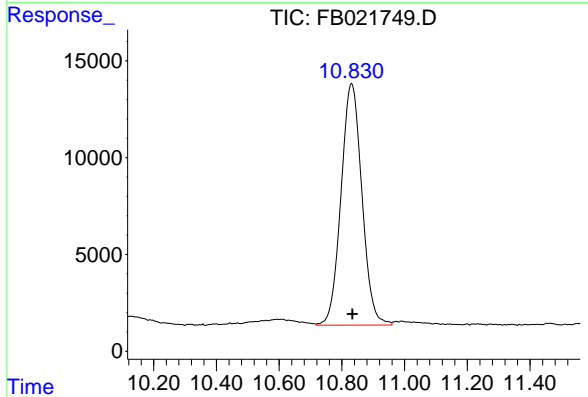


#4 Benzene
R.T.: 8.085 min
Delta R.T.: 0.000 min
Response: 284657
Conc: 9.74 ng/ml



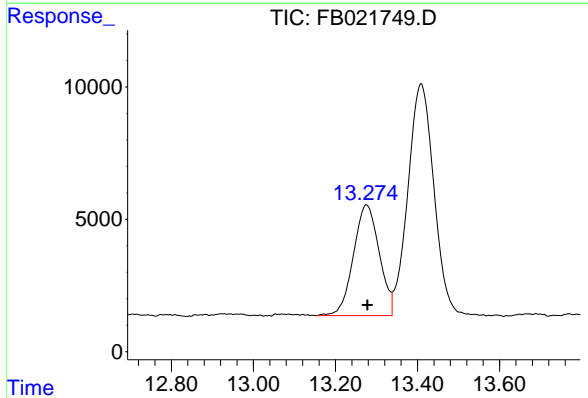
#5 AAA-TFT

R.T.: 8.991 min
 Delta R.T.: 0.000 min
 Response: 279705
 Conc: 20.50 ng/ml



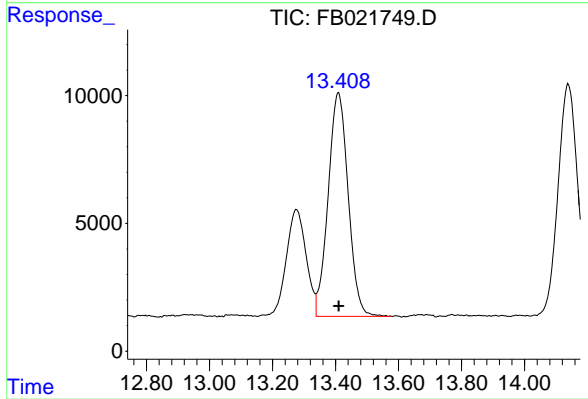
#6 Toluene

R.T.: 10.832 min
 Delta R.T.: -0.002 min
 Response: 576700
 Conc: 28.03 ng/ml



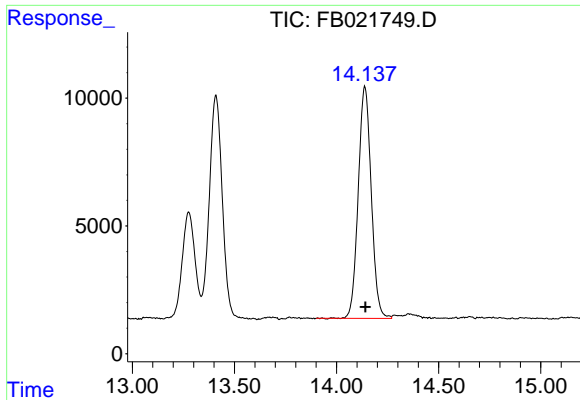
#7 Ethylbenzene

R.T.: 13.276 min
 Delta R.T.: -0.001 min
 Response: 182795
 Conc: 8.79 ng/ml



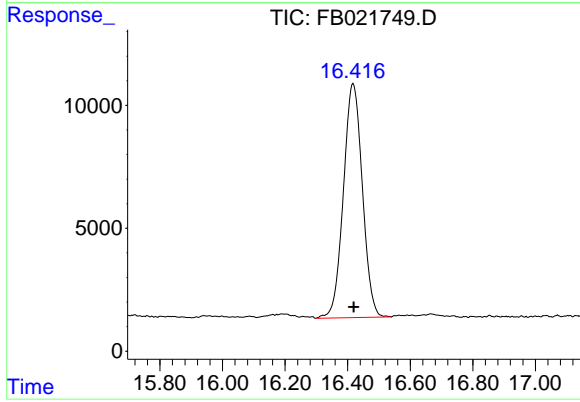
#8 m-Xylene

R.T.: 13.410 min
 Delta R.T.: -0.001 min
 Response: 386716
 Conc: 17.41 ng/ml



#9 O-Xylene

R.T.: 14.139 min
Delta R.T.: -0.001 min
Response: 401832
Conc: 17.47 ng/ml



#10 1,2,4-Trimethylbenzene

R.T.: 16.418 min
Delta R.T.: -0.001 min
Response: 400199
Conc: 16.97 ng/ml