

Data Path : Z:\pestpcbsrv\HPCHEM1\FID_B\Data\FB072522\
 Data File : FB027751.D
 Signal(s) : FID2B.CH
 Acq On : 26 Jul 2022 17:37
 Operator : AJ/MA
 Sample : N3839-01 50X
 Misc : 5.00G/5.00 ML MEOH
 ALS Vial : 9 Sample Multiplier: 1

Instrument :
 FID_B
 ClientSampleId :

Integration File: Calibration.e
 Quant Time: Jul 27 03:44:38 2022
 Quant Method : Z:\pestpcbsrv\HPCHEM1\FID_B\Method\FB071122.M
 Quant Title :
 QLast Update : Mon Jul 11 14:59:12 2022
 Response via : Initial Calibration
 Integrator: ChemStation

Volume Inj. : 5 g/ml
 Signal Phase : RTX-502.2
 Signal Info : 60mx0.53mmx3.00um

Compound	R.T.	Response	Conc Units

System Monitoring Compounds			
5) s AAA-TFT	8.797	238438	20.487 ng/ml
Target Compounds			
1) t 2-Methylpentane	4.709	18627	0.884 ng/ml
4) t Benzene	7.938	8570	0.365 ng/ml

(f)=RT Delta > 1/2 Window

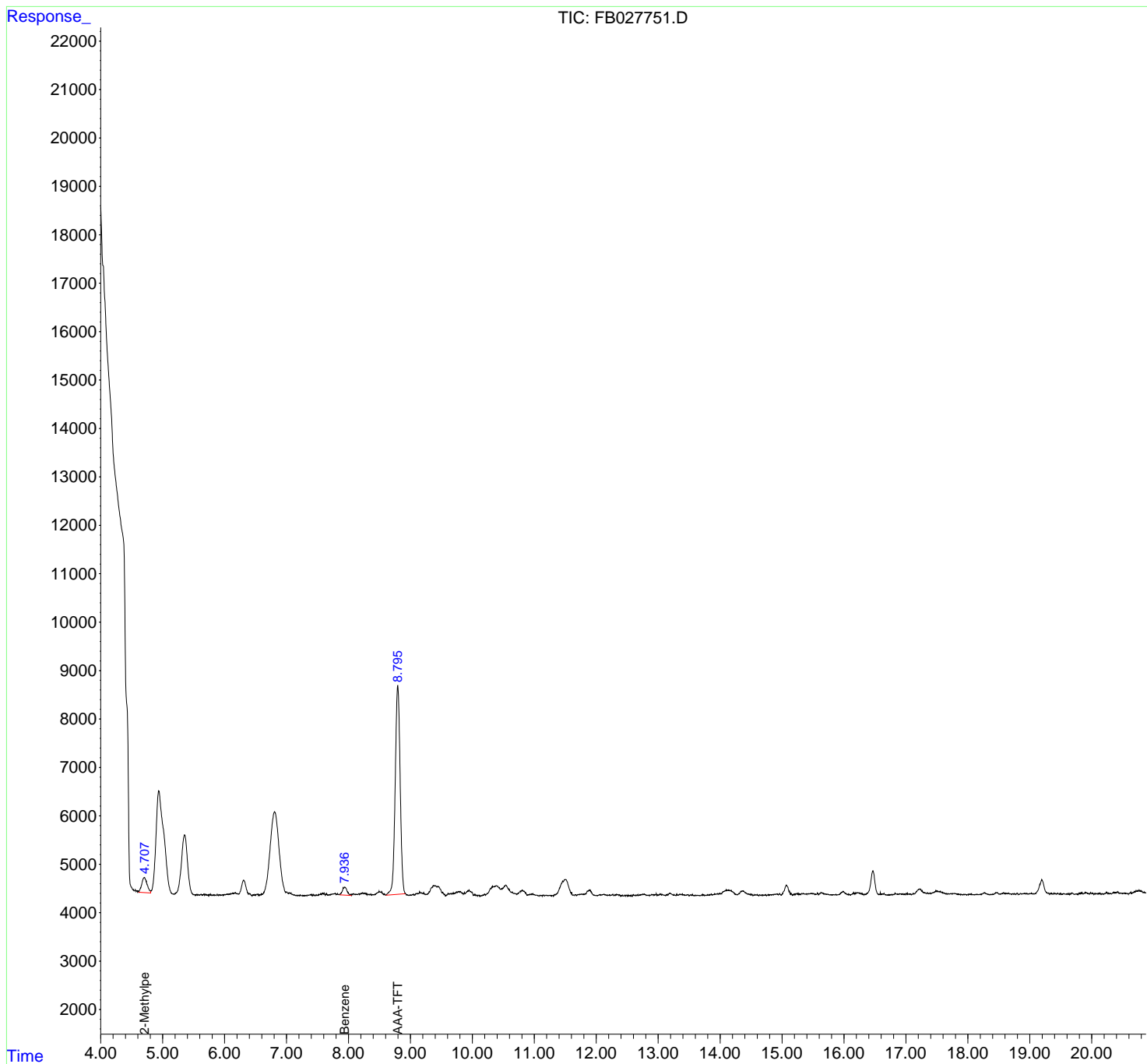
(m)=manual int.

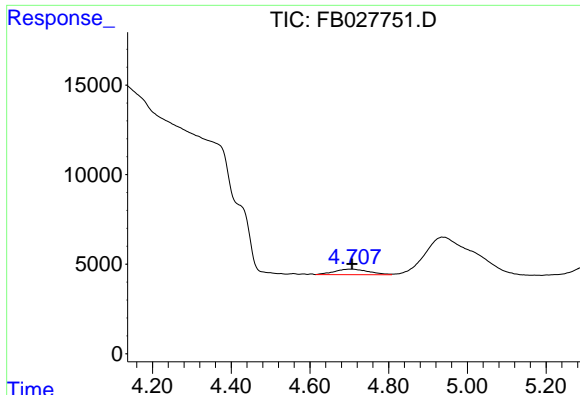
Data Path : Z:\pestpcbsrv\HPCHEM1\FID_B\Data\FB072522\
 Data File : FB027751.D
 Signal(s) : FID2B.CH
 Acq On : 26 Jul 2022 17:37
 Operator : AJ/MA
 Sample : N3839-01 50X
 Misc : 5.00G/5.00 ML MEOH
 ALS Vial : 9 Sample Multiplier: 1

Instrument :
 FID_B
 ClientSampleId :

Integration File: Calibration.e
 Quant Time: Jul 27 03:44:38 2022
 Quant Method : Z:\pestpcbsrv\HPCHEM1\FID_B\Method\FB071122.M
 Quant Title :
 QLast Update : Mon Jul 11 14:59:12 2022
 Response via : Initial Calibration
 Integrator: ChemStation

Volume Inj. : 5 g/ml
 Signal Phase : RTX-502.2
 Signal Info : 60mx0.53mmx3.00um

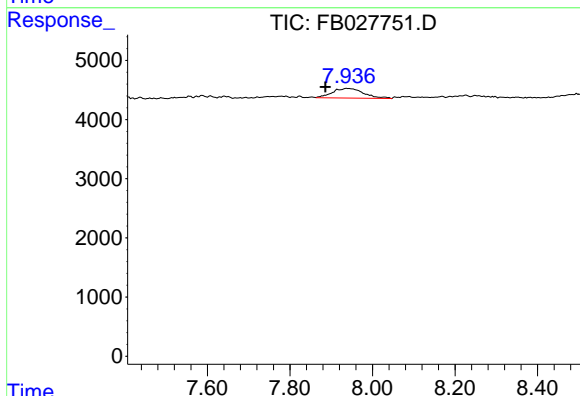




#1 2-Methylpentane

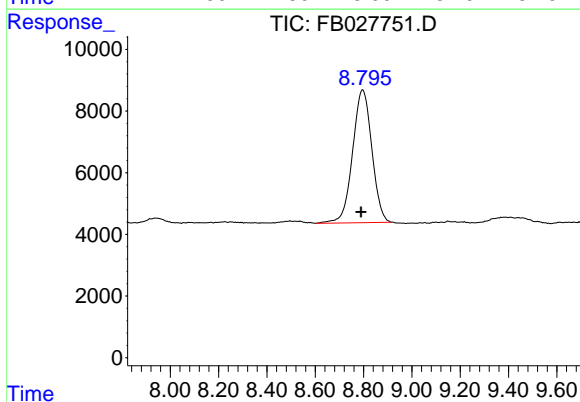
R.T.: 4.709 min
 Delta R.T.: 0.002 min
 Response: 18627
 Conc: 0.88 ng/ml

Instrument :
 FID_B
 ClientSampleId :



#4 Benzene

R.T.: 7.938 min
 Delta R.T.: 0.052 min
 Response: 8570
 Conc: 0.37 ng/ml



#5 AAA-TFT

R.T.: 8.797 min
 Delta R.T.: 0.006 min
 Response: 238438
 Conc: 20.49 ng/ml