

Data Path : Z:\pestpcbsrv\HPCHEM1\FID\_B\Data\FB080519\  
 Data File : FB021918.D  
 Signal(s) : FID2B.CH  
 Acq On : 5 Aug 2019 14:14  
 Operator : DD/AJ  
 Sample : 20 PPB GRO STD  
 Misc :  
 ALS Vial : 12 Sample Multiplier: 1

Integration File: Calibration.e  
 Quant Time: Aug 06 00:58:15 2019  
 Quant Method : Z:\pestpcbsrv\HPCHEM1\FID\_B\Method\FB071519.M  
 Quant Title :  
 QLast Update : Mon Jul 15 13:30:07 2019  
 Response via : Initial Calibration  
 Integrator: ChemStation

Volume Inj. : 5 g/ml  
 Signal Phase : RTX-502.2  
 Signal Info : 60mx0.53mmx3.00um

Compound	R.T.	Response	Conc Units
-----			
System Monitoring Compounds			
5) s AAA-TFT	8.992	291186	21.338 ng/ml
Target Compounds			
1) t 2-Methylpentane	4.862	889267	32.248 ng/ml
2) t 2,2,4-Trimethylpentane	7.610	869325	32.886 ng/ml
3) t n-Heptane	7.950	271614	10.955 ng/ml
4) t Benzene	8.085	306855	10.504 ng/ml
6) t Toluene	10.832	637604	30.987 ng/ml
7) t Ethylbenzene	13.277	207055	9.952 ng/ml
8) t m-Xylene	13.410	438712	19.748 ng/ml
9) t O-Xylene	14.139	463723	20.159 ng/ml
10) t 1,2,4-Trimethylbenzene	16.419	477921	20.271 ng/ml

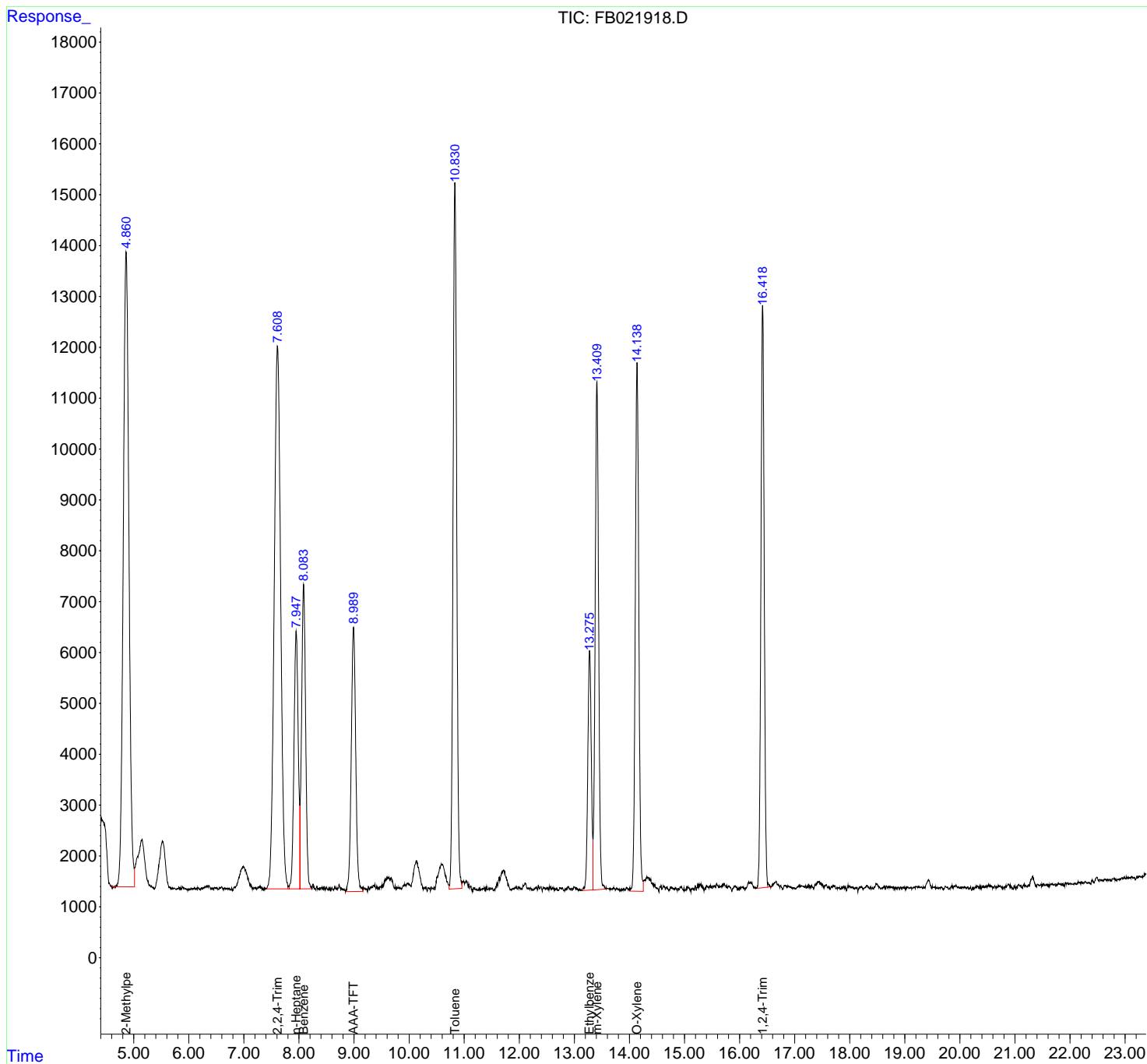
(f)=RT Delta > 1/2 Window

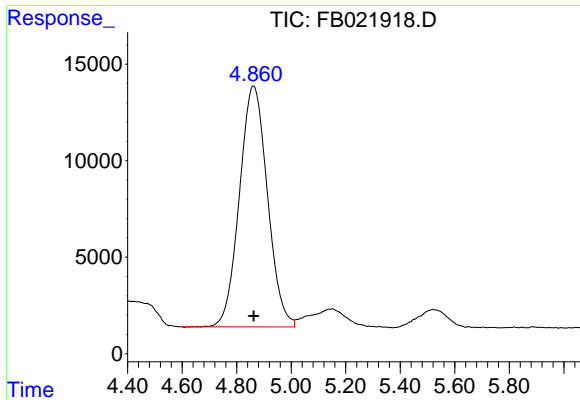
(m)=manual int.

Data Path : Z:\pestpcbsrv\HPCHEM1\FID\_B\Data\FB080519\  
 Data File : FB021918.D  
 Signal(s) : FID2B.CH  
 Acq On : 5 Aug 2019 14:14  
 Operator : DD/AJ  
 Sample : 20 PPB GRO STD  
 Misc :  
 ALS Vial : 12 Sample Multiplier: 1

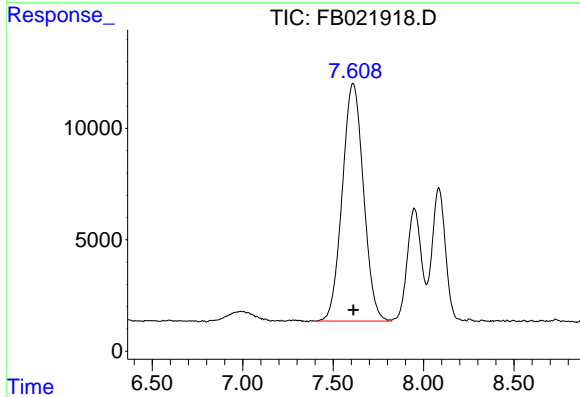
Integration File: Calibration.e  
 Quant Time: Aug 06 00:58:15 2019  
 Quant Method : Z:\pestpcbsrv\HPCHEM1\FID\_B\Method\FB071519.M  
 Quant Title :  
 QLast Update : Mon Jul 15 13:30:07 2019  
 Response via : Initial Calibration  
 Integrator: ChemStation

Volume Inj. : 5 g/ml  
 Signal Phase : RTX-502.2  
 Signal Info : 60mx0.53mmx3.00um

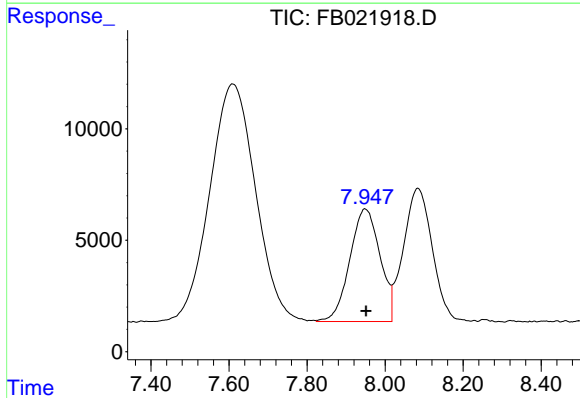




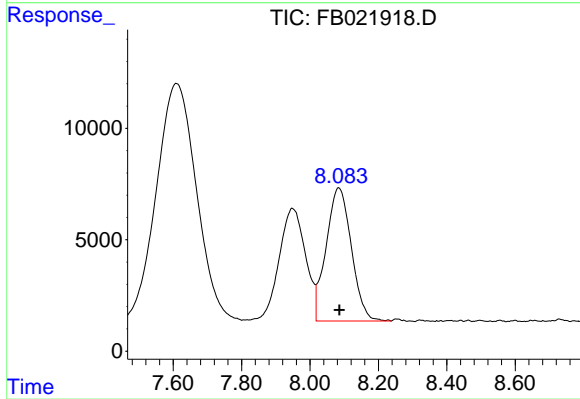
#1 2-Methylpentane  
 R.T.: 4.862 min  
 Delta R.T.: -0.001 min  
 Response: 889267  
 Conc: 32.25 ng/ml



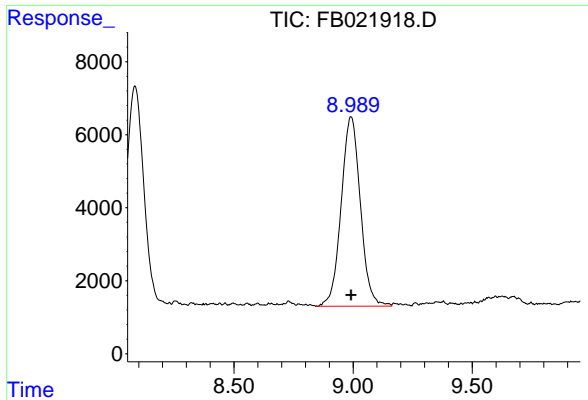
#2 2,2,4-Trimethylpentane  
 R.T.: 7.610 min  
 Delta R.T.: -0.002 min  
 Response: 869325  
 Conc: 32.89 ng/ml



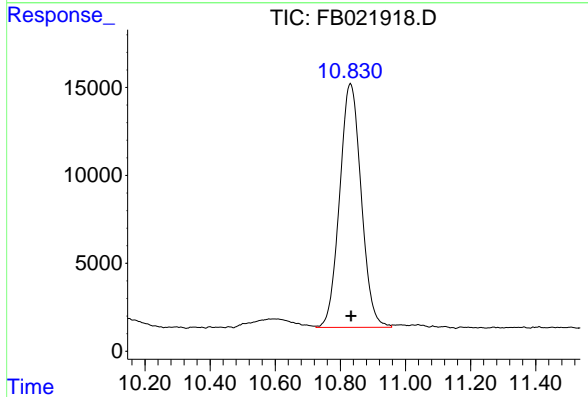
#3 n-Heptane  
 R.T.: 7.950 min  
 Delta R.T.: -0.001 min  
 Response: 271614  
 Conc: 10.95 ng/ml



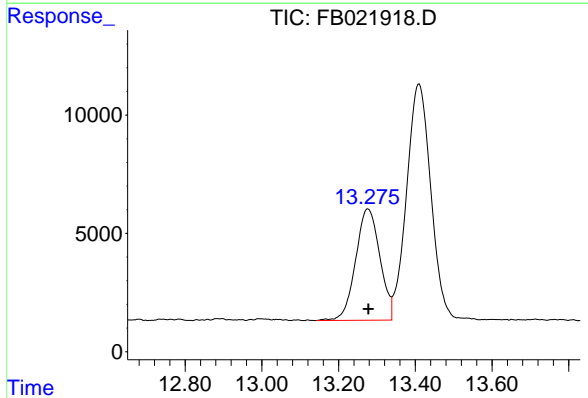
#4 Benzene  
 R.T.: 8.085 min  
 Delta R.T.: -0.001 min  
 Response: 306855  
 Conc: 10.50 ng/ml



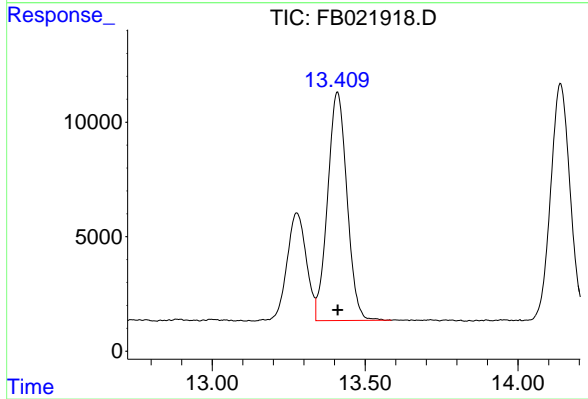
#5 AAA-TFT  
 R.T.: 8.992 min  
 Delta R.T.: 0.000 min  
 Response: 291186  
 Conc: 21.34 ng/ml



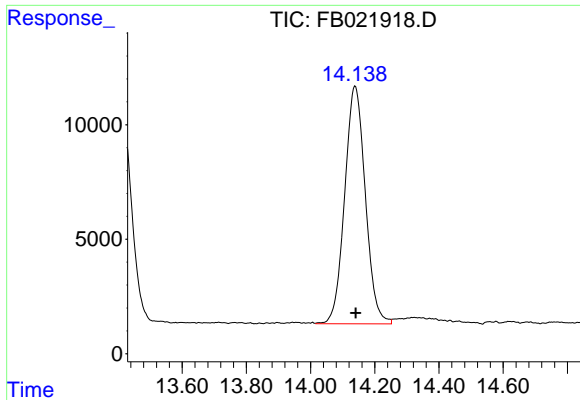
#6 Toluene  
 R.T.: 10.832 min  
 Delta R.T.: -0.002 min  
 Response: 637604  
 Conc: 30.99 ng/ml



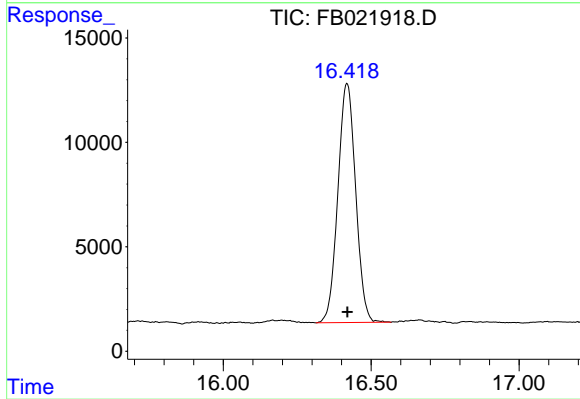
#7 Ethylbenzene  
 R.T.: 13.277 min  
 Delta R.T.: 0.000 min  
 Response: 207055  
 Conc: 9.95 ng/ml



#8 m-Xylene  
 R.T.: 13.410 min  
 Delta R.T.: 0.000 min  
 Response: 438712  
 Conc: 19.75 ng/ml



#9 O-Xylene  
R.T.: 14.139 min  
Delta R.T.: -0.001 min  
Response: 463723  
Conc: 20.16 ng/ml



#10 1,2,4-Trimethylbenzene  
R.T.: 16.419 min  
Delta R.T.: 0.000 min  
Response: 477921  
Conc: 20.27 ng/ml