

Data Path : Z:\pestpcbsrv\HPCHEM1\FID_B\Data\FB080519\
Data File : FB021919.D
Signal(s) : FID2B.CH
Acq On : 5 Aug 2019 14:45
Operator : DD/AJ
Sample : K4156-02
Misc : 4.44/5.00ml DI WATER
ALS Vial : 13 Sample Multiplier: 1

Integration File: Calibration.e
Quant Time: Aug 06 00:58:26 2019
Quant Method : Z:\pestpcbsrv\HPCHEM1\FID_B\Method\FB071519.M
Quant Title :
QLast Update : Mon Jul 15 13:30:07 2019
Response via : Initial Calibration
Integrator: ChemStation

Volume Inj. : 5 g/ml
Signal Phase : RTX-502.2
Signal Info : 60mx0.53mmx3.00um

Compound	R.T.	Response	Conc Units

System Monitoring Compounds			
Target Compounds			
7) t Ethylbenzene	13.302	1461	0.070 ng/ml

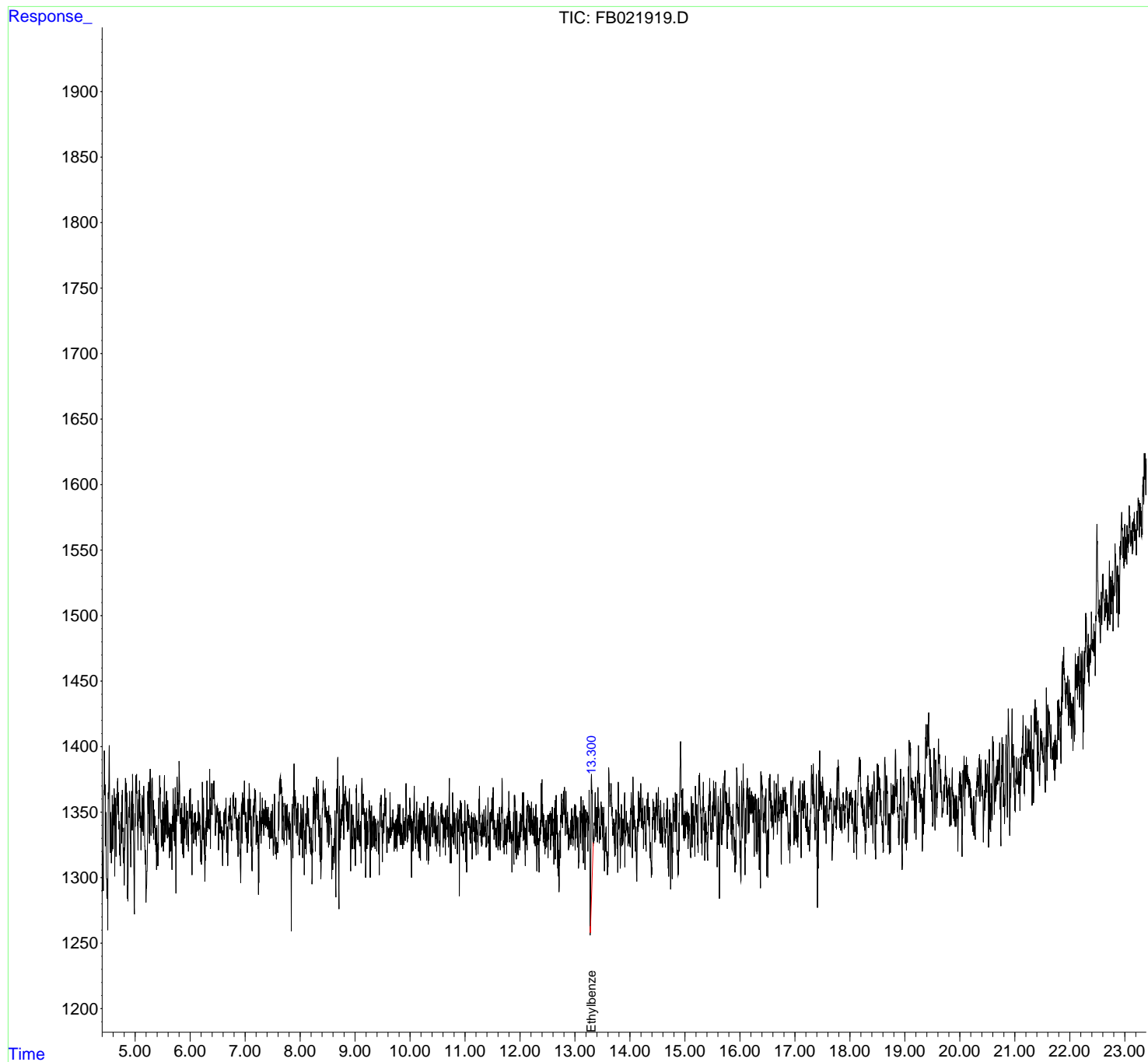
(f)=RT Delta > 1/2 Window

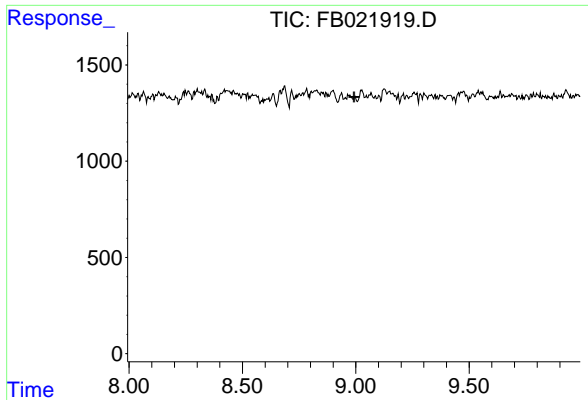
(m)=manual int.

Data Path : Z:\pestpcbsrv\HPCHEM1\FID_B\Data\FB080519\
Data File : FB021919.D
Signal(s) : FID2B.CH
Acq On : 5 Aug 2019 14:45
Operator : DD/AJ
Sample : K4156-02
Misc : 4.44/5.00ml DI WATER
ALS Vial : 13 Sample Multiplier: 1

Integration File: Calibration.e
Quant Time: Aug 06 00:58:26 2019
Quant Method : Z:\pestpcbsrv\HPCHEM1\FID_B\Method\FB071519.M
Quant Title :
QLast Update : Mon Jul 15 13:30:07 2019
Response via : Initial Calibration
Integrator: ChemStation

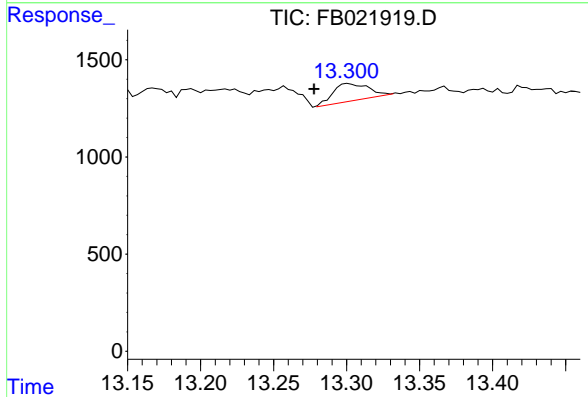
Volume Inj. : 5 g/ml
Signal Phase : RTX-502.2
Signal Info : 60mx0.53mmx3.00um





#5 AAA-TFT

R.T.: 0.000 min
Exp R.T.: 8.992 min
Response: 0
Conc: N.D.



#7 Ethylbenzene

R.T.: 13.302 min
Delta R.T.: 0.024 min
Response: 1461
Conc: 0.07 ng/ml