

Data Path : Z:\pestpcbsrv\HPCHEM1\FID_B\Data\FB080618\
 Data File : FB017161.D
 Signal(s) : FID2B.CH
 Acq On : 6 Aug 2018 10:51
 Operator : MJ/SJ
 Sample : BSF0806S1
 Misc : 5.03g/5.00ml DI water
 ALS Vial : 3 Sample Multiplier: 1

Integration File: Calibration.e
 Quant Time: Aug 06 12:36:14 2018
 Quant Method : Z:\pestpcbsrv\HPCHEM1\FID_B\Method\FB072718.M
 Quant Title :
 QLast Update : Fri Jul 27 13:23:50 2018
 Response via : Initial Calibration
 Integrator: ChemStation

Volume Inj. : 5 g/ml
 Signal Phase : RTX-502.2
 Signal Info : 60mx0.53mmx3.00um

Compound	R.T.	Response	Conc Units

System Monitoring Compounds			
5) s AAA-TFT	9.114	168222	21.256 ng/ml
Target Compounds			
1) t 2-Methylpentane	4.965	434690	30.114 ng/ml
2) t 2,2,4-Trimethylpentane	7.729	425706	30.432 ng/ml
3) t n-Heptane	8.069	139642	9.931 ng/ml
4) t Benzene	8.208	174028	9.906 ng/ml
6) t Toluene	10.963	416433	30.324 ng/ml
7) t Ethylbenzene	13.412	141132	10.350 ng/ml
8) t m-Xylene	13.545	297093	20.649 ng/ml
9) t O-Xylene	14.276	312620	20.499 ng/ml
10) t 1,2,4-Trimethylbenzene	16.559	368302	19.955 ng/ml

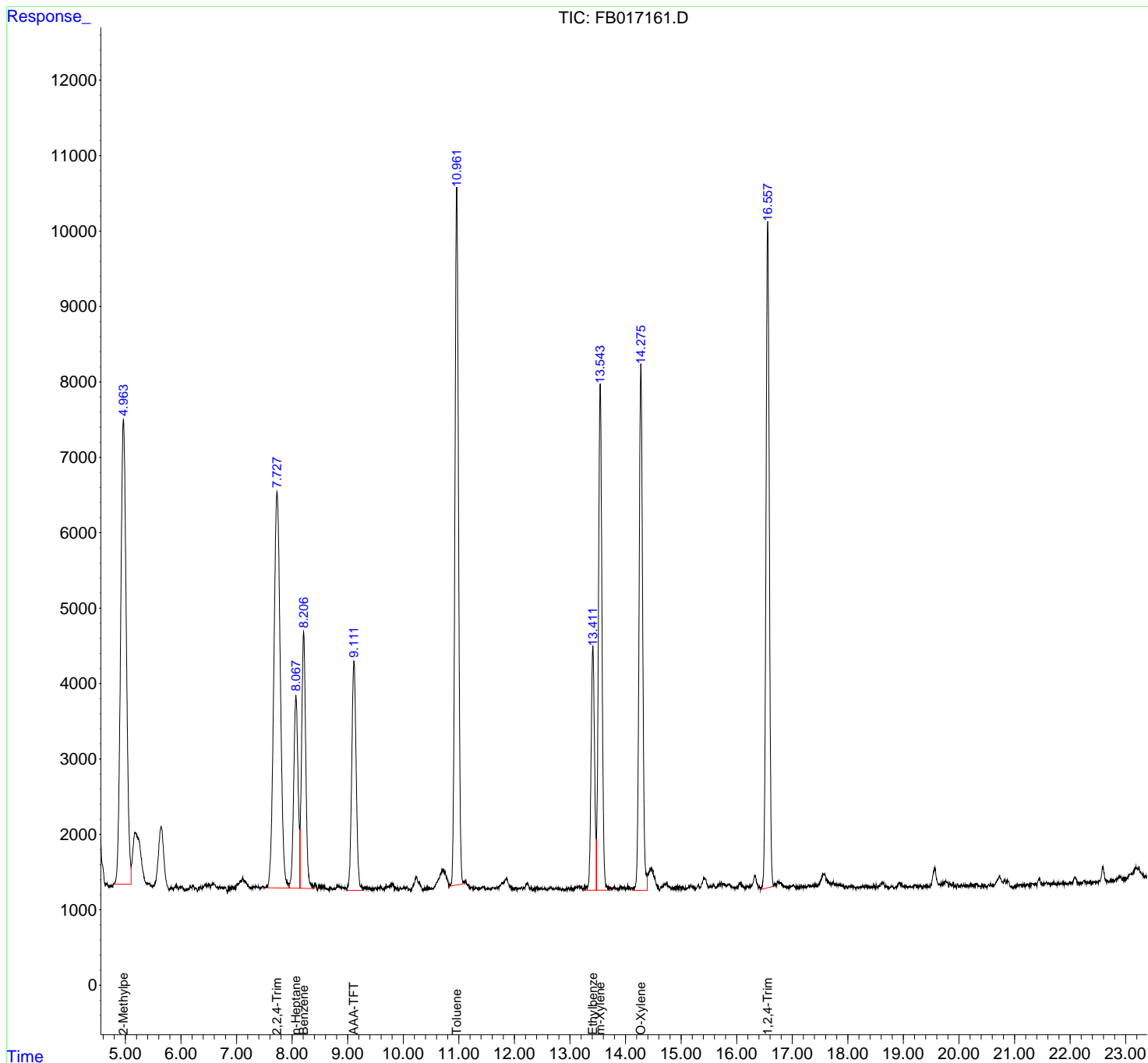
(f)=RT Delta > 1/2 Window

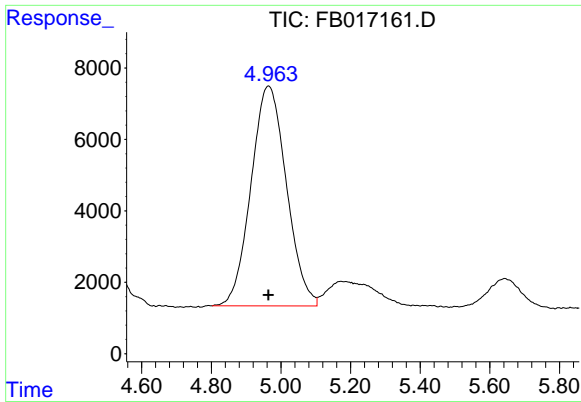
(m)=manual int.

Data Path : Z:\pestpcbsrv\HPCHEM1\FID_B\Data\FB080618\
 Data File : FB017161.D
 Signal(s) : FID2B.CH
 Acq On : 6 Aug 2018 10:51
 Operator : MJ/SJ
 Sample : BSF0806S1
 Misc : 5.03g/5.00ml DI water
 ALS Vial : 3 Sample Multiplier: 1

Integration File: Calibration.e
 Quant Time: Aug 06 12:36:14 2018
 Quant Method : Z:\pestpcbsrv\HPCHEM1\FID_B\Method\FB072718.M
 Quant Title :
 QLast Update : Fri Jul 27 13:23:50 2018
 Response via : Initial Calibration
 Integrator: ChemStation

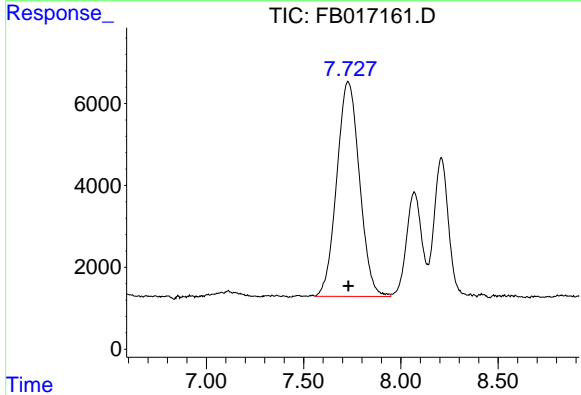
Volume Inj. : 5 g/ml
 Signal Phase : RTX-502.2
 Signal Info : 60mx0.53mmx3.00um





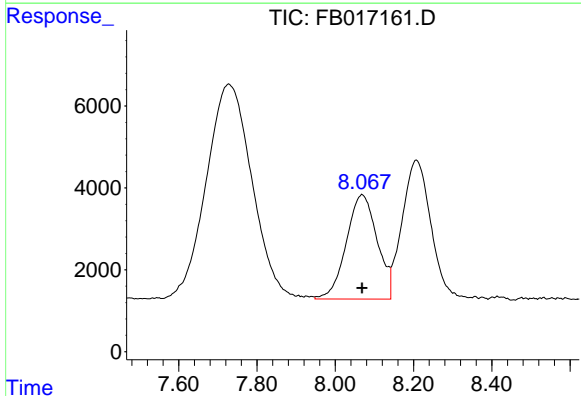
#1 2-Methylpentane

R.T.: 4.965 min
 Delta R.T.: 0.000 min
 Response: 434690
 Conc: 30.11 ng/ml



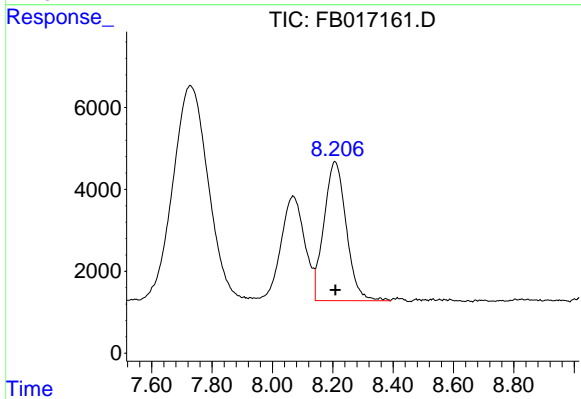
#2 2,2,4-Trimethylpentane

R.T.: 7.729 min
 Delta R.T.: -0.002 min
 Response: 425706
 Conc: 30.43 ng/ml



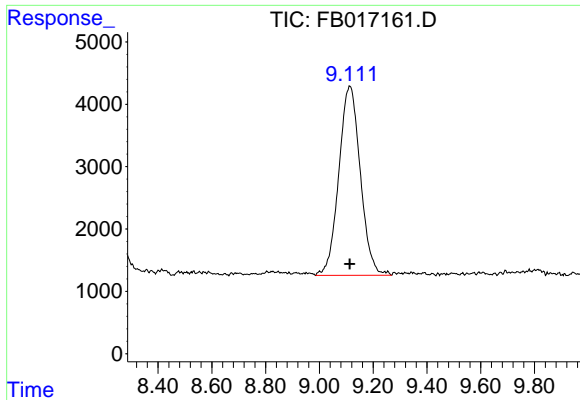
#3 n-Heptane

R.T.: 8.069 min
 Delta R.T.: 0.000 min
 Response: 139642
 Conc: 9.93 ng/ml

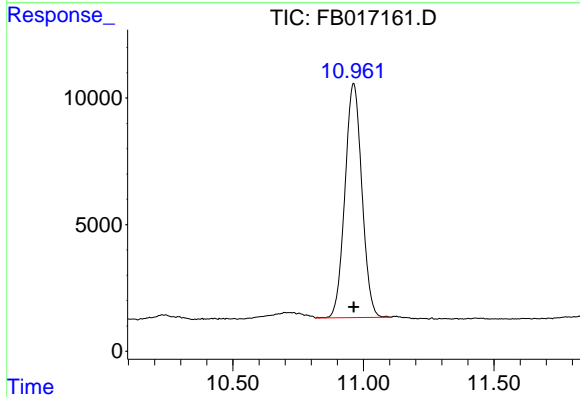


#4 Benzene

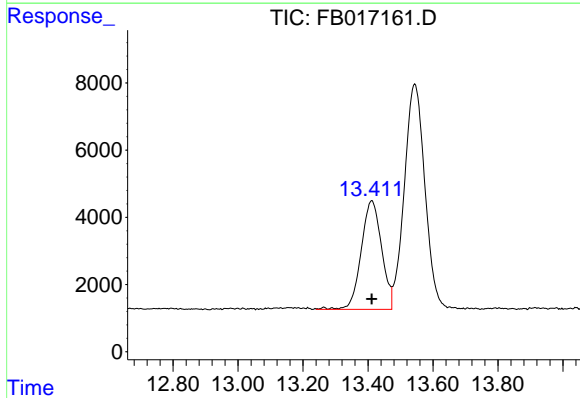
R.T.: 8.208 min
 Delta R.T.: 0.000 min
 Response: 174028
 Conc: 9.91 ng/ml



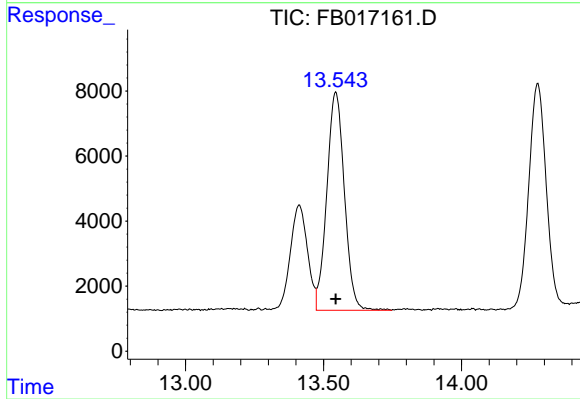
#5 AAA-TFT
 R.T.: 9.114 min
 Delta R.T.: 0.000 min
 Response: 168222
 Conc: 21.26 ng/ml



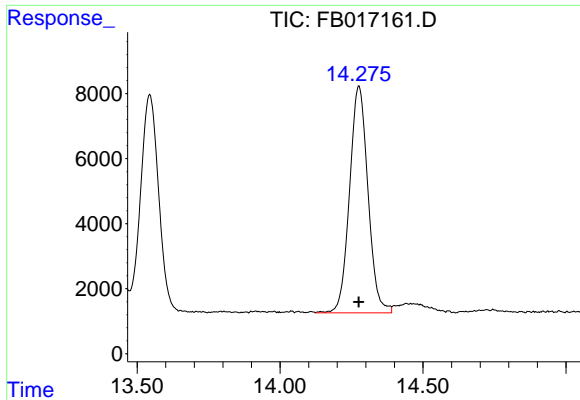
#6 Toluene
 R.T.: 10.963 min
 Delta R.T.: 0.000 min
 Response: 416433
 Conc: 30.32 ng/ml



#7 Ethylbenzene
 R.T.: 13.412 min
 Delta R.T.: 0.000 min
 Response: 141132
 Conc: 10.35 ng/ml

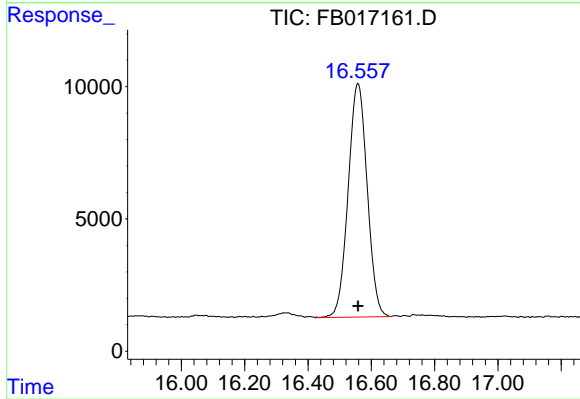


#8 m-Xylene
 R.T.: 13.545 min
 Delta R.T.: 0.000 min
 Response: 297093
 Conc: 20.65 ng/ml



#9 O-Xylene

R.T.: 14.276 min
Delta R.T.: 0.000 min
Response: 312620
Conc: 20.50 ng/ml



#10 1,2,4-Trimethylbenzene

R.T.: 16.559 min
Delta R.T.: 0.000 min
Response: 368302
Conc: 19.95 ng/ml