

Data Path : Z:\pestpcbsrv\HPCHEM1\FID_B\Data\FB080819\
 Data File : FB021950.D
 Signal(s) : FID2B.CH
 Acq On : 8 Aug 2019 10:48
 Operator : DD/AJ
 Sample : K4200-03
 Misc : 5.02/5.00ml DI WATER
 ALS Vial : 4 Sample Multiplier: 1

Integration File: Calibration.e
 Quant Time: Aug 09 02:41:29 2019
 Quant Method : Z:\pestpcbsrv\HPCHEM1\FID_B\Method\FB071519.M
 Quant Title :
 QLast Update : Mon Jul 15 13:30:07 2019
 Response via : Initial Calibration
 Integrator: ChemStation

Volume Inj. : 5 g/ml
 Signal Phase : RTX-502.2
 Signal Info : 60mx0.53mmx3.00um

Compound	R.T.	Response	Conc Units

System Monitoring Compounds			
5) s AAA-TFT	8.990	258907	18.972 ng/ml
Target Compounds			
4) t Benzene	8.060	2073	0.071 ng/ml
6) t Toluene	10.815	822	0.040 ng/ml
8) t m-Xylene	13.407	2827	0.127 ng/ml
10) t 1,2,4-Trimethylbenzene	16.422	2386	0.101 ng/ml

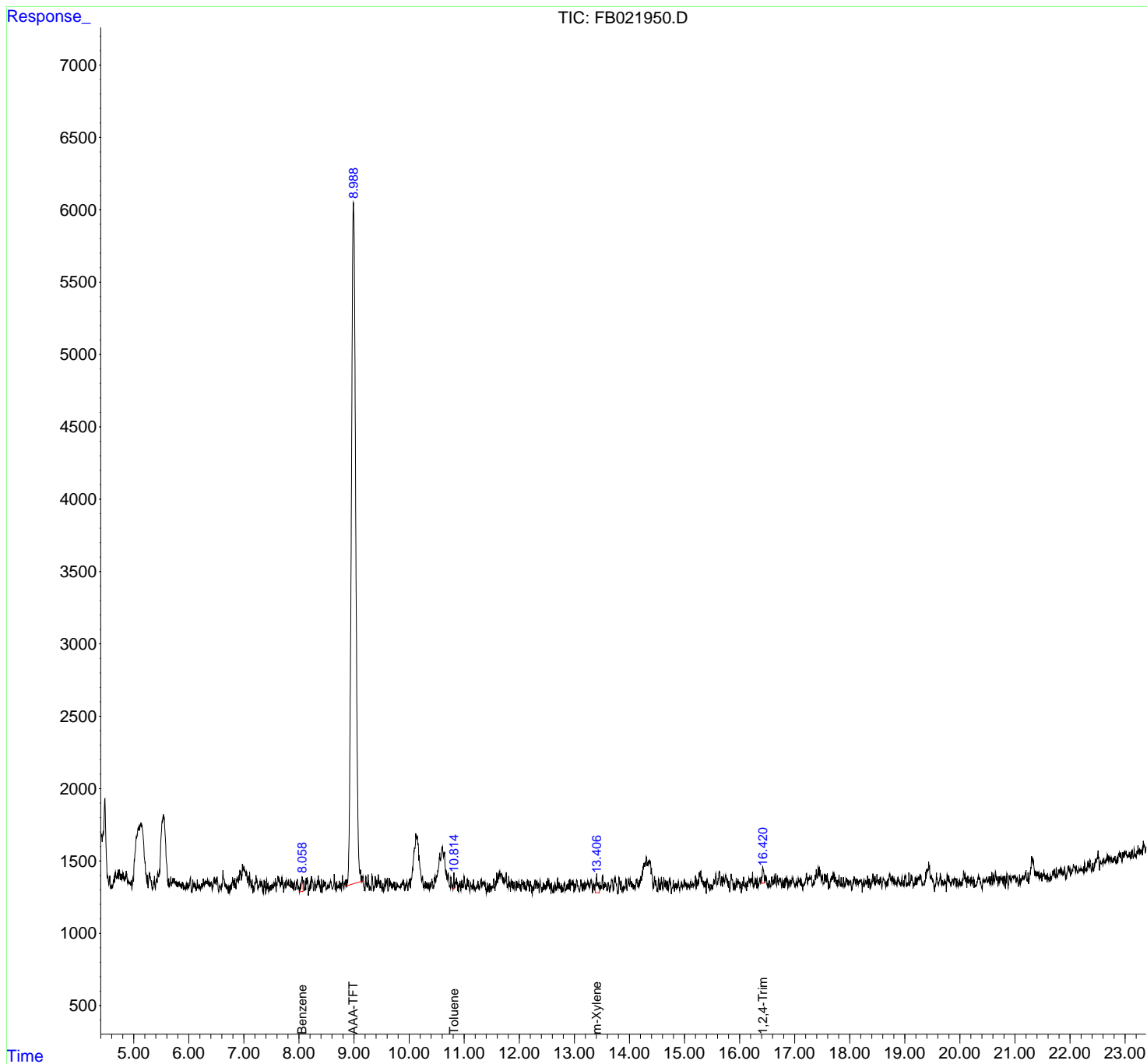
(f)=RT Delta > 1/2 Window

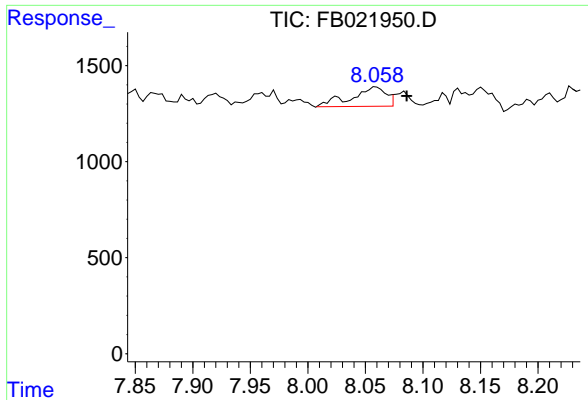
(m)=manual int.

Data Path : Z:\pestpcbsrv\HPCHEM1\FID_B\Data\FB080819\
 Data File : FB021950.D
 Signal(s) : FID2B.CH
 Acq On : 8 Aug 2019 10:48
 Operator : DD/AJ
 Sample : K4200-03
 Misc : 5.02/5.00ml DI WATER
 ALS Vial : 4 Sample Multiplier: 1

Integration File: Calibration.e
 Quant Time: Aug 09 02:41:29 2019
 Quant Method : Z:\pestpcbsrv\HPCHEM1\FID_B\Method\FB071519.M
 Quant Title :
 QLast Update : Mon Jul 15 13:30:07 2019
 Response via : Initial Calibration
 Integrator: ChemStation

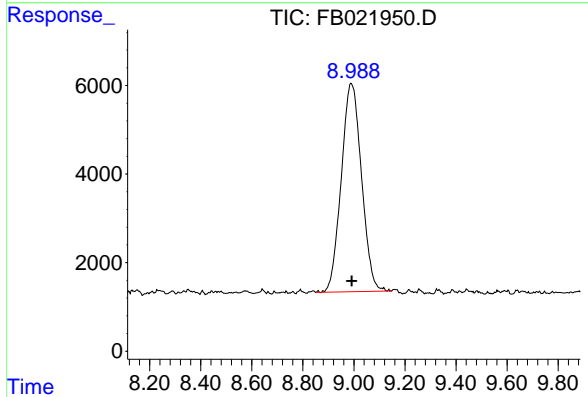
Volume Inj. : 5 g/ml
 Signal Phase : RTX-502.2
 Signal Info : 60mx0.53mmx3.00um





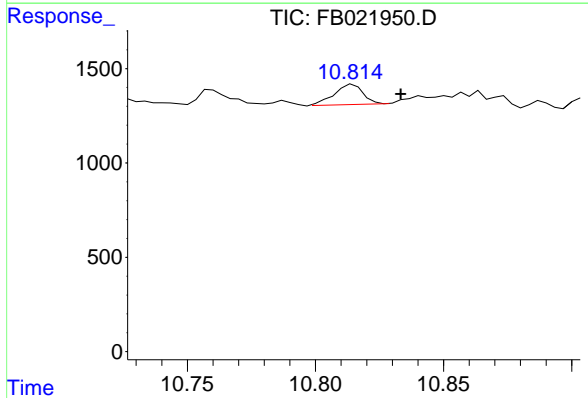
#4 Benzene

R.T.: 8.060 min
 Delta R.T.: -0.026 min
 Response: 2073
 Conc: 0.07 ng/ml



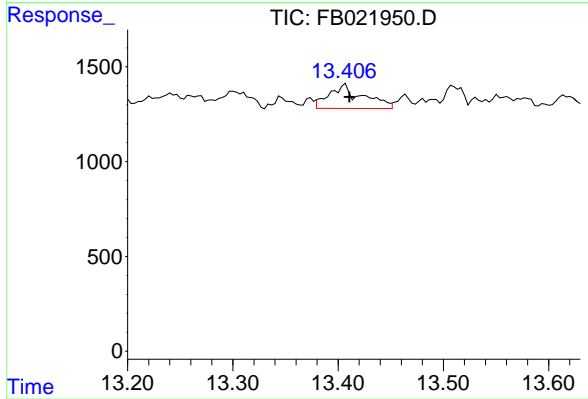
#5 AAA-TFT

R.T.: 8.990 min
 Delta R.T.: -0.003 min
 Response: 258907
 Conc: 18.97 ng/ml



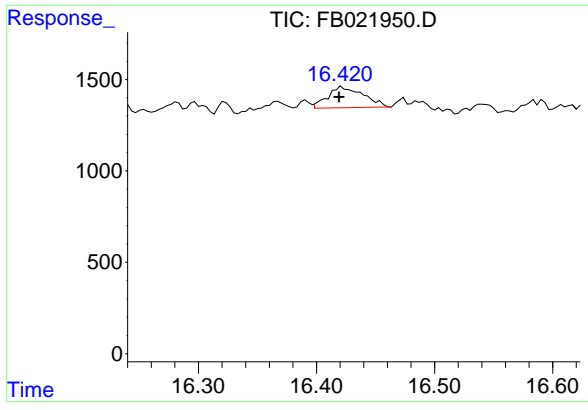
#6 Toluene

R.T.: 10.815 min
 Delta R.T.: -0.018 min
 Response: 822
 Conc: 0.04 ng/ml



#8 m-Xylene

R.T.: 13.407 min
 Delta R.T.: -0.004 min
 Response: 2827
 Conc: 0.13 ng/ml



#10 1,2,4-Trimethylbenzene

R.T.: 16.422 min
Delta R.T.: 0.003 min
Response: 2386
Conc: 0.10 ng/ml