

Data Path : Z:\pestpcbsrv\HPCHEM1\FID_B\Data\FB080918\
 Data File : FB017220.D
 Signal(s) : FID2B.CH
 Acq On : 9 Aug 2018 8:17
 Operator : MJ/SJ
 Sample : 20 PPB GRO STD
 Misc :
 ALS Vial : 1 Sample Multiplier: 1

Integration File: Calibration.e
 Quant Time: Aug 09 13:42:55 2018
 Quant Method : Z:\pestpcbsrv\HPCHEM1\FID_B\Method\FB080818.M
 Quant Title :
 QLast Update : Wed Aug 08 11:39:03 2018
 Response via : Initial Calibration
 Integrator: ChemStation

Volume Inj. : 5 g/ml
 Signal Phase : RTX-502.2
 Signal Info : 60mx0.53mmx3.00um

Compound	R.T.	Response	Conc Units

System Monitoring Compounds			
5) s AAA-TFT	9.113	216756	23.134 ng/ml
Target Compounds			
1) t 2-Methylpentane	4.964	527672	30.859 ng/ml
2) t 2,2,4-Trimethylpentane	7.729	536629	31.760 ng/ml
3) t n-Heptane	8.067	187834	11.660 ng/ml
4) t Benzene	8.207	223694	11.038 ng/ml
6) t Toluene	10.962	535821	32.507 ng/ml
7) t Ethylbenzene	13.411	177679	10.650 ng/ml
8) t m-Xylene	13.544	376455	20.082 ng/ml
9) t O-Xylene	14.276	397839	19.575 ng/ml
10) t 1,2,4-Trimethylbenzene	16.558	478830	21.380 ng/ml

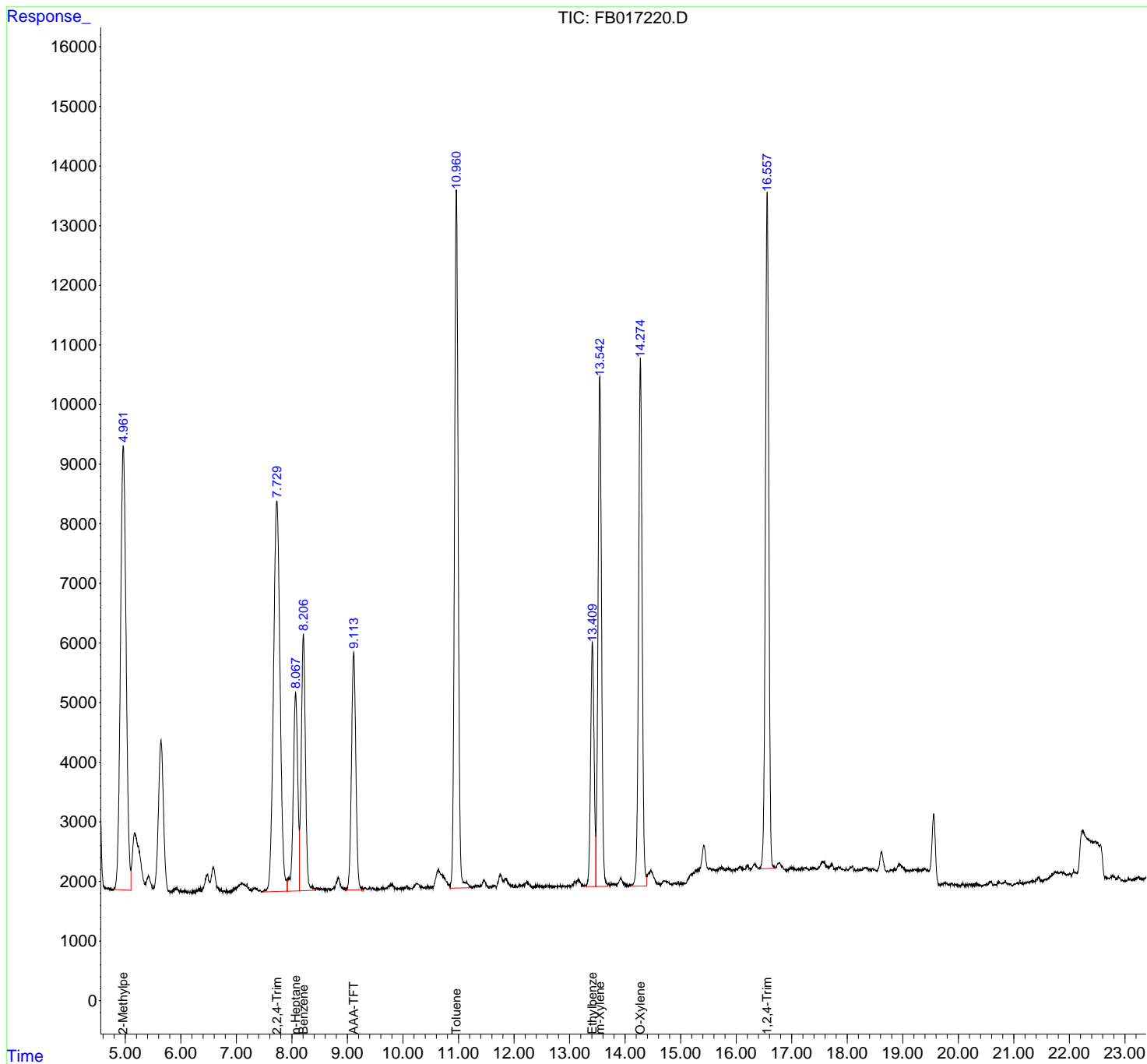
(f)=RT Delta > 1/2 Window

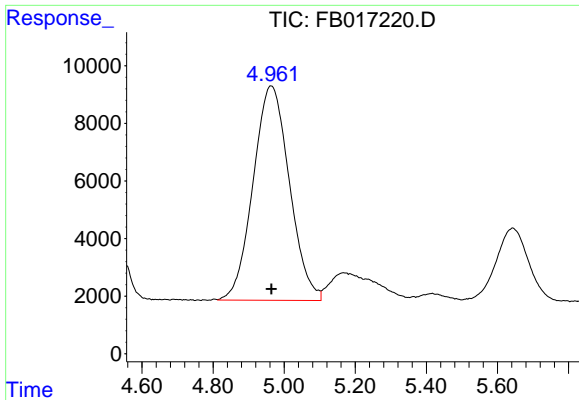
(m)=manual int.

Data Path : Z:\pestpcbsrv\HPCHEM1\FID_B\Data\FB080918\
 Data File : FB017220.D
 Signal(s) : FID2B.CH
 Acq On : 9 Aug 2018 8:17
 Operator : MJ/SJ
 Sample : 20 PPB GRO STD
 Misc :
 ALS Vial : 1 Sample Multiplier: 1

Integration File: Calibration.e
 Quant Time: Aug 09 13:42:55 2018
 Quant Method : Z:\pestpcbsrv\HPCHEM1\FID_B\Method\FB080818.M
 Quant Title :
 QLast Update : Wed Aug 08 11:39:03 2018
 Response via : Initial Calibration
 Integrator: ChemStation

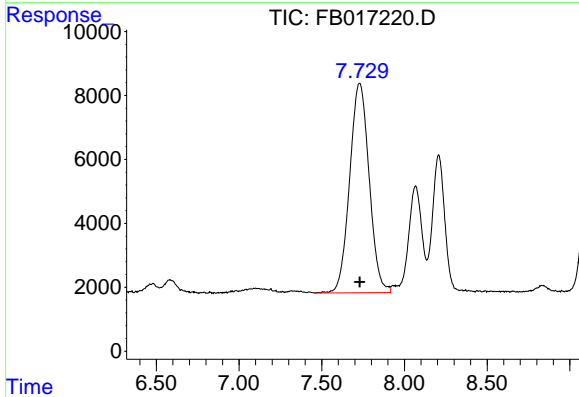
Volume Inj. : 5 g/ml
 Signal Phase : RTX-502.2
 Signal Info : 60mx0.53mmx3.00um





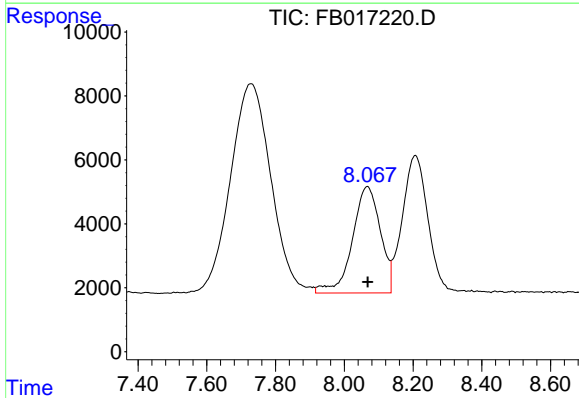
#1 2-Methylpentane

R.T.: 4.964 min
 Delta R.T.: 0.000 min
 Response: 527672
 Conc: 30.86 ng/ml



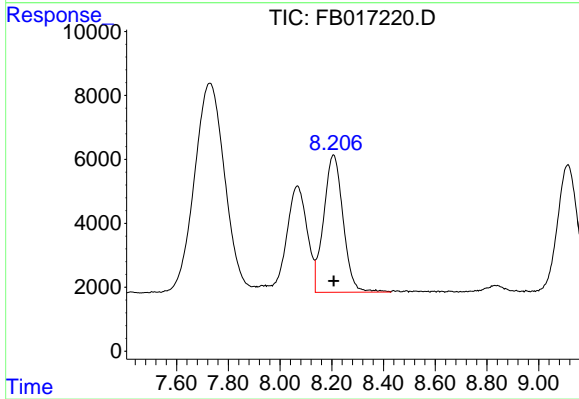
#2 2,2,4-Trimethylpentane

R.T.: 7.729 min
 Delta R.T.: 0.000 min
 Response: 536629
 Conc: 31.76 ng/ml



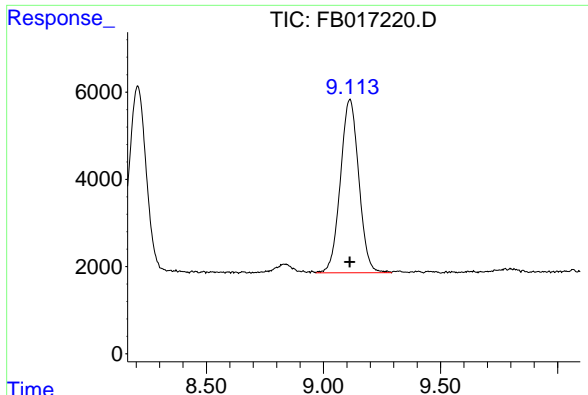
#3 n-Heptane

R.T.: 8.067 min
 Delta R.T.: 0.000 min
 Response: 187834
 Conc: 11.66 ng/ml

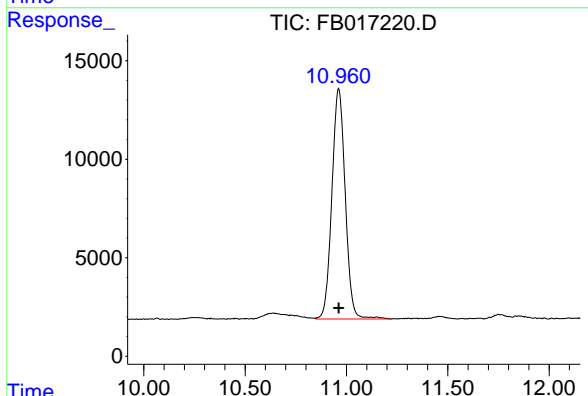


#4 Benzene

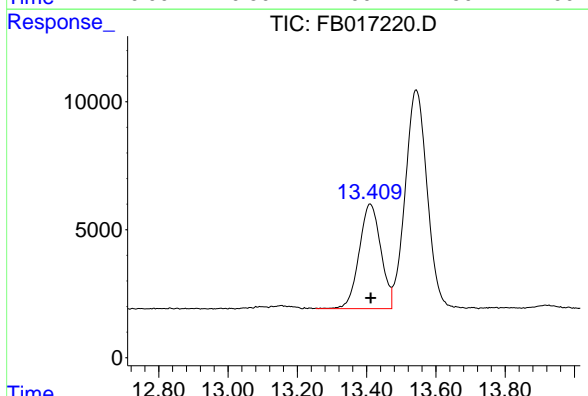
R.T.: 8.207 min
 Delta R.T.: 0.000 min
 Response: 223694
 Conc: 11.04 ng/ml



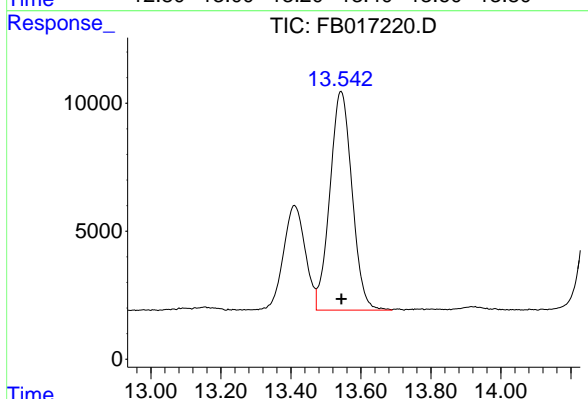
#5 AAA-TFT
 R.T.: 9.113 min
 Delta R.T.: 0.000 min
 Response: 216756
 Conc: 23.13 ng/ml



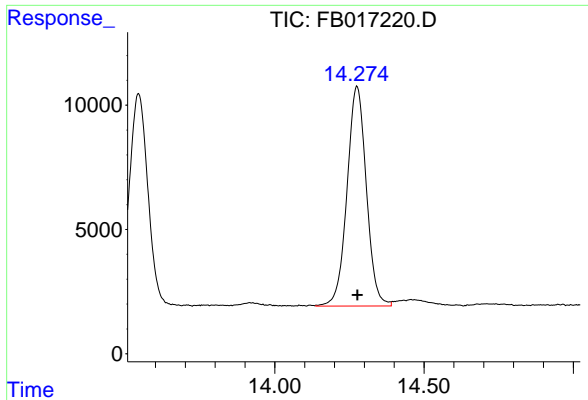
#6 Toluene
 R.T.: 10.962 min
 Delta R.T.: 0.000 min
 Response: 535821
 Conc: 32.51 ng/ml



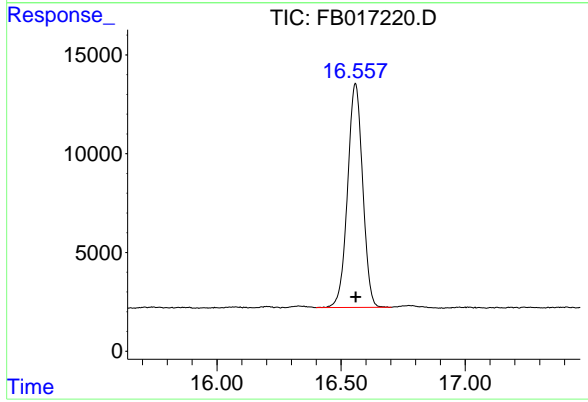
#7 Ethylbenzene
 R.T.: 13.411 min
 Delta R.T.: -0.001 min
 Response: 177679
 Conc: 10.65 ng/ml



#8 m-Xylene
 R.T.: 13.544 min
 Delta R.T.: 0.000 min
 Response: 376455
 Conc: 20.08 ng/ml



#9 O-Xylene
R.T.: 14.276 min
Delta R.T.: 0.000 min
Response: 397839
Conc: 19.58 ng/ml



#10 1,2,4-Trimethylbenzene
R.T.: 16.558 min
Delta R.T.: 0.000 min
Response: 478830
Conc: 21.38 ng/ml