

Data Path : Z:\pestpcbsrv\HPCHEM1\FID\_B\Data\FB081321\  
 Data File : FB026149.D  
 Signal(s) : FID2B.CH  
 Acq On : 13 Aug 2021 17:20  
 Operator : AJ/MA  
 Sample : 10 GRO STD  
 Misc :  
 ALS Vial : 3 Sample Multiplier: 1

Instrument :  
 FID\_B  
 ClientSampleId :

Integration File: Calibration.e  
 Quant Time: Aug 13 22:06:56 2021  
 Quant Method : Z:\pestpcbsrv\HPCHEM1\FID\_B\Method\FB081321.M  
 Quant Title :  
 QLast Update : Fri Aug 13 22:06:01 2021  
 Response via : Initial Calibration  
 Integrator: ChemStation

Volume Inj. : 5 g/ml  
 Signal Phase : RTX-502.2  
 Signal Info : 60mx0.53mmx3.00um

Compound	R.T.	Response	Conc Units
-----			
System Monitoring Compounds			
5) s AAA-TFT	8.845	140201	9.234 ng/ml
Target Compounds			
1) t 2-Methylpentane	4.839	323917	14.786 ng/ml
2) t 2,2,4-Trimethylpentane	7.505	337323	15.825 ng/ml
3) t n-Heptane	7.818	134863	4.116 ng/ml
4) t Benzene	7.958	144148	4.319 ng/ml
6) t Toluene	10.657	409023	13.905 ng/ml
7) t Ethylbenzene	13.077	113331	4.590 ng/ml
8) t m-Xylene	13.209	222963	9.417 ng/ml
9) t O-Xylene	13.934	197907	9.416 ng/ml
10) t 1,2,4-Trimethylbenzene	16.202	195393	9.854 ng/ml
-----			

(f)=RT Delta > 1/2 Window

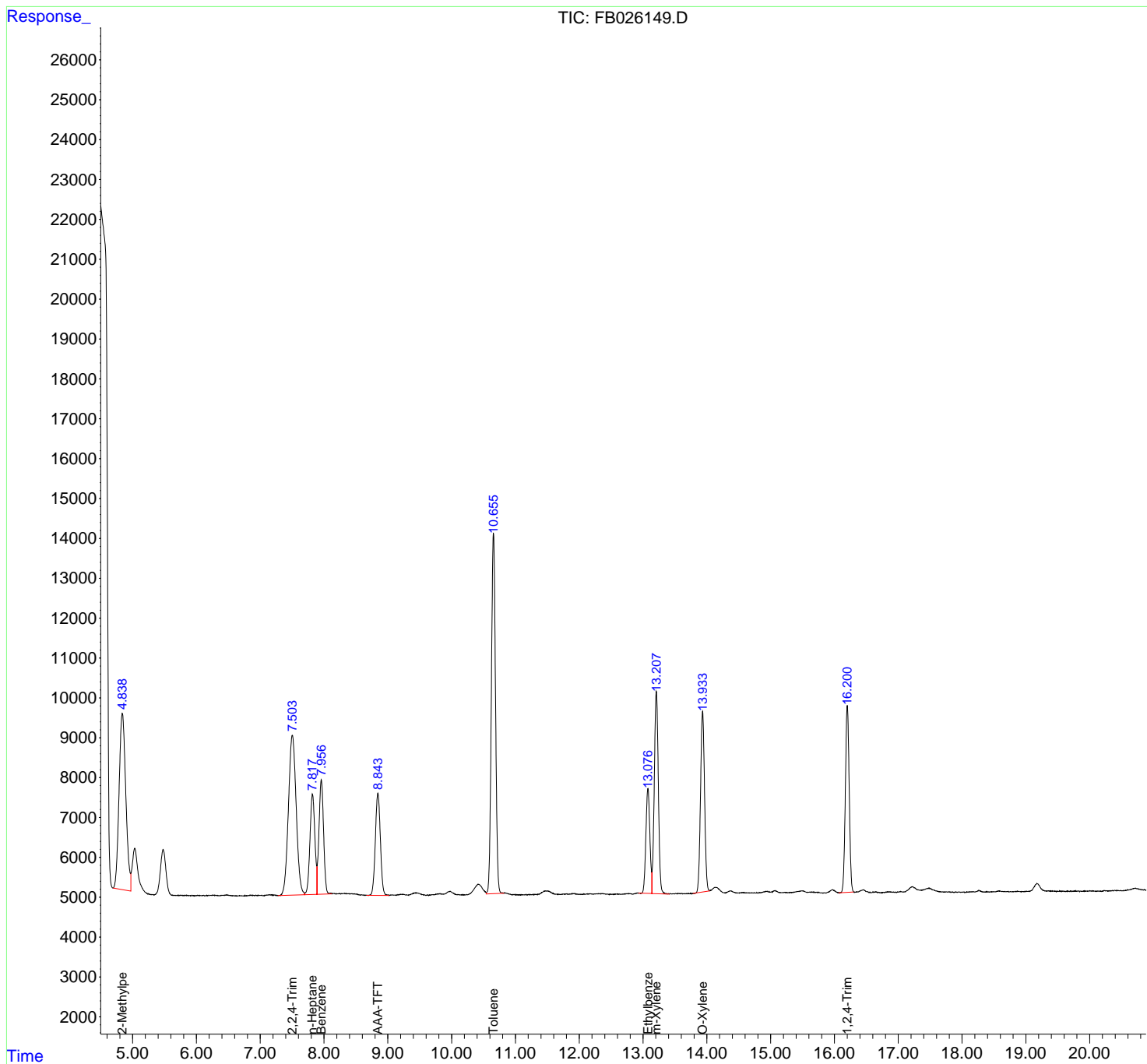
(m)=manual int.

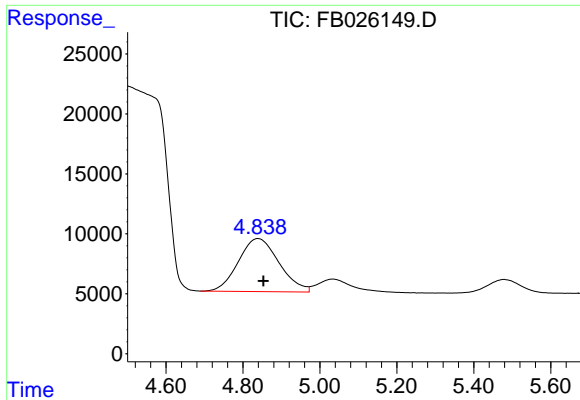
Data Path : Z:\pestpcbsrv\HPCHEM1\FID\_B\Data\FB081321\  
 Data File : FB026149.D  
 Signal(s) : FID2B.CH  
 Acq On : 13 Aug 2021 17:20  
 Operator : AJ/MA  
 Sample : 10 GRO STD  
 Misc :  
 ALS Vial : 3 Sample Multiplier: 1

Instrument :  
 FID\_B  
 ClientSampleId :

Integration File: Calibration.e  
 Quant Time: Aug 13 22:06:56 2021  
 Quant Method : Z:\pestpcbsrv\HPCHEM1\FID\_B\Method\FB081321.M  
 Quant Title :  
 QLast Update : Fri Aug 13 22:06:01 2021  
 Response via : Initial Calibration  
 Integrator: ChemStation

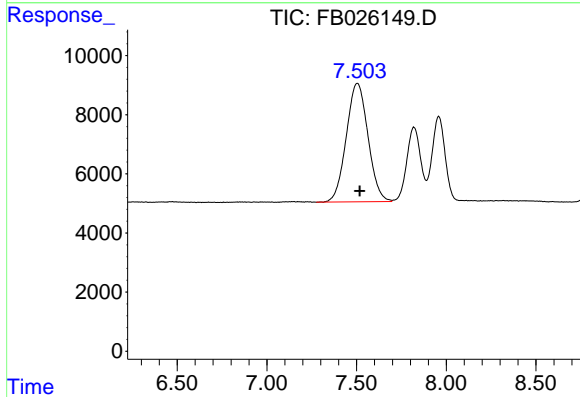
Volume Inj. : 5 g/ml  
 Signal Phase : RTX-502.2  
 Signal Info : 60mx0.53mmx3.00um



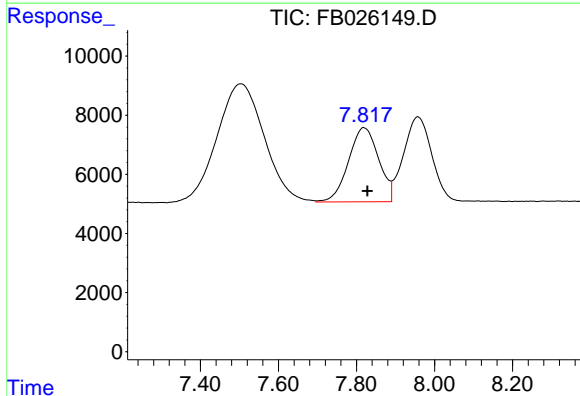


#1 2-Methylpentane  
 R.T.: 4.839 min  
 Delta R.T.: -0.014 min  
 Response: 323917  
 Conc: 14.79 ng/ml

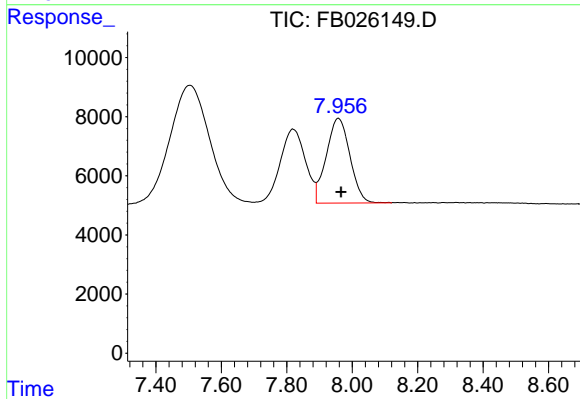
Instrument :  
 FID\_B  
 ClientSampled :



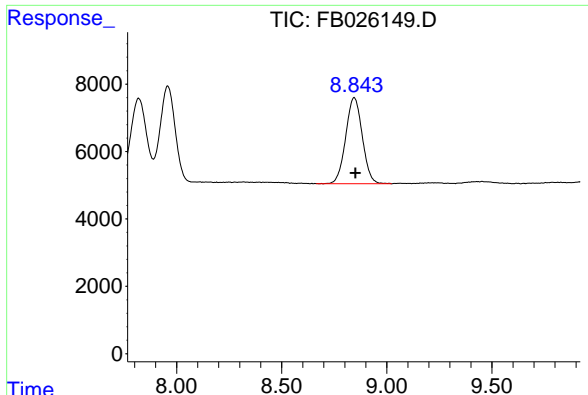
#2 2,2,4-Trimethylpentane  
 R.T.: 7.505 min  
 Delta R.T.: -0.012 min  
 Response: 337323  
 Conc: 15.82 ng/ml



#3 n-Heptane  
 R.T.: 7.818 min  
 Delta R.T.: -0.009 min  
 Response: 134863  
 Conc: 4.12 ng/ml



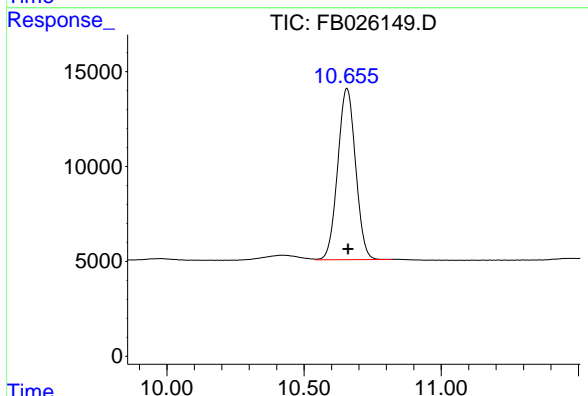
#4 Benzene  
 R.T.: 7.958 min  
 Delta R.T.: -0.008 min  
 Response: 144148  
 Conc: 4.32 ng/ml



#5 AAA-TFT

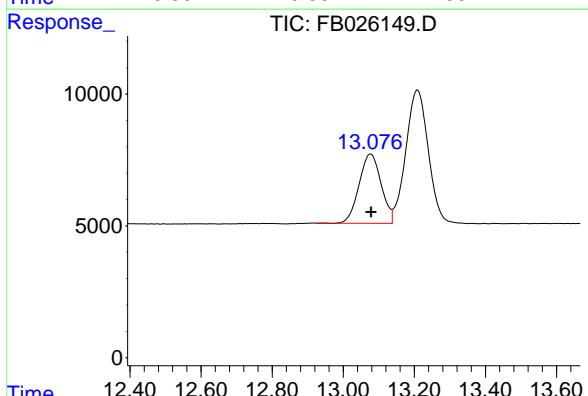
R.T.: 8.845 min  
 Delta R.T.: -0.006 min  
 Response: 140201  
 Conc: 9.23 ng/ml

Instrument :  
 FID\_B  
 ClientSampleId :



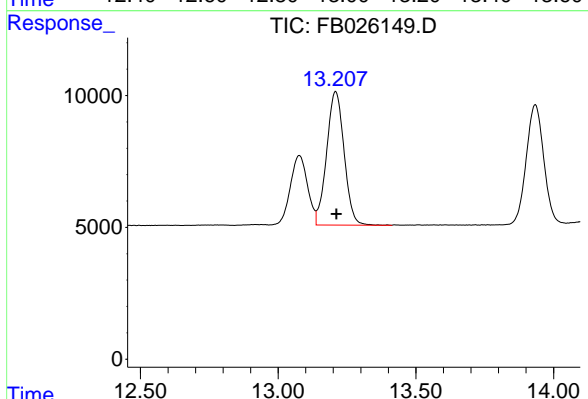
#6 Toluene

R.T.: 10.657 min  
 Delta R.T.: -0.004 min  
 Response: 409023  
 Conc: 13.91 ng/ml



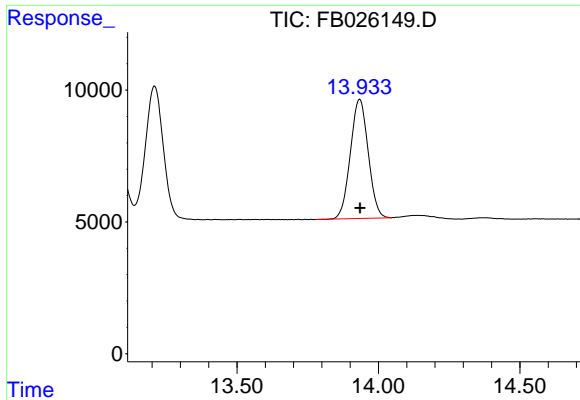
#7 Ethylbenzene

R.T.: 13.077 min  
 Delta R.T.: -0.002 min  
 Response: 113331  
 Conc: 4.59 ng/ml



#8 m-Xylene

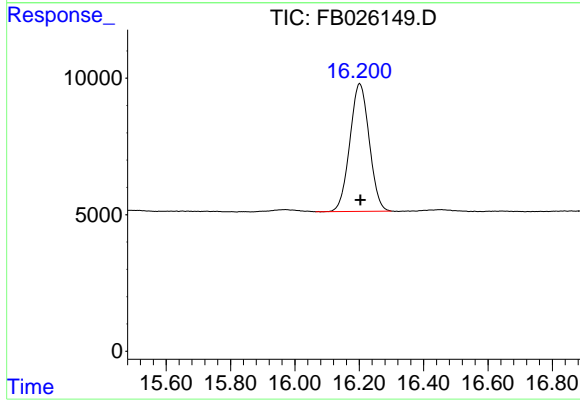
R.T.: 13.209 min  
 Delta R.T.: -0.002 min  
 Response: 222963  
 Conc: 9.42 ng/ml



#9 O-Xylene

R.T.: 13.934 min  
Delta R.T.: -0.001 min  
Response: 197907  
Conc: 9.42 ng/ml

Instrument :  
FID\_B  
ClientSampled :



#10 1,2,4-Trimethylbenzene

R.T.: 16.202 min  
Delta R.T.: -0.001 min  
Response: 195393  
Conc: 9.85 ng/ml