

Data Path : Z:\pestpcbsrv\HPCHEM1\FID_B\Data\FB082019\
 Data File : FB022050.D
 Signal(s) : FID2B.CH
 Acq On : 21 Aug 2019 8:30
 Operator : DD/AJ
 Sample : FB082019GROICV
 Misc :
 ALS Vial : 6 Sample Multiplier: 1

Instrument :
 FID_B
 ClientSampleId :
 FB082019GROICV

Integration File: Calibration.e
 Quant Time: Aug 21 08:59:48 2019
 Quant Method : Z:\pestpcbsrv\HPCHEM1\FID_B\Method\FB082019.M
 Quant Title :
 QLast Update : Wed Aug 21 07:59:08 2019
 Response via : Initial Calibration
 Integrator: ChemStation

Volume Inj. : 5 g/ml
 Signal Phase : RTX-502.2
 Signal Info : 60mx0.53mmx3.00um

Compound	R.T.	Response	Conc Units

System Monitoring Compounds			
5) s AAA-TFT	8.981	461331	21.720 ng/ml
Target Compounds			
1) t 2-Methylpentane	4.850	1228452	30.694 ng/ml
2) t 2,2,4-Trimethylpentane	7.600	1197757	29.737 ng/ml
3) t n-Heptane	7.939	390697	10.228 ng/ml
4) t Benzene	8.074	461178	10.273 ng/ml
6) t Toluene	10.822	931003	30.284 ng/ml
7) t Ethylbenzene	13.268	209804	10.281 ng/ml
8) t m-Xylene	13.401	439363	20.862 ng/ml
9) t O-Xylene	14.130	467046	20.883 ng/ml
10) t 1,2,4-Trimethylbenzene	16.410	526272	20.521 ng/ml

(f)=RT Delta > 1/2 Window

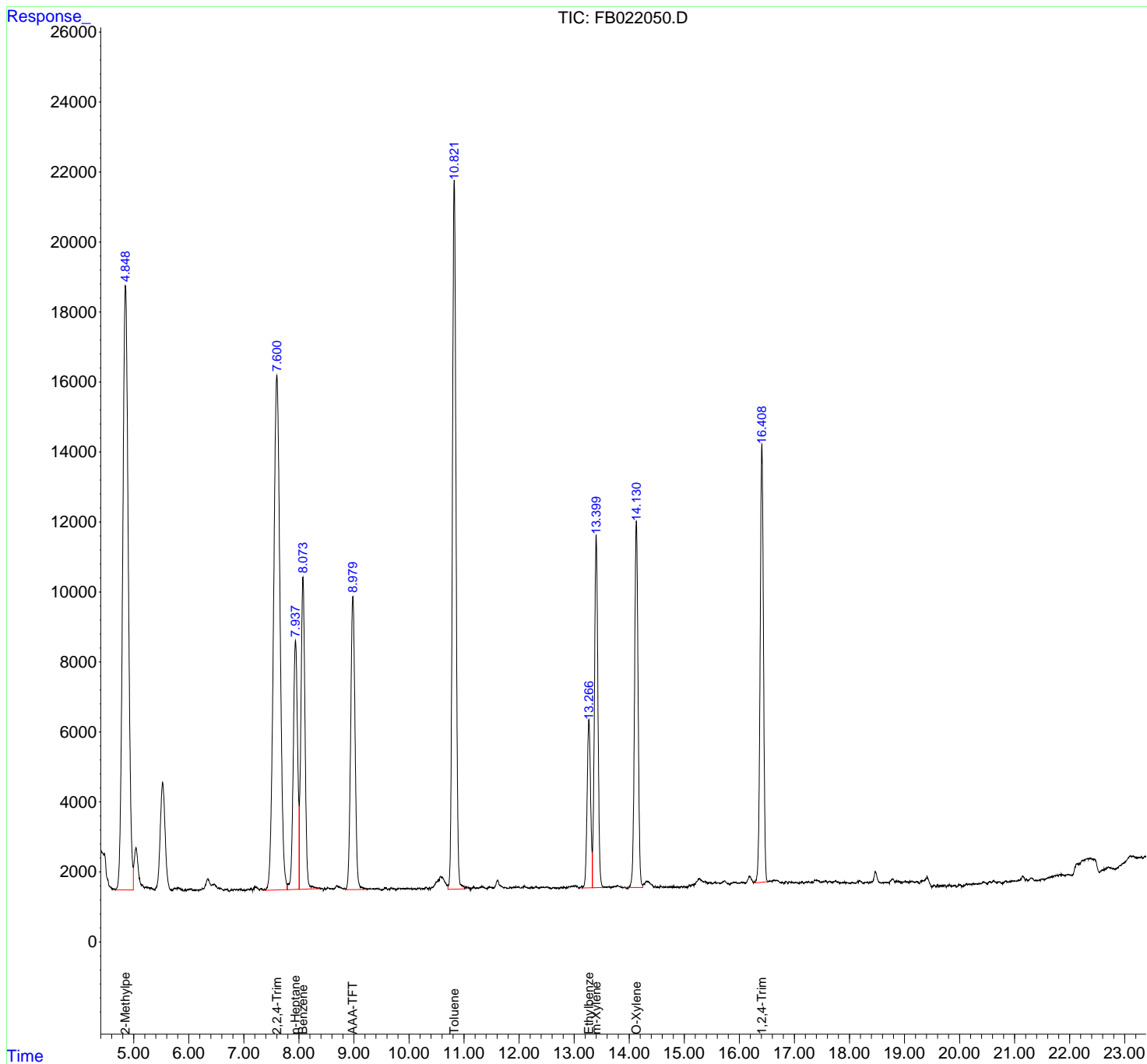
(m)=manual int.

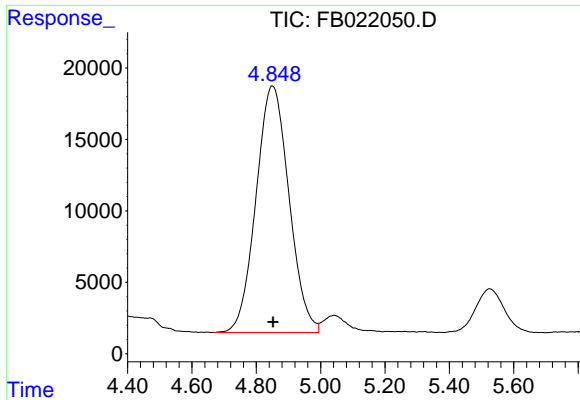
Data Path : Z:\pestpcbsrv\HPCHEM1\FID_B\Data\FB082019\
 Data File : FB022050.D
 Signal(s) : FID2B.CH
 Acq On : 21 Aug 2019 8:30
 Operator : DD/AJ
 Sample : FB082019GROICV
 Misc :
 ALS Vial : 6 Sample Multiplier: 1

Instrument :
 FID_B
 ClientSampleID :
 FB082019GROICV

Integration File: Calibration.e
 Quant Time: Aug 21 08:59:48 2019
 Quant Method : Z:\pestpcbsrv\HPCHEM1\FID_B\Method\FB082019.M
 Quant Title :
 QLast Update : Wed Aug 21 07:59:08 2019
 Response via : Initial Calibration
 Integrator: ChemStation

Volume Inj. : 5 g/ml
 Signal Phase : RTX-502.2
 Signal Info : 60mx0.53mmx3.00um

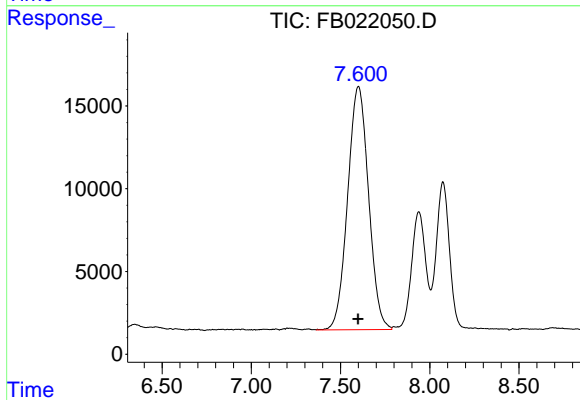




#1 2-Methylpentane

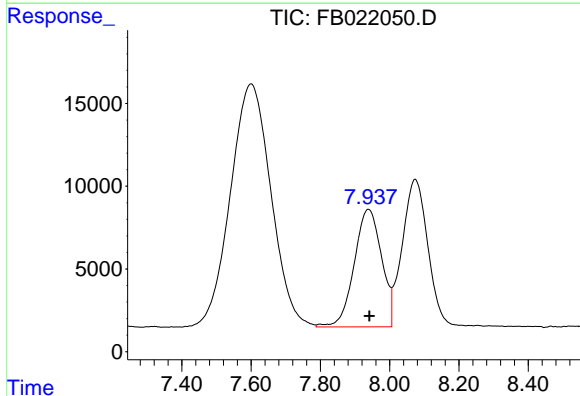
R.T.: 4.850 min
 Delta R.T.: -0.002 min
 Response: 1228452
 Conc: 30.69 ng/ml

Instrument :
 FID_B
 ClientSampleId :
 FB082019GROICV



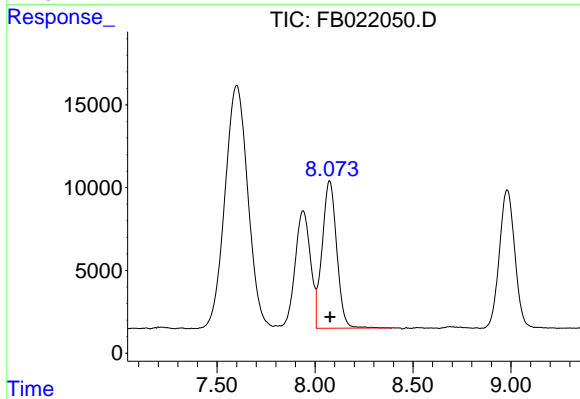
#2 2,2,4-Trimethylpentane

R.T.: 7.600 min
 Delta R.T.: 0.000 min
 Response: 1197757
 Conc: 29.74 ng/ml



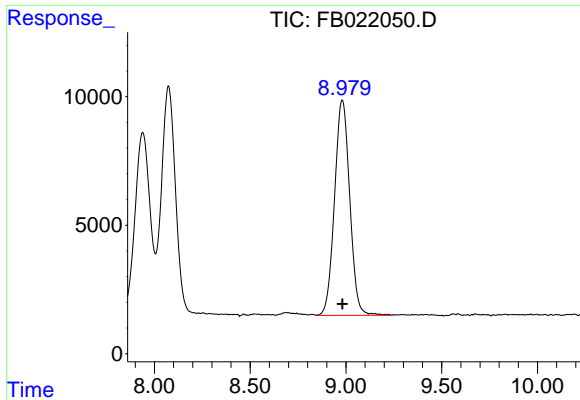
#3 n-Heptane

R.T.: 7.939 min
 Delta R.T.: -0.002 min
 Response: 390697
 Conc: 10.23 ng/ml



#4 Benzene

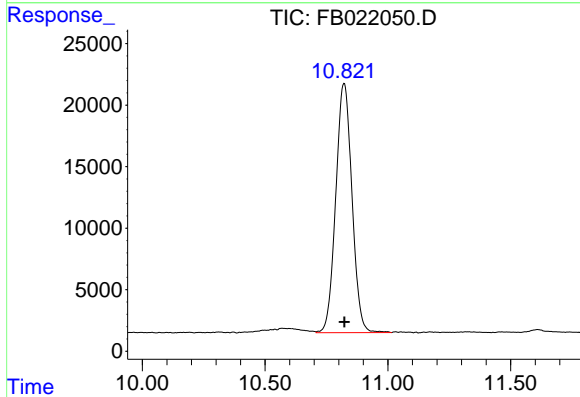
R.T.: 8.074 min
 Delta R.T.: -0.002 min
 Response: 461178
 Conc: 10.27 ng/ml



#5 AAA-TFT

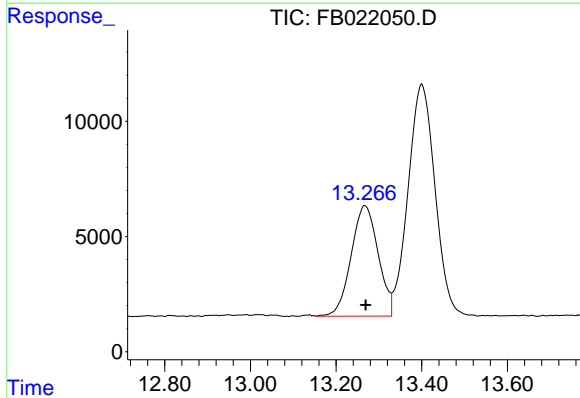
R.T.: 8.981 min
 Delta R.T.: -0.001 min
 Response: 461331
 Conc: 21.72 ng/ml

Instrument :
 FID_B
 ClientSampleId :
 FB082019GROICV



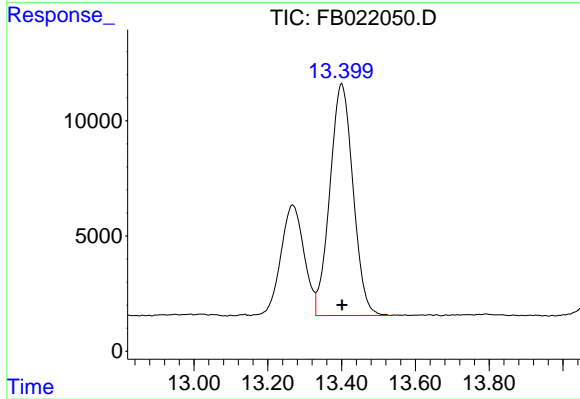
#6 Toluene

R.T.: 10.822 min
 Delta R.T.: 0.000 min
 Response: 931003
 Conc: 30.28 ng/ml



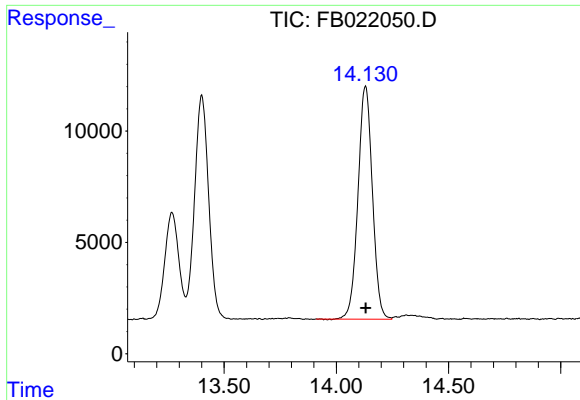
#7 Ethylbenzene

R.T.: 13.268 min
 Delta R.T.: -0.002 min
 Response: 209804
 Conc: 10.28 ng/ml



#8 m-Xylene

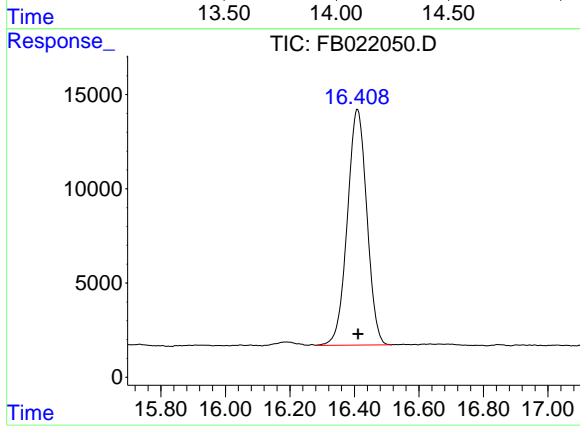
R.T.: 13.401 min
 Delta R.T.: 0.000 min
 Response: 439363
 Conc: 20.86 ng/ml



#9 O-Xylene

R.T.: 14.130 min
 Delta R.T.: -0.002 min
 Response: 467046
 Conc: 20.88 ng/ml

Instrument :
 FID_B
 ClientSampleId :
 FB082019GROICV



#10 1,2,4-Trimethylbenzene

R.T.: 16.410 min
 Delta R.T.: -0.002 min
 Response: 526272
 Conc: 20.52 ng/ml