

Data Path : Z:\pestpcbsrv\HPCHEM1\FID_B\Data\FB082119\
 Data File : FB022064.D
 Signal(s) : FID2B.CH
 Acq On : 21 Aug 2019 16:50
 Operator : DD/AJ
 Sample : K4421-05
 Misc : 4.98/5.00ml DI WATER
 ALS Vial : 14 Sample Multiplier: 1

Integration File: Calibration.e
 Quant Time: Aug 22 01:28:17 2019
 Quant Method : Z:\pestpcbsrv\HPCHEM1\FID_B\Method\FB082019.M
 Quant Title :
 QLast Update : Wed Aug 21 07:59:08 2019
 Response via : Initial Calibration
 Integrator: ChemStation

Volume Inj. : 5 g/ml
 Signal Phase : RTX-502.2
 Signal Info : 60mx0.53mmx3.00um

Compound	R.T.	Response	Conc Units

System Monitoring Compounds			
5) s AAA-TFT	8.990	333648	15.708 ng/ml
Target Compounds			
7) t Ethylbenzene	13.262	4868	0.239 ng/ml
8) t m-Xylene	13.415	2155	0.102 ng/ml
9) t O-Xylene	14.079	5977	0.267 ng/ml
10) t 1,2,4-Trimethylbenzene	16.436	2809	0.110 ng/ml

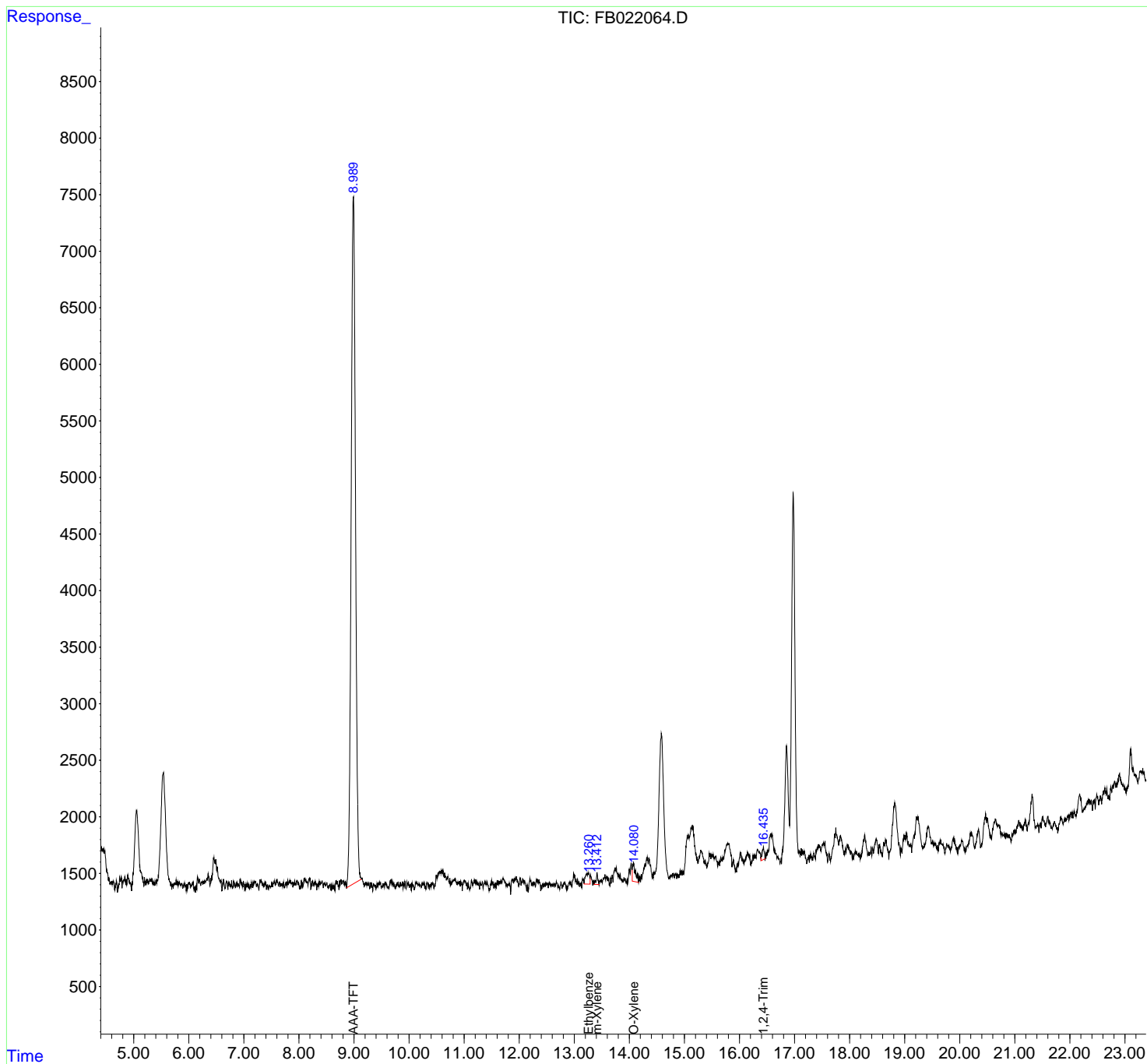
(f)=RT Delta > 1/2 Window

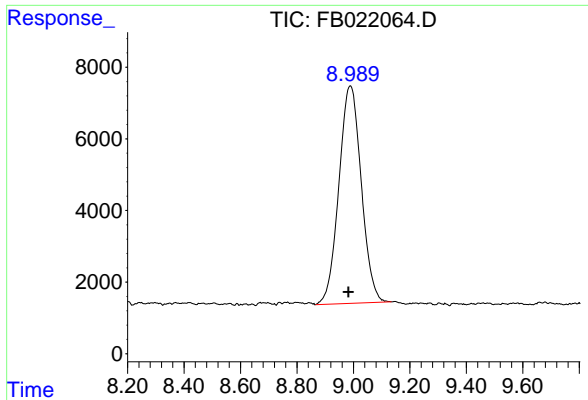
(m)=manual int.

Data Path : Z:\pestpcbsrv\HPCHEM1\FID_B\Data\FB082119\
 Data File : FB022064.D
 Signal(s) : FID2B.CH
 Acq On : 21 Aug 2019 16:50
 Operator : DD/AJ
 Sample : K4421-05
 Misc : 4.98/5.00ml DI WATER
 ALS Vial : 14 Sample Multiplier: 1

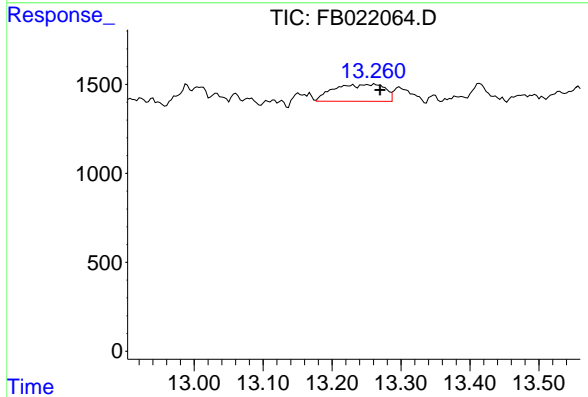
Integration File: Calibration.e
 Quant Time: Aug 22 01:28:17 2019
 Quant Method : Z:\pestpcbsrv\HPCHEM1\FID_B\Method\FB082019.M
 Quant Title :
 QLast Update : Wed Aug 21 07:59:08 2019
 Response via : Initial Calibration
 Integrator: ChemStation

Volume Inj. : 5 g/ml
 Signal Phase : RTX-502.2
 Signal Info : 60mx0.53mmx3.00um

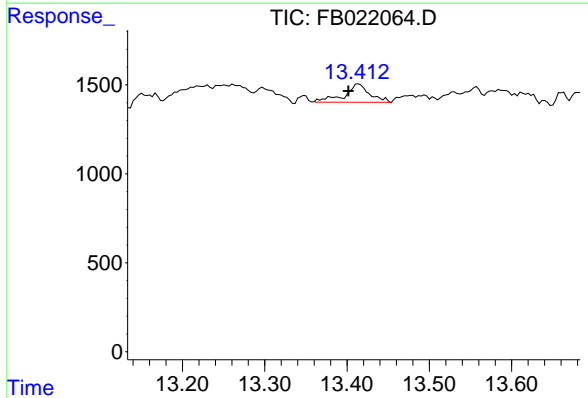




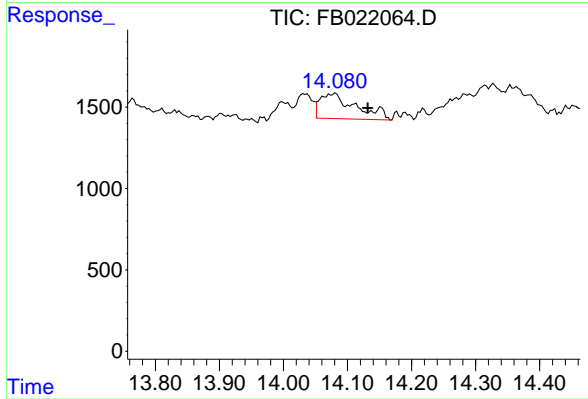
#5 AAA-TFT
 R.T.: 8.990 min
 Delta R.T.: 0.008 min
 Response: 333648
 Conc: 15.71 ng/ml



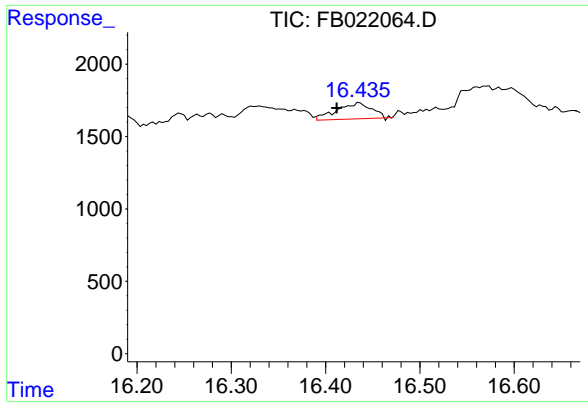
#7 Ethylbenzene
 R.T.: 13.262 min
 Delta R.T.: -0.007 min
 Response: 4868
 Conc: 0.24 ng/ml



#8 m-Xylene
 R.T.: 13.415 min
 Delta R.T.: 0.013 min
 Response: 2155
 Conc: 0.10 ng/ml



#9 O-Xylene
 R.T.: 14.079 min
 Delta R.T.: -0.053 min
 Response: 5977
 Conc: 0.27 ng/ml



#10 1,2,4-Trimethylbenzene

R.T.: 16.436 min
Delta R.T.: 0.024 min
Response: 2809
Conc: 0.11 ng/ml