

Data Path : Z:\pestpcbsrv\HPCHEM1\FID_B\Data\FB082119\
Data File : FB022068.D
Signal(s) : FID2B.CH
Acq On : 21 Aug 2019 18:55
Operator : DD/AJ
Sample : K4421-13
Misc : 4.99/5.00ml DI WATER
ALS Vial : 18 Sample Multiplier: 1

Integration File: Calibration.e
Quant Time: Aug 22 01:29:01 2019
Quant Method : Z:\pestpcbsrv\HPCHEM1\FID_B\Method\FB082019.M
Quant Title :
QLast Update : Wed Aug 21 07:59:08 2019
Response via : Initial Calibration
Integrator: ChemStation

Volume Inj. : 5 g/ml
Signal Phase : RTX-502.2
Signal Info : 60mx0.53mmx3.00um

Compound	R.T.	Response	Conc Units

System Monitoring Compounds			
5) s AAA-TFT	8.993	270138	12.718 ng/ml
Target Compounds			
2) t 2,2,4-Trimethylpentane	7.555	4082	0.101 ng/ml
4) t Benzene	8.085	5563	0.124 ng/ml
6) t Toluene	10.825	5105	0.166 ng/ml

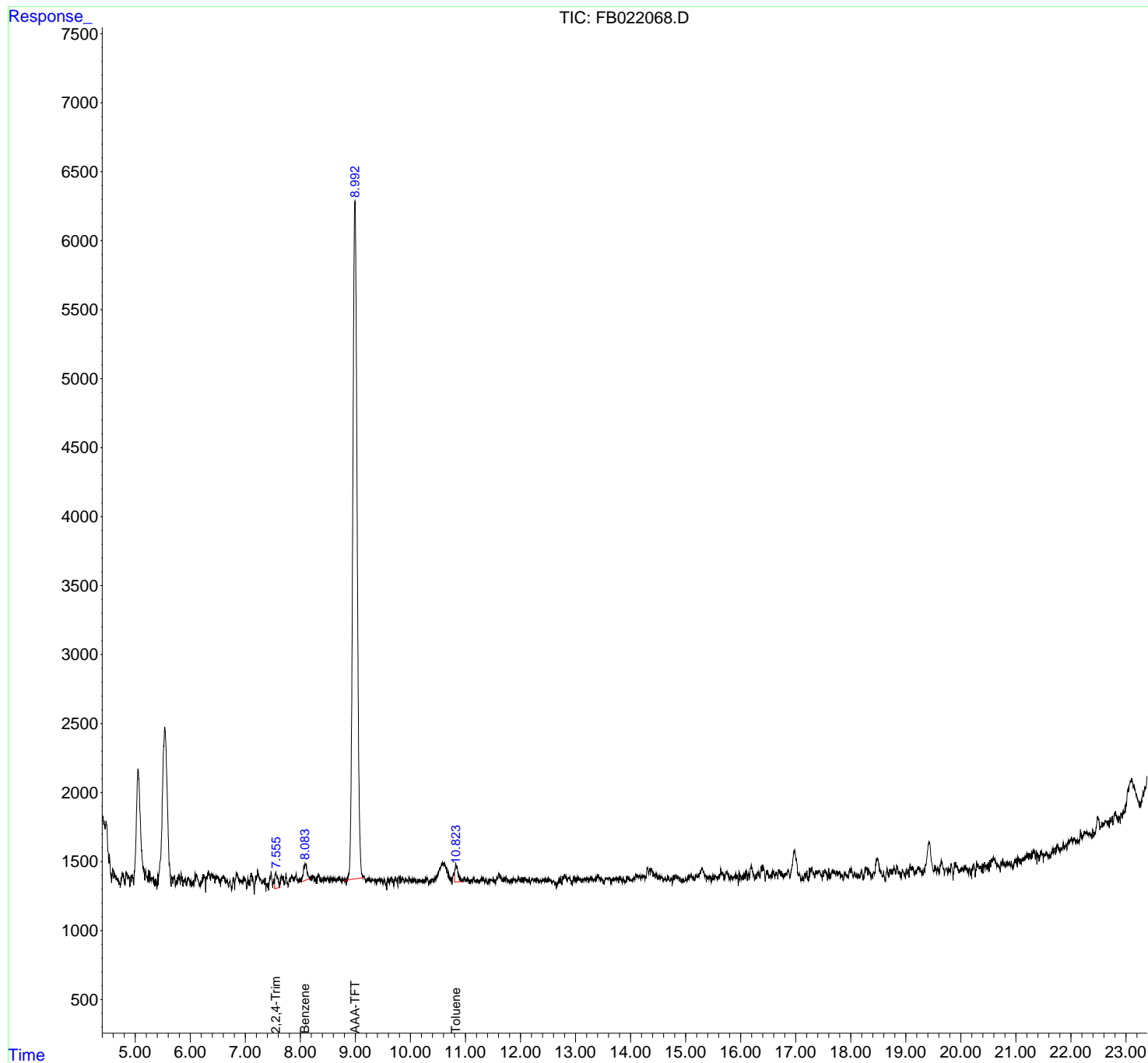
(f)=RT Delta > 1/2 Window

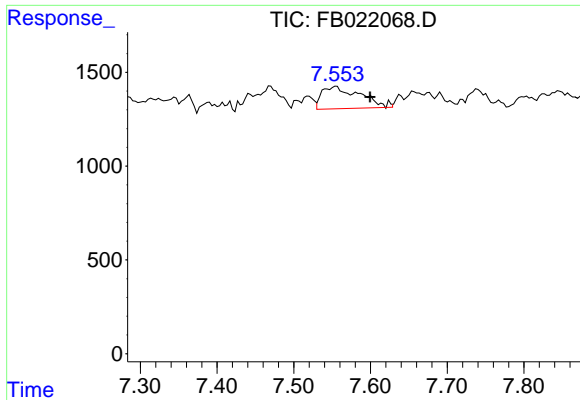
(m)=manual int.

Data Path : Z:\pestpcbsrv\HPCHEM1\FID_B\Data\FB082119\
 Data File : FB022068.D
 Signal(s) : FID2B.CH
 Acq On : 21 Aug 2019 18:55
 Operator : DD/AJ
 Sample : K4421-13
 Misc : 4.99/5.00ml DI WATER
 ALS Vial : 18 Sample Multiplier: 1

Integration File: Calibration.e
 Quant Time: Aug 22 01:29:01 2019
 Quant Method : Z:\pestpcbsrv\HPCHEM1\FID_B\Method\FB082019.M
 Quant Title :
 QLast Update : Wed Aug 21 07:59:08 2019
 Response via : Initial Calibration
 Integrator: ChemStation

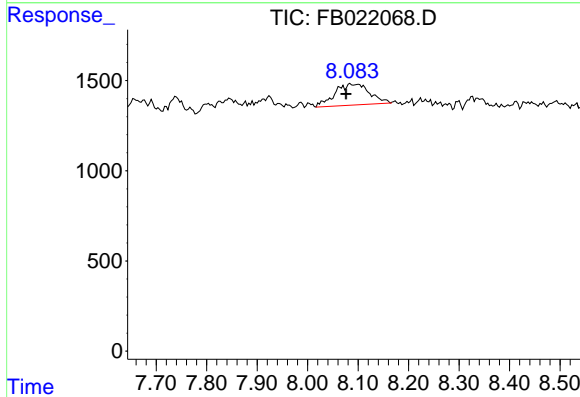
Volume Inj. : 5 g/ml
 Signal Phase : RTX-502.2
 Signal Info : 60mx0.53mmx3.00um





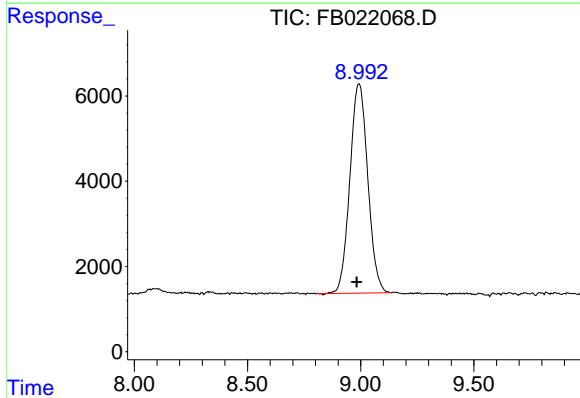
#2 2,2,4-Trimethylpentane

R.T.: 7.555 min
 Delta R.T.: -0.044 min
 Response: 4082
 Conc: 0.10 ng/ml



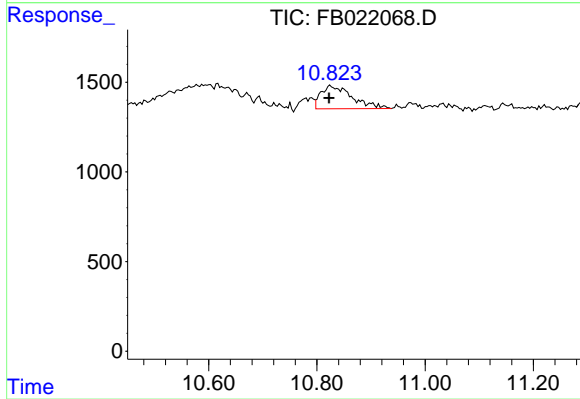
#4 Benzene

R.T.: 8.085 min
 Delta R.T.: 0.009 min
 Response: 5563
 Conc: 0.12 ng/ml



#5 AAA-TFT

R.T.: 8.993 min
 Delta R.T.: 0.011 min
 Response: 270138
 Conc: 12.72 ng/ml



#6 Toluene

R.T.: 10.825 min
 Delta R.T.: 0.002 min
 Response: 5105
 Conc: 0.17 ng/ml