

Data Path : Z:\pestpcbsrv\HPCHEM1\FID_B\Data\FB082123\
 Data File : FB030284.D
 Signal(s) : FID2B.CH
 Acq On : 21 Aug 2023 20:09
 Operator : YP/AJ
 Sample : 20 PPB GRO STD
 Misc : 5.06G/5.00 ML DI WATER
 ALS Vial : 19 Sample Multiplier: 1

Instrument :
 FID_B
ClientSampleId :
 20 PPB GRO STD

Manual Integrations
APPROVED

Reviewed By :Yogesh Patel 08/22/2023
 Supervised By :Ankita Jodhani 08/22/2023

Integration File: Calibration.e
 Quant Time: Aug 22 01:09:34 2023
 Quant Method : Z:\pestpcbsrv\HPCHEM1\FID_B\Method\FB072423.M
 Quant Title :
 QLast Update : Tue Jul 25 06:41:02 2023
 Response via : Initial Calibration
 Integrator: ChemStation

Volume Inj. : 5 g/ml
 Signal Phase : RTX-502.2
 Signal Info : 60mx0.53mmx3.00um

Compound	R.T.	Response	Conc Units

System Monitoring Compounds			
5) s AAA-TFT	8.796	222076	18.068 ng/ml
Target Compounds			
1) t 2-Methylpentane	4.717	344396	20.848 ng/ml
2) t 2,2,4-Trimethylpentane	7.425	460786	24.832 ng/ml
3) t n-Heptane	7.753	129567	6.735 ng/ml
4) t Benzene	7.892	198716	8.447 ng/ml
6) t Toluene	10.624	611463	26.681 ng/ml
7) t Ethylbenzene	13.057	191951	8.943 ng/mlm
8) t m-Xylene	13.192	378407	17.993 ng/ml
9) t O-Xylene	13.919	371790	18.115 ng/ml
10) t 1,2,4-Trimethylbenzene	16.193	351040	17.935 ng/ml

(f)=RT Delta > 1/2 Window

(m)=manual int.

Data Path : Z:\pestpcbsrv\HPCHEM1\FID_B\Data\FB082123\
 Data File : FB030284.D
 Signal(s) : FID2B.CH
 Acq On : 21 Aug 2023 20:09
 Operator : YP/AJ
 Sample : 20 PPB GRO STD
 Misc : 5.06G/5.00 ML DI WATER
 ALS Vial : 19 Sample Multiplier: 1

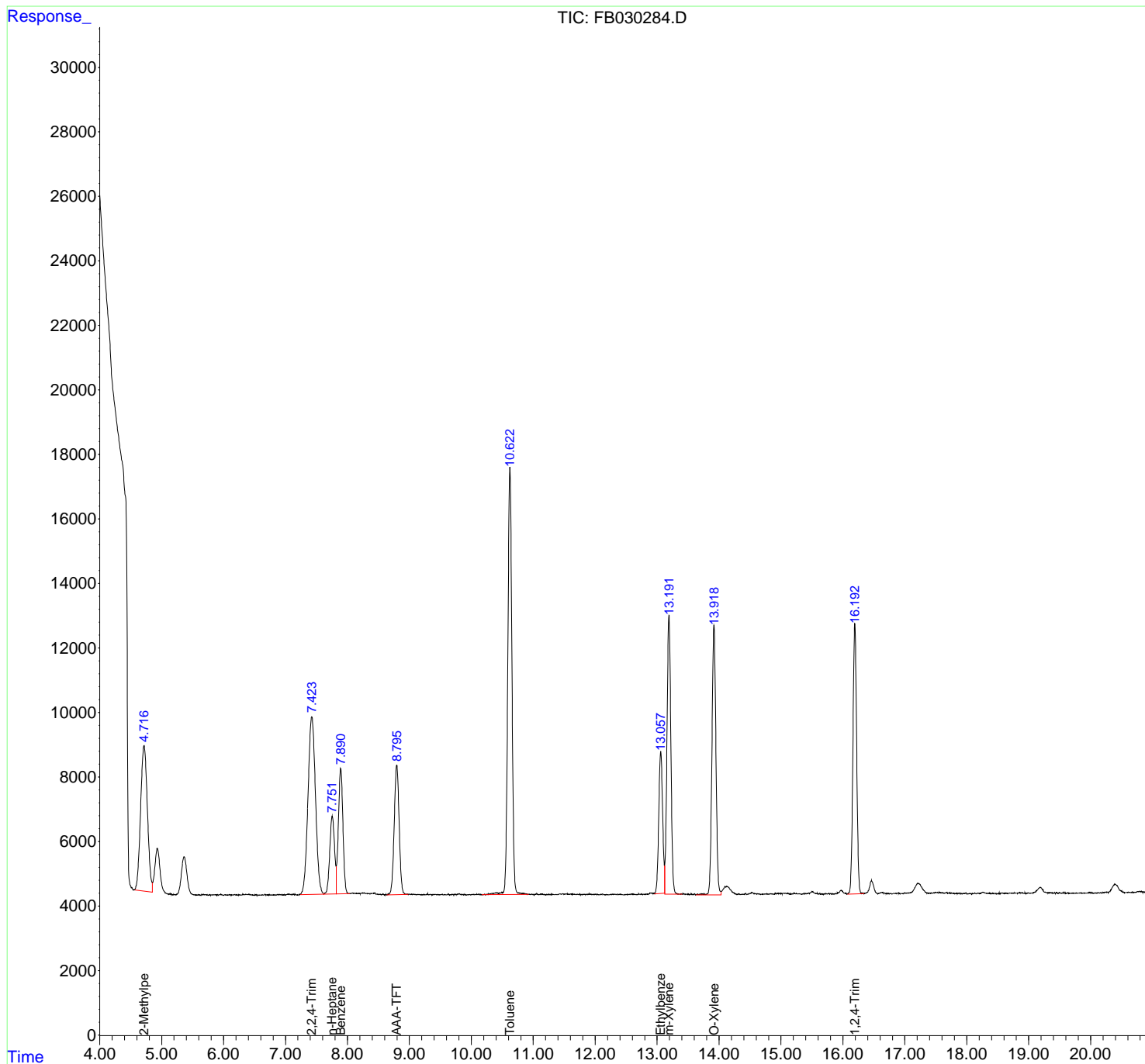
Instrument :
 FID_B
ClientSampleId :
 20 PPB GRO STD

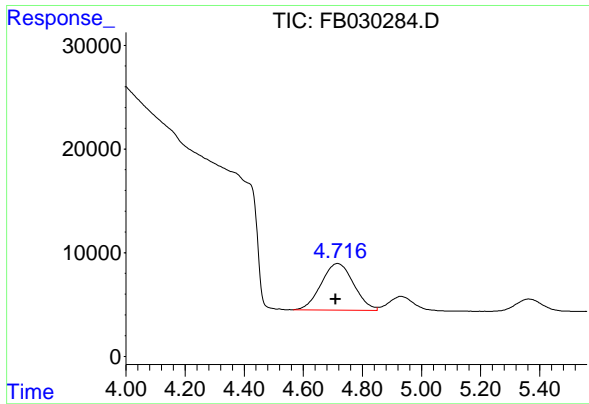
Manual Integrations
APPROVED

Reviewed By :Yogesh Patel 08/22/2023
 Supervised By :Ankita Jodhani 08/22/2023

Integration File: Calibration.e
 Quant Time: Aug 22 01:09:34 2023
 Quant Method : Z:\pestpcbsrv\HPCHEM1\FID_B\Method\FB072423.M
 Quant Title :
 QLast Update : Tue Jul 25 06:41:02 2023
 Response via : Initial Calibration
 Integrator: ChemStation

Volume Inj. : 5 g/ml
 Signal Phase : RTX-502.2
 Signal Info : 60mx0.53mmx3.00um





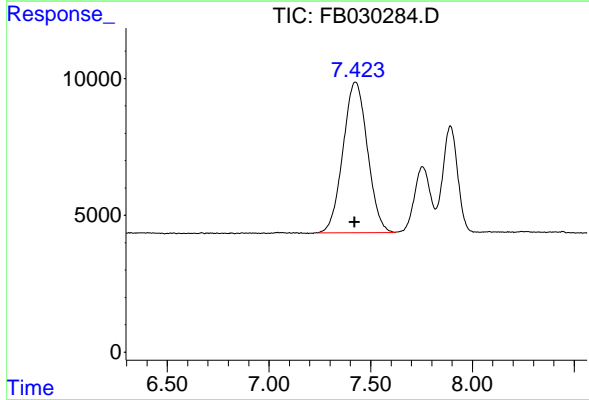
#1 2-Methylpentane

R.T.: 4.717 min
 Delta R.T.: 0.007 min
 Response: 344396
 Conc: 20.85 ng/ml

Instrument : FID_B
 Client Sample Id : 20 PPB GRO STD

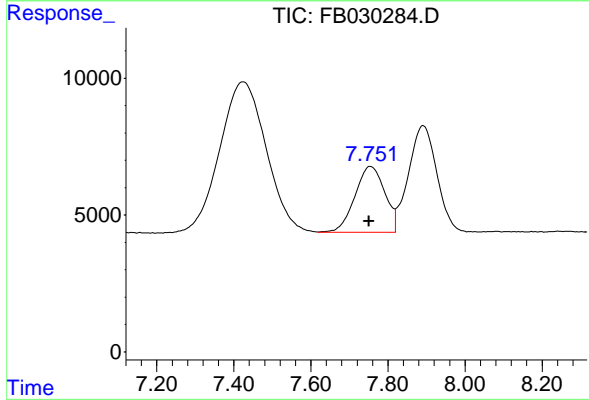
Manual Integrations
 APPROVED

Reviewed By :Yogesh Patel 08/22/2023
 Supervised By :Ankita Jodhani 08/22/2023



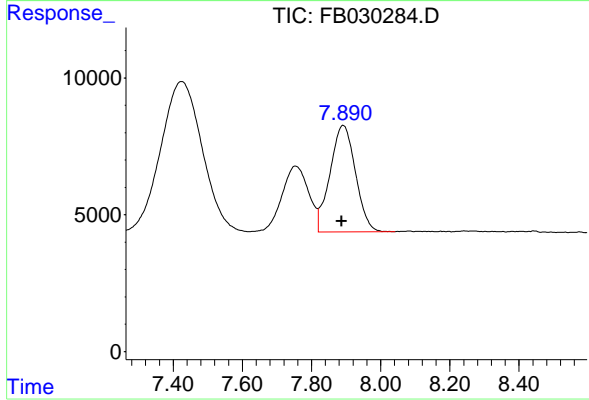
#2 2,2,4-Trimethylpentane

R.T.: 7.425 min
 Delta R.T.: 0.004 min
 Response: 460786
 Conc: 24.83 ng/ml



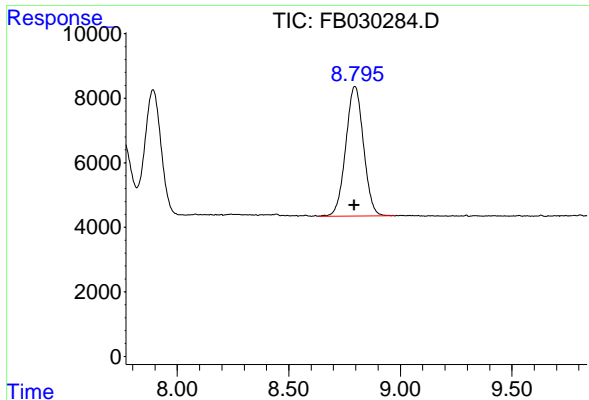
#3 n-Heptane

R.T.: 7.753 min
 Delta R.T.: 0.003 min
 Response: 129567
 Conc: 6.73 ng/ml



#4 Benzene

R.T.: 7.892 min
 Delta R.T.: 0.005 min
 Response: 198716
 Conc: 8.45 ng/ml



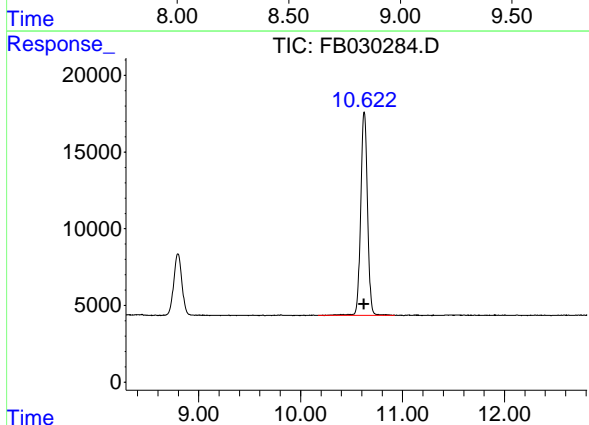
#5 AAA-TFT

R.T.: 8.796 min
 Delta R.T.: 0.003 min
 Response: 222076
 Conc: 18.07 ng/ml

Instrument : FID_B
 ClientSampleId : 20 PPB GRO STD

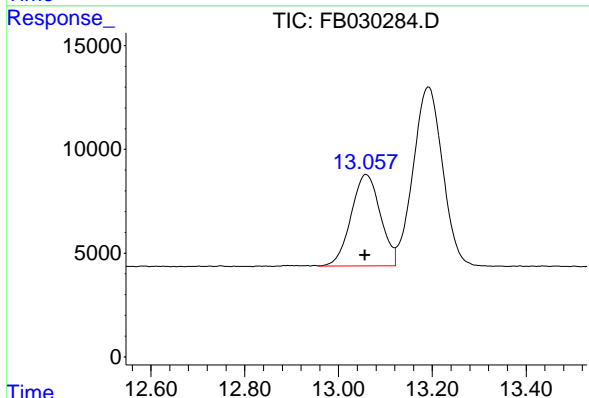
Manual Integrations
 APPROVED

Reviewed By :Yogesh Patel 08/22/2023
 Supervised By :Ankita Jodhani 08/22/2023



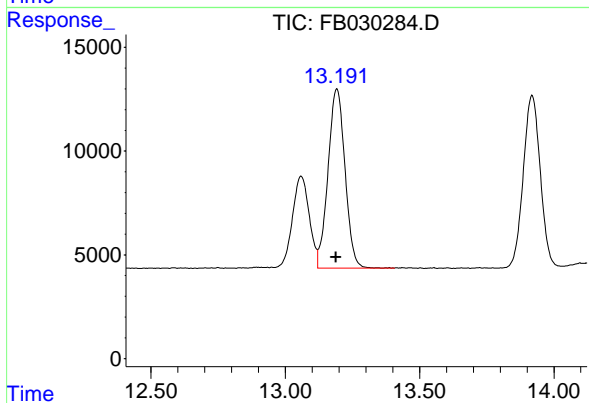
#6 Toluene

R.T.: 10.624 min
 Delta R.T.: 0.003 min
 Response: 611463
 Conc: 26.68 ng/ml



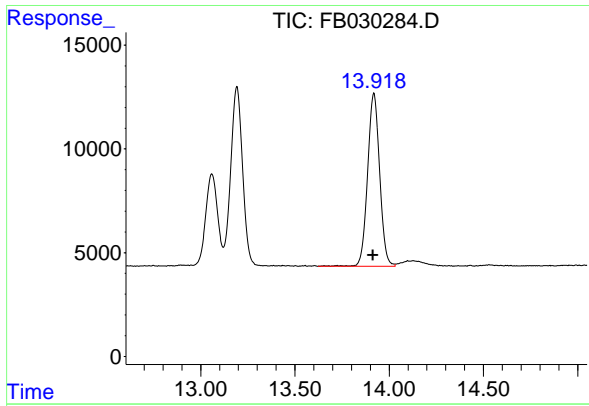
#7 Ethylbenzene

R.T.: 13.057 min
 Delta R.T.: 0.000 min
 Response: 191951
 Conc: 8.94 ng/ml m



#8 m-Xylene

R.T.: 13.192 min
 Delta R.T.: 0.003 min
 Response: 378407
 Conc: 17.99 ng/ml



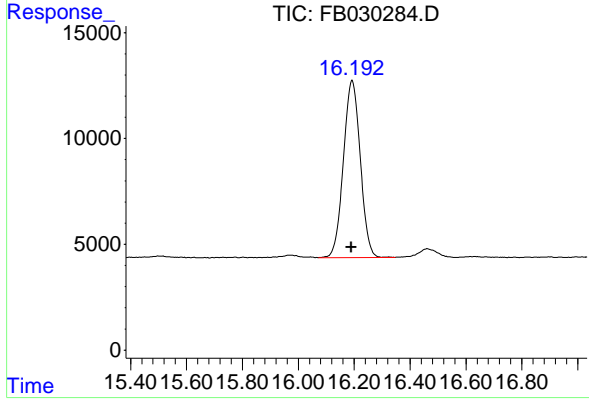
#9 O-Xylene

R.T.: 13.919 min
 Delta R.T.: 0.003 min
 Response: 371790
 Conc: 18.12 ng/ml

Instrument : FID_B
 ClientSampleId : 20 PPB GRO STD

Manual Integrations
 APPROVED

Reviewed By :Yogesh Patel 08/22/2023
 Supervised By :Ankita Jodhani 08/22/2023



#10 1,2,4-Trimethylbenzene

R.T.: 16.193 min
 Delta R.T.: 0.003 min
 Response: 351040
 Conc: 17.93 ng/ml