

Data Path : Z:\pestpcbsrv\HPCHEM1\FID_B\Data\FB082419\
Data File : FB022169.D
Signal(s) : FID2B.CH
Acq On : 24 Aug 2019 17:30
Operator : DD/AJ
Sample : K4510-12
Misc : 5.00/5.00ml DI WATER
ALS Vial : 17 Sample Multiplier: 1

Instrument :
FID_B
ClientSampleId :
SB-13-COMP

Integration File: Calibration.e
Quant Time: Aug 26 00:51:09 2019
Quant Method : Z:\pestpcbsrv\HPCHEM1\FID_B\Method\FB082019.M
Quant Title :
QLast Update : Wed Aug 21 07:59:08 2019
Response via : Initial Calibration
Integrator: ChemStation

Volume Inj. : 5 g/ml
Signal Phase : RTX-502.2
Signal Info : 60mx0.53mmx3.00um

Compound	R.T.	Response	Conc Units

System Monitoring Compounds			
5) s AAA-TFT	8.982	346205	16.300 ng/ml

Target Compounds

(f)=RT Delta > 1/2 Window

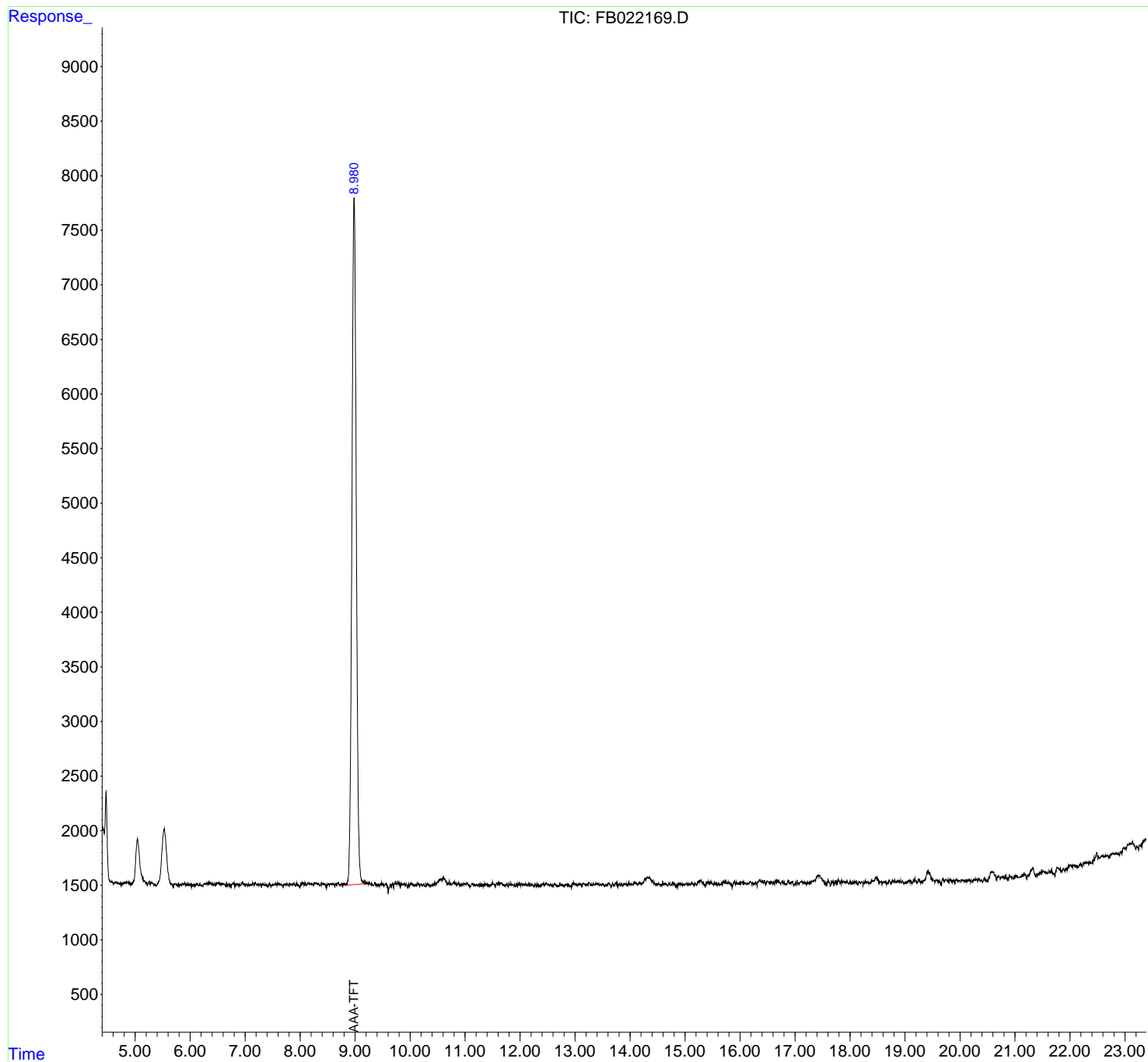
(m)=manual int.

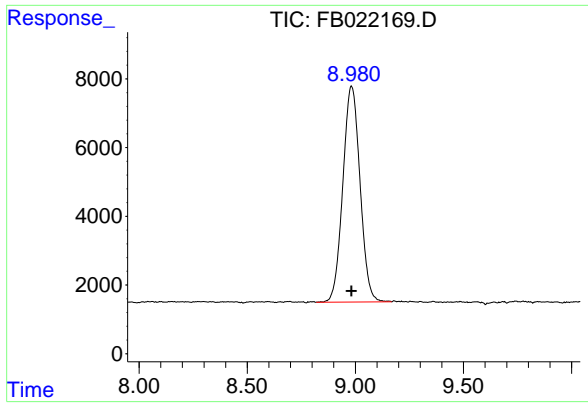
Data Path : Z:\pestpcbsrv\HPCHEM1\FID_B\Data\FB082419\
Data File : FB022169.D
Signal(s) : FID2B.CH
Acq On : 24 Aug 2019 17:30
Operator : DD/AJ
Sample : K4510-12
Misc : 5.00/5.00ml DI WATER
ALS Vial : 17 Sample Multiplier: 1

Instrument :
FID_B
ClientSampled :
SB-13-COMP

Integration File: Calibration.e
Quant Time: Aug 26 00:51:09 2019
Quant Method : Z:\pestpcbsrv\HPCHEM1\FID_B\Method\FB082019.M
Quant Title :
QLast Update : Wed Aug 21 07:59:08 2019
Response via : Initial Calibration
Integrator: ChemStation

Volume Inj. : 5 g/ml
Signal Phase : RTX-502.2
Signal Info : 60mx0.53mmx3.00um





#5 AAA-TFT

R.T.: 8.982 min
Delta R.T.: 0.000 min
Response: 346205
Conc: 16.30 ng/ml

Instrument :
FID_B
ClientSampled :
SB-13-COMP