

Data Path : Z:\pestpcbsrv\HPCHEM1\FID_B\Data\FB082819\
Data File : FB022228.D
Signal(s) : FID2B.CH
Acq On : 28 Aug 2019 12:04
Operator : DD/AJ
Sample : K4568-04
Misc : 5.00/5.00ml DI WATER
ALS Vial : 9 Sample Multiplier: 1

Instrument :
FID_B
ClientSampleId :
SB-15-COMP

Integration File: Calibration.e
Quant Time: Aug 28 23:20:46 2019
Quant Method : Z:\pestpcbsrv\HPCHEM1\FID_B\Method\FB082019.M
Quant Title :
QLast Update : Wed Aug 21 07:59:08 2019
Response via : Initial Calibration
Integrator: ChemStation

Volume Inj. : 5 g/ml
Signal Phase : RTX-502.2
Signal Info : 60mx0.53mmx3.00um

Compound	R.T.	Response	Conc Units
----------	------	----------	------------

System Monitoring Compounds

Target Compounds

(f)=RT Delta > 1/2 Window

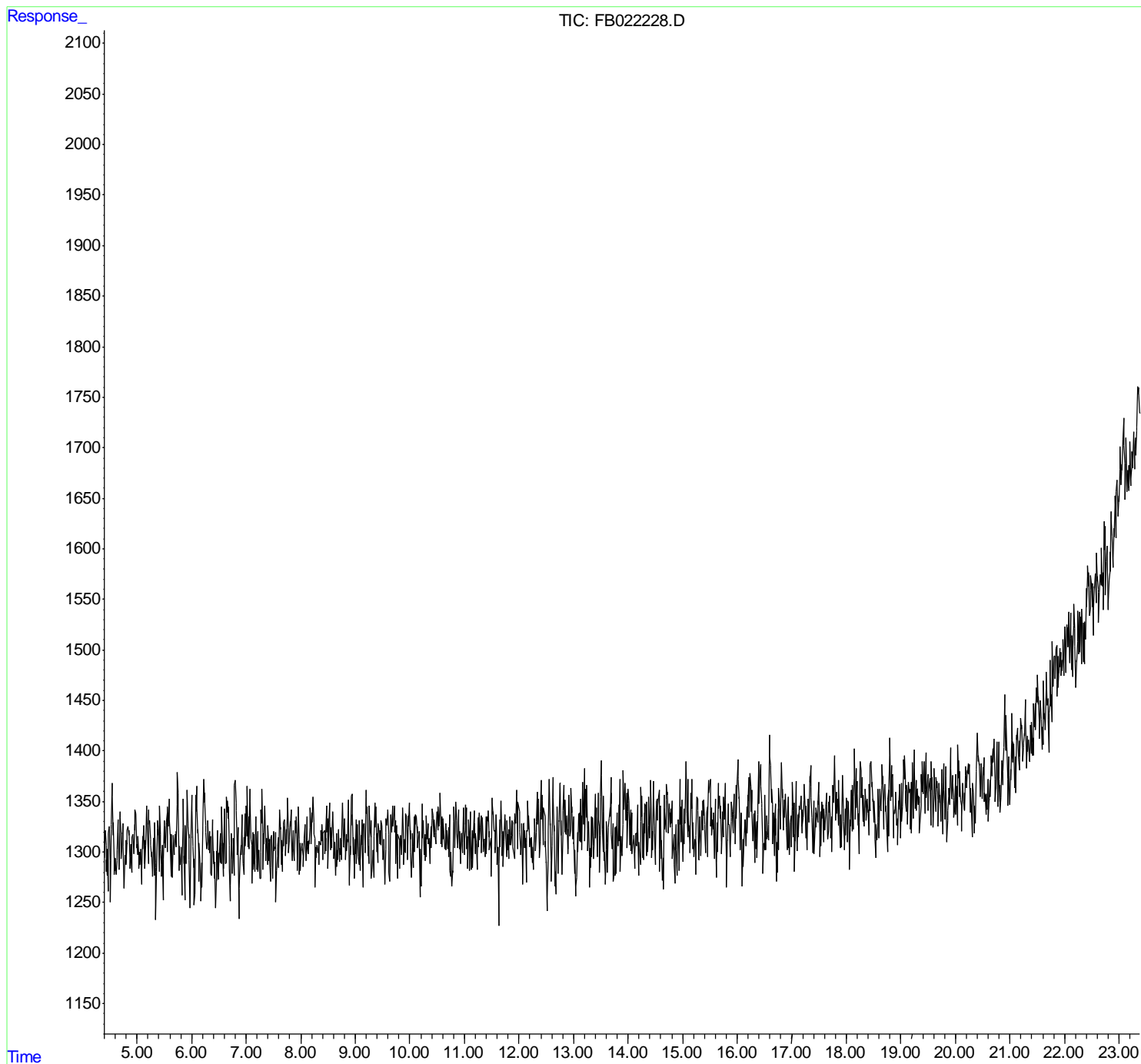
(m)=manual int.

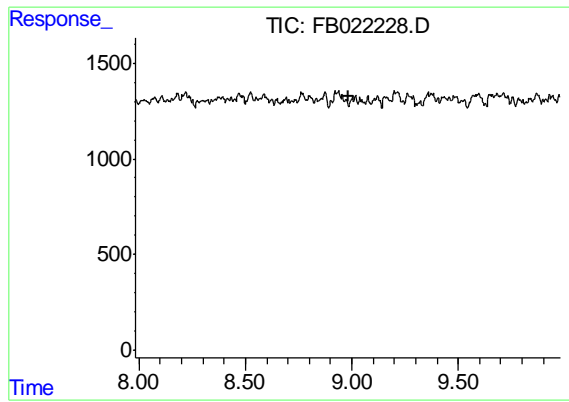
Data Path : Z:\pestpcbsrv\HPCHEM1\FID_B\Data\FB082819\
Data File : FB022228.D
Signal(s) : FID2B.CH
Acq On : 28 Aug 2019 12:04
Operator : DD/AJ
Sample : K4568-04
Misc : 5.00/5.00ml DI WATER
ALS Vial : 9 Sample Multiplier: 1

Instrument :
FID_B
ClientSampleId :
SB-15-COMP

Integration File: Calibration.e
Quant Time: Aug 28 23:20:46 2019
Quant Method : Z:\pestpcbsrv\HPCHEM1\FID_B\Method\FB082019.M
Quant Title :
QLast Update : Wed Aug 21 07:59:08 2019
Response via : Initial Calibration
Integrator: ChemStation

Volume Inj. : 5 g/ml
Signal Phase : RTX-502.2
Signal Info : 60mx0.53mmx3.00um





#5 AAA-TFT

R.T.: 0.000 min
Exp R.T. : 8.982 min
Response: 0
Conc: N.D.

Instrument :
FID_B
ClientSampleId :
SB-15-COMP