

Data Path : Z:\pestpcbsrv\HPCHEM1\FID_B\Data\FB090622\
Data File : FB028122.D
Signal(s) : FID2B.CH
Acq On : 6 Sep 2022 19:58
Operator : AJ/MA
Sample : N4501-16
Misc : 5.02G/5.00 ML DI WATER
ALS Vial : 16 Sample Multiplier: 1

Instrument :
FID_B
ClientSampleId :
SB-16-COMP

Integration File: Calibration.e
Quant Time: Sep 07 04:49:26 2022
Quant Method : Z:\pestpcbsrv\HPCHEM1\FID_B\Method\FB080922.M
Quant Title :
QLast Update : Tue Aug 09 12:12:39 2022
Response via : Initial Calibration
Integrator: ChemStation

Volume Inj. : 5 g/ml
Signal Phase : RTX-502.2
Signal Info : 60mx0.53mmx3.00um

Compound	R.T.	Response	Conc Units
----------	------	----------	------------

System Monitoring Compounds

Target Compounds

(f)=RT Delta > 1/2 Window

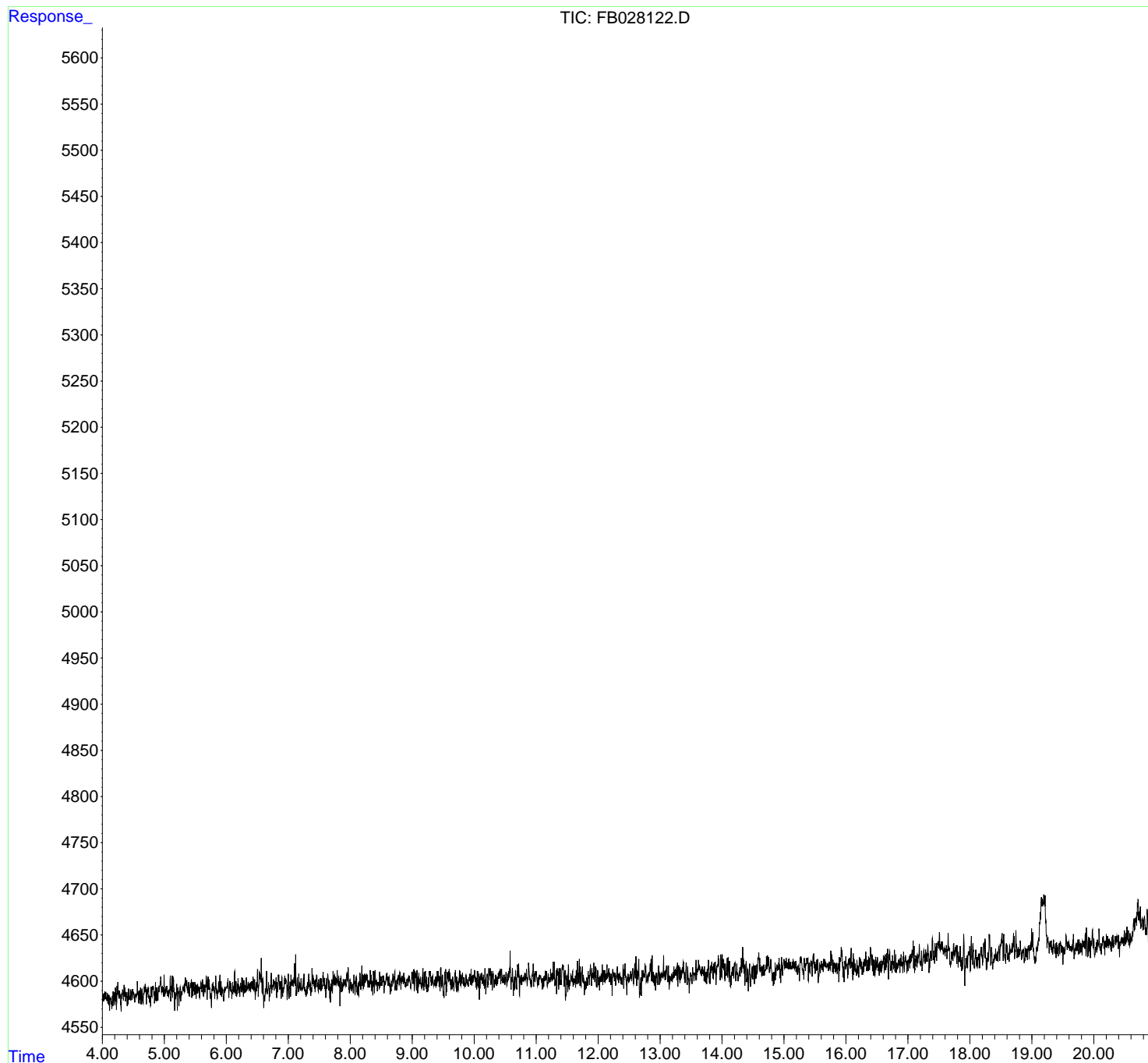
(m)=manual int.

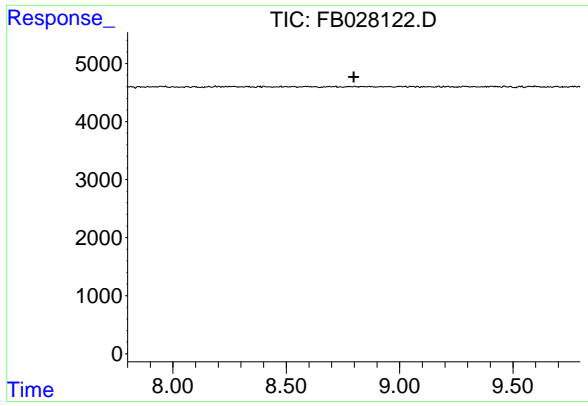
Data Path : Z:\pestpcbsrv\HPCHEM1\FID_B\Data\FB090622\
Data File : FB028122.D
Signal(s) : FID2B.CH
Acq On : 6 Sep 2022 19:58
Operator : AJ/MA
Sample : N4501-16
Misc : 5.02G/5.00 ML DI WATER
ALS Vial : 16 Sample Multiplier: 1

Instrument :
FID_B
ClientSampleId :
SB-16-COMP

Integration File: Calibration.e
Quant Time: Sep 07 04:49:26 2022
Quant Method : Z:\pestpcbsrv\HPCHEM1\FID_B\Method\FB080922.M
Quant Title :
QLast Update : Tue Aug 09 12:12:39 2022
Response via : Initial Calibration
Integrator: ChemStation

Volume Inj. : 5 g/ml
Signal Phase : RTX-502.2
Signal Info : 60mx0.53mmx3.00um





#5 AAA-TFT

R.T.: 0.000 min
Exp R.T.: 8.798 min
Response: 0
Conc: N.D.

Instrument : FID_B
ClientSampleId : SB-16-COMP