

Data Path : Z:\pestpcbsrv\HPCHEM1\FID\_B\Data\FB090719\  
Data File : FB022372.D  
Signal(s) : FID2B.CH  
Acq On : 7 Sep 2019 17:34  
Operator : DD/AJ  
Sample : K4752-16  
Misc : 5.06g/5.00ML DI WATER  
ALS Vial : 11 Sample Multiplier: 1

Instrument :  
FID\_B  
ClientSampleId :

Integration File: Calibration.e  
Quant Time: Sep 09 00:45:54 2019  
Quant Method : Z:\pestpcbsrv\HPCHEM1\FID\_B\Method\FB090419.M  
Quant Title :  
QLast Update : Wed Sep 04 17:01:40 2019  
Response via : Initial Calibration  
Integrator: ChemStation

Volume Inj. : 5 g/ml  
Signal Phase : RTX-502.2  
Signal Info : 60mx0.53mmx3.00um

Compound	R.T.	Response	Conc Units
-----			
System Monitoring Compounds			
5) s AAA-TFT	8.973	491111	16.884 ng/ml
Target Compounds			
-----			

(f)=RT Delta > 1/2 Window

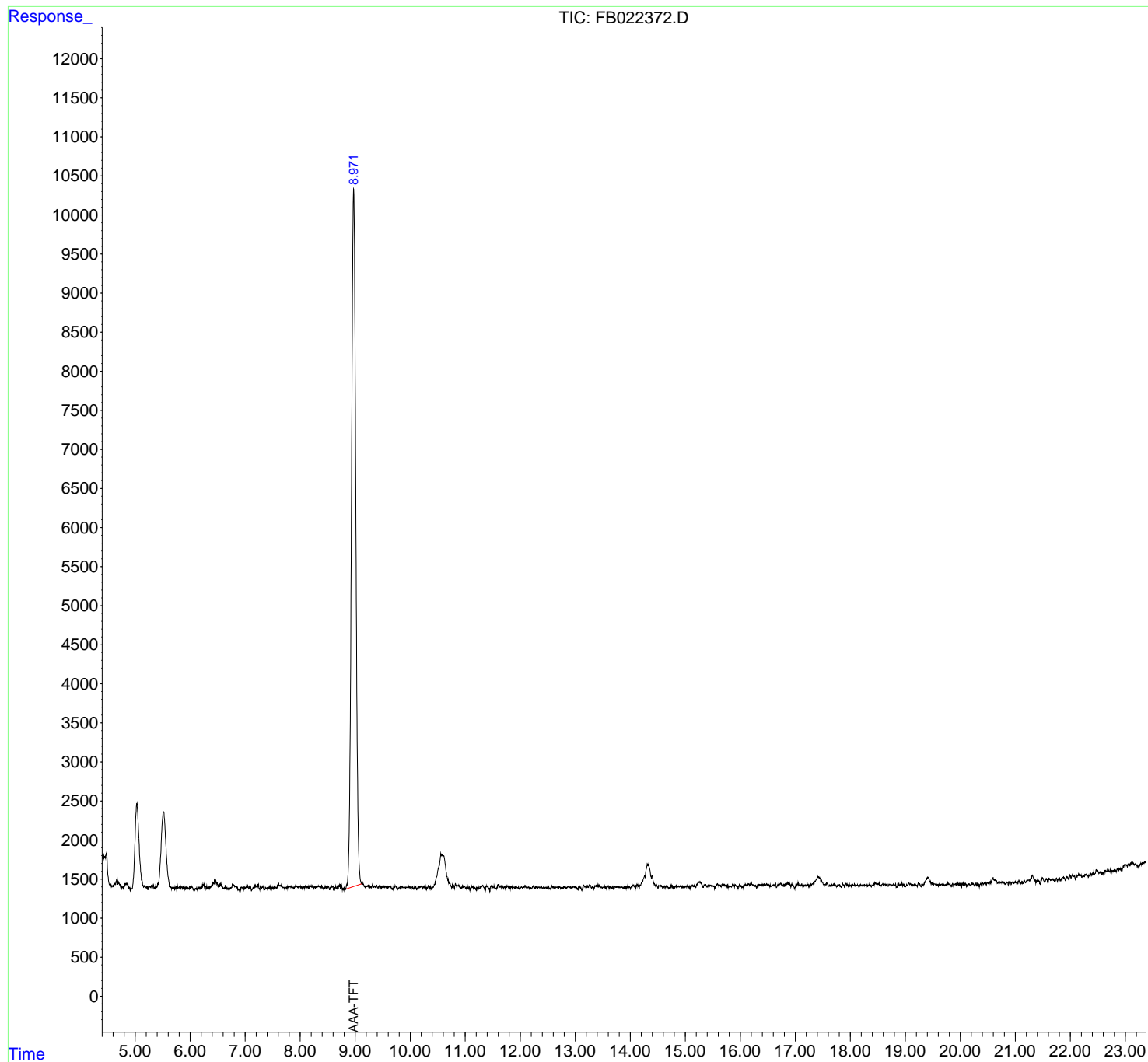
(m)=manual int.

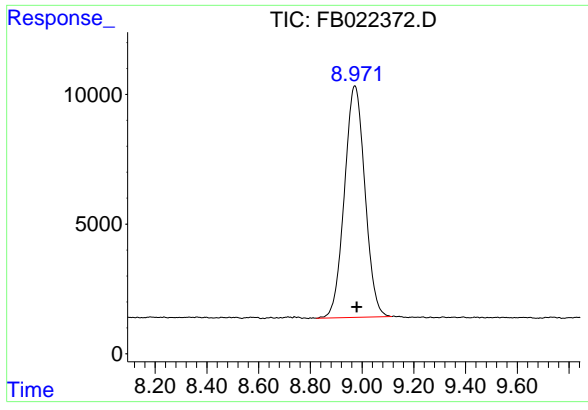
Data Path : Z:\pestpcbsrv\HPCHEM1\FID\_B\Data\FB090719\  
Data File : FB022372.D  
Signal(s) : FID2B.CH  
Acq On : 7 Sep 2019 17:34  
Operator : DD/AJ  
Sample : K4752-16  
Misc : 5.06g/5.00ML DI WATER  
ALS Vial : 11 Sample Multiplier: 1

Instrument :  
FID\_B  
ClientSampled :

Integration File: Calibration.e  
Quant Time: Sep 09 00:45:54 2019  
Quant Method : Z:\pestpcbsrv\HPCHEM1\FID\_B\Method\FB090419.M  
Quant Title :  
QLast Update : Wed Sep 04 17:01:40 2019  
Response via : Initial Calibration  
Integrator: ChemStation

Volume Inj. : 5 g/ml  
Signal Phase : RTX-502.2  
Signal Info : 60mx0.53mmx3.00um





#5 AAA-TFT

R.T.: 8.973 min  
Delta R.T.: -0.006 min  
Response: 491111  
Conc: 16.88 ng/ml

Instrument :  
FID\_B  
ClientSampleId :