

Data Path : Z:\pestpcbsrv\HPCHEM1\FID_B\Data\FB091118\
 Data File : FB017678.D
 Signal(s) : FID2B.CH
 Acq On : 11 Sep 2018 21:43
 Operator : MJ/SJ
 Sample : J4853-02
 Misc : 5.01g/5.00mL DI Water
 ALS Vial : 22 Sample Multiplier: 1

Integration File: Calibration.e
 Quant Time: Sep 12 08:54:25 2018
 Quant Method : Z:\pestpcbsrv\HPCHEM1\FID_B\Method\FB082018.M
 Quant Title :
 QLast Update : Mon Aug 20 13:42:39 2018
 Response via : Initial Calibration
 Integrator: ChemStation

Volume Inj. : 5 g/ml
 Signal Phase : RTX-502.2
 Signal Info : 60mx0.53mmx3.00um

Compound	R.T.	Response	Conc Units

System Monitoring Compounds			
5) s AAA-TFT	9.109	143736	17.434 ng/ml
Target Compounds			
6) t Toluene	10.963	16703	1.161 ng/ml
8) t m-Xylene	13.536	11426	0.735 ng/ml
9) t O-Xylene	14.269	3179	0.194 ng/ml

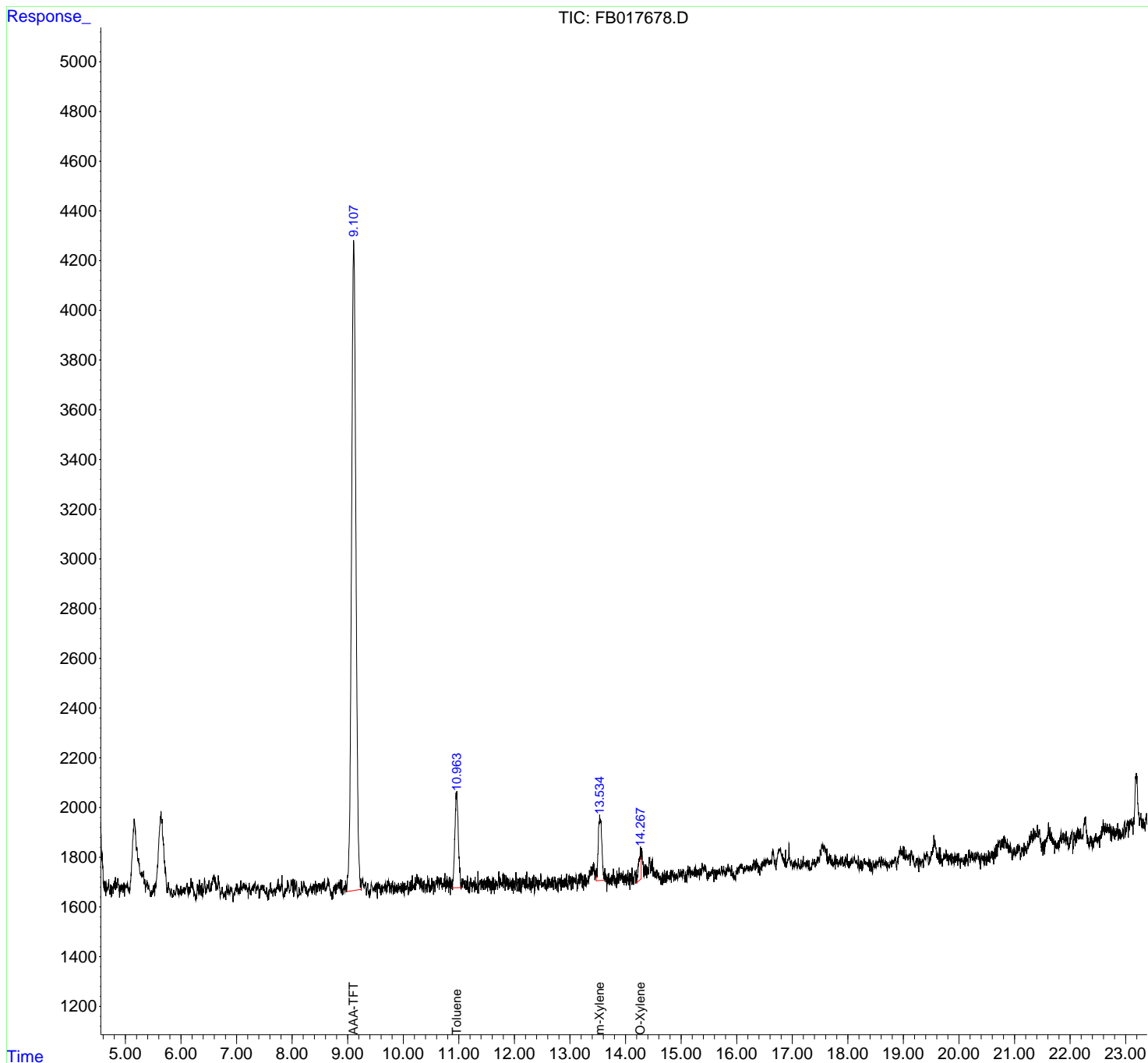
(f)=RT Delta > 1/2 Window

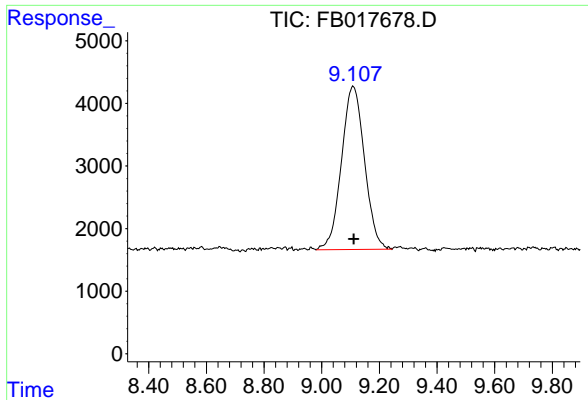
(m)=manual int.

Data Path : Z:\pestpcbsrv\HPCHEM1\FID_B\Data\FB091118\
 Data File : FB017678.D
 Signal(s) : FID2B.CH
 Acq On : 11 Sep 2018 21:43
 Operator : MJ/SJ
 Sample : J4853-02
 Misc : 5.01g/5.00mL DI Water
 ALS Vial : 22 Sample Multiplier: 1

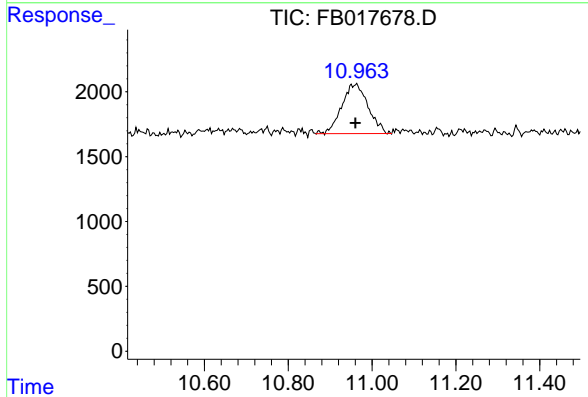
Integration File: Calibration.e
 Quant Time: Sep 12 08:54:25 2018
 Quant Method : Z:\pestpcbsrv\HPCHEM1\FID_B\Method\FB082018.M
 Quant Title :
 QLast Update : Mon Aug 20 13:42:39 2018
 Response via : Initial Calibration
 Integrator: ChemStation

Volume Inj. : 5 g/ml
 Signal Phase : RTX-502.2
 Signal Info : 60mx0.53mmx3.00um

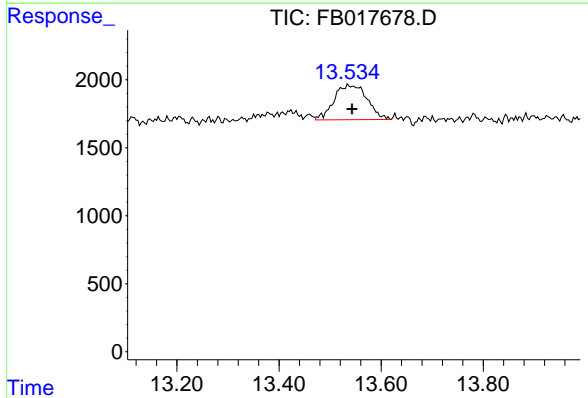




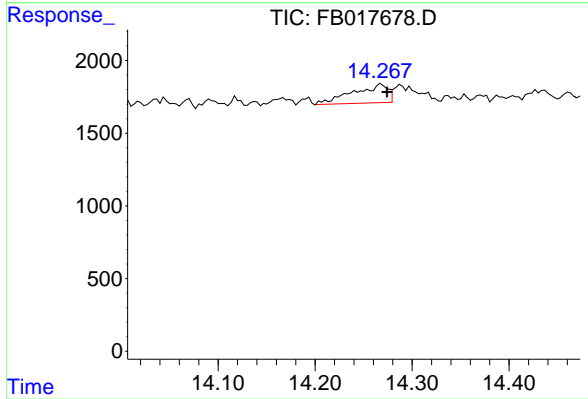
#5 AAA-TFT
 R.T.: 9.109 min
 Delta R.T.: -0.002 min
 Response: 143736
 Conc: 17.43 ng/ml



#6 Toluene
 R.T.: 10.963 min
 Delta R.T.: 0.003 min
 Response: 16703
 Conc: 1.16 ng/ml



#8 m-Xylene
 R.T.: 13.536 min
 Delta R.T.: -0.007 min
 Response: 11426
 Conc: 0.73 ng/ml



#9 O-Xylene
 R.T.: 14.269 min
 Delta R.T.: -0.006 min
 Response: 3179
 Conc: 0.19 ng/ml