

Data Path : Z:\pestpcbsrv\HPCHEM1\FID\_B\Data\FB091219\  
 Data File : FB022488.D  
 Signal(s) : FID2B.CH  
 Acq On : 13 Sep 2019 1:47  
 Operator : DD/AJ  
 Sample : K4866-05  
 Misc : 5.06g/5.00ML DI WATER  
 ALS Vial : 36 Sample Multiplier: 1

Integration File: Calibration.e  
 Quant Time: Sep 13 05:37:33 2019  
 Quant Method : Z:\pestpcbsrv\HPCHEM1\FID\_B\Method\FB090419.M  
 Quant Title :  
 QLast Update : Wed Sep 04 17:01:40 2019  
 Response via : Initial Calibration  
 Integrator: ChemStation

Volume Inj. : 5 g/ml  
 Signal Phase : RTX-502.2  
 Signal Info : 60mx0.53mmx3.00um

Compound	R.T.	Response	Conc Units
-----			
System Monitoring Compounds			
5) s AAA-TFT	8.967	537453	18.477 ng/ml
Target Compounds			
7) t Ethylbenzene	13.226	199766	6.663 ng/ml
9) t O-Xylene	14.143	47642	1.964 ng/ml
10) t 1,2,4-Trimethylbenzene	16.427	21368	0.820 ng/ml
-----			

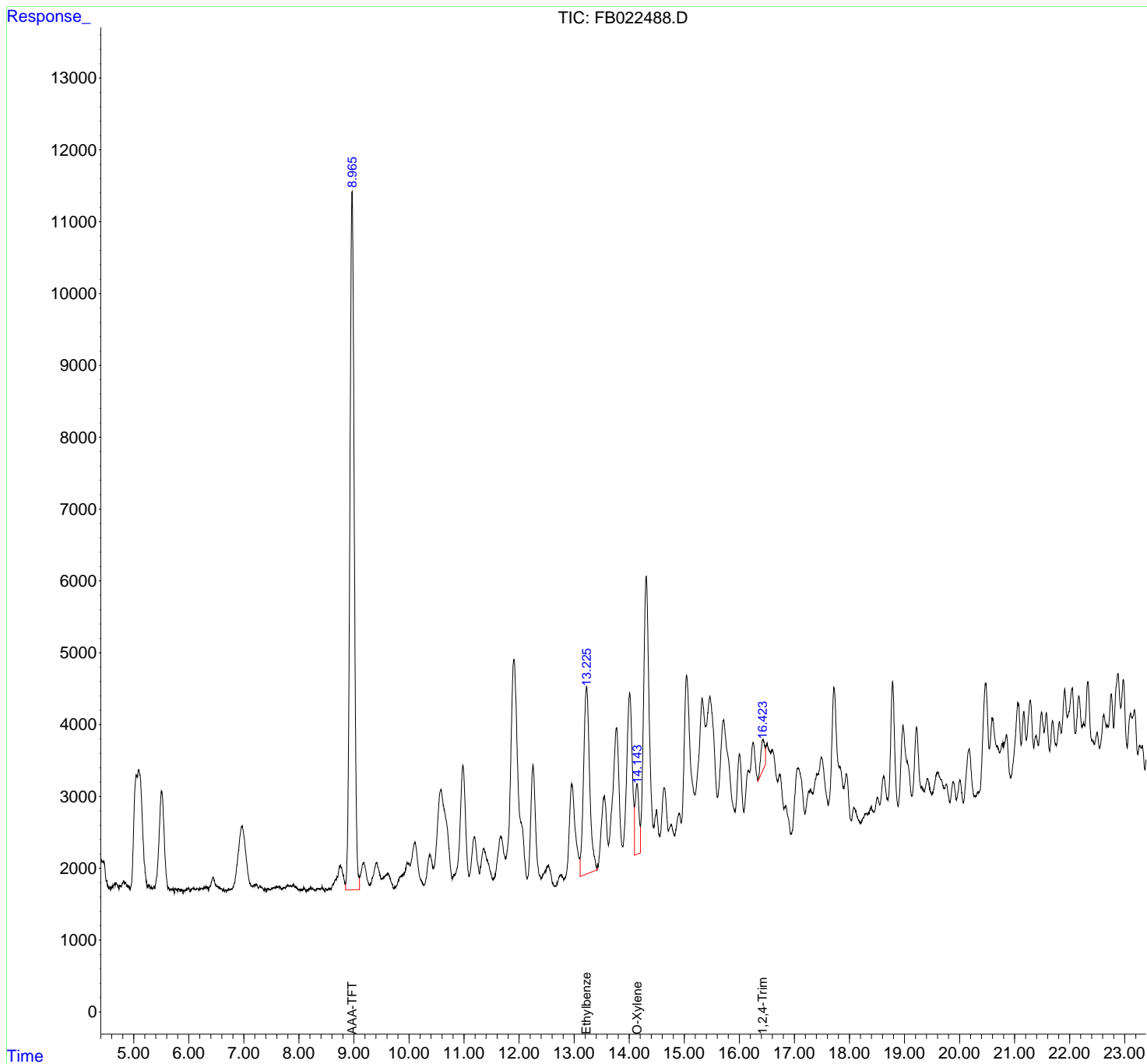
(f)=RT Delta > 1/2 Window

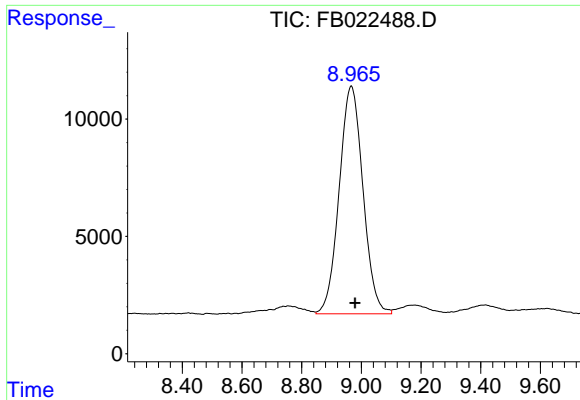
(m)=manual int.

Data Path : Z:\pestpcbsrv\HPCHEM1\FID\_B\Data\FB091219\  
 Data File : FB022488.D  
 Signal(s) : FID2B.CH  
 Acq On : 13 Sep 2019 1:47  
 Operator : DD/AJ  
 Sample : K4866-05  
 Misc : 5.06g/5.00ML DI WATER  
 ALS Vial : 36 Sample Multiplier: 1

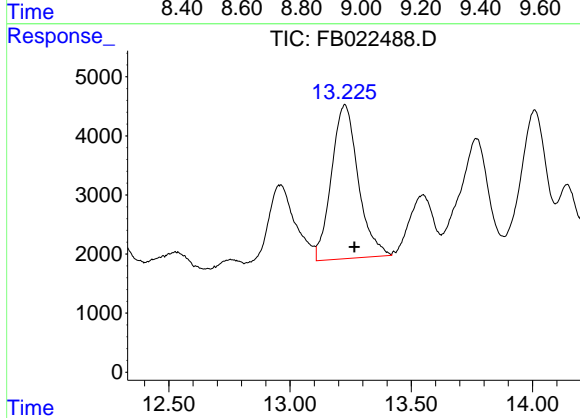
Integration File: Calibration.e  
 Quant Time: Sep 13 05:37:33 2019  
 Quant Method : Z:\pestpcbsrv\HPCHEM1\FID\_B\Method\FB090419.M  
 Quant Title :  
 QLast Update : Wed Sep 04 17:01:40 2019  
 Response via : Initial Calibration  
 Integrator: ChemStation

Volume Inj. : 5 g/ml  
 Signal Phase : RTX-502.2  
 Signal Info : 60mx0.53mmx3.00um

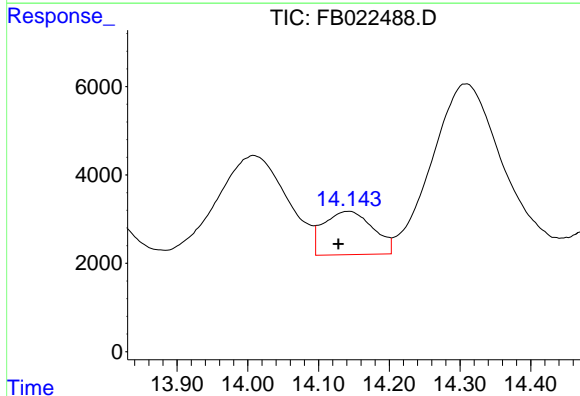




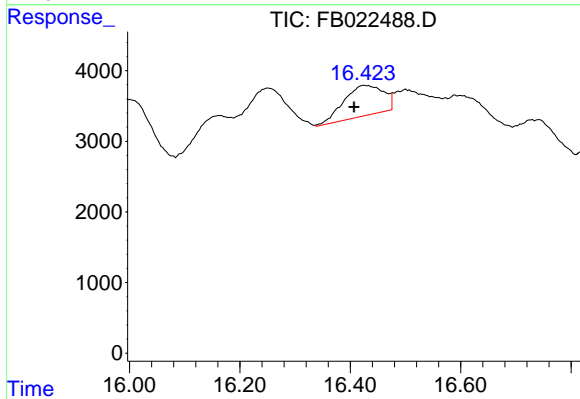
#5 AAA-TFT  
 R.T.: 8.967 min  
 Delta R.T.: -0.012 min  
 Response: 537453  
 Conc: 18.48 ng/ml



#7 Ethylbenzene  
 R.T.: 13.226 min  
 Delta R.T.: -0.039 min  
 Response: 199766  
 Conc: 6.66 ng/ml



#9 O-Xylene  
 R.T.: 14.143 min  
 Delta R.T.: 0.015 min  
 Response: 47642  
 Conc: 1.96 ng/ml



#10 1,2,4-Trimethylbenzene  
 R.T.: 16.427 min  
 Delta R.T.: 0.020 min  
 Response: 21368  
 Conc: 0.82 ng/ml