

Data Path : Z:\pestpcbsrv\HPCHEM1\FID_B\Data\FB091219\
 Data File : FB022493.D
 Signal(s) : FID2B.CH
 Acq On : 13 Sep 2019 4:17
 Operator : DD/AJ
 Sample : 20 PPB GRO STD
 Misc :
 ALS Vial : 41 Sample Multiplier: 1

Integration File: Calibration.e
 Quant Time: Sep 13 05:38:49 2019
 Quant Method : Z:\pestpcbsrv\HPCHEM1\FID_B\Method\FB090419.M
 Quant Title :
 QLast Update : Wed Sep 04 17:01:40 2019
 Response via : Initial Calibration
 Integrator: ChemStation

Volume Inj. : 5 g/ml
 Signal Phase : RTX-502.2
 Signal Info : 60mx0.53mmx3.00um

Compound	R.T.	Response	Conc Units

System Monitoring Compounds			
5) s AAA-TFT	8.965	504455	17.343 ng/ml
Target Compounds			
1) t 2-Methylpentane	4.832	961288	19.565 ng/ml
2) t 2,2,4-Trimethylpentane	7.583	1135090	21.982 ng/ml
3) t n-Heptane	7.923	364053	7.233 ng/ml
4) t Benzene	8.057	466368	7.858 ng/ml
6) t Toluene	10.806	1398346	29.394 ng/ml
7) t Ethylbenzene	13.252	437867	14.606 ng/ml
8) t m-Xylene	13.385	866347	32.611 ng/ml
9) t O-Xylene	14.115	829839	34.206 ng/ml
10) t 1,2,4-Trimethylbenzene	16.395	542702	20.816 ng/ml

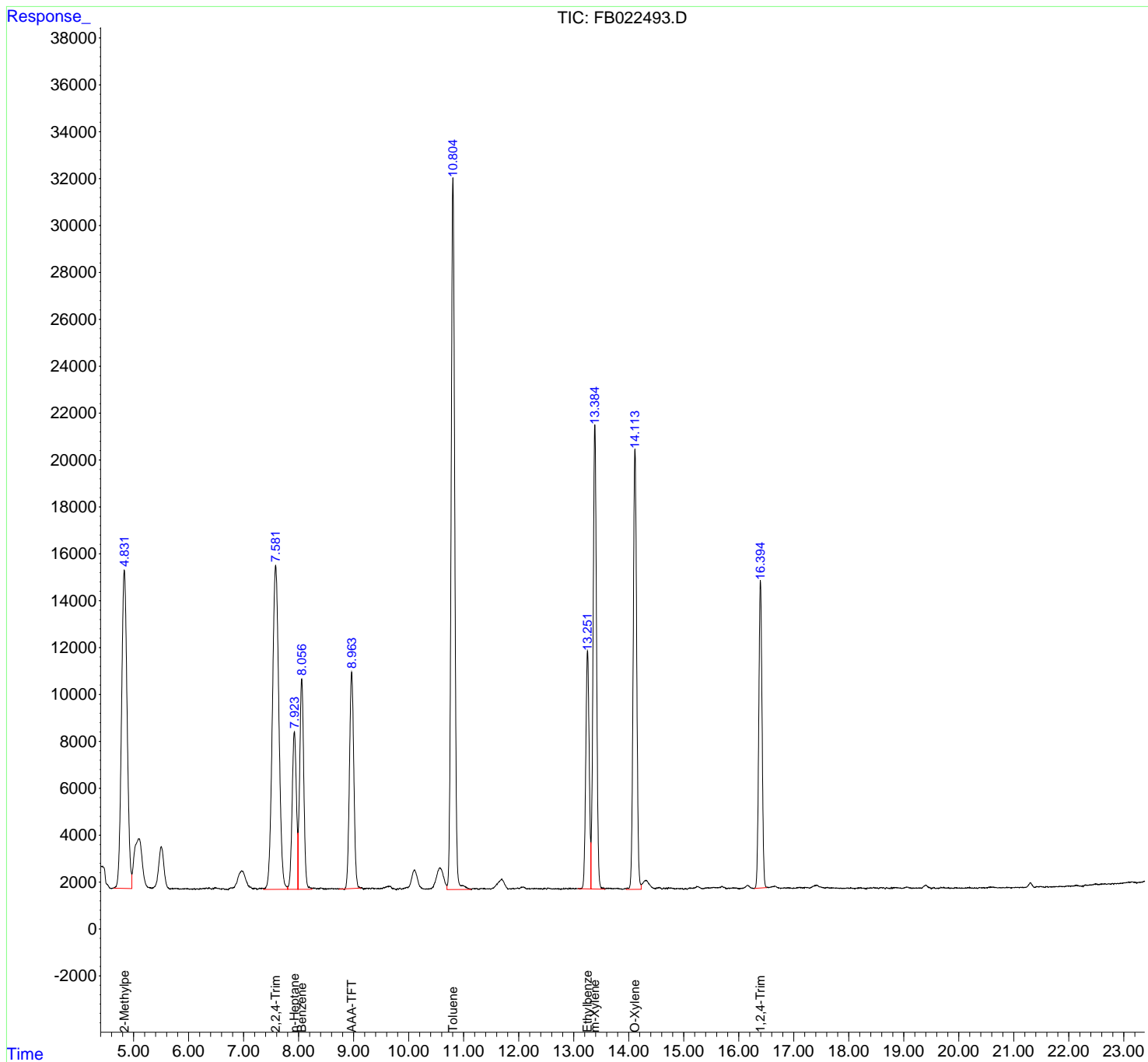
(f)=RT Delta > 1/2 Window

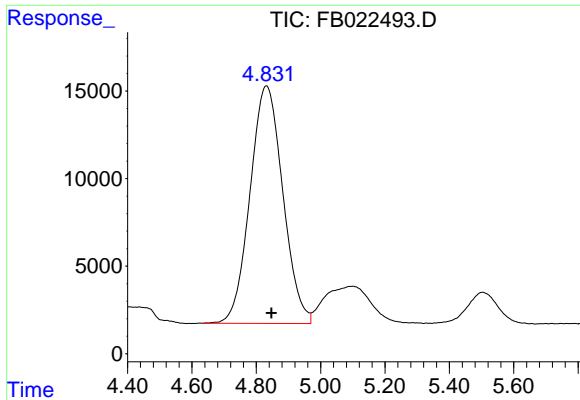
(m)=manual int.

Data Path : Z:\pestpcbsrv\HPCHEM1\FID_B\Data\FB091219\
 Data File : FB022493.D
 Signal(s) : FID2B.CH
 Acq On : 13 Sep 2019 4:17
 Operator : DD/AJ
 Sample : 20 PPB GRO STD
 Misc :
 ALS Vial : 41 Sample Multiplier: 1

Integration File: Calibration.e
 Quant Time: Sep 13 05:38:49 2019
 Quant Method : Z:\pestpcbsrv\HPCHEM1\FID_B\Method\FB090419.M
 Quant Title :
 QLast Update : Wed Sep 04 17:01:40 2019
 Response via : Initial Calibration
 Integrator: ChemStation

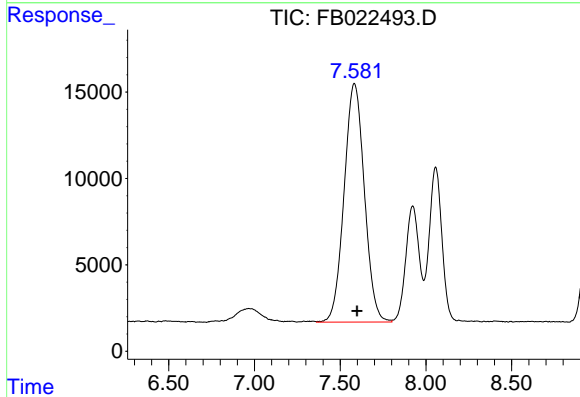
Volume Inj. : 5 g/ml
 Signal Phase : RTX-502.2
 Signal Info : 60mx0.53mmx3.00um





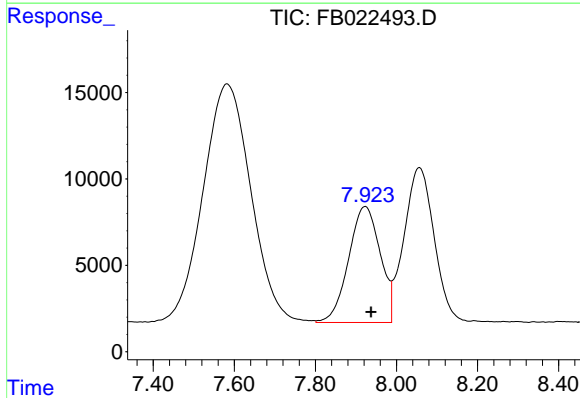
#1 2-Methylpentane

R.T.: 4.832 min
 Delta R.T.: -0.015 min
 Response: 961288
 Conc: 19.56 ng/ml



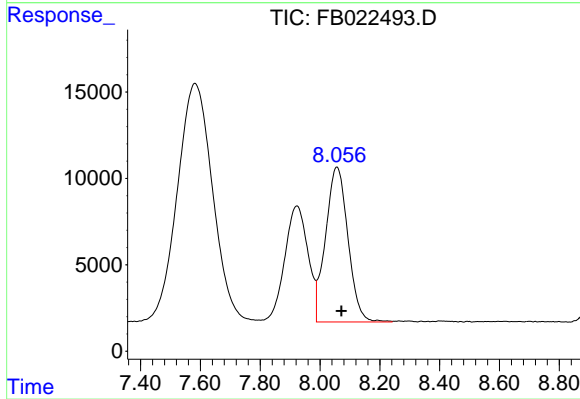
#2 2,2,4-Trimethylpentane

R.T.: 7.583 min
 Delta R.T.: -0.015 min
 Response: 1135090
 Conc: 21.98 ng/ml



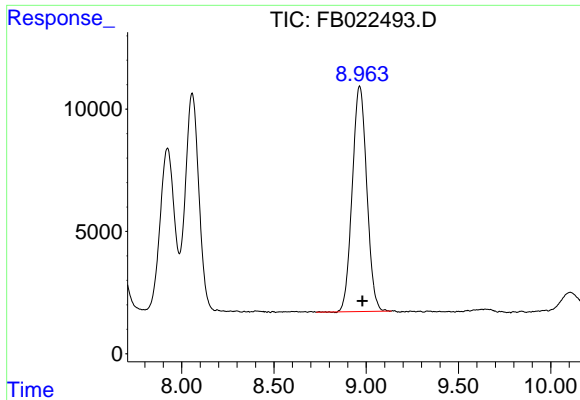
#3 n-Heptane

R.T.: 7.923 min
 Delta R.T.: -0.015 min
 Response: 364053
 Conc: 7.23 ng/ml

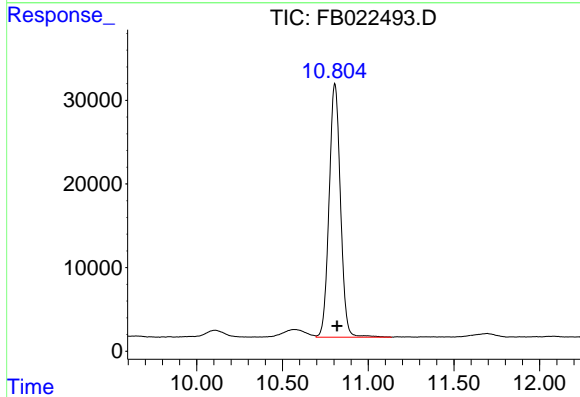


#4 Benzene

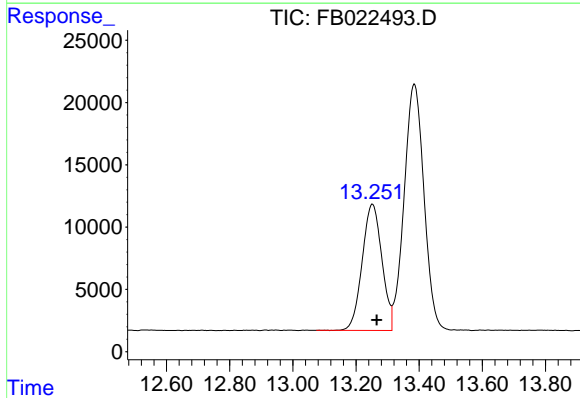
R.T.: 8.057 min
 Delta R.T.: -0.015 min
 Response: 466368
 Conc: 7.86 ng/ml



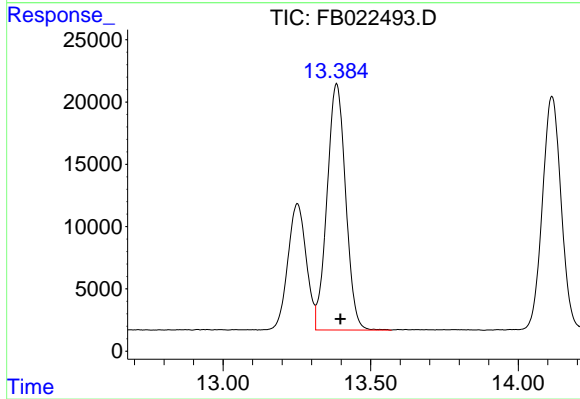
#5 AAA-TFT
 R.T.: 8.965 min
 Delta R.T.: -0.014 min
 Response: 504455
 Conc: 17.34 ng/ml



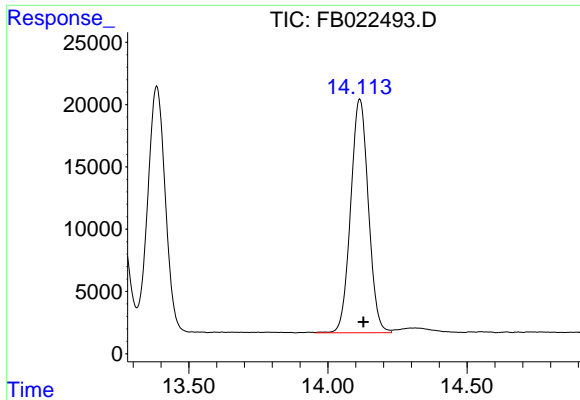
#6 Toluene
 R.T.: 10.806 min
 Delta R.T.: -0.014 min
 Response: 1398346
 Conc: 29.39 ng/ml



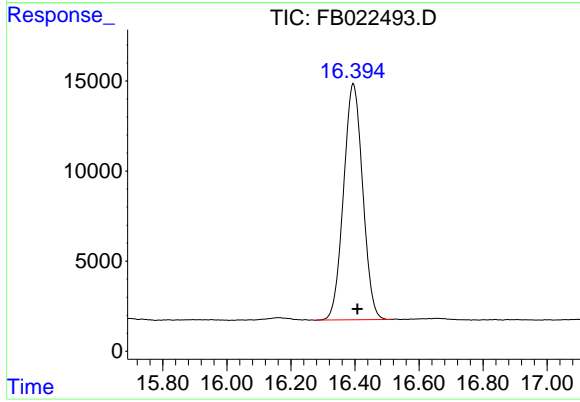
#7 Ethylbenzene
 R.T.: 13.252 min
 Delta R.T.: -0.013 min
 Response: 437867
 Conc: 14.61 ng/ml



#8 m-Xylene
 R.T.: 13.385 min
 Delta R.T.: -0.013 min
 Response: 866347
 Conc: 32.61 ng/ml



#9 O-Xylene
R.T.: 14.115 min
Delta R.T.: -0.013 min
Response: 829839
Conc: 34.21 ng/ml



#10 1,2,4-Trimethylbenzene
R.T.: 16.395 min
Delta R.T.: -0.012 min
Response: 542702
Conc: 20.82 ng/ml