

Data Path : Z:\pestpcbsrv\HPCHEM1\FID_B\Data\FB091322\
 Data File : FB028246.D
 Signal(s) : FID2B.CH
 Acq On : 13 Sep 2022 13:39
 Operator : AJ/MA
 Sample : N4569-02
 Misc : 5.05G/5.00 ML DI WATER
 ALS Vial : 5 Sample Multiplier: 1

Instrument :
 FID_B
 ClientSampleId :

Integration File: Calibration.e
 Quant Time: Sep 14 12:36:39 2022
 Quant Method : Z:\pestpcbsrv\HPCHEM1\FID_B\Method\FB090822.M
 Quant Title :
 QLast Update : Thu Sep 08 15:28:37 2022
 Response via : Initial Calibration
 Integrator: ChemStation

Volume Inj. : 5 g/ml
 Signal Phase : RTX-502.2
 Signal Info : 60mx0.53mmx3.00um

Compound	R.T.	Response	Conc Units

System Monitoring Compounds			
Target Compounds			

(f)=RT Delta > 1/2 Window

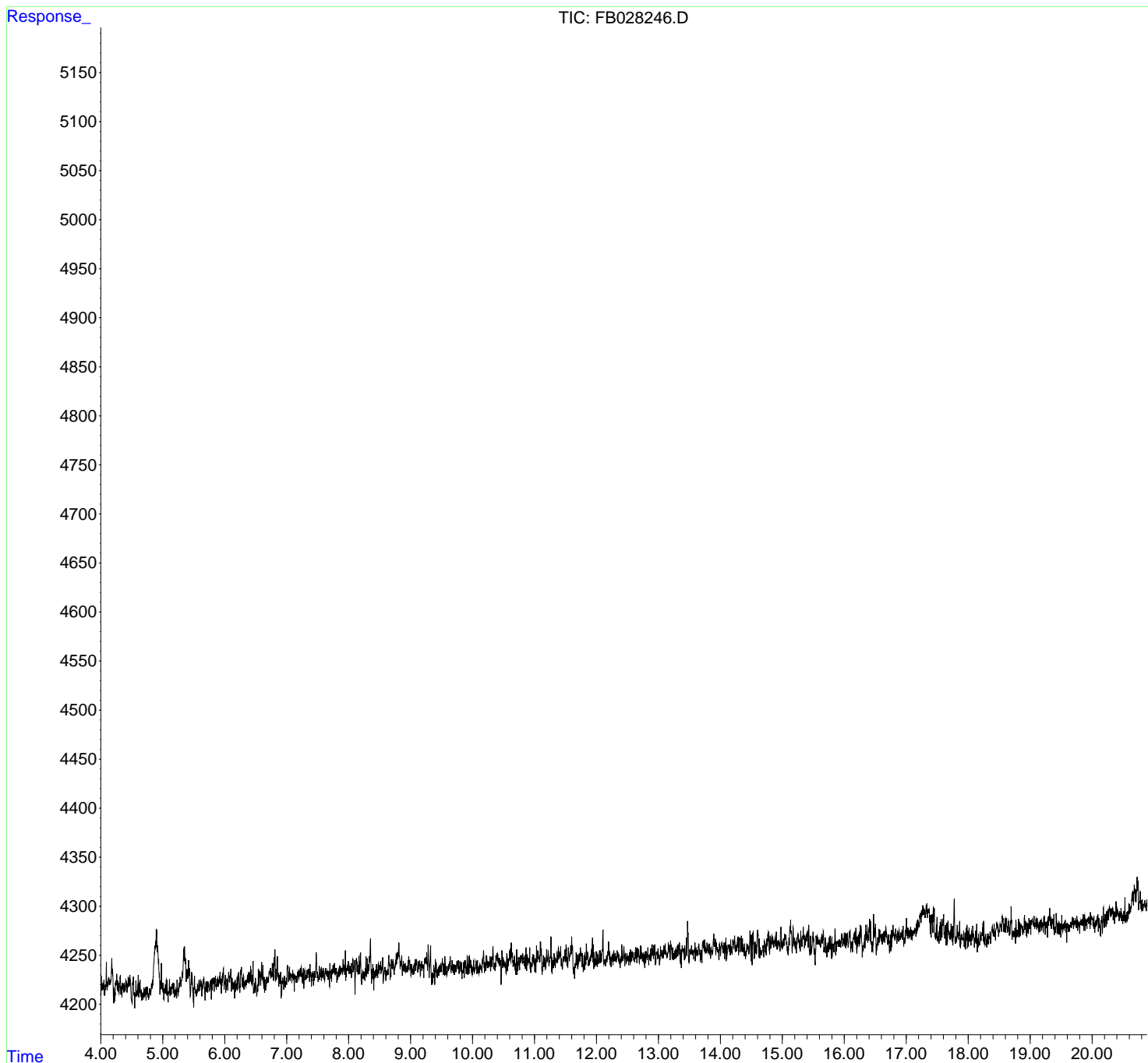
(m)=manual int.

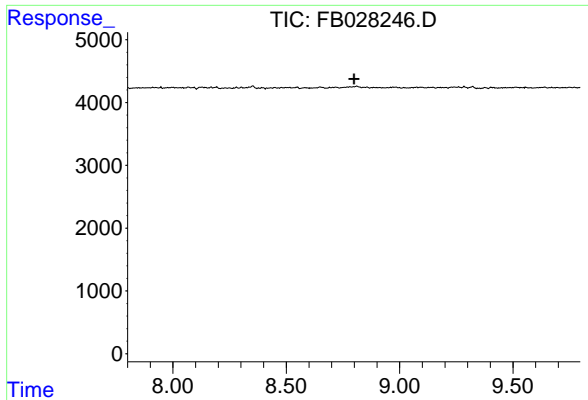
Data Path : Z:\pestpcbsrv\HPCHEM1\FID_B\Data\FB091322\
 Data File : FB028246.D
 Signal(s) : FID2B.CH
 Acq On : 13 Sep 2022 13:39
 Operator : AJ/MA
 Sample : N4569-02
 Misc : 5.05G/5.00 ML DI WATER
 ALS Vial : 5 Sample Multiplier: 1

Instrument :
 FID_B
 ClientSampleId :

Integration File: Calibration.e
 Quant Time: Sep 14 12:36:39 2022
 Quant Method : Z:\pestpcbsrv\HPCHEM1\FID_B\Method\FB090822.M
 Quant Title :
 QLast Update : Thu Sep 08 15:28:37 2022
 Response via : Initial Calibration
 Integrator: ChemStation

Volume Inj. : 5 g/ml
 Signal Phase : RTX-502.2
 Signal Info : 60mx0.53mmx3.00um





#5 AAA-TFT

R.T.: 0.000 min
Exp R.T.: 8.800 min
Response: 0
Conc: N.D.

Instrument : FID_B
ClientSampleId :