

Data Path : Z:\pestpcbsrv\HPCHEM1\FID_B\Data\FB091322\
 Data File : FB028252.D
 Signal(s) : FID2B.CH
 Acq On : 13 Sep 2022 20:11
 Operator : AJ/MA
 Sample : N4569-02 50X
 Misc : 5.00G/5.00 ML DI WATER
 ALS Vial : 14 Sample Multiplier: 1

Instrument :
 FID_B
ClientSampleId :
 SASP2-T-6-(5-10)

Integration File: Calibration.e
 Quant Time: Sep 14 12:37:23 2022
 Quant Method : Z:\pestpcbsrv\HPCHEM1\FID_B\Method\FB090822.M
 Quant Title :
 QLast Update : Thu Sep 08 15:28:37 2022
 Response via : Initial Calibration
 Integrator: ChemStation

Volume Inj. : 5 g/ml
 Signal Phase : RTX-502.2
 Signal Info : 60mx0.53mmx3.00um

Compound	R.T.	Response	Conc Units

System Monitoring Compounds			
5) s AAA-TFT	8.798	243712	20.362 ng/ml
Target Compounds			

(f)=RT Delta > 1/2 Window

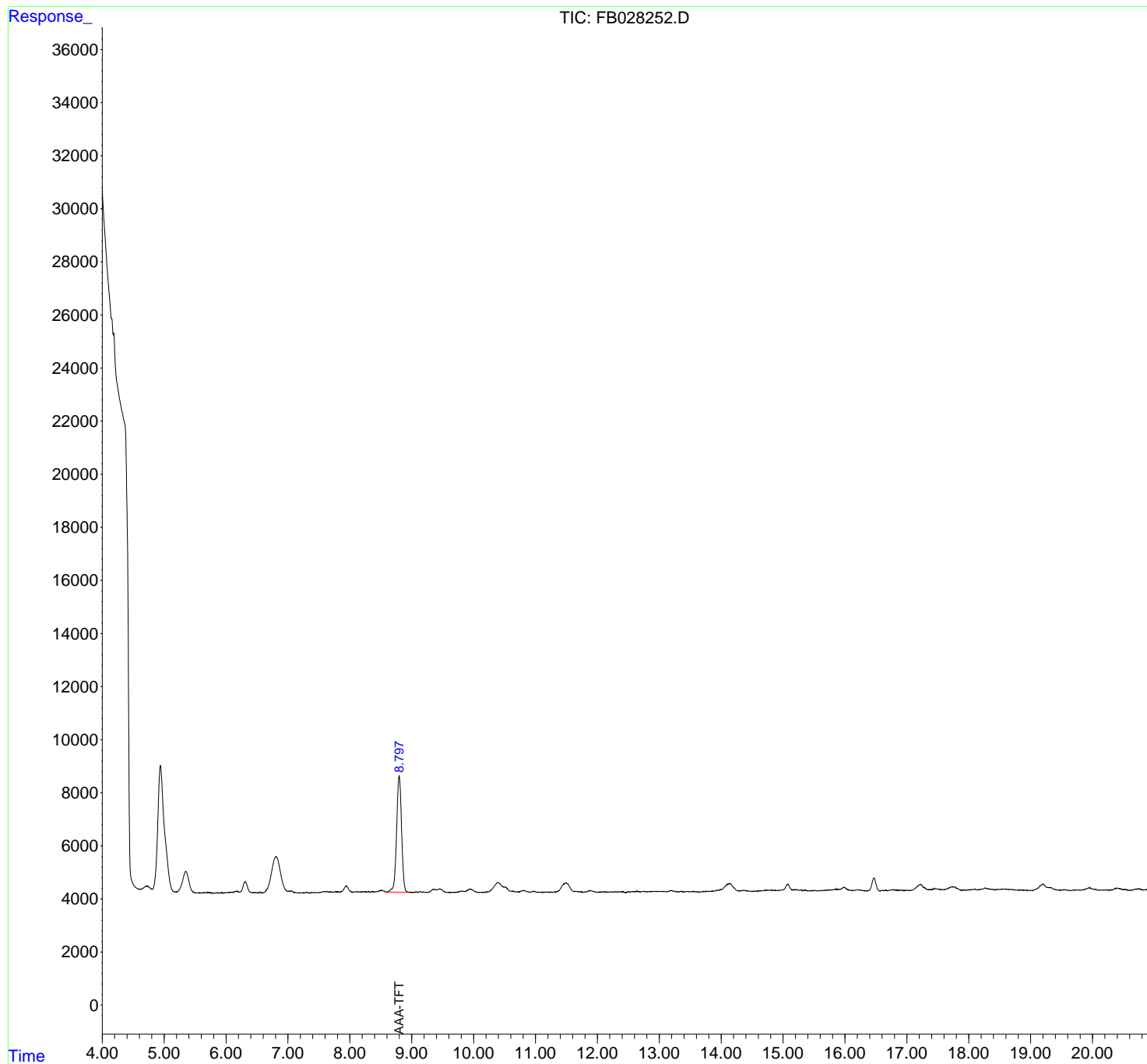
(m)=manual int.

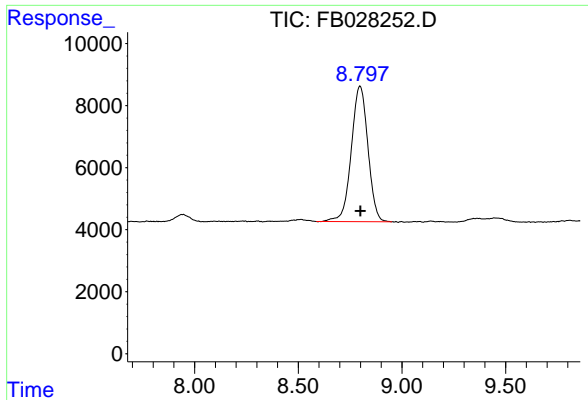
Data Path : Z:\pestpcbsrv\HPCHEM1\FID_B\Data\FB091322\
Data File : FB028252.D
Signal(s) : FID2B.CH
Acq On : 13 Sep 2022 20:11
Operator : AJ/MA
Sample : N4569-02 50X
Misc : 5.00G/5.00 ML DI WATER
ALS Vial : 14 Sample Multiplier: 1

Instrument :
FID_B
ClientSampleId :
SASP2-T-6-(5-10)

Integration File: Calibration.e
Quant Time: Sep 14 12:37:23 2022
Quant Method : Z:\pestpcbsrv\HPCHEM1\FID_B\Method\FB090822.M
Quant Title :
QLast Update : Thu Sep 08 15:28:37 2022
Response via : Initial Calibration
Integrator: ChemStation

Volume Inj. : 5 g/ml
Signal Phase : RTX-502.2
Signal Info : 60mx0.53mmx3.00um





#5 AAA-TFT

R.T.: 8.798 min
Delta R.T.: -0.002 min
Response: 243712
Conc: 20.36 ng/ml

Instrument :
FID_B
ClientSampleId :
SASP2-T-6-(5-10)