

Data Path : Z:\pestpcbsrv\HPCHEM1\FID_B\Data\FB091522\
 Data File : FB028271.D
 Signal(s) : FID2B.CH
 Acq On : 15 Sep 2022 10:10
 Operator : AJ/MA
 Sample : VBF0915S1
 Misc : 5.00G/5.00 ML DI WATER
 ALS Vial : 2 Sample Multiplier: 1

Instrument :
 FID_B
 ClientSampleId :

Integration File: Calibration.e
 Quant Time: Sep 16 05:53:16 2022
 Quant Method : Z:\pestpcbsrv\HPCHEM1\FID_B\Method\FB090822.M
 Quant Title :
 QLast Update : Thu Sep 08 15:28:37 2022
 Response via : Initial Calibration
 Integrator: ChemStation

Volume Inj. : 5 g/ml
 Signal Phase : RTX-502.2
 Signal Info : 60mx0.53mmx3.00um

Compound	R.T.	Response	Conc Units

System Monitoring Compounds			
5) s AAA-TFT	8.792	229537	19.178 ng/ml
Target Compounds			
10) t 1,2,4-Trimethylbenzene	16.194	1131	0.056 ng/ml

(f)=RT Delta > 1/2 Window

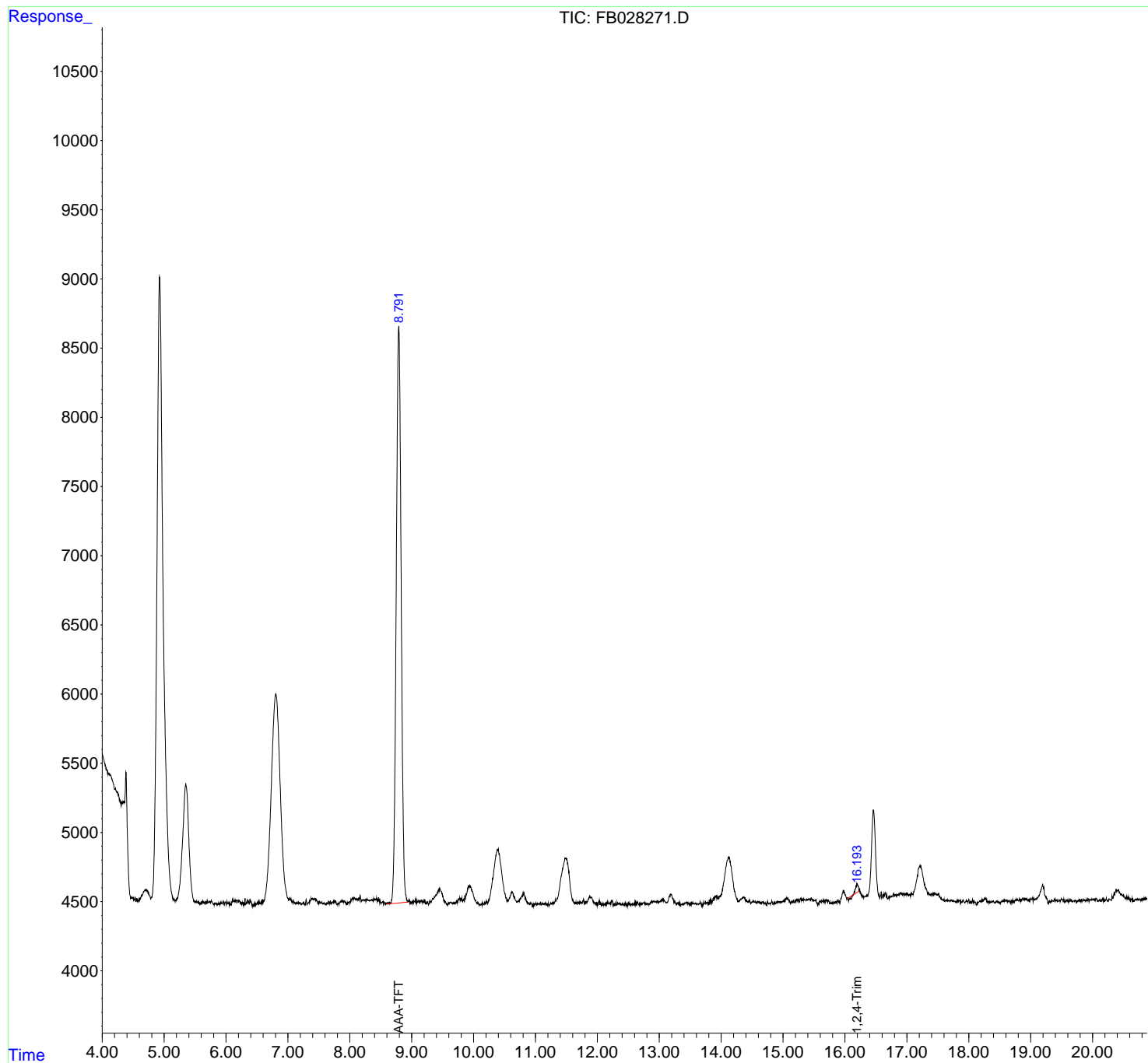
(m)=manual int.

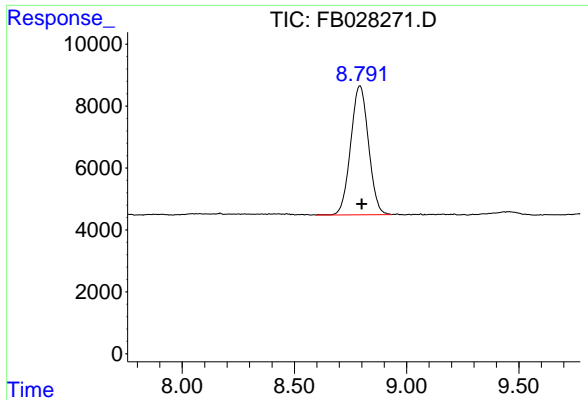
Data Path : Z:\pestpcbsrv\HPCHEM1\FID_B\Data\FB091522\
 Data File : FB028271.D
 Signal(s) : FID2B.CH
 Acq On : 15 Sep 2022 10:10
 Operator : AJ/MA
 Sample : VBF0915S1
 Misc : 5.00G/5.00 ML DI WATER
 ALS Vial : 2 Sample Multiplier: 1

Instrument :
 FID_B
 ClientSampleId :

Integration File: Calibration.e
 Quant Time: Sep 16 05:53:16 2022
 Quant Method : Z:\pestpcbsrv\HPCHEM1\FID_B\Method\FB090822.M
 Quant Title :
 QLast Update : Thu Sep 08 15:28:37 2022
 Response via : Initial Calibration
 Integrator: ChemStation

Volume Inj. : 5 g/ml
 Signal Phase : RTX-502.2
 Signal Info : 60mx0.53mmx3.00um

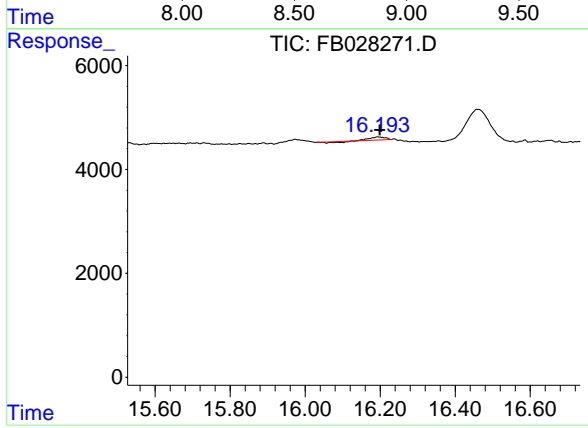




#5 AAA-TFT

R.T.: 8.792 min
 Delta R.T.: -0.008 min
 Response: 229537
 Conc: 19.18 ng/ml

Instrument :
 FID_B
 ClientSampleId :



#10 1,2,4-Trimethylbenzene

R.T.: 16.194 min
 Delta R.T.: -0.005 min
 Response: 1131
 Conc: 0.06 ng/ml