

Data Path : Z:\pestpcbsrv\HPCHEM1\FID_B\Data\FB091522\
 Data File : FB028291.D
 Signal(s) : FID2B.CH
 Acq On : 15 Sep 2022 23:51
 Operator : AJ/MA
 Sample : N4630-19
 Misc : 5.04G/5.00 ML DI WATER
 ALS Vial : 24 Sample Multiplier: 1

Instrument :
 FID_B
 ClientSampleId :

Integration File: Calibration.e
 Quant Time: Sep 16 05:54:54 2022
 Quant Method : Z:\pestpcbsrv\HPCHEM1\FID_B\Method\FB090822.M
 Quant Title :
 QLast Update : Thu Sep 08 15:28:37 2022
 Response via : Initial Calibration
 Integrator: ChemStation

Volume Inj. : 5 g/ml
 Signal Phase : RTX-502.2
 Signal Info : 60mx0.53mmx3.00um

Compound	R.T.	Response	Conc Units

System Monitoring Compounds			
5) s AAA-TFT	8.796	121997	10.193 ng/ml
Target Compounds			
7) t Ethylbenzene	13.029	28251	1.270 ng/ml
9) t O-Xylene	13.935	1221	0.058 ng/ml
10) t 1,2,4-Trimethylbenzene	16.250	3919	0.195 ng/ml

(f)=RT Delta > 1/2 Window

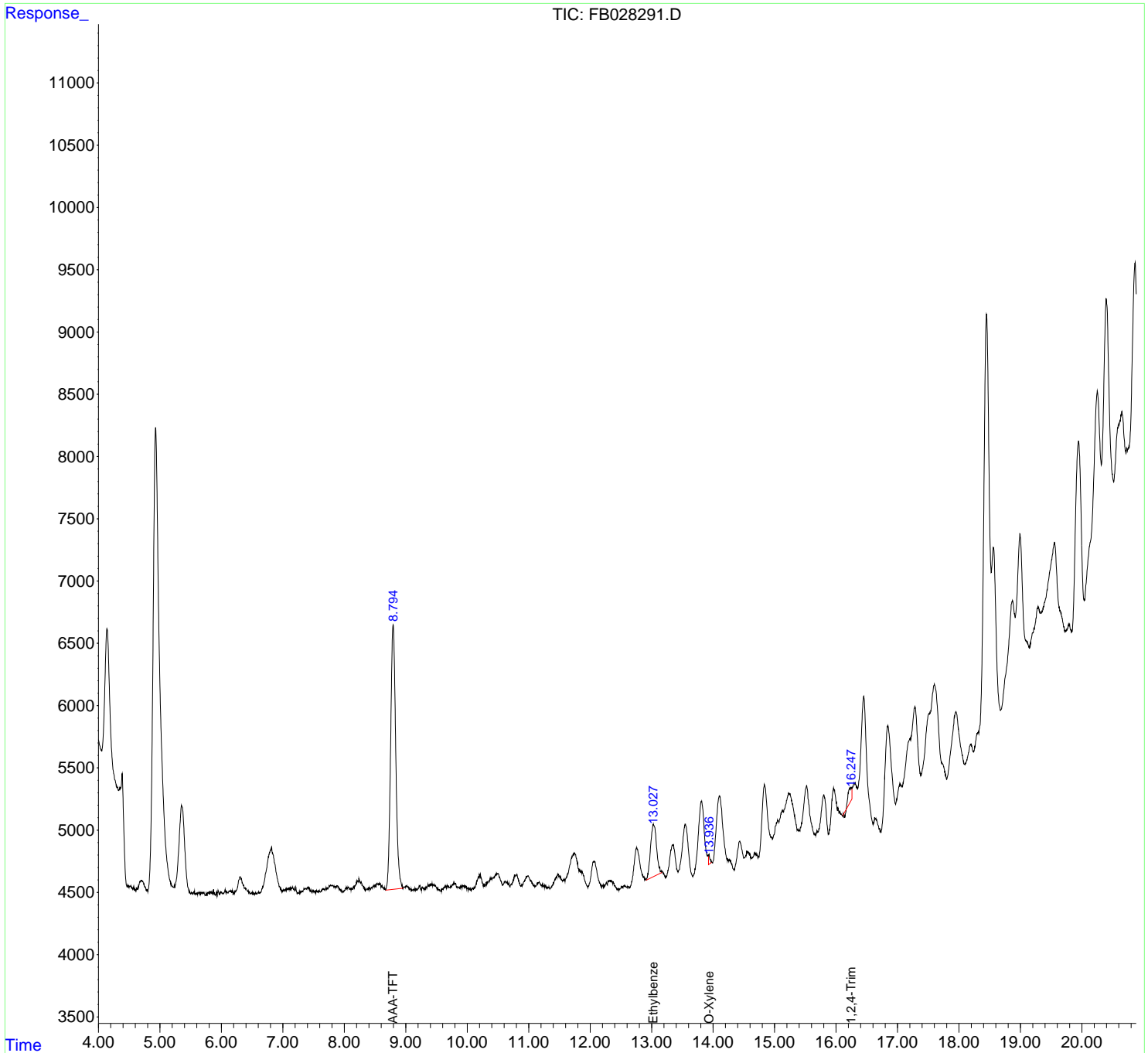
(m)=manual int.

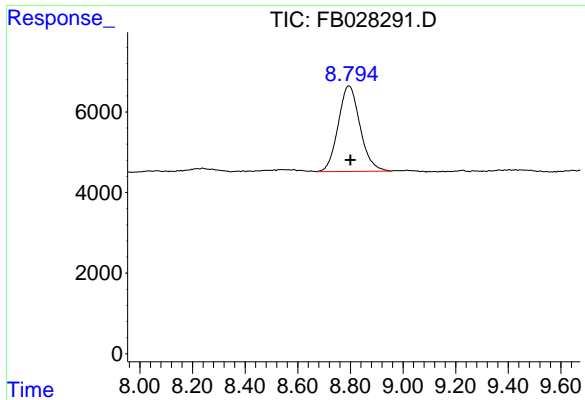
Data Path : Z:\pestpcbsrv\HPCHEM1\FID_B\Data\FB091522\
Data File : FB028291.D
Signal(s) : FID2B.CH
Acq On : 15 Sep 2022 23:51
Operator : AJ/MA
Sample : N4630-19
Misc : 5.04G/5.00 ML DI WATER
ALS Vial : 24 Sample Multiplier: 1

Instrument :
FID_B
ClientSampleId :

Integration File: Calibration.e
Quant Time: Sep 16 05:54:54 2022
Quant Method : Z:\pestpcbsrv\HPCHEM1\FID_B\Method\FB090822.M
Quant Title :
QLast Update : Thu Sep 08 15:28:37 2022
Response via : Initial Calibration
Integrator: ChemStation

Volume Inj. : 5 g/ml
Signal Phase : RTX-502.2
Signal Info : 60mx0.53mmx3.00um

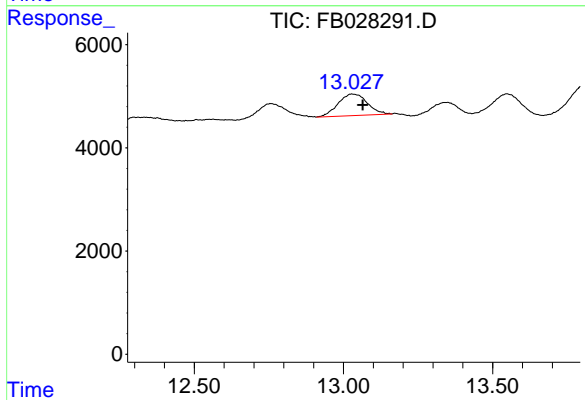




#5 AAA-TFT

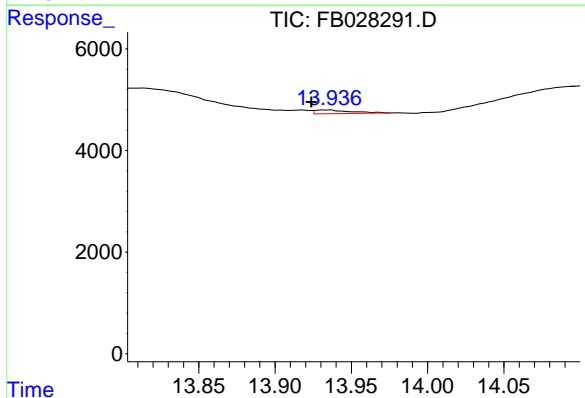
R.T.: 8.796 min
 Delta R.T.: -0.004 min
 Response: 121997
 Conc: 10.19 ng/ml

Instrument :
 FID_B
 ClientSampleId :



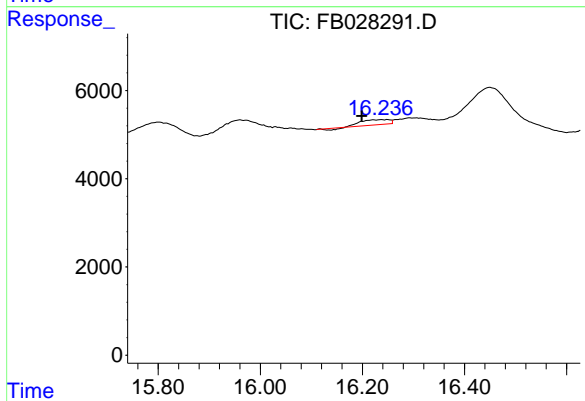
#7 Ethylbenzene

R.T.: 13.029 min
 Delta R.T.: -0.036 min
 Response: 28251
 Conc: 1.27 ng/ml



#9 O-Xylene

R.T.: 13.935 min
 Delta R.T.: 0.011 min
 Response: 1221
 Conc: 0.06 ng/ml



#10 1,2,4-Trimethylbenzene

R.T.: 16.250 min
 Delta R.T.: 0.051 min
 Response: 3919
 Conc: 0.19 ng/ml