

Data Path : Z:\pestpcbsrv\HPCHEM1\FID_B\Data\FB091818\
 Data File : FB017764.D
 Signal(s) : FID2B.CH
 Acq On : 18 Sep 2018 10:48
 Operator : MJ/SJ
 Sample : J4772-01MSD
 Misc : 5.01g/5.00mL DI Water
 ALS Vial : 6 Sample Multiplier: 1

Integration File: Calibration.e
 Quant Time: Sep 18 12:32:25 2018
 Quant Method : Z:\pestpcbsrv\HPCHEM1\FID_B\Method\FB091418.M
 Quant Title :
 QLast Update : Fri Sep 14 13:09:25 2018
 Response via : Initial Calibration
 Integrator: ChemStation

Volume Inj. : 5 g/ml
 Signal Phase : RTX-502.2
 Signal Info : 60mx0.53mmx3.00um

Compound	R.T.	Response	Conc Units

System Monitoring Compounds			
5) s AAA-TFT	9.113	181184	21.419 ng/ml
Target Compounds			
1) t 2-Methylpentane	4.964	422342	26.520 ng/ml
2) t 2,2,4-Trimethylpentane	7.729	397913	25.005 ng/ml
3) t n-Heptane	8.069	125464	8.141 ng/ml
4) t Benzene	8.208	190400	10.002 ng/ml
6) t Toluene	10.962	458793	28.990 ng/ml
7) t Ethylbenzene	13.413	154799	9.474 ng/ml
8) t m-Xylene	13.545	323164	18.680 ng/ml
9) t O-Xylene	14.277	332779	18.313 ng/ml
10) t 1,2,4-Trimethylbenzene	16.560	381694	17.944 ng/ml

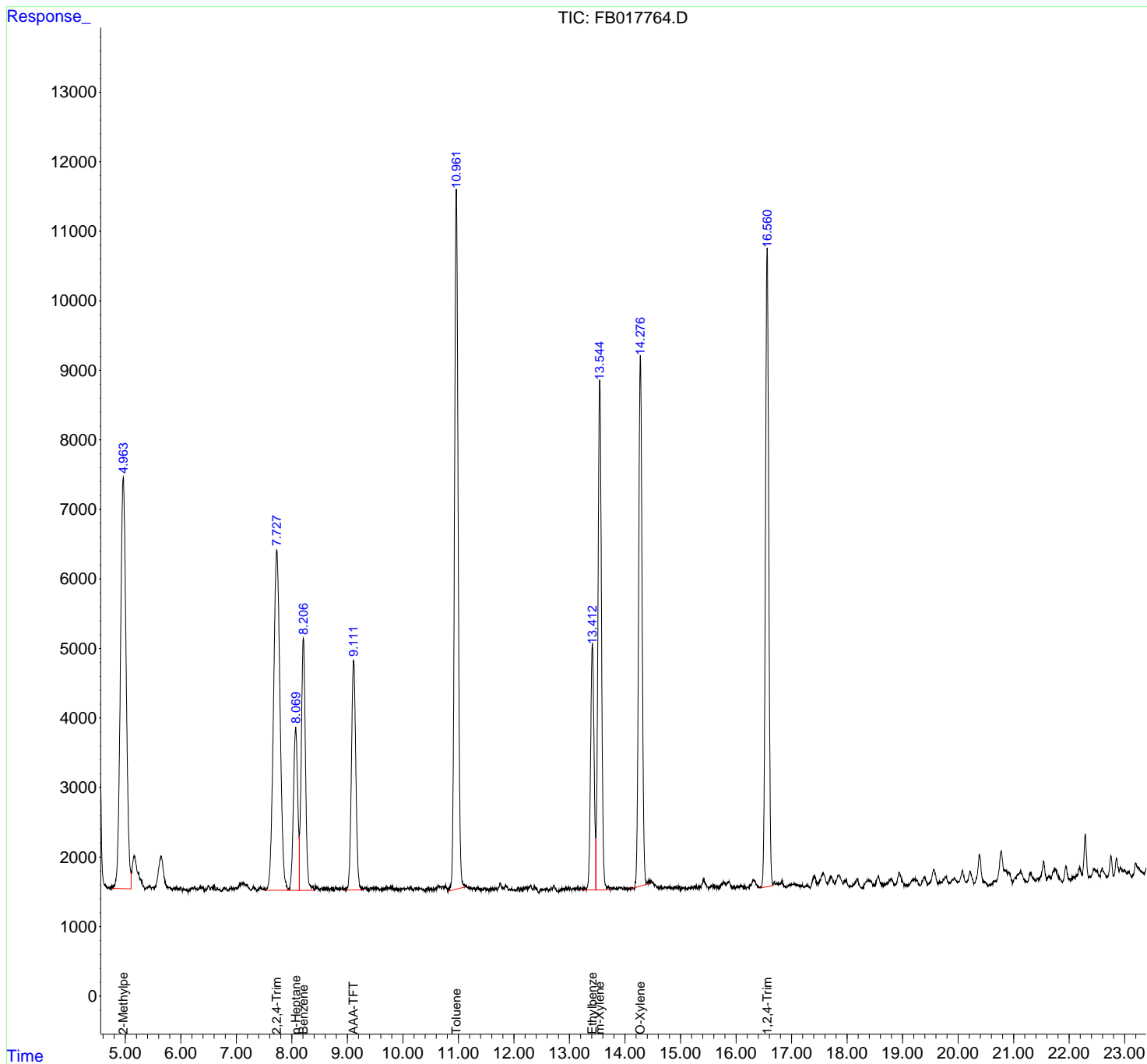
(f)=RT Delta > 1/2 Window

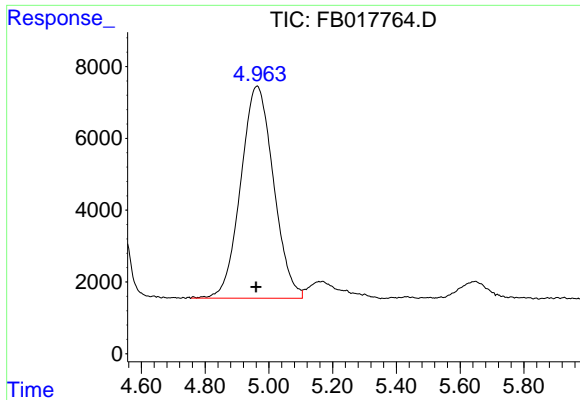
(m)=manual int.

Data Path : Z:\pestpcbsrv\HPCHEM1\FID_B\Data\FB091818\
 Data File : FB017764.D
 Signal(s) : FID2B.CH
 Acq On : 18 Sep 2018 10:48
 Operator : MJ/SJ
 Sample : J4772-01MSD
 Misc : 5.01g/5.00mL DI Water
 ALS Vial : 6 Sample Multiplier: 1

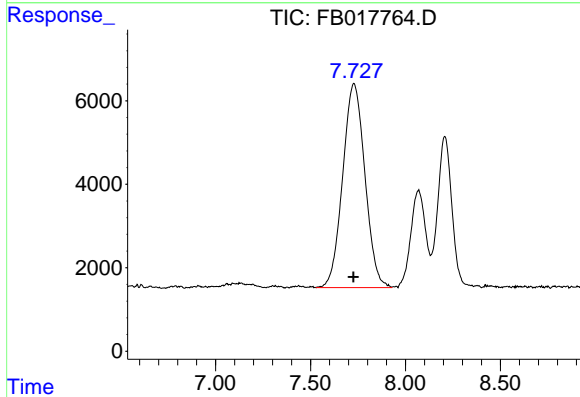
Integration File: Calibration.e
 Quant Time: Sep 18 12:32:25 2018
 Quant Method : Z:\pestpcbsrv\HPCHEM1\FID_B\Method\FB091418.M
 Quant Title :
 QLast Update : Fri Sep 14 13:09:25 2018
 Response via : Initial Calibration
 Integrator: ChemStation

Volume Inj. : 5 g/ml
 Signal Phase : RTX-502.2
 Signal Info : 60mx0.53mmx3.00um

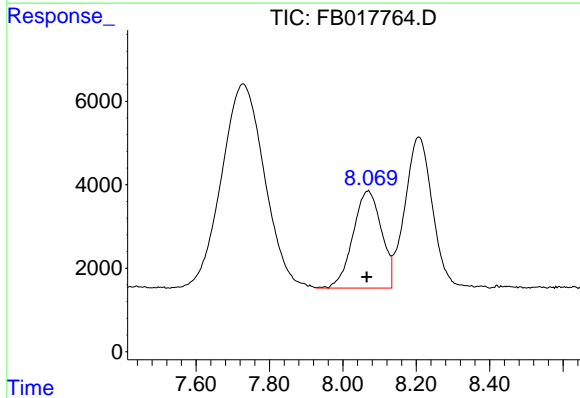




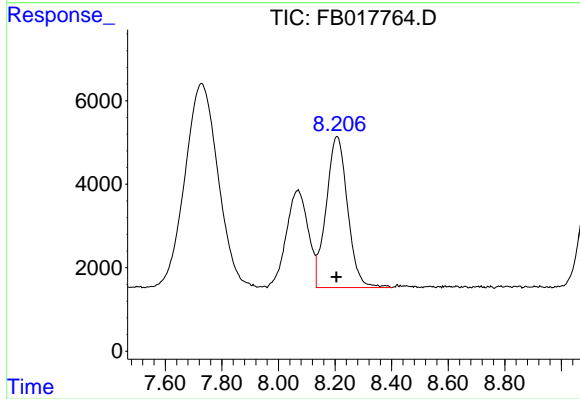
#1 2-Methylpentane
R.T.: 4.964 min
Delta R.T.: 0.004 min
Response: 422342
Conc: 26.52 ng/ml



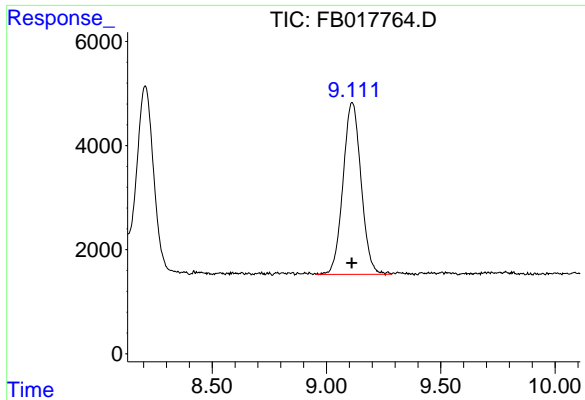
#2 2,2,4-Trimethylpentane
R.T.: 7.729 min
Delta R.T.: 0.002 min
Response: 397913
Conc: 25.00 ng/ml



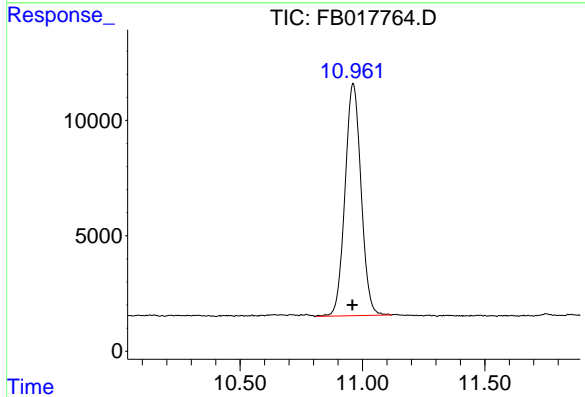
#3 n-Heptane
R.T.: 8.069 min
Delta R.T.: 0.004 min
Response: 125464
Conc: 8.14 ng/ml



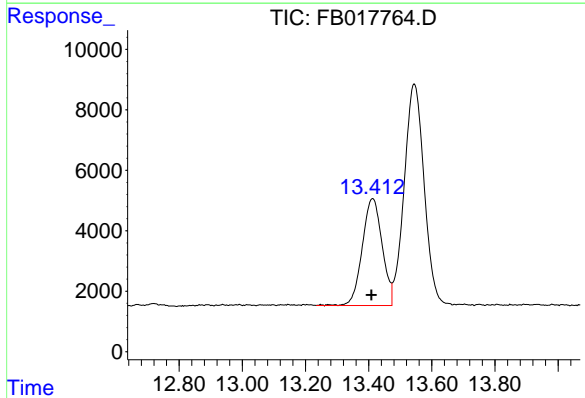
#4 Benzene
R.T.: 8.208 min
Delta R.T.: 0.003 min
Response: 190400
Conc: 10.00 ng/ml



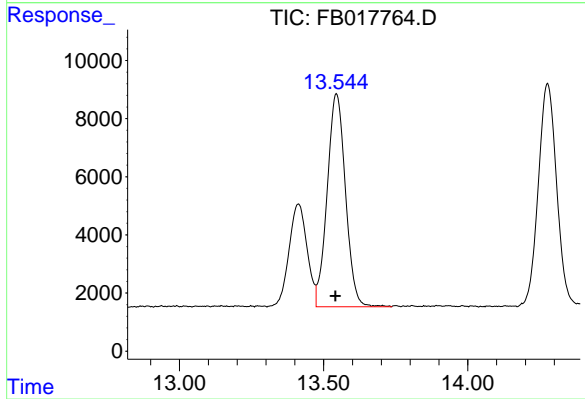
#5 AAA-TFT
 R.T.: 9.113 min
 Delta R.T.: 0.003 min
 Response: 181184
 Conc: 21.42 ng/ml



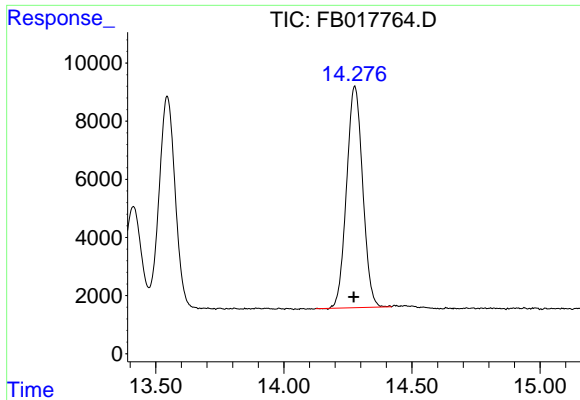
#6 Toluene
 R.T.: 10.962 min
 Delta R.T.: 0.003 min
 Response: 458793
 Conc: 28.99 ng/ml



#7 Ethylbenzene
 R.T.: 13.413 min
 Delta R.T.: 0.004 min
 Response: 154799
 Conc: 9.47 ng/ml

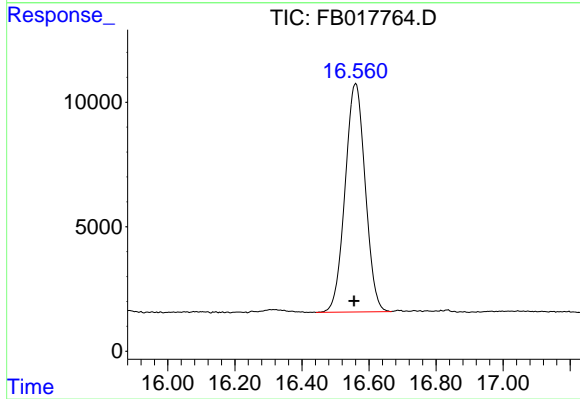


#8 m-Xylene
 R.T.: 13.545 min
 Delta R.T.: 0.004 min
 Response: 323164
 Conc: 18.68 ng/ml



#9 O-Xylene

R.T.: 14.277 min
Delta R.T.: 0.004 min
Response: 332779
Conc: 18.31 ng/ml



#10 1,2,4-Trimethylbenzene

R.T.: 16.560 min
Delta R.T.: 0.005 min
Response: 381694
Conc: 17.94 ng/ml