

Data Path : Z:\pestpcbsrv\HPCHEM1\FID\_B\Data\FB091924\  
 Data File : FB030940.D  
 Signal(s) : FID2B.CH  
 Acq On : 19 Sep 2024 20:46  
 Operator : YP/AJ  
 Sample : P4103-10  
 Misc : 5.06G/5.00 ML DI WATER  
 ALS Vial : 18 Sample Multiplier: 1

Instrument :  
 FID\_B  
 ClientSampleId :  
 WC-14-7.5-10A

Integration File: Calibration.e  
 Quant Time: Sep 20 01:55:47 2024  
 Quant Method : Z:\pestpcbsrv\HPCHEM1\FID\_B\Method\FB082724.M  
 Quant Title :  
 QLast Update : Tue Aug 27 11:54:45 2024  
 Response via : Initial Calibration  
 Integrator: ChemStation

Volume Inj. : 5 g/ml  
 Signal Phase : RTX-502.2  
 Signal Info : 60mx0.53mmx3.00um

Compound	R.T.	Response	Conc Units
-----			
System Monitoring Compounds			
5) s AAA-TFT	8.843	8971	0.741 ng/ml
Target Compounds			
1) t 2-Methylpentane	4.693	31419	1.758 ng/ml
2) t 2,2,4-Trimethylpentane	7.406	11630	0.634 ng/ml
-----			

(f)=RT Delta > 1/2 Window

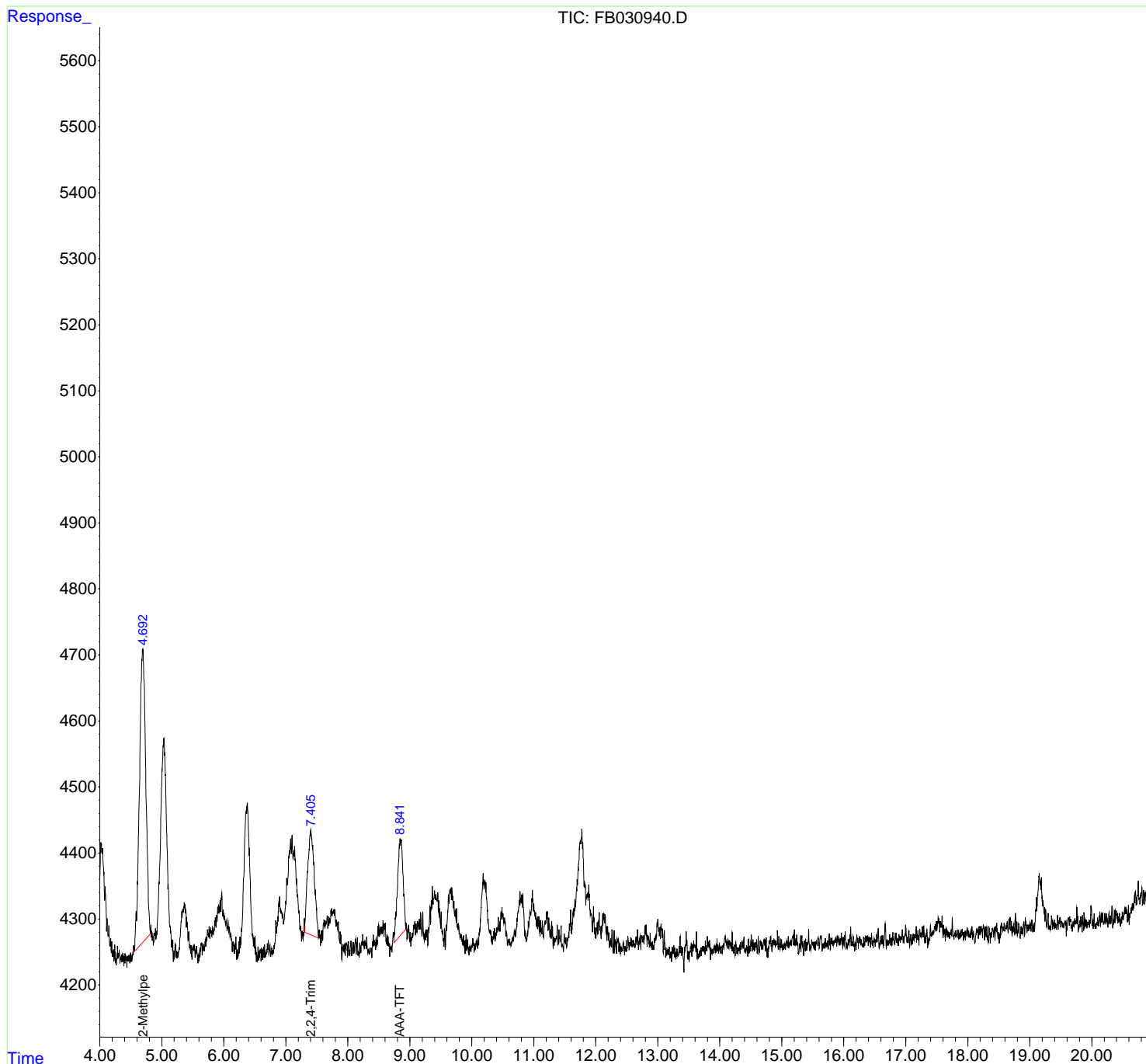
(m)=manual int.

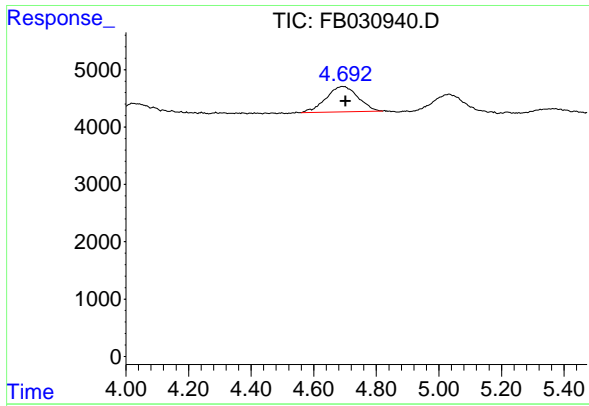
Data Path : Z:\pestpcbsrv\HPCHEM1\FID\_B\Data\FB091924\  
 Data File : FB030940.D  
 Signal(s) : FID2B.CH  
 Acq On : 19 Sep 2024 20:46  
 Operator : YP/AJ  
 Sample : P4103-10  
 Misc : 5.06G/5.00 ML DI WATER  
 ALS Vial : 18 Sample Multiplier: 1

Instrument :  
 FID\_B  
 ClientSampleId :  
 WC-14-7.5-10A

Integration File: Calibration.e  
 Quant Time: Sep 20 01:55:47 2024  
 Quant Method : Z:\pestpcbsrv\HPCHEM1\FID\_B\Method\FB082724.M  
 Quant Title :  
 QLast Update : Tue Aug 27 11:54:45 2024  
 Response via : Initial Calibration  
 Integrator: ChemStation

Volume Inj. : 5 g/ml  
 Signal Phase : RTX-502.2  
 Signal Info : 60mx0.53mmx3.00um

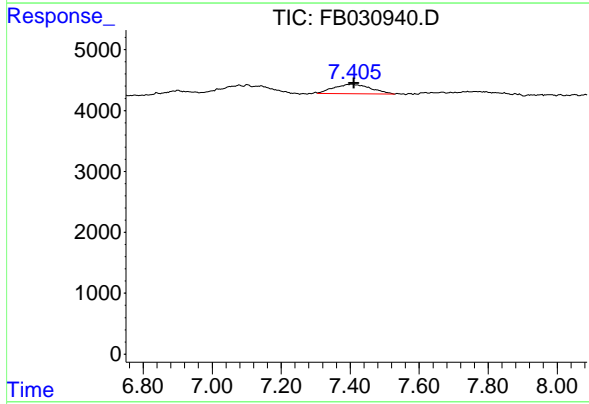




#1 2-Methylpentane

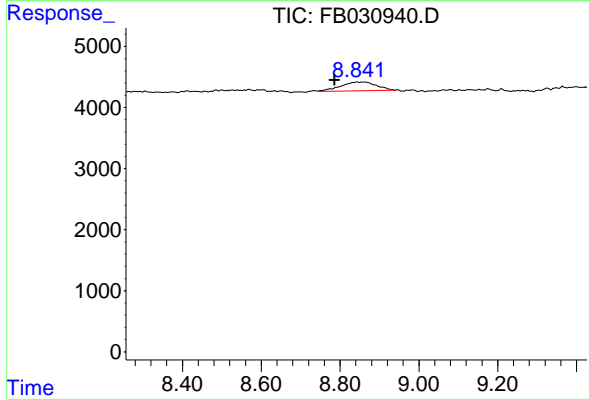
R.T.: 4.693 min  
 Delta R.T.: -0.009 min  
 Response: 31419  
 Conc: 1.76 ng/ml

Instrument : FID\_B  
 ClientSampleId : WC-14-7.5-10A



#2 2,2,4-Trimethylpentane

R.T.: 7.406 min  
 Delta R.T.: -0.005 min  
 Response: 11630  
 Conc: 0.63 ng/ml



#5 AAA-TFT

R.T.: 8.843 min  
 Delta R.T.: 0.057 min  
 Response: 8971  
 Conc: 0.74 ng/ml