

Data Path : Z:\pestpcbsrv\HPCHEM1\FID\_B\Data\FB091924\  
 Data File : FB030928.D  
 Signal(s) : FID2B.CH  
 Acq On : 19 Sep 2024 11:05  
 Operator : YP/AJ  
 Sample : BSF0919S1  
 Misc : 5.00G/5.00 ML DI WATER  
 ALS Vial : 4 Sample Multiplier: 1

**Instrument :**  
 FID\_B  
**ClientSampleId :**  
 BSF0919S1

**Manual Integrations**  
**APPROVED**  
 Reviewed By :Yogesh Patel 09/20/2024  
 Supervised By :Ankita Jodhani 09/20/2024

Integration File: Calibration.e  
 Quant Time: Sep 20 01:54:31 2024  
 Quant Method : Z:\pestpcbsrv\HPCHEM1\FID\_B\Method\FB082724.M  
 Quant Title :  
 QLast Update : Tue Aug 27 11:54:45 2024  
 Response via : Initial Calibration  
 Integrator: ChemStation

Volume Inj. : 5 g/ml  
 Signal Phase : RTX-502.2  
 Signal Info : 60mx0.53mmx3.00um

Compound	R.T.	Response	Conc Units
-----			
System Monitoring Compounds			
5) s AAA-TFT	8.788	243379	20.116 ng/ml
Target Compounds			
1) t 2-Methylpentane	4.704	536990	30.051 ng/ml
2) t 2,2,4-Trimethylpentane	7.414	521543	28.445 ng/ml
3) t n-Heptane	7.747	188912	10.215 ng/ml
4) t Benzene	7.884	222059	9.829 ng/ml
6) t Toluene	10.616	643471	29.462 ng/ml
7) t Ethylbenzene	13.050	199303	9.521 ng/mlm
8) t m-Xylene	13.184	398363	19.199 ng/ml
9) t O-Xylene	13.911	381614	18.935 ng/ml
10) t 1,2,4-Trimethylbenzene	16.186	369933	18.540 ng/ml
-----			

(f)=RT Delta > 1/2 Window

(m)=manual int.

Data Path : Z:\pestpcbsrv\HPCHEM1\FID\_B\Data\FB091924\  
 Data File : FB030928.D  
 Signal(s) : FID2B.CH  
 Acq On : 19 Sep 2024 11:05  
 Operator : YP/AJ  
 Sample : BSF0919S1  
 Misc : 5.00G/5.00 ML DI WATER  
 ALS Vial : 4 Sample Multiplier: 1

**Instrument :**

FID\_B

**ClientSampleId :**

BSF0919S1

**Manual Integrations**

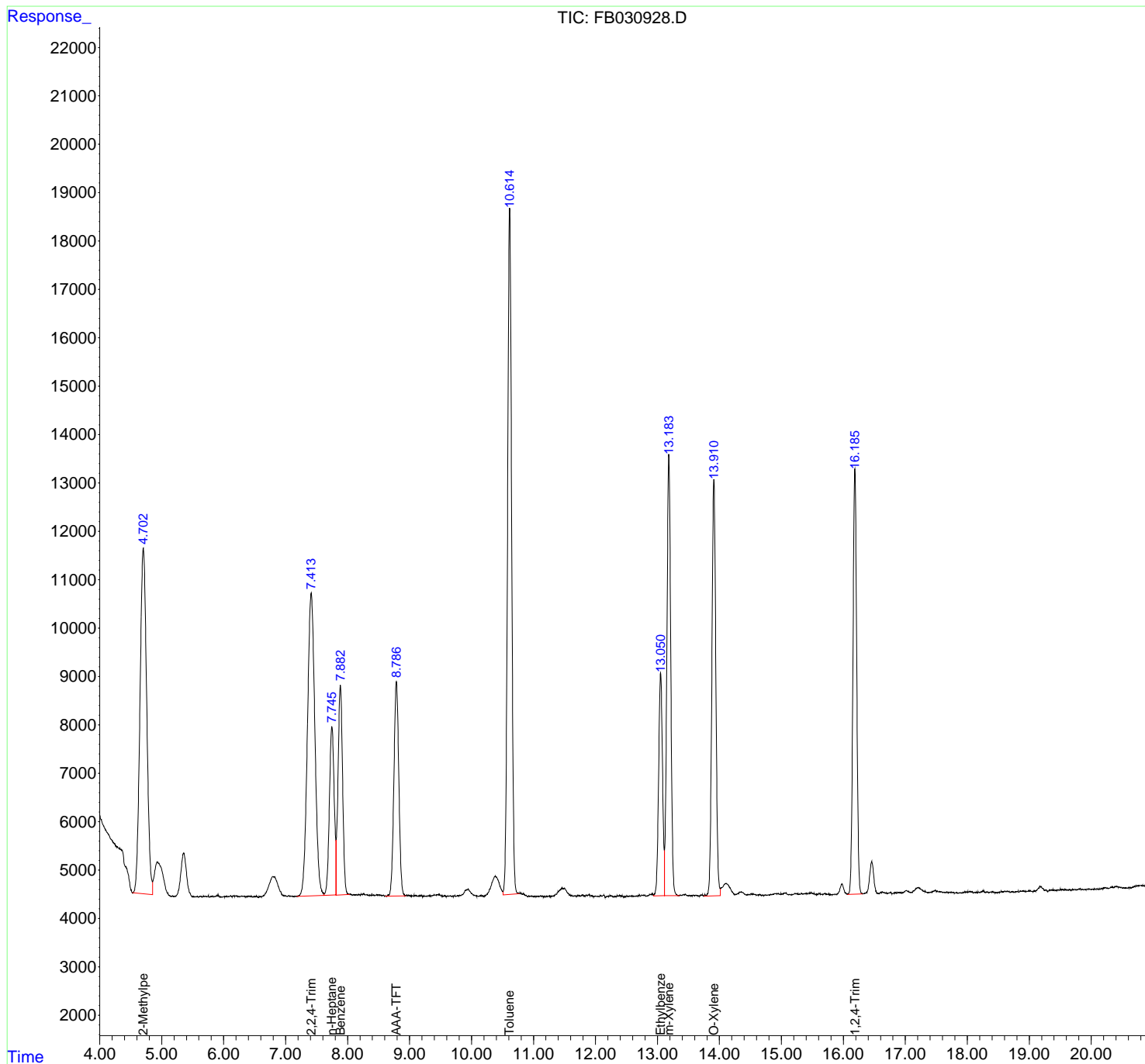
**APPROVED**

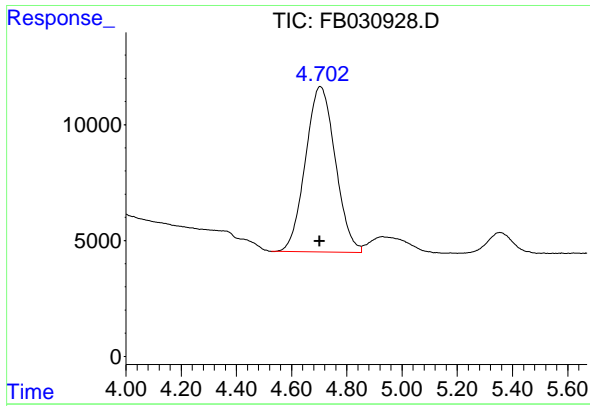
Reviewed By :Yogesh Patel 09/20/2024

Supervised By :Ankita Jodhani 09/20/2024

Integration File: Calibration.e  
 Quant Time: Sep 20 01:54:31 2024  
 Quant Method : Z:\pestpcbsrv\HPCHEM1\FID\_B\Method\FB082724.M  
 Quant Title :  
 QLast Update : Tue Aug 27 11:54:45 2024  
 Response via : Initial Calibration  
 Integrator: ChemStation

Volume Inj. : 5 g/ml  
 Signal Phase : RTX-502.2  
 Signal Info : 60mx0.53mmx3.00um





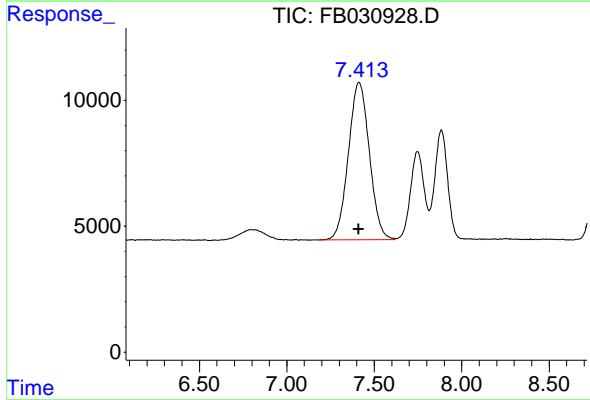
#1 2-Methylpentane

R.T.: 4.704 min  
 Delta R.T.: 0.002 min  
 Response: 536990  
 Conc: 30.05 ng/ml

Instrument : FID\_B  
 Client Sample Id : BSF0919S1

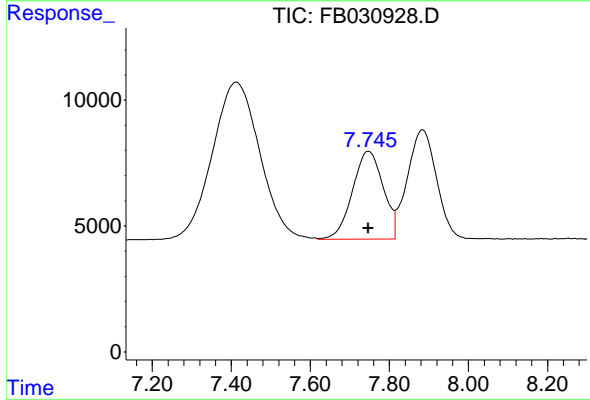
Manual Integrations  
 APPROVED

Reviewed By :Yogesh Patel 09/20/2024  
 Supervised By :Ankita Jodhani 09/20/2024



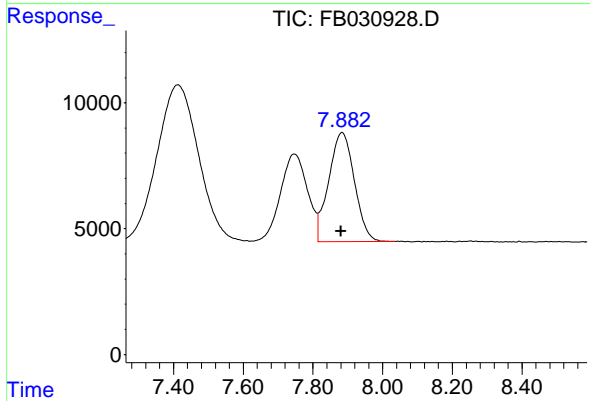
#2 2,2,4-Trimethylpentane

R.T.: 7.414 min  
 Delta R.T.: 0.003 min  
 Response: 521543  
 Conc: 28.45 ng/ml



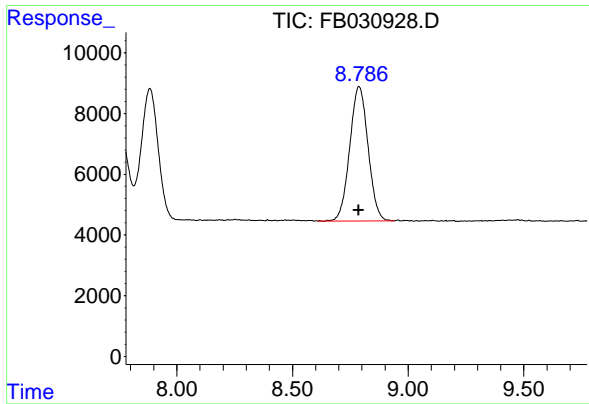
#3 n-Heptane

R.T.: 7.747 min  
 Delta R.T.: 0.000 min  
 Response: 188912  
 Conc: 10.21 ng/ml



#4 Benzene

R.T.: 7.884 min  
 Delta R.T.: 0.003 min  
 Response: 222059  
 Conc: 9.83 ng/ml



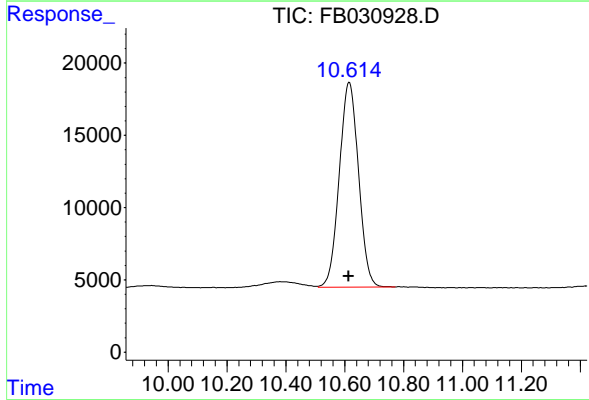
#5 AAA-TFT

R.T.: 8.788 min  
 Delta R.T.: 0.002 min  
 Response: 243379  
 Conc: 20.12 ng/ml

Instrument : FID\_B  
 Client Sample Id : BSF0919S1

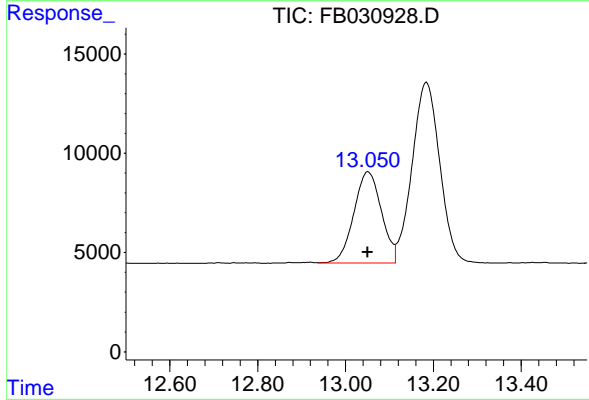
Manual Integrations  
 APPROVED

Reviewed By :Yogesh Patel 09/20/2024  
 Supervised By :Ankita Jodhani 09/20/2024



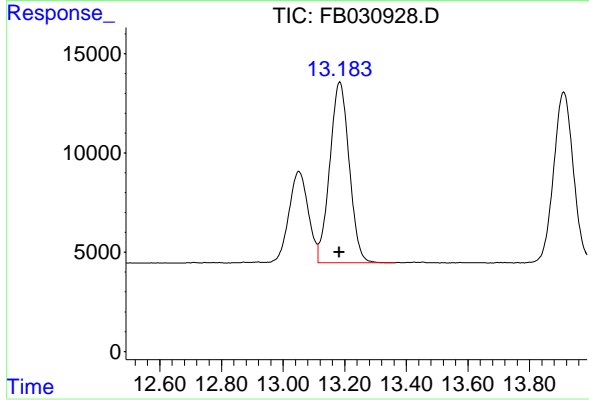
#6 Toluene

R.T.: 10.616 min  
 Delta R.T.: 0.001 min  
 Response: 643471  
 Conc: 29.46 ng/ml



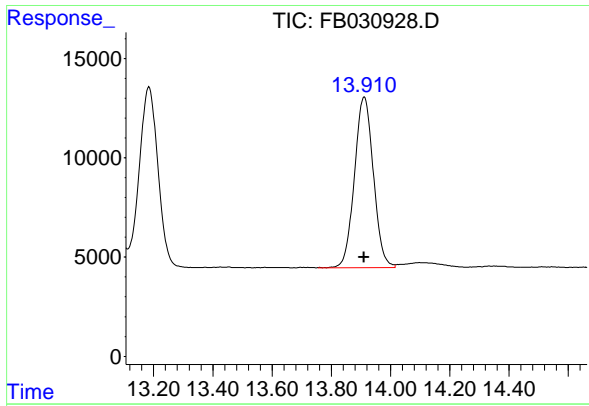
#7 Ethylbenzene

R.T.: 13.050 min  
 Delta R.T.: 0.000 min  
 Response: 199303  
 Conc: 9.52 ng/ml m



#8 m-Xylene

R.T.: 13.184 min  
 Delta R.T.: 0.002 min  
 Response: 398363  
 Conc: 19.20 ng/ml



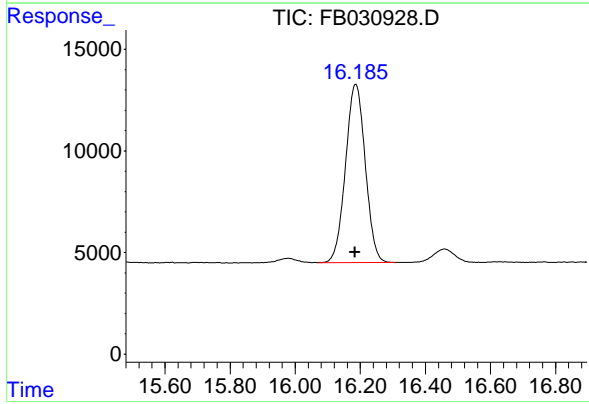
#9 O-Xylene

R.T.: 13.911 min  
 Delta R.T.: 0.002 min  
 Response: 381614  
 Conc: 18.93 ng/ml

Instrument : FID\_B  
 Client Sample Id : BSF0919S1

Manual Integrations  
 APPROVED

Reviewed By :Yogesh Patel 09/20/2024  
 Supervised By :Ankita Jodhani 09/20/2024



#10 1,2,4-Trimethylbenzene

R.T.: 16.186 min  
 Delta R.T.: 0.002 min  
 Response: 369933  
 Conc: 18.54 ng/ml