

Data Path : Z:\pestpcbsrv\HPCHEM1\FID_B\Data\FB092018\
 Data File : FB017821.D
 Signal(s) : FID2B.CH
 Acq On : 20 Sep 2018 11:50
 Operator : MJ/SJ
 Sample : J4778-01
 Misc : 5.02g/5.00mL DI Water
 ALS Vial : 7 Sample Multiplier: 1

Integration File: Calibration.e
 Quant Time: Sep 20 14:06:00 2018
 Quant Method : Z:\pestpcbsrv\HPCHEM1\FID_B\Method\FB091418.M
 Quant Title :
 QLast Update : Fri Sep 14 13:09:25 2018
 Response via : Initial Calibration
 Integrator: ChemStation

Volume Inj. : 5 g/ml
 Signal Phase : RTX-502.2
 Signal Info : 60mx0.53mmx3.00um

| Compound | R.T. | Response | Conc Units |
|-----------------------------|-------|----------|--------------|
| ----- | | | |
| System Monitoring Compounds | | | |
| 5) s AAA-TFT | 9.107 | 165751 | 19.595 ng/ml |
| Target Compounds | | | |
| ----- | | | |

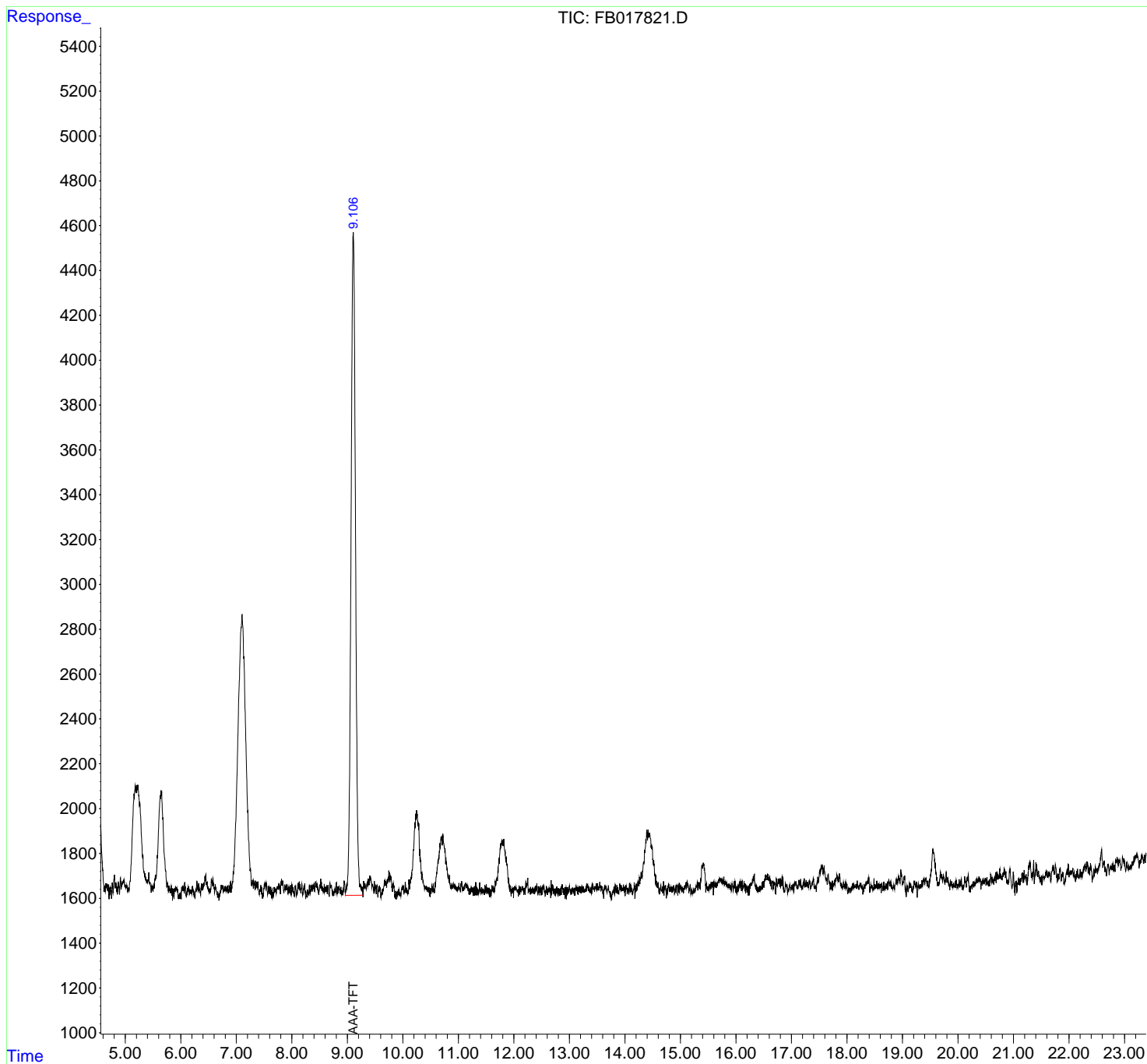
(f)=RT Delta > 1/2 Window

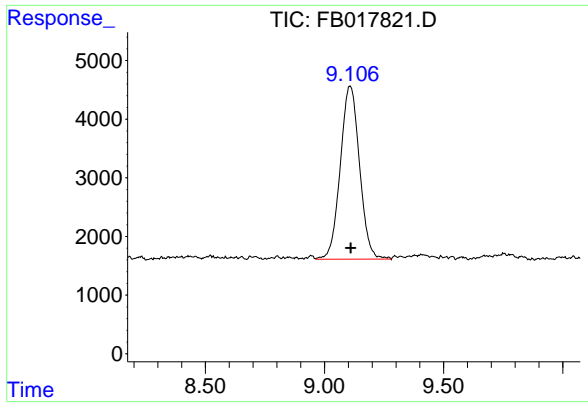
(m)=manual int.

Data Path : Z:\pestpcbsrv\HPCHEM1\FID_B\Data\FB092018\
 Data File : FB017821.D
 Signal(s) : FID2B.CH
 Acq On : 20 Sep 2018 11:50
 Operator : MJ/SJ
 Sample : J4778-01
 Misc : 5.02g/5.00mL DI Water
 ALS Vial : 7 Sample Multiplier: 1

Integration File: Calibration.e
 Quant Time: Sep 20 14:06:00 2018
 Quant Method : Z:\pestpcbsrv\HPCHEM1\FID_B\Method\FB091418.M
 Quant Title :
 QLast Update : Fri Sep 14 13:09:25 2018
 Response via : Initial Calibration
 Integrator: ChemStation

Volume Inj. : 5 g/ml
 Signal Phase : RTX-502.2
 Signal Info : 60mx0.53mmx3.00um





#5 AAA-TFT
R.T.: 9.107 min
Delta R.T.: -0.003 min
Response: 165751
Conc: 19.59 ng/ml