

Data Path : Z:\pestpcbsrv\HPCHEM1\FID_B\Data\FB092022\
Data File : FB028335.D
Signal(s) : FID2B.CH
Acq On : 20 Sep 2022 22:05
Operator : AJ/MA
Sample : N4697-14
Misc : 5.00G/5.00 ML DI WATER
ALS Vial : 22 Sample Multiplier: 1

Instrument :
FID_B
ClientSampleId :
SB-19-COMP

Integration File: Calibration.e
Quant Time: Sep 21 05:51:53 2022
Quant Method : Z:\pestpcbsrv\HPCHEM1\FID_B\Method\FB090822.M
Quant Title :
QLast Update : Thu Sep 08 15:28:37 2022
Response via : Initial Calibration
Integrator: ChemStation

Volume Inj. : 5 g/ml
Signal Phase : RTX-502.2
Signal Info : 60mx0.53mmx3.00um

Compound	R.T.	Response	Conc Units

System Monitoring Compounds			
Target Compounds			

(f)=RT Delta > 1/2 Window

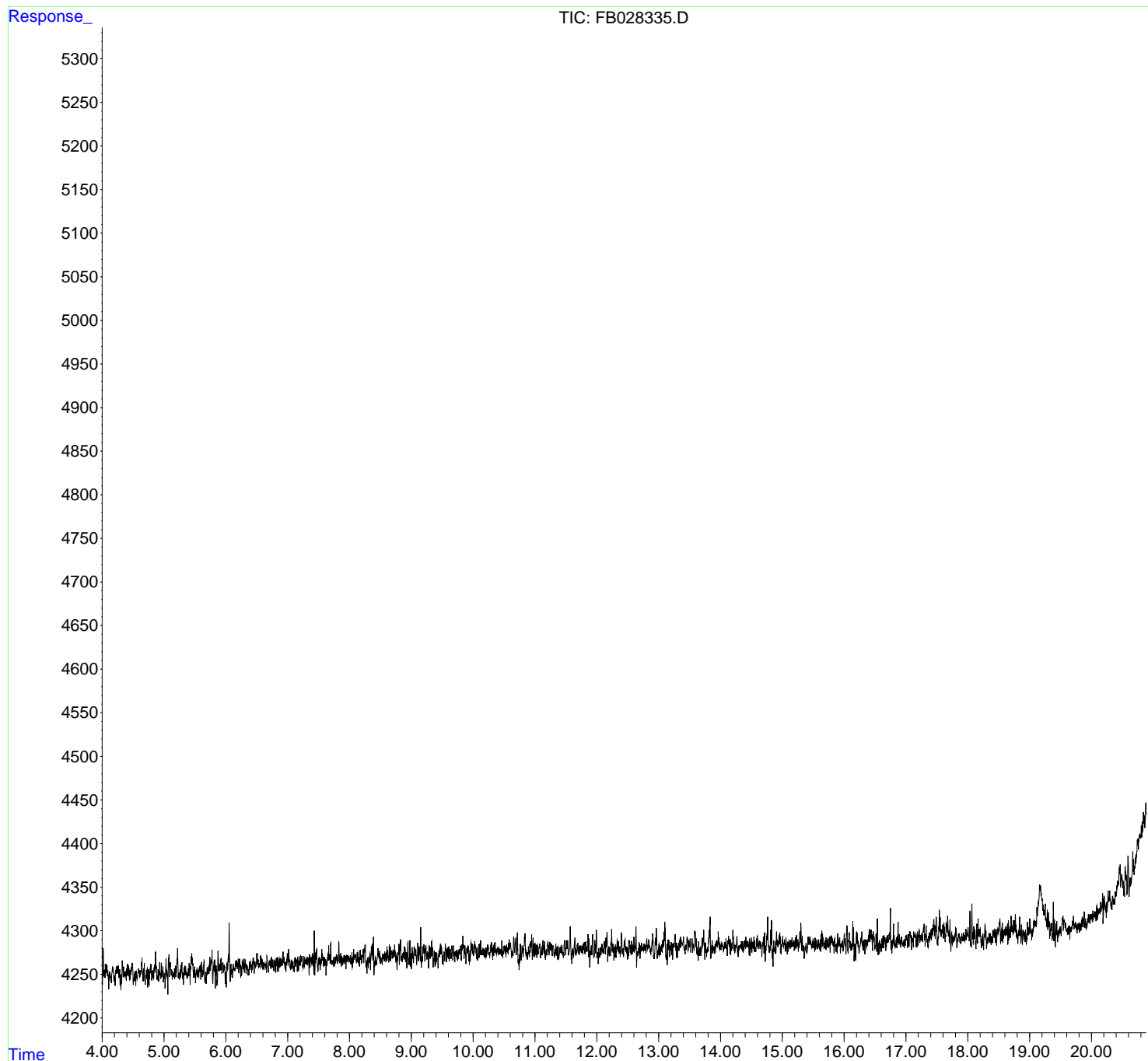
(m)=manual int.

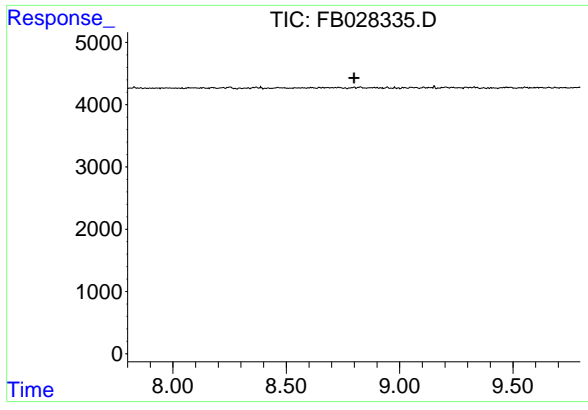
Data Path : Z:\pestpcbsrv\HPCHEM1\FID_B\Data\FB092022\
Data File : FB028335.D
Signal(s) : FID2B.CH
Acq On : 20 Sep 2022 22:05
Operator : AJ/MA
Sample : N4697-14
Misc : 5.00G/5.00 ML DI WATER
ALS Vial : 22 Sample Multiplier: 1

Instrument :
FID_B
ClientSampleId :
SB-19-COMP

Integration File: Calibration.e
Quant Time: Sep 21 05:51:53 2022
Quant Method : Z:\pestpcbsrv\HPCHEM1\FID_B\Method\FB090822.M
Quant Title :
QLast Update : Thu Sep 08 15:28:37 2022
Response via : Initial Calibration
Integrator: ChemStation

Volume Inj. : 5 g/ml
Signal Phase : RTX-502.2
Signal Info : 60mx0.53mmx3.00um





#5 AAA-TFT

R.T.: 0.000 min
Exp R.T.: 8.800 min
Response: 0
Conc: N.D.

Instrument : FID_B
ClientSampleId : SB-19-COMP