

Data Path : Z:\pestpcbsrv\HPCHEM1\FID_B\Data\FB092118\
Data File : FB017888.D
Signal(s) : FID2B.CH
Acq On : 22 Sep 2018 4:59
Operator : MJ/SJ
Sample : J4770-17
Misc : 5.02g/5.00mL DI Water
ALS Vial : 38 Sample Multiplier: 1

Instrument :
FID_B
ClientSampleId :

Integration File: Calibration.e
Quant Time: Sep 24 09:42:56 2018
Quant Method : Z:\pestpcbsrv\HPCHEM1\FID_B\Method\FB091418.M
Quant Title :
QLast Update : Fri Sep 14 13:09:25 2018
Response via : Initial Calibration
Integrator: ChemStation

Volume Inj. : 5 g/ml
Signal Phase : RTX-502.2
Signal Info : 60mx0.53mmx3.00um

Compound	R.T.	Response	Conc Units

System Monitoring Compounds			
5) s AAA-TFT	9.109	132990	15.722 ng/ml
Target Compounds			

(f)=RT Delta > 1/2 Window

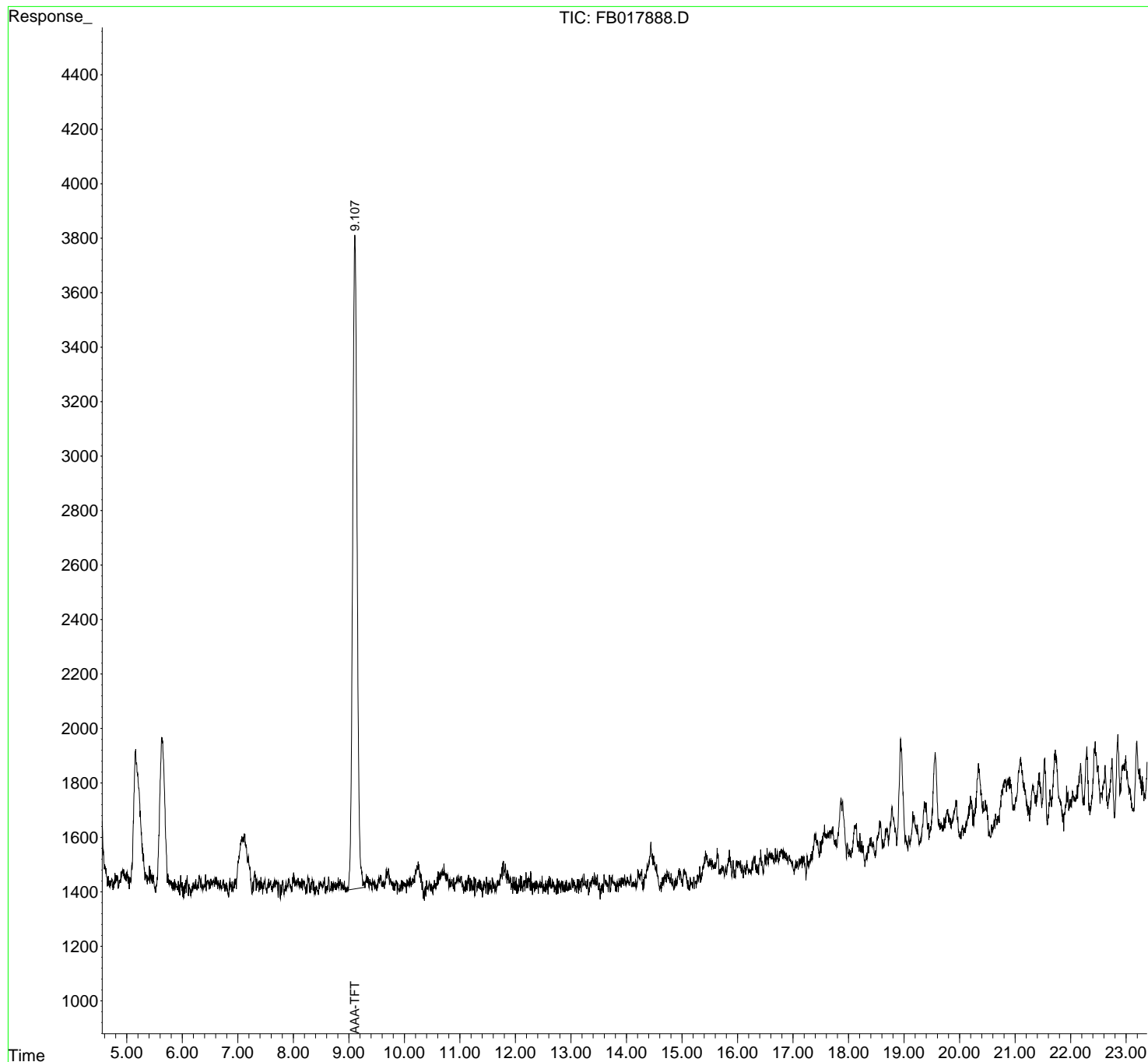
(m)=manual int.

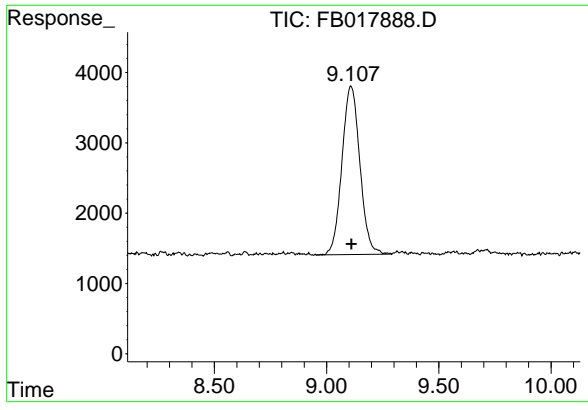
Data Path : Z:\pestpcbsrv\HPCHEM1\FID_B\Data\FB092118\
 Data File : FB017888.D
 Signal(s) : FID2B.CH
 Acq On : 22 Sep 2018 4:59
 Operator : MJ/SJ
 Sample : J4770-17
 Misc : 5.02g/5.00mL DI Water
 ALS Vial : 38 Sample Multiplier: 1

Instrument :
 FID_B
 ClientSampleId :

Integration File: Calibration.e
 Quant Time: Sep 24 09:42:56 2018
 Quant Method : Z:\pestpcbsrv\HPCHEM1\FID_B\Method\FB091418.M
 Quant Title :
 QLast Update : Fri Sep 14 13:09:25 2018
 Response via : Initial Calibration
 Integrator: ChemStation

Volume Inj. : 5 g/ml
 Signal Phase : RTX-502.2
 Signal Info : 60mx0.53mmx3.00um





#5 AAA-TFT

R.T.: 9.109 min
Delta R.T.: -0.001 min
Response: 132990
Conc: 15.72 ng/ml

Instrument :
FID_B
ClientSampleId :