

Data Path : Z:\pestpcbsrv\HPCHEM1\FID\_B\Data\FB092322\  
 Data File : FB028400.D  
 Signal(s) : FID2B.CH  
 Acq On : 23 Sep 2022 9:21  
 Operator : AJ/MA  
 Sample : 20 PPB GRO STD  
 Misc :  
 ALS Vial : 1 Sample Multiplier: 1

Instrument :  
 FID\_B  
 ClientSampleId :  
 20 PPB GRO STD

Integration File: Calibration.e  
 Quant Time: Sep 24 15:39:50 2022  
 Quant Method : Z:\pestpcbsrv\HPCHEM1\FID\_B\Method\FB090822.M  
 Quant Title :  
 QLast Update : Thu Sep 08 15:28:37 2022  
 Response via : Initial Calibration  
 Integrator: ChemStation

Volume Inj. : 5 g/ml  
 Signal Phase : RTX-502.2  
 Signal Info : 60mx0.53mmx3.00um

Compound	R.T.	Response	Conc Units
-----			
System Monitoring Compounds			
5) s AAA-TFT	8.789	233997	19.551 ng/ml
Target Compounds			
1) t 2-Methylpentane	4.709	620291	30.636 ng/ml
2) t 2,2,4-Trimethylpentane	7.418	674780	32.077 ng/ml
3) t n-Heptane	7.747	206246	9.594 ng/ml
4) t Benzene	7.884	245484	9.979 ng/ml
6) t Toluene	10.617	705822	30.317 ng/ml
7) t Ethylbenzene	13.054	219524	9.871 ng/ml
8) t m-Xylene	13.187	438778	20.107 ng/ml
9) t O-Xylene	13.914	439077	20.956 ng/ml
10) t 1,2,4-Trimethylbenzene	16.189	442217	21.993 ng/ml

(f)=RT Delta > 1/2 Window

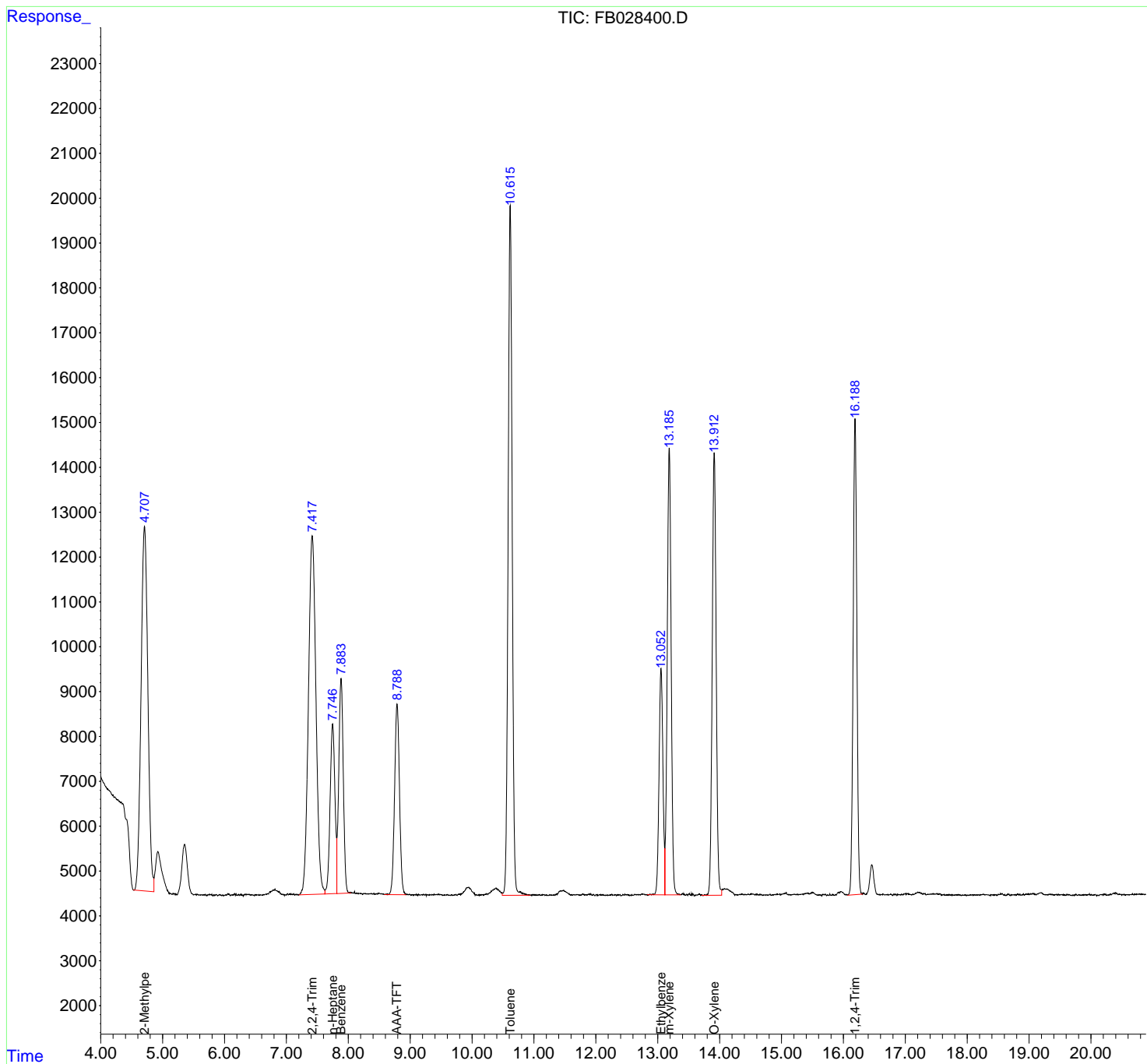
(m)=manual int.

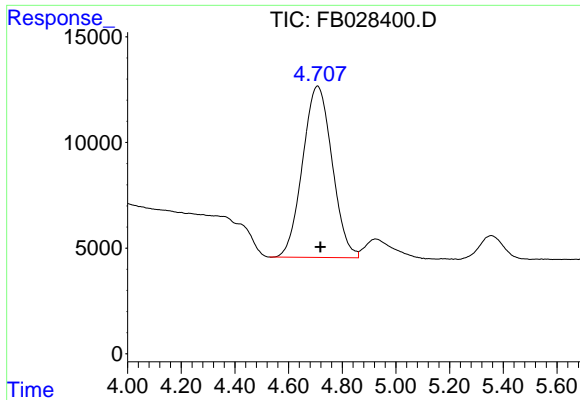
Data Path : Z:\pestpcbsrv\HPCHEM1\FID\_B\Data\FB092322\  
 Data File : FB028400.D  
 Signal(s) : FID2B.CH  
 Acq On : 23 Sep 2022 9:21  
 Operator : AJ/MA  
 Sample : 20 PPB GRO STD  
 Misc :  
 ALS Vial : 1 Sample Multiplier: 1

Instrument :  
 FID\_B  
 ClientSampleId :  
 20 PPB GRO STD

Integration File: Calibration.e  
 Quant Time: Sep 24 15:39:50 2022  
 Quant Method : Z:\pestpcbsrv\HPCHEM1\FID\_B\Method\FB090822.M  
 Quant Title :  
 QLast Update : Thu Sep 08 15:28:37 2022  
 Response via : Initial Calibration  
 Integrator: ChemStation

Volume Inj. : 5 g/ml  
 Signal Phase : RTX-502.2  
 Signal Info : 60mx0.53mmx3.00um

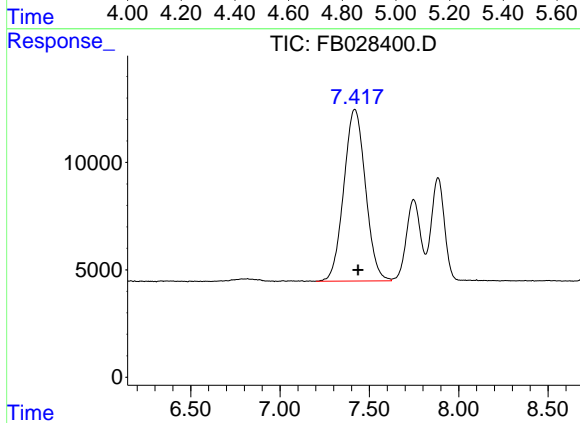




#1 2-Methylpentane

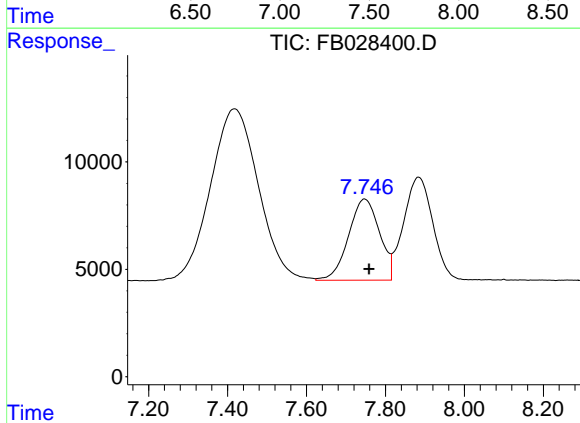
R.T.: 4.709 min  
 Delta R.T.: -0.009 min  
 Response: 620291  
 Conc: 30.64 ng/ml

Instrument :  
 FID\_B  
 ClientSampleId :  
 20 PPB GRO STD



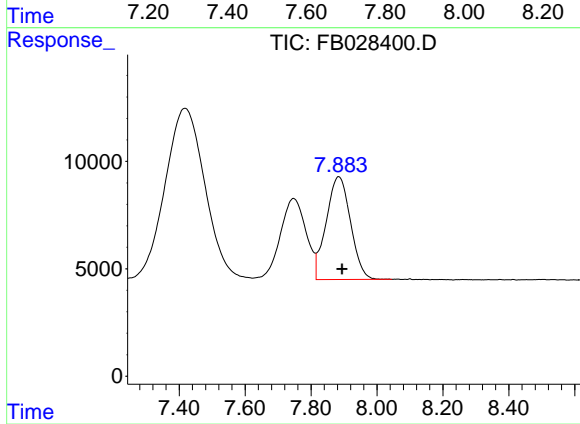
#2 2,2,4-Trimethylpentane

R.T.: 7.418 min  
 Delta R.T.: -0.019 min  
 Response: 674780  
 Conc: 32.08 ng/ml



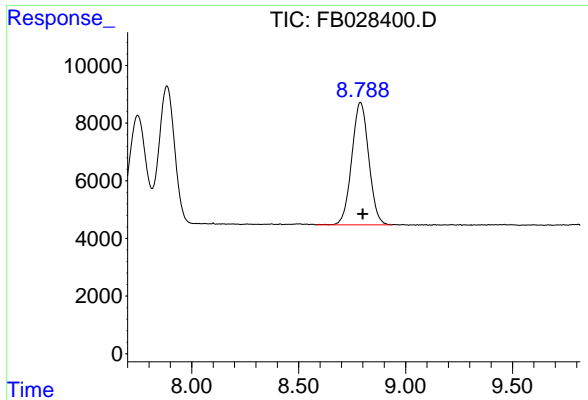
#3 n-Heptane

R.T.: 7.747 min  
 Delta R.T.: -0.011 min  
 Response: 206246  
 Conc: 9.59 ng/ml



#4 Benzene

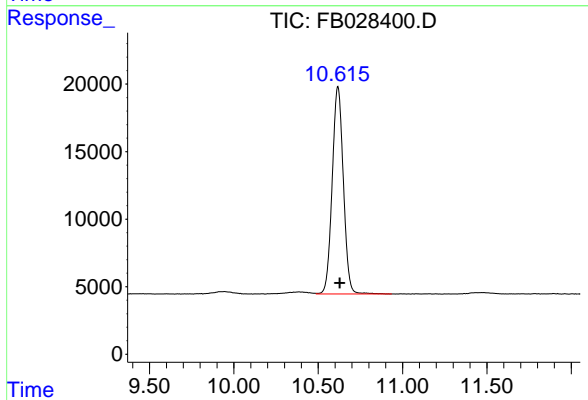
R.T.: 7.884 min  
 Delta R.T.: -0.010 min  
 Response: 245484  
 Conc: 9.98 ng/ml



#5 AAA-TFT

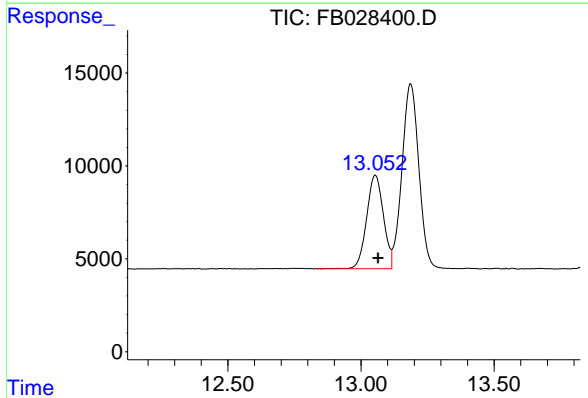
R.T.: 8.789 min  
 Delta R.T.: -0.011 min  
 Response: 233997  
 Conc: 19.55 ng/ml

Instrument :  
 FID\_B  
 ClientSampleId :  
 20 PPB GRO STD



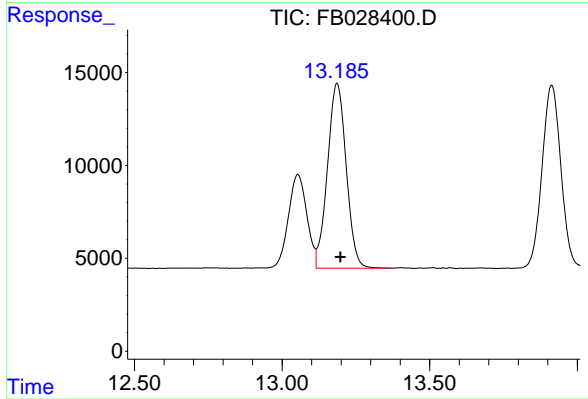
#6 Toluene

R.T.: 10.617 min  
 Delta R.T.: -0.011 min  
 Response: 705822  
 Conc: 30.32 ng/ml



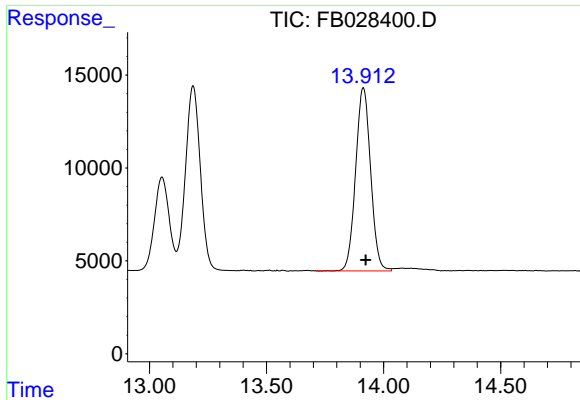
#7 Ethylbenzene

R.T.: 13.054 min  
 Delta R.T.: -0.011 min  
 Response: 219524  
 Conc: 9.87 ng/ml



#8 m-Xylene

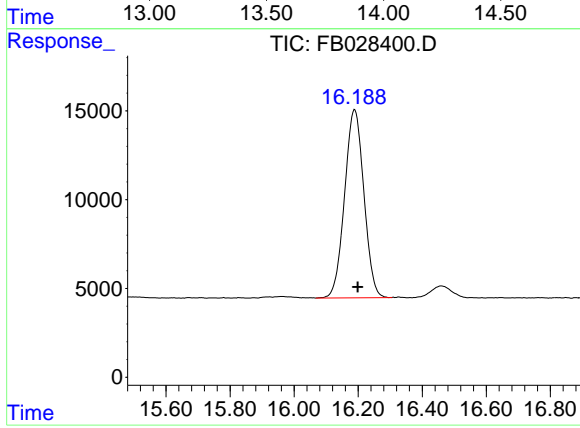
R.T.: 13.187 min  
 Delta R.T.: -0.011 min  
 Response: 438778  
 Conc: 20.11 ng/ml



#9 O-Xylene

R.T.: 13.914 min  
 Delta R.T.: -0.010 min  
 Response: 439077  
 Conc: 20.96 ng/ml

Instrument :  
 FID\_B  
 ClientSampleId :  
 20 PPB GRO STD



#10 1,2,4-Trimethylbenzene

R.T.: 16.189 min  
 Delta R.T.: -0.010 min  
 Response: 442217  
 Conc: 21.99 ng/ml