

Data Path : Z:\pestpcbsrv\HPCHEM1\FID_B\Data\FB092518\
 Data File : FB017925.D
 Signal(s) : FID2B.CH
 Acq On : 25 Sep 2018 15:08
 Operator : MJ/SJ
 Sample : 20 PPB GRO STD
 Misc :
 ALS Vial : 15 Sample Multiplier: 1

Integration File: Calibration.e
 Quant Time: Sep 26 07:58:31 2018
 Quant Method : Z:\pestpcbsrv\HPCHEM1\FID_B\Method\FB091418.M
 Quant Title :
 QLast Update : Fri Sep 14 13:09:25 2018
 Response via : Initial Calibration
 Integrator: ChemStation

Volume Inj. : 5 g/ml
 Signal Phase : RTX-502.2
 Signal Info : 60mx0.53mmx3.00um

Compound	R.T.	Response	Conc Units

System Monitoring Compounds			
5) s AAA-TFT	9.107	183126	21.649 ng/ml
Target Compounds			
1) t 2-Methylpentane	4.960	443757	27.865 ng/ml
2) t 2,2,4-Trimethylpentane	7.724	468820	29.460 ng/ml
3) t n-Heptane	8.062	150601	9.773 ng/ml
4) t Benzene	8.202	189582	9.959 ng/ml
6) t Toluene	10.956	475302	30.033 ng/ml
7) t Ethylbenzene	13.405	172189	10.538 ng/ml
8) t m-Xylene	13.538	356508	20.607 ng/ml
9) t O-Xylene	14.270	374415	20.604 ng/ml
10) t 1,2,4-Trimethylbenzene	16.552	425302	19.994 ng/ml

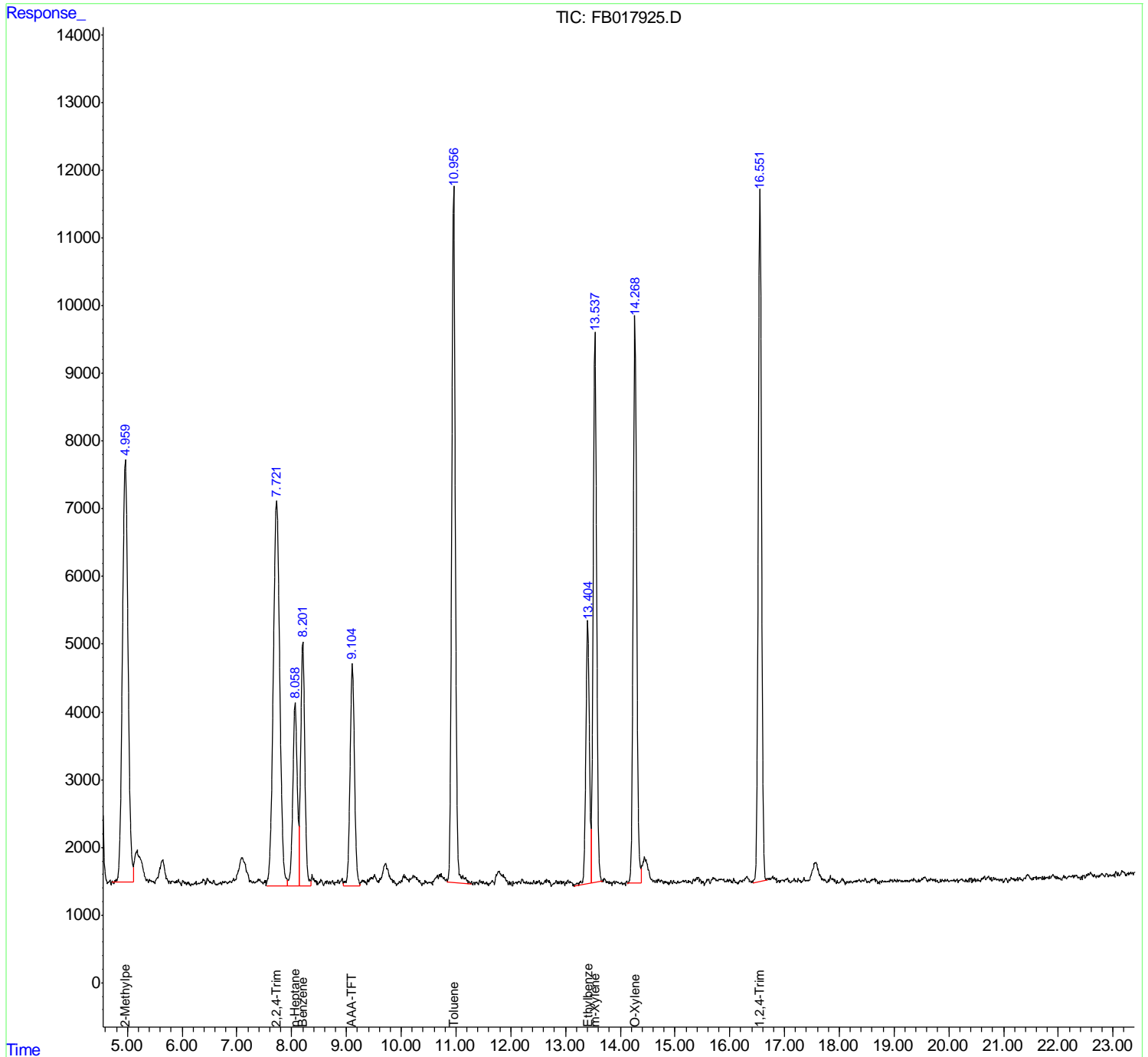
(f)=RT Delta > 1/2 Window

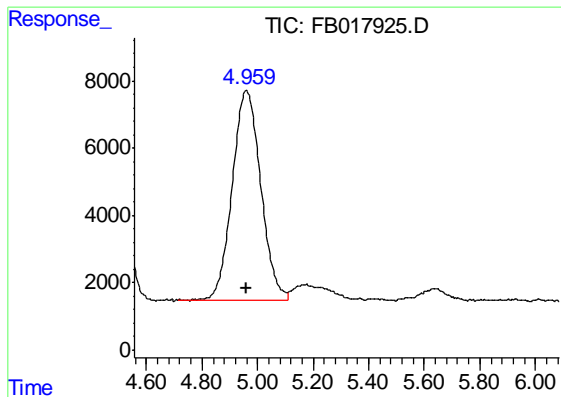
(m)=manual int.

Data Path : Z:\pestpcbsrv\HPCHEM1\FID_B\Data\FB092518\
 Data File : FB017925.D
 Signal(s) : FID2B.CH
 Acq On : 25 Sep 2018 15:08
 Operator : MJ/SJ
 Sample : 20 PPB GRO STD
 Misc :
 ALS Vial : 15 Sample Multiplier: 1

Integration File: Calibration.e
 Quant Time: Sep 26 07:58:31 2018
 Quant Method : Z:\pestpcbsrv\HPCHEM1\FID_B\Method\FB091418.M
 Quant Title :
 QLast Update : Fri Sep 14 13:09:25 2018
 Response via : Initial Calibration
 Integrator: ChemStation

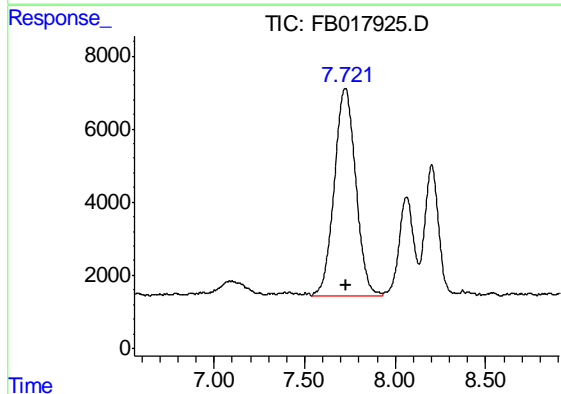
Volume Inj. : 5 g/ml
 Signal Phase : RTX-502.2
 Signal Info : 60mx0.53mmx3.00um





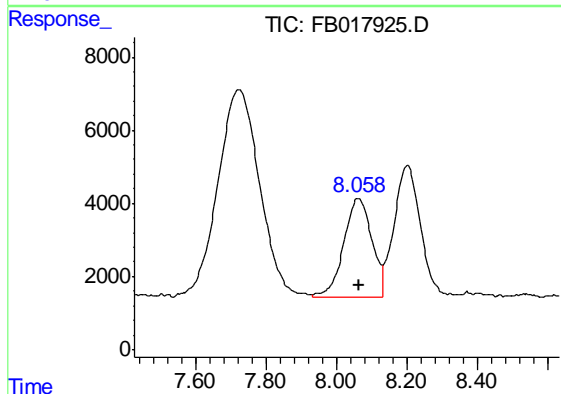
#1 2-Methylpentane

R.T.: 4.960 min
 Delta R.T.: 0.000 min
 Response: 443757
 Conc: 27.86 ng/ml



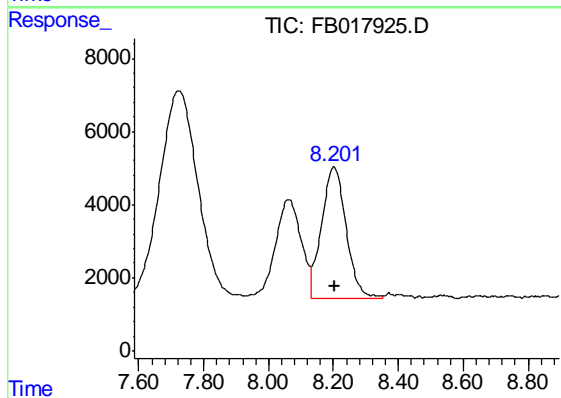
#2 2,2,4-Trimethylpentane

R.T.: 7.724 min
 Delta R.T.: -0.004 min
 Response: 468820
 Conc: 29.46 ng/ml



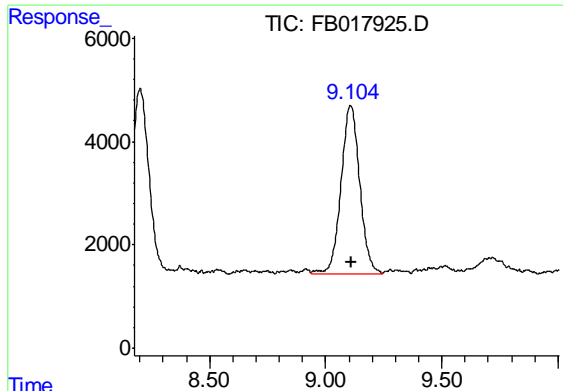
#3 n-Heptane

R.T.: 8.062 min
 Delta R.T.: -0.003 min
 Response: 150601
 Conc: 9.77 ng/ml



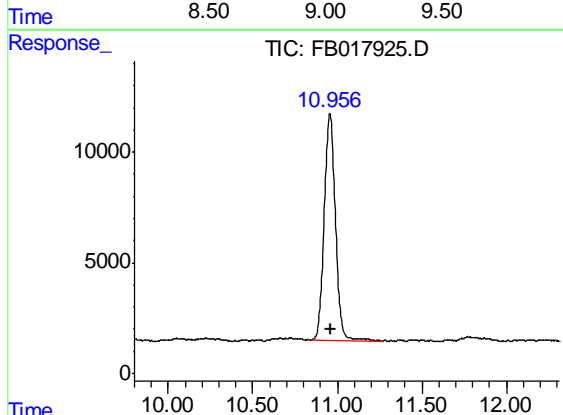
#4 Benzene

R.T.: 8.202 min
 Delta R.T.: -0.003 min
 Response: 189582
 Conc: 9.96 ng/ml



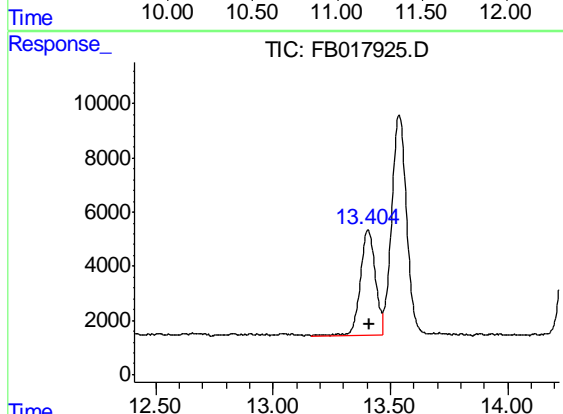
#5 AAA-TFT

R.T.: 9.107 min
Delta R.T.: -0.003 min
Response: 183126
Conc: 21.65 ng/ml



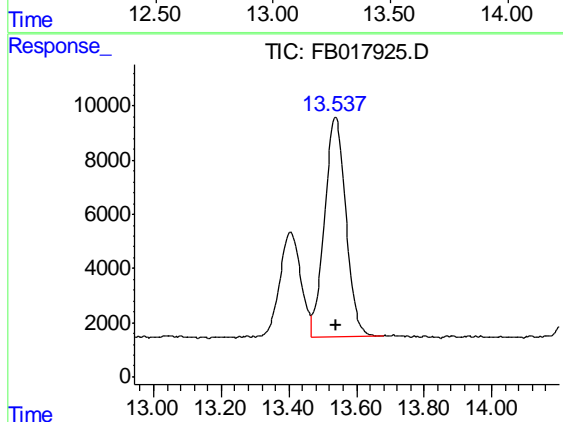
#6 Toluene

R.T.: 10.956 min
Delta R.T.: -0.003 min
Response: 475302
Conc: 30.03 ng/ml



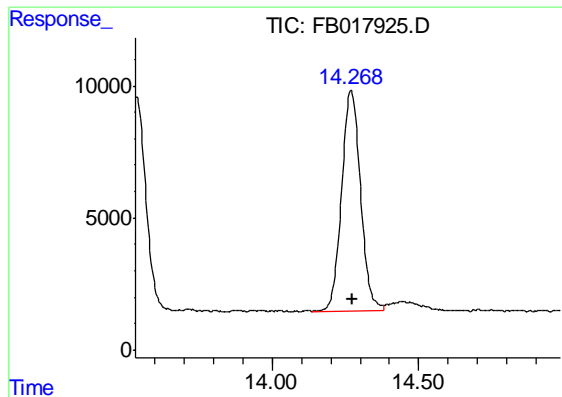
#7 Ethylbenzene

R.T.: 13.405 min
Delta R.T.: -0.003 min
Response: 172189
Conc: 10.54 ng/ml



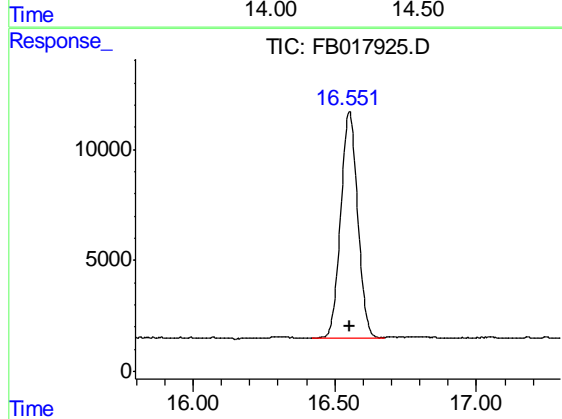
#8 m-Xylene

R.T.: 13.538 min
Delta R.T.: -0.003 min
Response: 356508
Conc: 20.61 ng/ml



#9 O-Xylene

R.T.: 14.270 min
Delta R.T.: -0.003 min
Response: 374415
Conc: 20.60 ng/ml



#10 1,2,4-Trimethylbenzene

R.T.: 16.552 min
Delta R.T.: -0.003 min
Response: 425302
Conc: 19.99 ng/ml