

Data Path : Z:\pestpcbsrv\HPCHEM1\FID_B\Data\FB092518\
Data File : FB017951.D
Signal(s) : FID2B.CH
Acq On : 26 Sep 2018 4:32
Operator : MJ/SJ
Sample : J5074-03
Misc : 5.01g/5.00mL DI Water
ALS Vial : 26 Sample Multiplier: 1

Integration File: Calibration.e
Quant Time: Sep 26 07:59:53 2018
Quant Method : Z:\pestpcbsrv\HPCHEM1\FID_B\Method\FB091418.M
Quant Title :
QLast Update : Fri Sep 14 13:09:25 2018
Response via : Initial Calibration
Integrator: ChemStation

Volume Inj. : 5 g/ml
Signal Phase : RTX-502.2
Signal Info : 60mx0.53mmx3.00um

Compound	R.T.	Response	Conc Units
----------	------	----------	------------

System Monitoring Compounds

Target Compounds

7) t Ethylbenzene	13.387	1282	0.078 ng/ml
8) t m-Xylene	13.551	2850	0.165 ng/ml

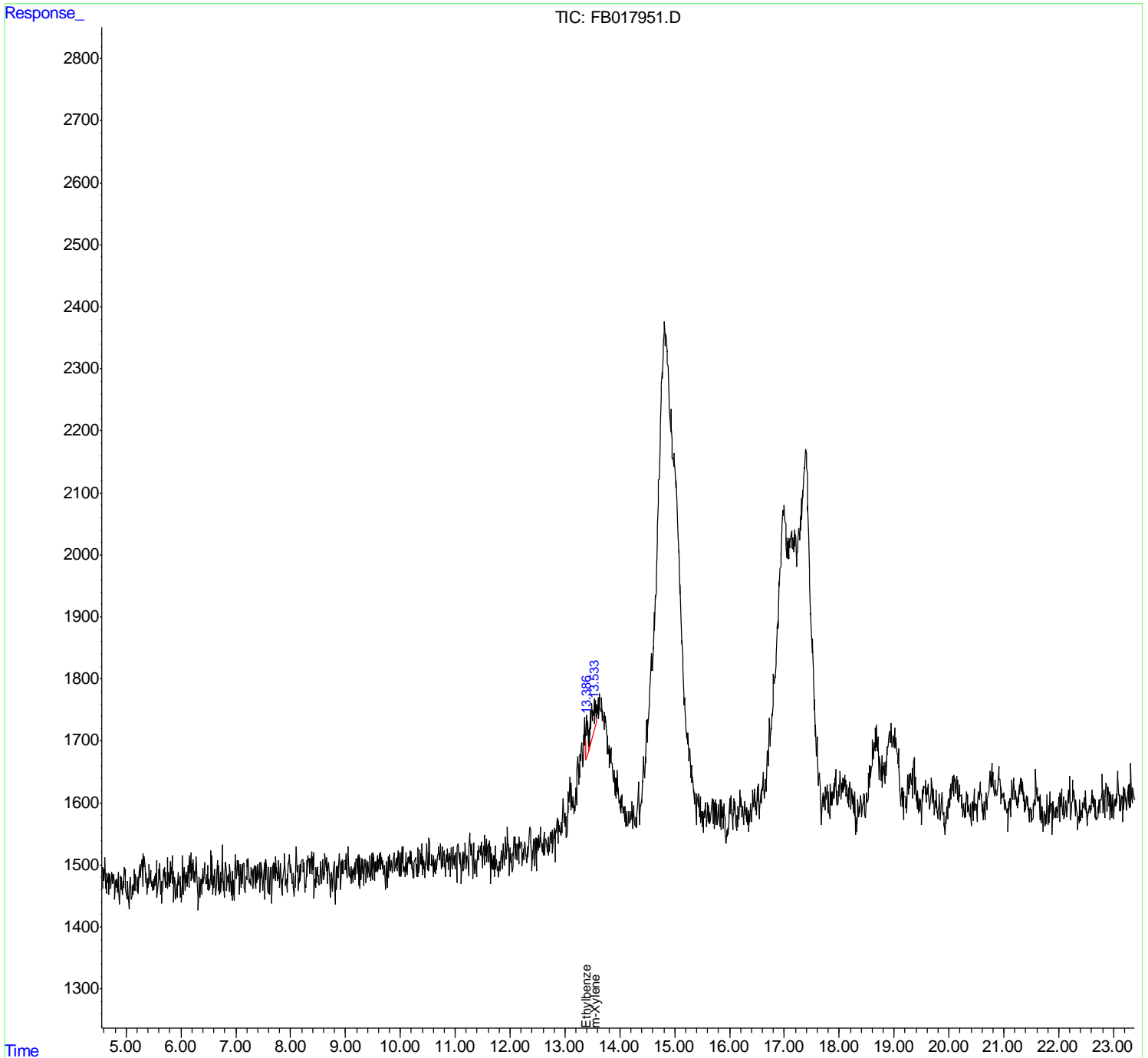
(f)=RT Delta > 1/2 Window

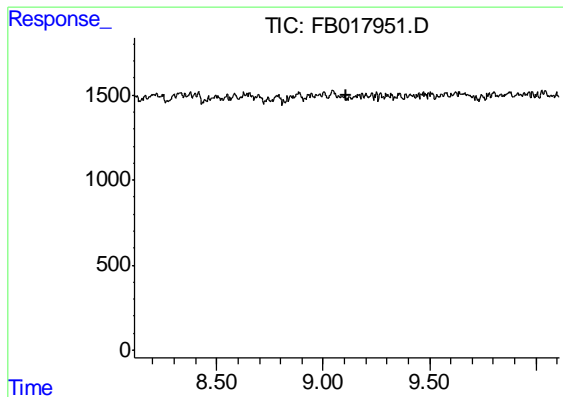
(m)=manual int.

Data Path : Z:\pestpcbsrv\HPCHEM1\FID_B\Data\FB092518\
Data File : FB017951.D
Signal(s) : FID2B.CH
Acq On : 26 Sep 2018 4:32
Operator : MJ/SJ
Sample : J5074-03
Misc : 5.01g/5.00mL DI Water
ALS Vial : 26 Sample Multiplier: 1

Integration File: Calibration.e
Quant Time: Sep 26 07:59:53 2018
Quant Method : Z:\pestpcbsrv\HPCHEM1\FID_B\Method\FB091418.M
Quant Title :
QLast Update : Fri Sep 14 13:09:25 2018
Response via : Initial Calibration
Integrator: ChemStation

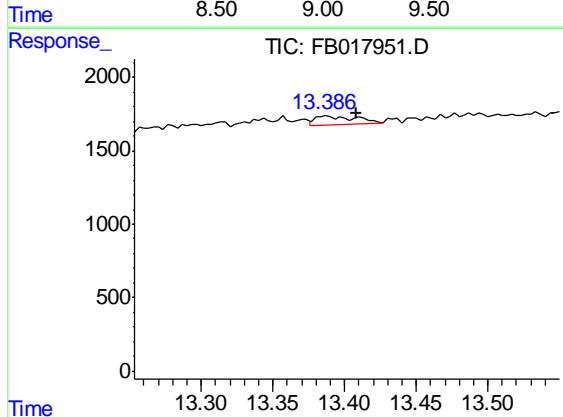
Volume Inj. : 5 g/ml
Signal Phase : RTX-502.2
Signal Info : 60mx0.53mmx3.00um





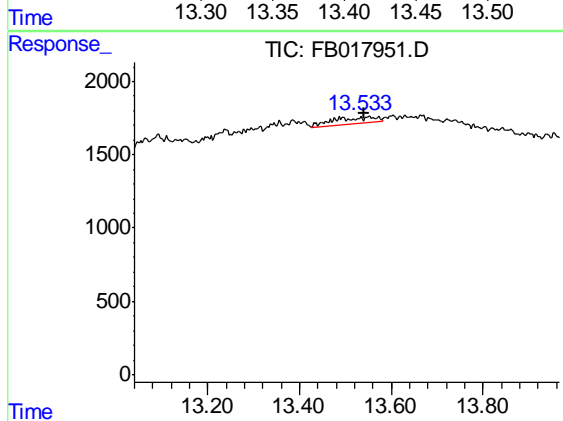
#5 AAA-TFT

R.T.: 0.000 min
 Exp R.T. : 9.110 min
 Response: 0
 Conc: N.D.



#7 Ethylbenzene

R.T.: 13.387 min
 Delta R.T.: -0.021 min
 Response: 1282
 Conc: 0.08 ng/ml



#8 m-Xylene

R.T.: 13.551 min
 Delta R.T.: 0.010 min
 Response: 2850
 Conc: 0.16 ng/ml