

Data Path : Z:\pestpcbsrv\HPCHEM1\FID_B\Data\FB092719\
 Data File : FB022615.D
 Signal(s) : FID2B.CH
 Acq On : 27 Sep 2019 8:16
 Operator : DD/AJ
 Sample : VBF0927S1
 Misc : 5.00g/5.00ML DI WATER
 ALS Vial : 2 Sample Multiplier: 1

Instrument :
 FID_B
 ClientSampleId :

Integration File: Calibration.e
 Quant Time: Sep 27 23:06:13 2019
 Quant Method : Z:\pestpcbsrv\HPCHEM1\FID_B\Method\FB090419.M
 Quant Title :
 QLast Update : Wed Sep 04 17:01:40 2019
 Response via : Initial Calibration
 Integrator: ChemStation

Volume Inj. : 5 g/ml
 Signal Phase : RTX-502.2
 Signal Info : 60mx0.53mmx3.00um

Compound	R.T.	Response	Conc Units

System Monitoring Compounds			
5) s AAA-TFT	8.964	529965	18.220 ng/ml
Target Compounds			
4) t Benzene	8.055	3890	0.066 ng/ml
10) t 1,2,4-Trimethylbenzene	16.405	3313	0.127 ng/ml

(f)=RT Delta > 1/2 Window

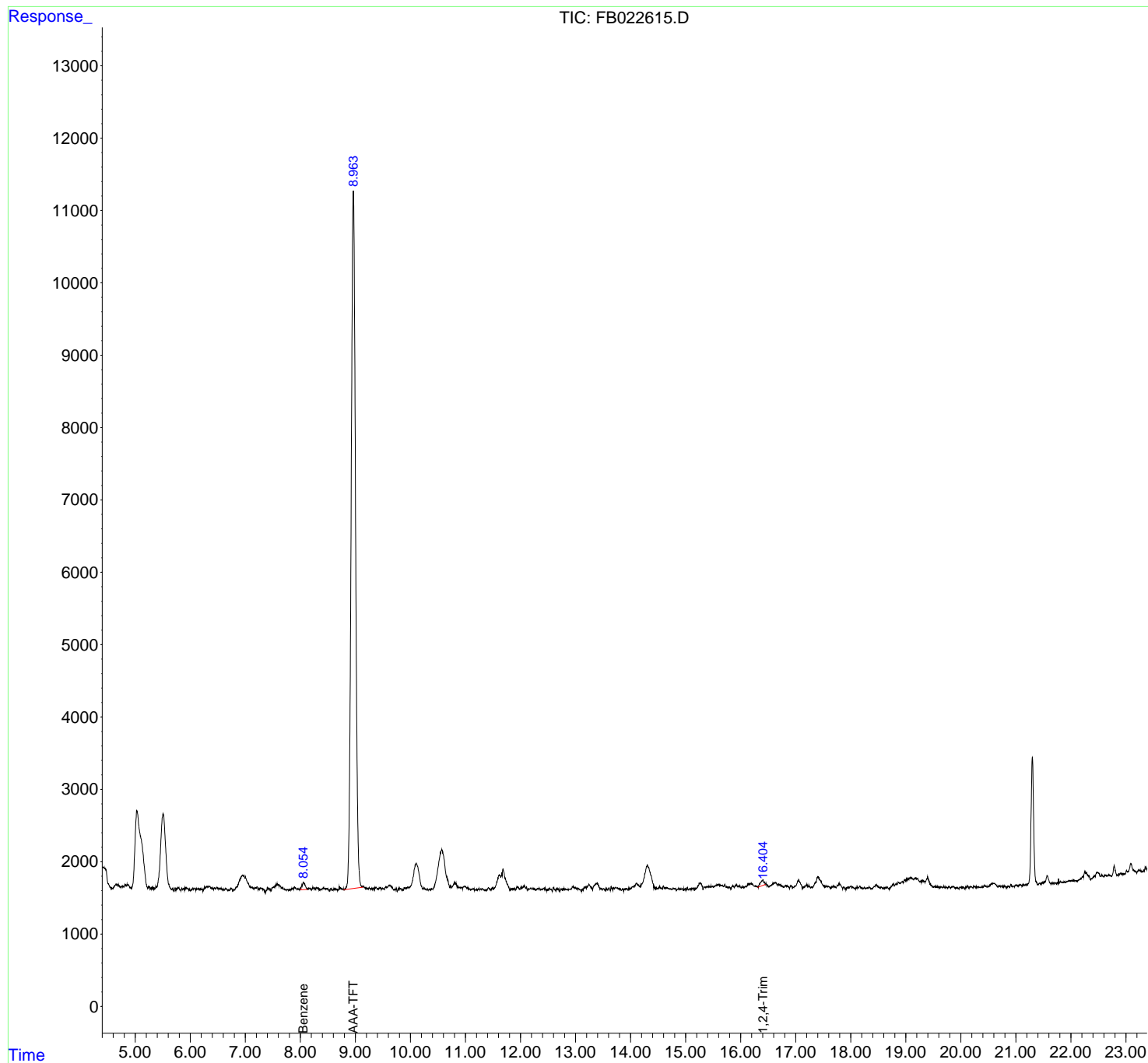
(m)=manual int.

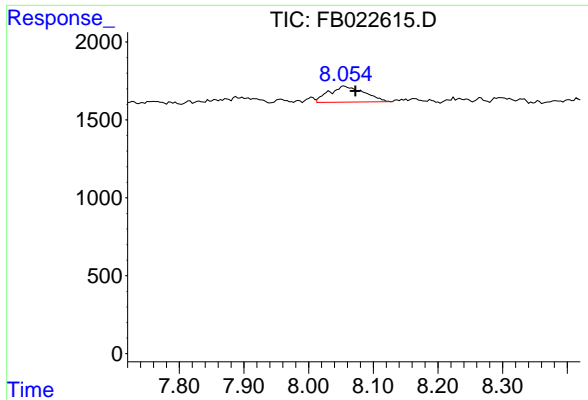
Data Path : Z:\pestpcbsrv\HPCHEM1\FID_B\Data\FB092719\
 Data File : FB022615.D
 Signal(s) : FID2B.CH
 Acq On : 27 Sep 2019 8:16
 Operator : DD/AJ
 Sample : VBF0927S1
 Misc : 5.00g/5.00ML DI WATER
 ALS Vial : 2 Sample Multiplier: 1

Instrument :
 FID_B
 ClientSampleId :

Integration File: Calibration.e
 Quant Time: Sep 27 23:06:13 2019
 Quant Method : Z:\pestpcbsrv\HPCHEM1\FID_B\Method\FB090419.M
 Quant Title :
 QLast Update : Wed Sep 04 17:01:40 2019
 Response via : Initial Calibration
 Integrator: ChemStation

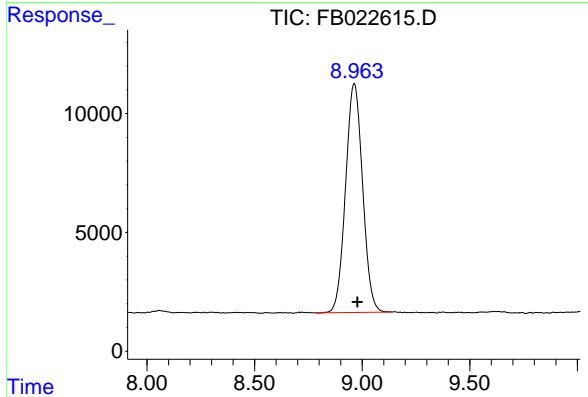
Volume Inj. : 5 g/ml
 Signal Phase : RTX-502.2
 Signal Info : 60mx0.53mmx3.00um



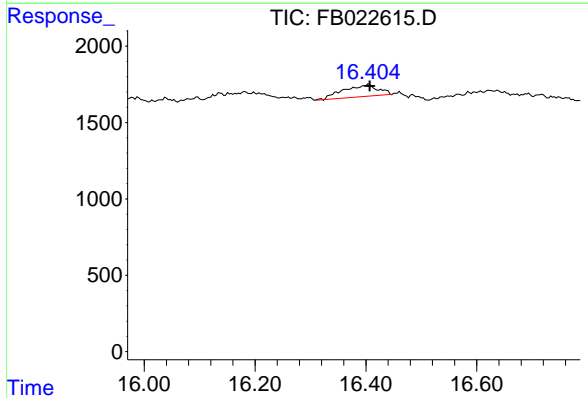


#4 Benzene
 R.T.: 8.055 min
 Delta R.T.: -0.017 min
 Response: 3890
 Conc: 0.07 ng/ml

Instrument :
 FID_B
 ClientSampleId :



#5 AAA-TFT
 R.T.: 8.964 min
 Delta R.T.: -0.015 min
 Response: 529965
 Conc: 18.22 ng/ml



#10 1,2,4-Trimethylbenzene
 R.T.: 16.405 min
 Delta R.T.: -0.002 min
 Response: 3313
 Conc: 0.13 ng/ml