

Data Path : Z:\pestpcbsrv\HPCHEM1\FID_B\Data\FB092920\
 Data File : FB024971.D
 Signal(s) : FID2B.CH
 Acq On : 29 Sep 2020 14:32
 Operator : DD/AJ
 Sample : 20 PPB GRO STD
 Misc :
 ALS Vial : 9 Sample Multiplier: 1

Instrument :
 FID_B
 ClientSampleId :
 20 PPB GRO STD

Integration File: Calibration.e
 Quant Time: Sep 30 00:53:22 2020
 Quant Method : Z:\pestpcbsrv\HPCHEM1\FID_B\Method\FB092320.M
 Quant Title :
 QLast Update : Wed Sep 23 11:20:20 2020
 Response via : Initial Calibration
 Integrator: ChemStation

Volume Inj. : 5 g/ml
 Signal Phase : RTX-502.2
 Signal Info : 60mx0.53mmx3.00um

Compound	R.T.	Response	Conc Units

System Monitoring Compounds			
5) s AAA-TFT	8.803	466412	22.216 ng/ml
Target Compounds			
1) t 2-Methylpentane	4.691	905353	30.105 ng/ml
2) t 2,2,4-Trimethylpentane	7.420	926750	30.322 ng/ml
3) t n-Heptane	7.761	304887	10.022 ng/ml
4) t Benzene	7.897	382610	10.271 ng/ml
6) t Toluene	10.635	1068662	30.612 ng/ml
7) t Ethylbenzene	13.074	314078	9.689 ng/ml
8) t m-Xylene	13.207	628185	19.775 ng/ml
9) t O-Xylene	13.935	613917	20.203 ng/ml
10) t 1,2,4-Trimethylbenzene	16.212	497064	19.598 ng/ml

(f)=RT Delta > 1/2 Window

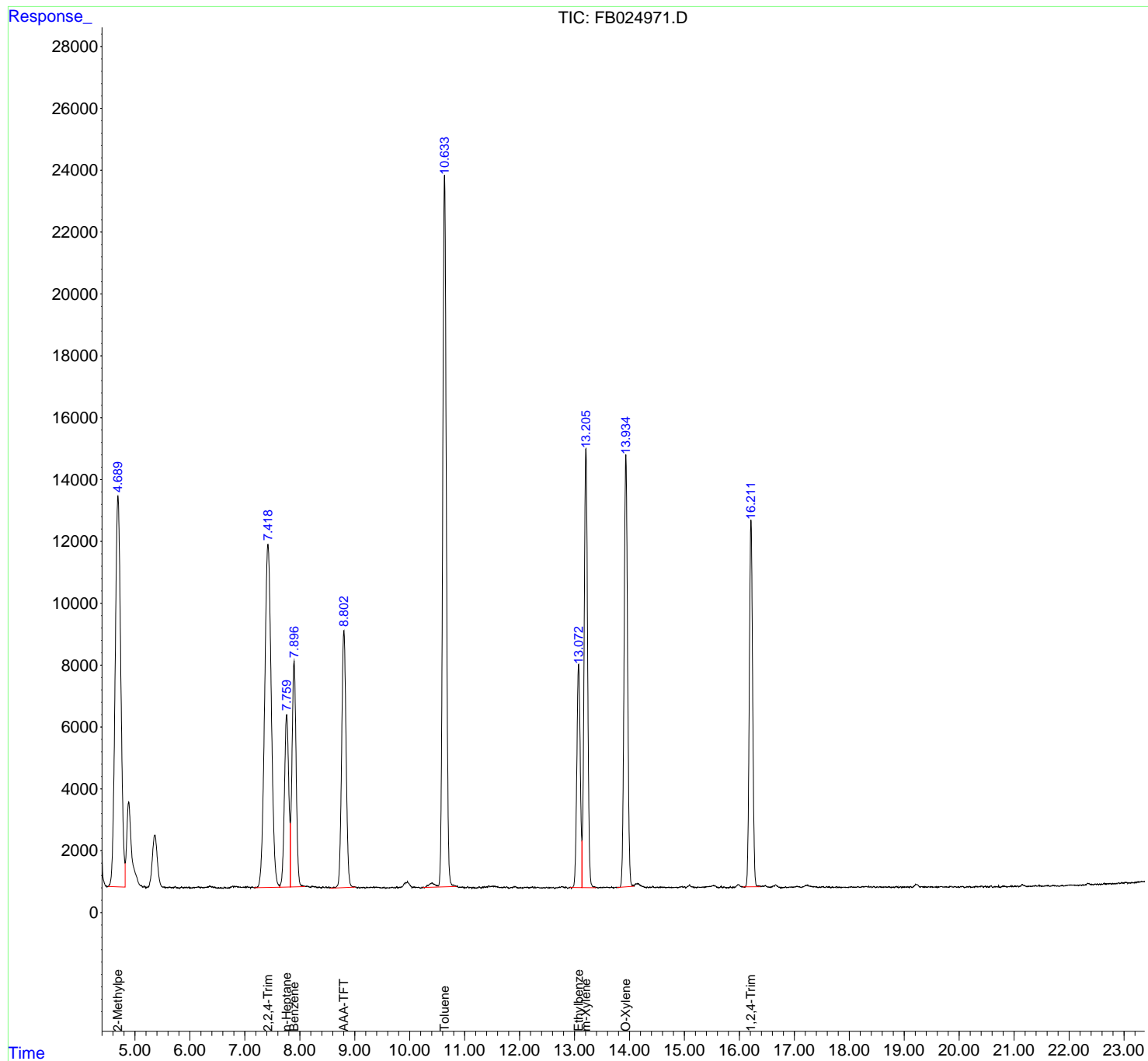
(m)=manual int.

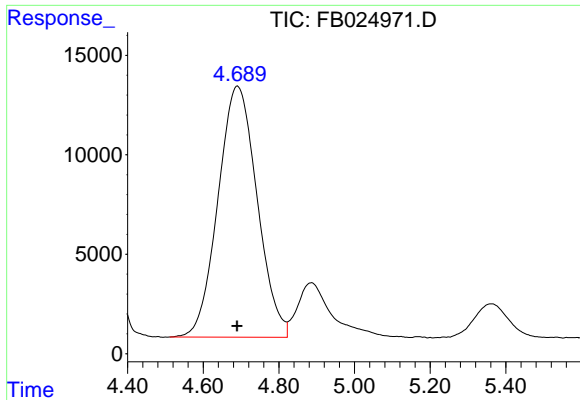
Data Path : Z:\pestpcbsrv\HPCHEM1\FID_B\Data\FB092920\
Data File : FB024971.D
Signal(s) : FID2B.CH
Acq On : 29 Sep 2020 14:32
Operator : DD/AJ
Sample : 20 PPB GRO STD
Misc :
ALS Vial : 9 Sample Multiplier: 1

Instrument :
FID_B
ClientSampled :
20 PPB GRO STD

Integration File: Calibration.e
Quant Time: Sep 30 00:53:22 2020
Quant Method : Z:\pestpcbsrv\HPCHEM1\FID_B\Method\FB092320.M
Quant Title :
QLast Update : Wed Sep 23 11:20:20 2020
Response via : Initial Calibration
Integrator: ChemStation

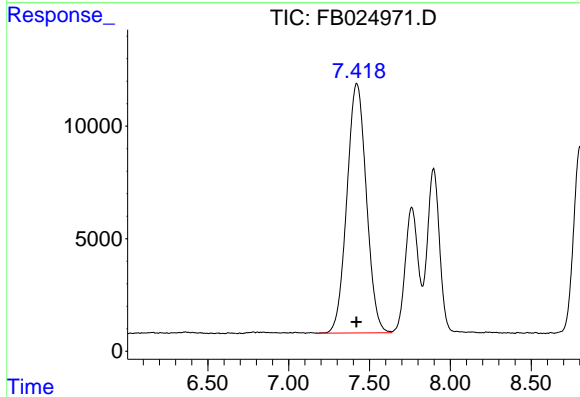
Volume Inj. : 5 g/ml
Signal Phase : RTX-502.2
Signal Info : 60mx0.53mmx3.00um



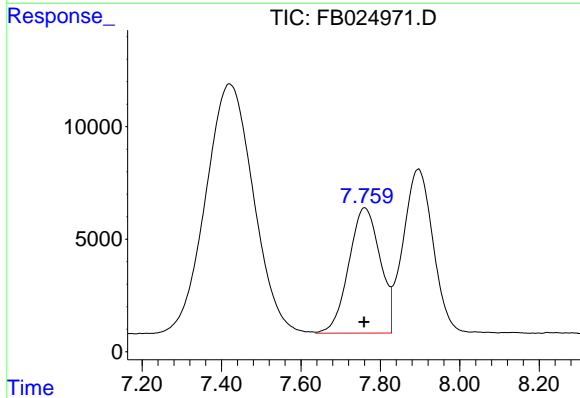


#1 2-Methylpentane
 R.T.: 4.691 min
 Delta R.T.: 0.000 min
 Response: 905353
 Conc: 30.10 ng/ml

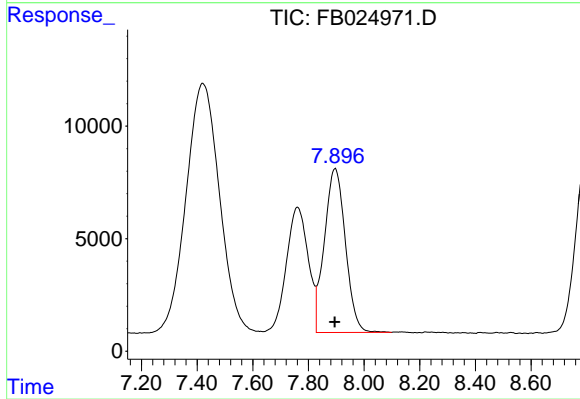
Instrument :
 FID_B
 ClientSampleId :
 20 PPB GRO STD



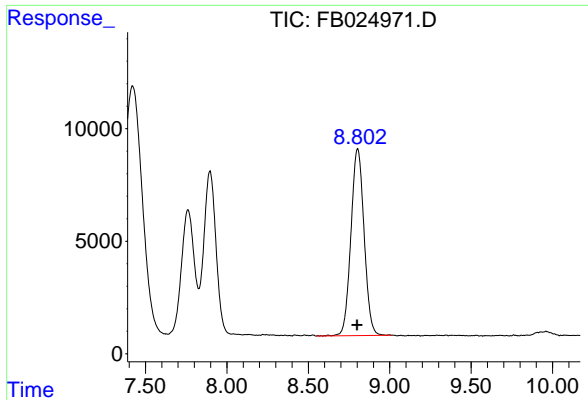
#2 2,2,4-Trimethylpentane
 R.T.: 7.420 min
 Delta R.T.: 0.002 min
 Response: 926750
 Conc: 30.32 ng/ml



#3 n-Heptane
 R.T.: 7.761 min
 Delta R.T.: 0.002 min
 Response: 304887
 Conc: 10.02 ng/ml

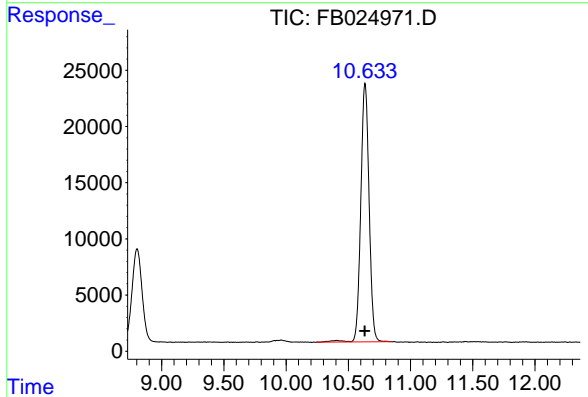


#4 Benzene
 R.T.: 7.897 min
 Delta R.T.: 0.002 min
 Response: 382610
 Conc: 10.27 ng/ml

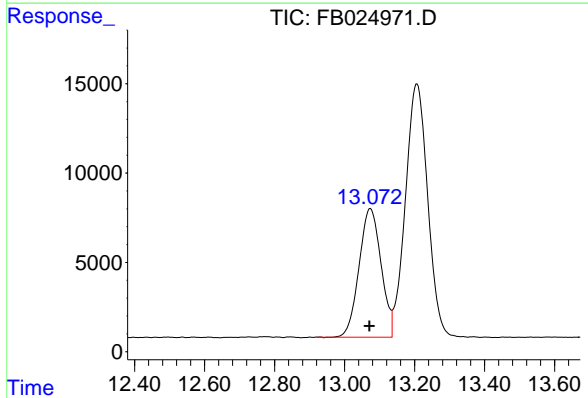


#5 AAA-TFT
 R.T.: 8.803 min
 Delta R.T.: 0.003 min
 Response: 466412
 Conc: 22.22 ng/ml

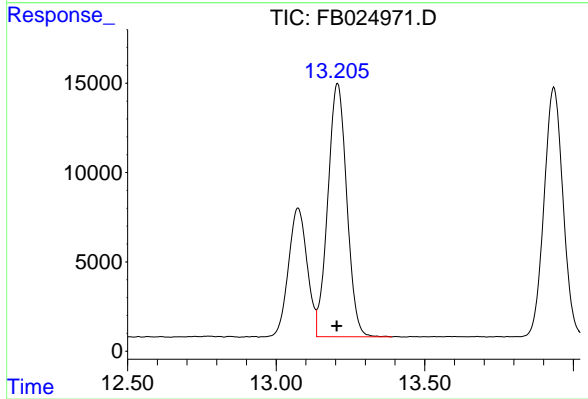
Instrument :
 FID_B
 ClientSampleId :
 20 PPB GRO STD



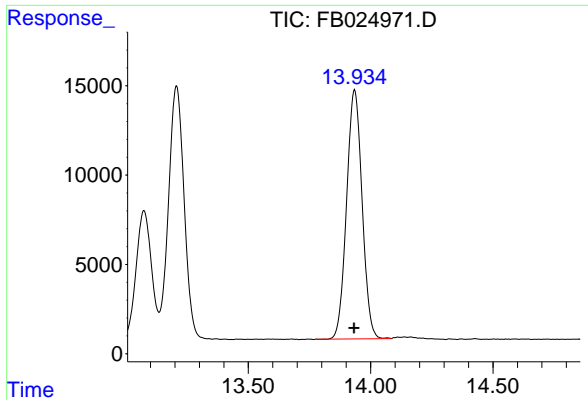
#6 Toluene
 R.T.: 10.635 min
 Delta R.T.: 0.003 min
 Response: 1068662
 Conc: 30.61 ng/ml



#7 Ethylbenzene
 R.T.: 13.074 min
 Delta R.T.: 0.003 min
 Response: 314078
 Conc: 9.69 ng/ml



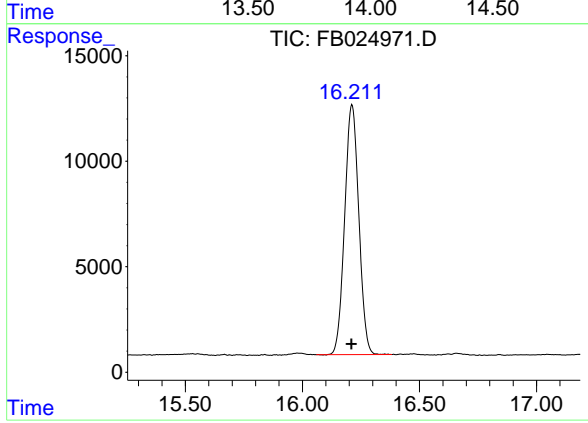
#8 m-Xylene
 R.T.: 13.207 min
 Delta R.T.: 0.003 min
 Response: 628185
 Conc: 19.78 ng/ml



#9 O-Xylene

R.T.: 13.935 min
Delta R.T.: 0.003 min
Response: 613917
Conc: 20.20 ng/ml

Instrument :
FID_B
ClientSampleId :
20 PPB GRO STD



#10 1,2,4-Trimethylbenzene

R.T.: 16.212 min
Delta R.T.: 0.002 min
Response: 497064
Conc: 19.60 ng/ml