

Data Path : Z:\pestpcbsrv\HPCHEM1\FID\_B\Data\FB100323\  
 Data File : FB030377.D  
 Signal(s) : FID2B.CH  
 Acq On : 3 Oct 2023 13:28  
 Operator : YP/AJ  
 Sample : 04699-07  
 Misc : 1 PPB WATER LOD  
 ALS Vial : 7 Sample Multiplier: 1

**Instrument :**  
 FID\_B  
**ClientSampleId :**  
 LOD-MDL-WATER-01-QT4-2023

Integration File: Calibration.e  
 Quant Time: Oct 04 01:35:19 2023  
 Quant Method : Z:\pestpcbsrv\HPCHEM1\FID\_B\Method\FB091823.M  
 Quant Title :  
 QLast Update : Mon Sep 18 13:44:02 2023  
 Response via : Initial Calibration  
 Integrator: ChemStation

Volume Inj. : 5 g/ml  
 Signal Phase : RTX-502.2  
 Signal Info : 60mx0.53mmx3.00um

Compound	R.T.	Response	Conc Units
-----			
System Monitoring Compounds			
5) s AAA-TFT	8.789	231364	16.727 ng/ml
Target Compounds			
1) t 2-Methylpentane	4.715	23428	1.280 ng/ml
2) t 2,2,4-Trimethylpentane	7.413	21930	1.084 ng/ml
3) t n-Heptane	7.747	8717	0.410 ng/ml
4) t Benzene	7.885	9767	0.384 ng/ml
6) t Toluene	10.622	28367	1.144 ng/ml
7) t Ethylbenzene	13.053	8381	0.360 ng/ml
8) t m-Xylene	13.187	16635	0.725 ng/ml
9) t O-Xylene	13.915	17792	0.801 ng/ml
10) t 1,2,4-Trimethylbenzene	16.188	20844	0.951 ng/ml
-----			

(f)=RT Delta > 1/2 Window

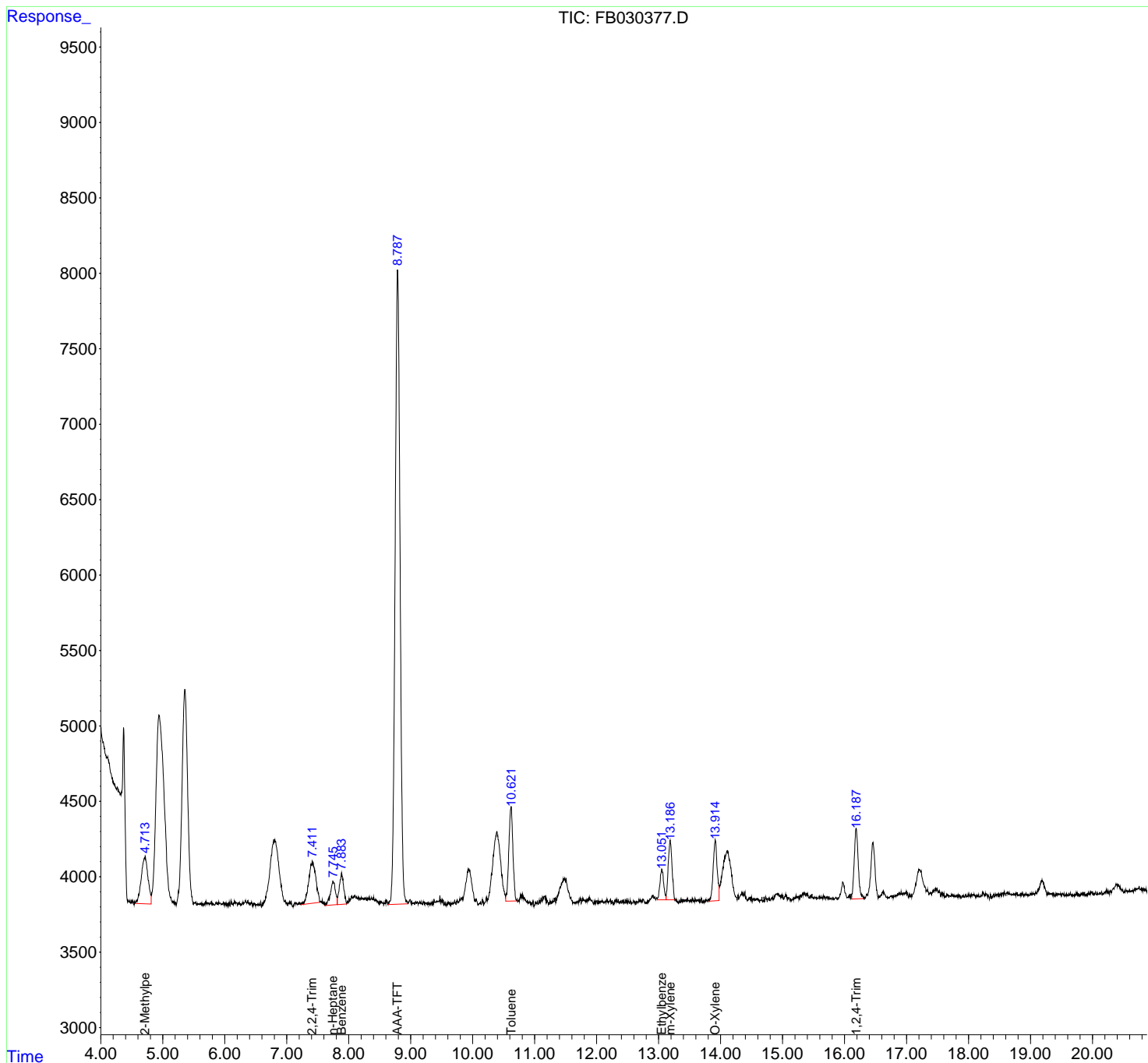
(m)=manual int.

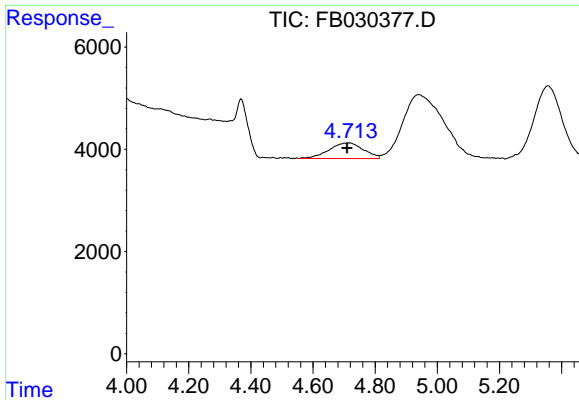
Data Path : Z:\pestpcbsrv\HPCHEM1\FID\_B\Data\FB100323\  
 Data File : FB030377.D  
 Signal(s) : FID2B.CH  
 Acq On : 3 Oct 2023 13:28  
 Operator : YP/AJ  
 Sample : 04699-07  
 Misc : 1 PPB WATER LOD  
 ALS Vial : 7 Sample Multiplier: 1

Instrument :  
 FID\_B  
 ClientSampleId :  
 LOD-MDL-WATER-01-QT4-2023

Integration File: Calibration.e  
 Quant Time: Oct 04 01:35:19 2023  
 Quant Method : Z:\pestpcbsrv\HPCHEM1\FID\_B\Method\FB091823.M  
 Quant Title :  
 QLast Update : Mon Sep 18 13:44:02 2023  
 Response via : Initial Calibration  
 Integrator: ChemStation

Volume Inj. : 5 g/ml  
 Signal Phase : RTX-502.2  
 Signal Info : 60mx0.53mmx3.00um

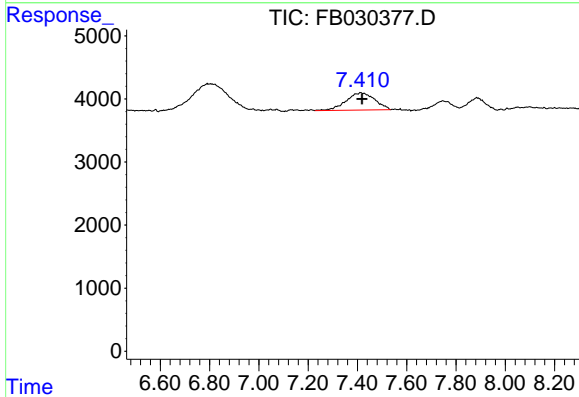




#1 2-Methylpentane

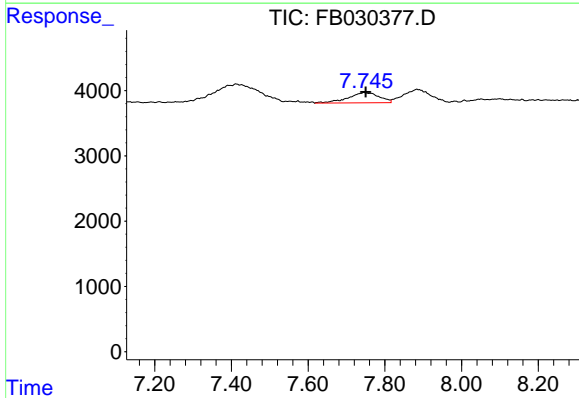
R.T.: 4.715 min  
 Delta R.T.: 0.005 min  
 Response: 23428  
 Conc: 1.28 ng/ml

Instrument : FID\_B  
 ClientSampleId : LOD-MDL-WATER-01-QT4-2023



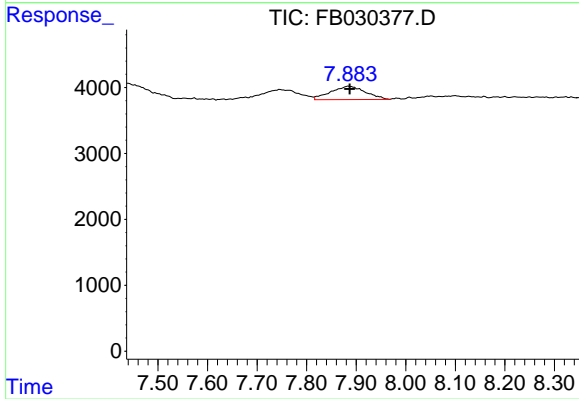
#2 2,2,4-Trimethylpentane

R.T.: 7.413 min  
 Delta R.T.: -0.006 min  
 Response: 21930  
 Conc: 1.08 ng/ml



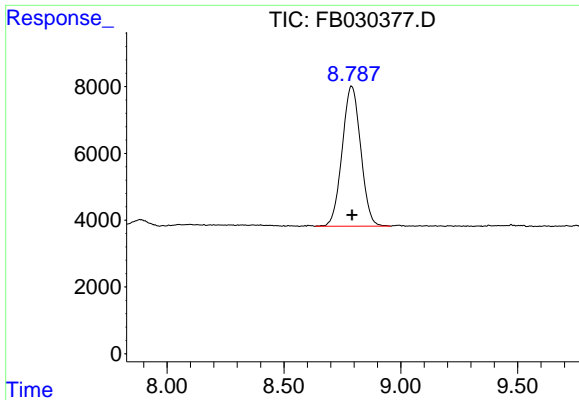
#3 n-Heptane

R.T.: 7.747 min  
 Delta R.T.: -0.004 min  
 Response: 8717  
 Conc: 0.41 ng/ml



#4 Benzene

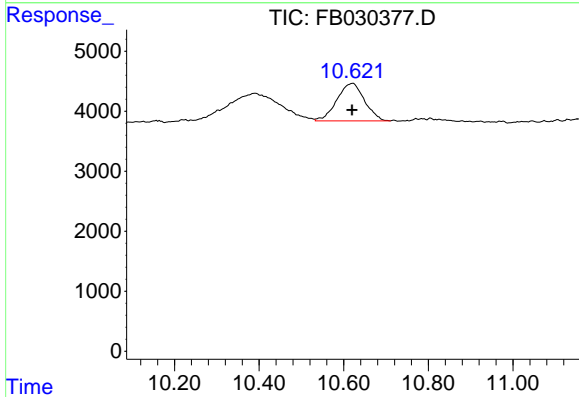
R.T.: 7.885 min  
 Delta R.T.: -0.002 min  
 Response: 9767  
 Conc: 0.38 ng/ml



#5 AAA-TFT

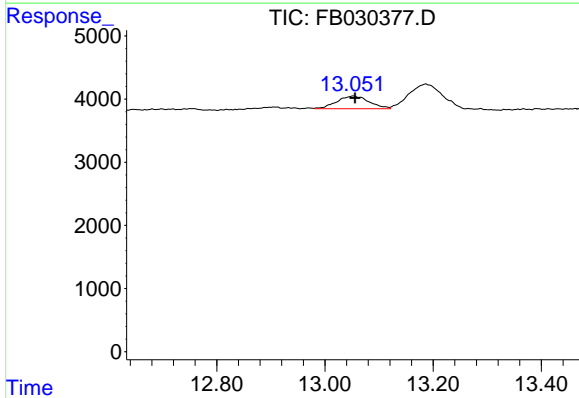
R.T.: 8.789 min  
 Delta R.T.: -0.003 min  
 Response: 231364  
 Conc: 16.73 ng/ml

Instrument : FID\_B  
 ClientSampleId : LOD-MDL-WATER-01-QT4-2023



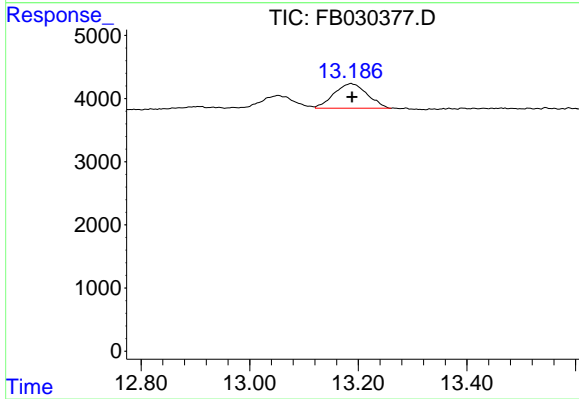
#6 Toluene

R.T.: 10.622 min  
 Delta R.T.: 0.002 min  
 Response: 28367  
 Conc: 1.14 ng/ml



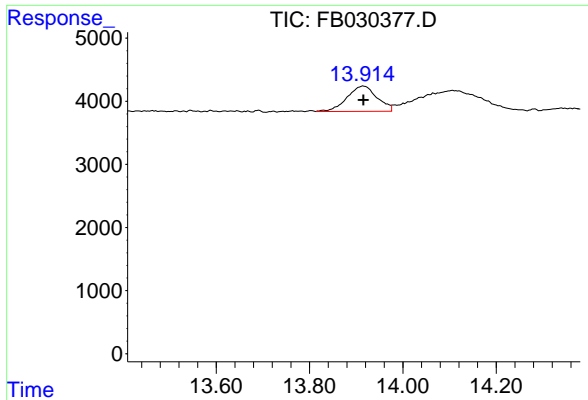
#7 Ethylbenzene

R.T.: 13.053 min  
 Delta R.T.: -0.003 min  
 Response: 8381  
 Conc: 0.36 ng/ml



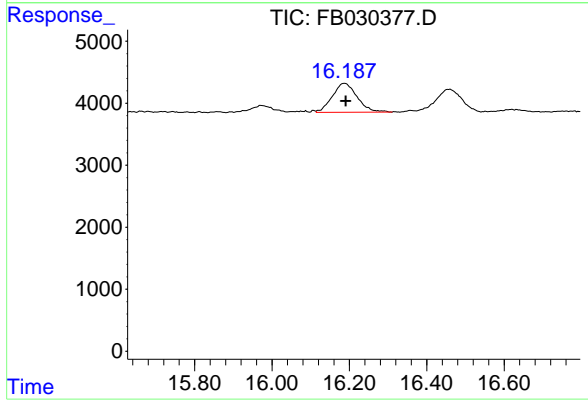
#8 m-Xylene

R.T.: 13.187 min  
 Delta R.T.: -0.001 min  
 Response: 16635  
 Conc: 0.73 ng/ml



#9 O-Xylene  
 R.T.: 13.915 min  
 Delta R.T.: 0.000 min  
 Response: 17792  
 Conc: 0.80 ng/ml

Instrument : FID\_B  
 ClientSampleId : LOD-MDL-WATER-01-QT4-2023



#10 1,2,4-Trimethylbenzene  
 R.T.: 16.188 min  
 Delta R.T.: -0.002 min  
 Response: 20844  
 Conc: 0.95 ng/ml