

Data Path : Z:\pestpcbsrv\HPCHEM1\FID\_B\Data\FB100424\  
 Data File : FB030963.D  
 Signal(s) : FID2B.CH  
 Acq On : 4 Oct 2024 9:45  
 Operator : YP/AJ  
 Sample : 5 GRO STD  
 Misc :  
 ALS Vial : 1 Sample Multiplier: 1

Instrument :  
 FID\_B  
 ClientSampleId :  
 5 GRO STD

Integration File: Calibration.e  
 Quant Time: Oct 04 10:37:05 2024  
 Quant Method : Z:\pestpcbsrv\HPCHEM1\FID\_B\Method\FB100424.M  
 Quant Title :  
 QLast Update : Fri Oct 04 10:36:54 2024  
 Response via : Initial Calibration  
 Integrator: ChemStation

Volume Inj. : 5 g/ml  
 Signal Phase : RTX-502.2  
 Signal Info : 60mx0.53mmx3.00um

Compound	R.T.	Response	Conc Units
-----			
System Monitoring Compounds			
5) s AAA-TFT	8.797	165874	5.429 ng/ml
Target Compounds			
1) t 2-Methylpentane	4.729	267824	8.153 ng/ml
2) t 2,2,4-Trimethylpentane	7.426	369502	8.294 ng/ml
3) t n-Heptane	7.758	106895	2.540 ng/ml
4) t Benzene	7.897	135424	2.686 ng/ml
6) t Toluene	10.623	418553	8.382 ng/ml
7) t Ethylbenzene	13.059	123962	2.833 ng/ml
8) t m-Xylene	13.194	273356	5.659 ng/ml
9) t O-Xylene	13.921	260179	5.826 ng/ml
10) t 1,2,4-Trimethylbenzene	16.197	190778	6.232 ng/ml
-----			

(f)=RT Delta > 1/2 Window

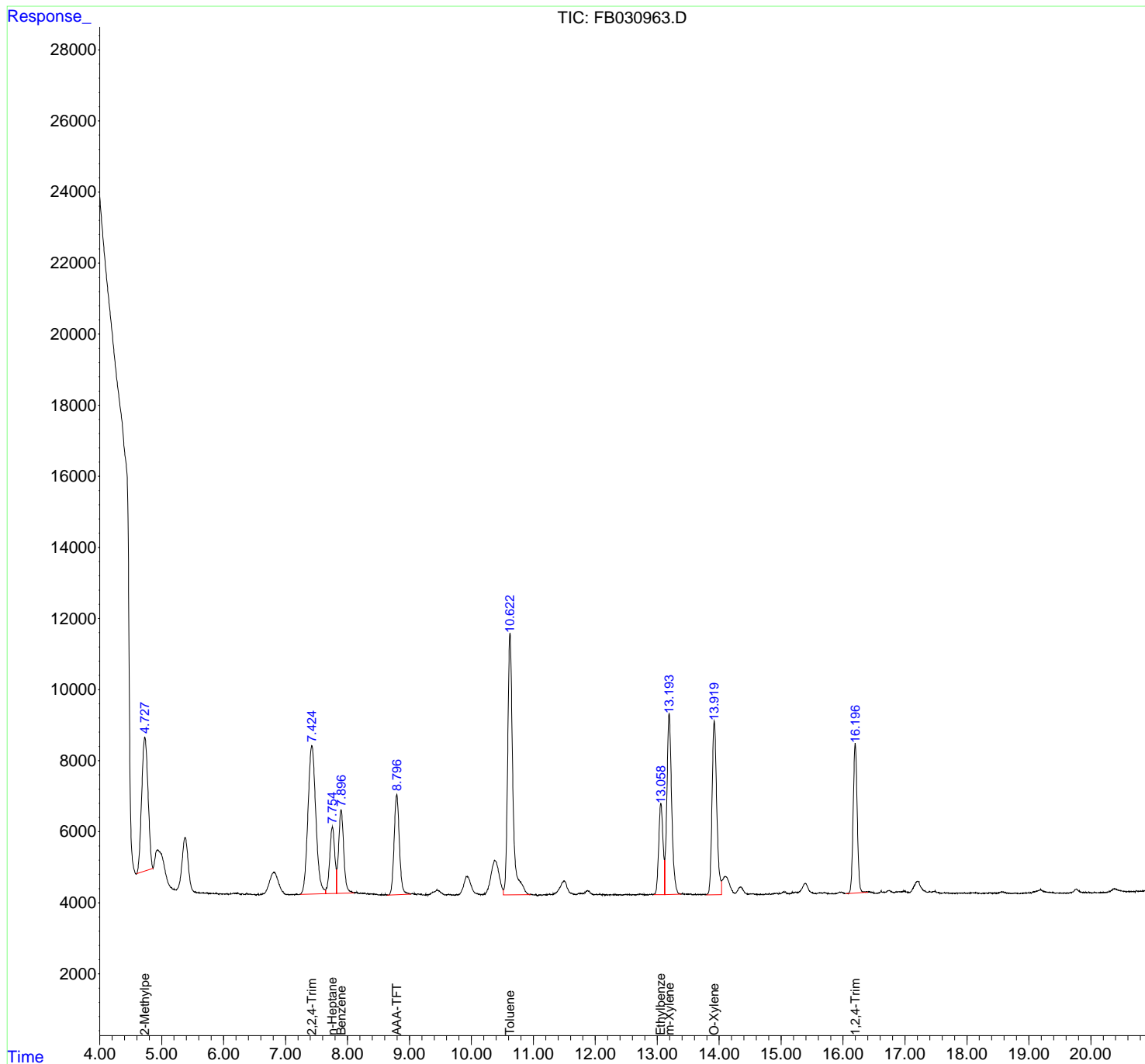
(m)=manual int.

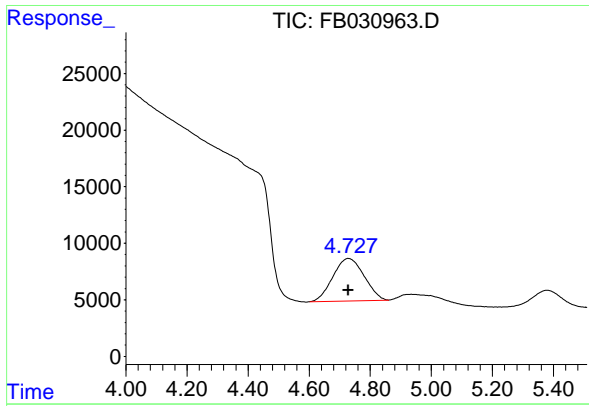
Data Path : Z:\pestpcbsrv\HPCHEM1\FID\_B\Data\FB100424\  
 Data File : FB030963.D  
 Signal(s) : FID2B.CH  
 Acq On : 4 Oct 2024 9:45  
 Operator : YP/AJ  
 Sample : 5 GRO STD  
 Misc :  
 ALS Vial : 1 Sample Multiplier: 1

Instrument :  
 FID\_B  
 ClientSampleId :  
 5 GRO STD

Integration File: Calibration.e  
 Quant Time: Oct 04 10:37:05 2024  
 Quant Method : Z:\pestpcbsrv\HPCHEM1\FID\_B\Method\FB100424.M  
 Quant Title :  
 QLast Update : Fri Oct 04 10:36:54 2024  
 Response via : Initial Calibration  
 Integrator: ChemStation

Volume Inj. : 5 g/ml  
 Signal Phase : RTX-502.2  
 Signal Info : 60mx0.53mmx3.00um

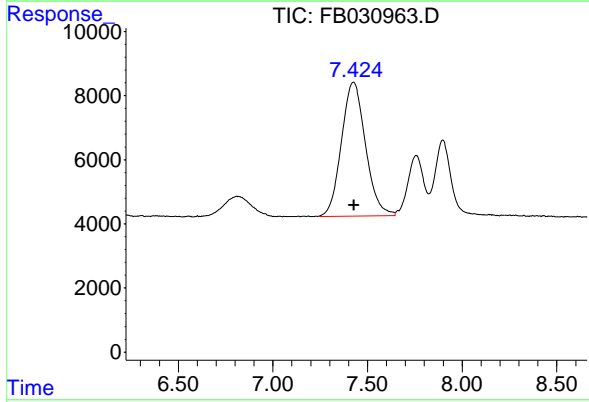




#1 2-Methylpentane

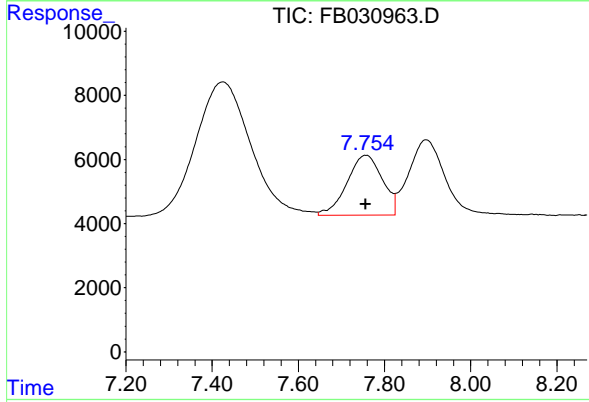
R.T.: 4.729 min  
 Delta R.T.: 0.001 min  
 Response: 267824  
 Conc: 8.15 ng/ml

Instrument :  
 FID\_B  
 ClientSampleId :  
 5 GRO STD



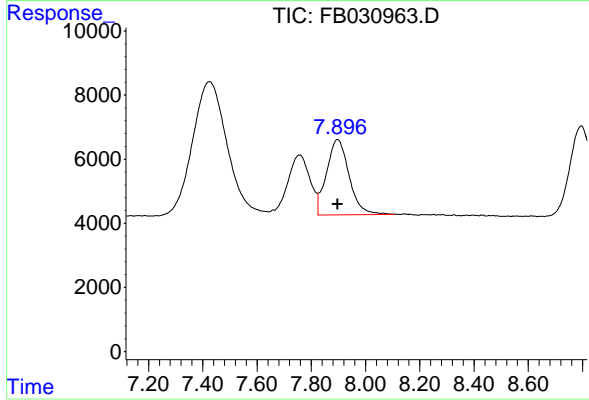
#2 2,2,4-Trimethylpentane

R.T.: 7.426 min  
 Delta R.T.: -0.002 min  
 Response: 369502  
 Conc: 8.29 ng/ml



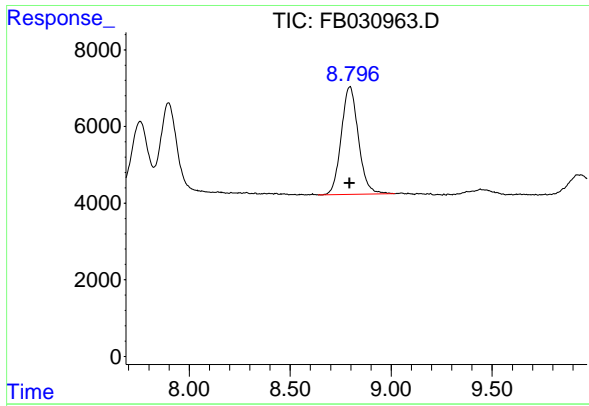
#3 n-Heptane

R.T.: 7.758 min  
 Delta R.T.: 0.000 min  
 Response: 106895  
 Conc: 2.54 ng/ml



#4 Benzene

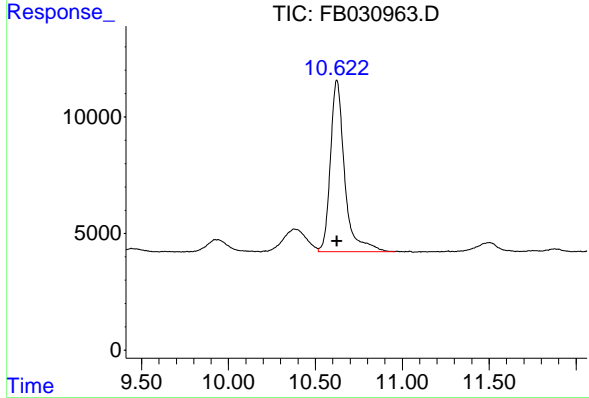
R.T.: 7.897 min  
 Delta R.T.: 0.000 min  
 Response: 135424  
 Conc: 2.69 ng/ml



#5 AAA-TFT

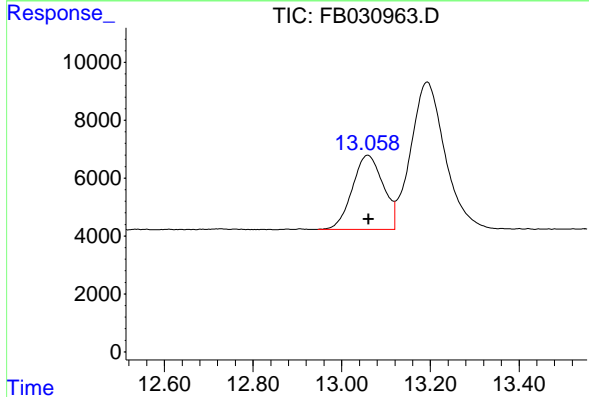
R.T.: 8.797 min  
 Delta R.T.: 0.002 min  
 Response: 165874  
 Conc: 5.43 ng/ml

Instrument : FID\_B  
 ClientSampleId : 5 GRO STD



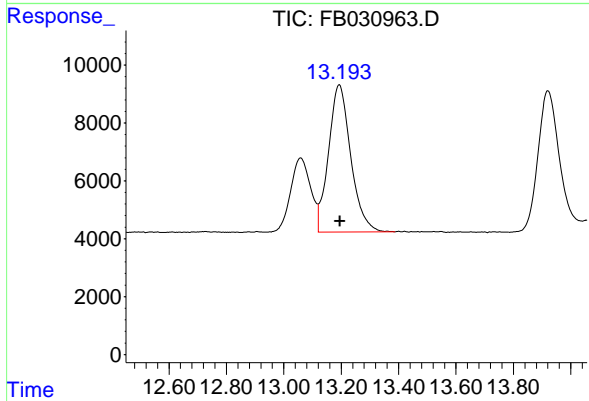
#6 Toluene

R.T.: 10.623 min  
 Delta R.T.: -0.001 min  
 Response: 418553  
 Conc: 8.38 ng/ml



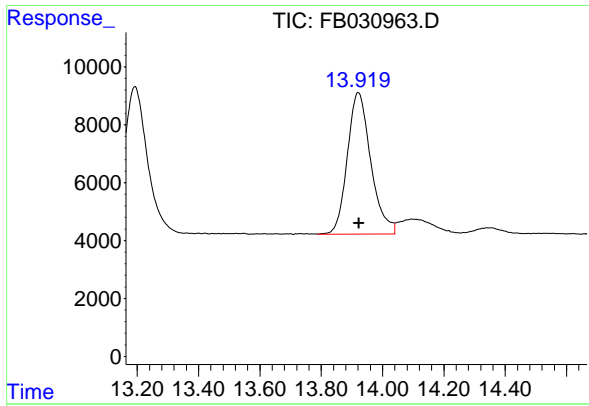
#7 Ethylbenzene

R.T.: 13.059 min  
 Delta R.T.: -0.001 min  
 Response: 123962  
 Conc: 2.83 ng/ml



#8 m-Xylene

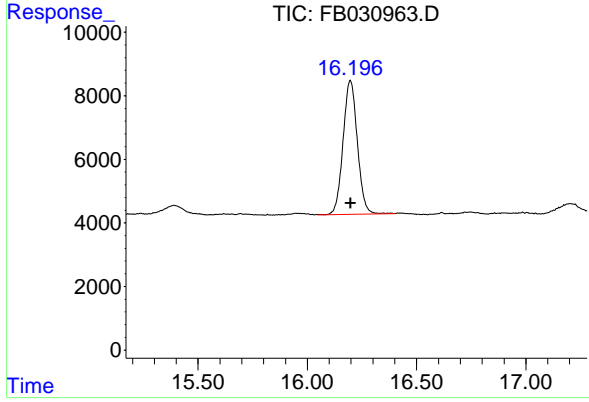
R.T.: 13.194 min  
 Delta R.T.: -0.001 min  
 Response: 273356  
 Conc: 5.66 ng/ml



#9 O-Xylene

R.T.: 13.921 min  
 Delta R.T.: -0.002 min  
 Response: 260179  
 Conc: 5.83 ng/ml

Instrument :  
 FID\_B  
 ClientSampleId :  
 5 GRO STD



#10 1,2,4-Trimethylbenzene

R.T.: 16.197 min  
 Delta R.T.: -0.001 min  
 Response: 190778  
 Conc: 6.23 ng/ml