

Data Path : Z:\pestpcbsrv\HPCHEM1\FID\_B\Data\FB100622\  
Data File : FB028535.D  
Signal(s) : FID2B.CH  
Acq On : 6 Oct 2022 10:17  
Operator : AJ/MA  
Sample : VBF1006S1  
Misc : 5.00G/5.00 ML DI WATER  
ALS Vial : 2 Sample Multiplier: 1

Instrument :  
FID\_B  
ClientSampleId :

Integration File: Calibration.e  
Quant Time: Oct 07 06:25:43 2022  
Quant Method : Z:\pestpcbsrv\HPCHEM1\FID\_B\Method\FB100522.M  
Quant Title :  
QLast Update : Wed Oct 05 12:47:25 2022  
Response via : Initial Calibration  
Integrator: ChemStation

Volume Inj. : 5 g/ml  
Signal Phase : RTX-502.2  
Signal Info : 60mx0.53mmx3.00um

Compound	R.T.	Response	Conc Units
-----			
System Monitoring Compounds			
5) s AAA-TFT	8.793	263967	20.404 ng/ml

Target Compounds

-----

(f)=RT Delta > 1/2 Window

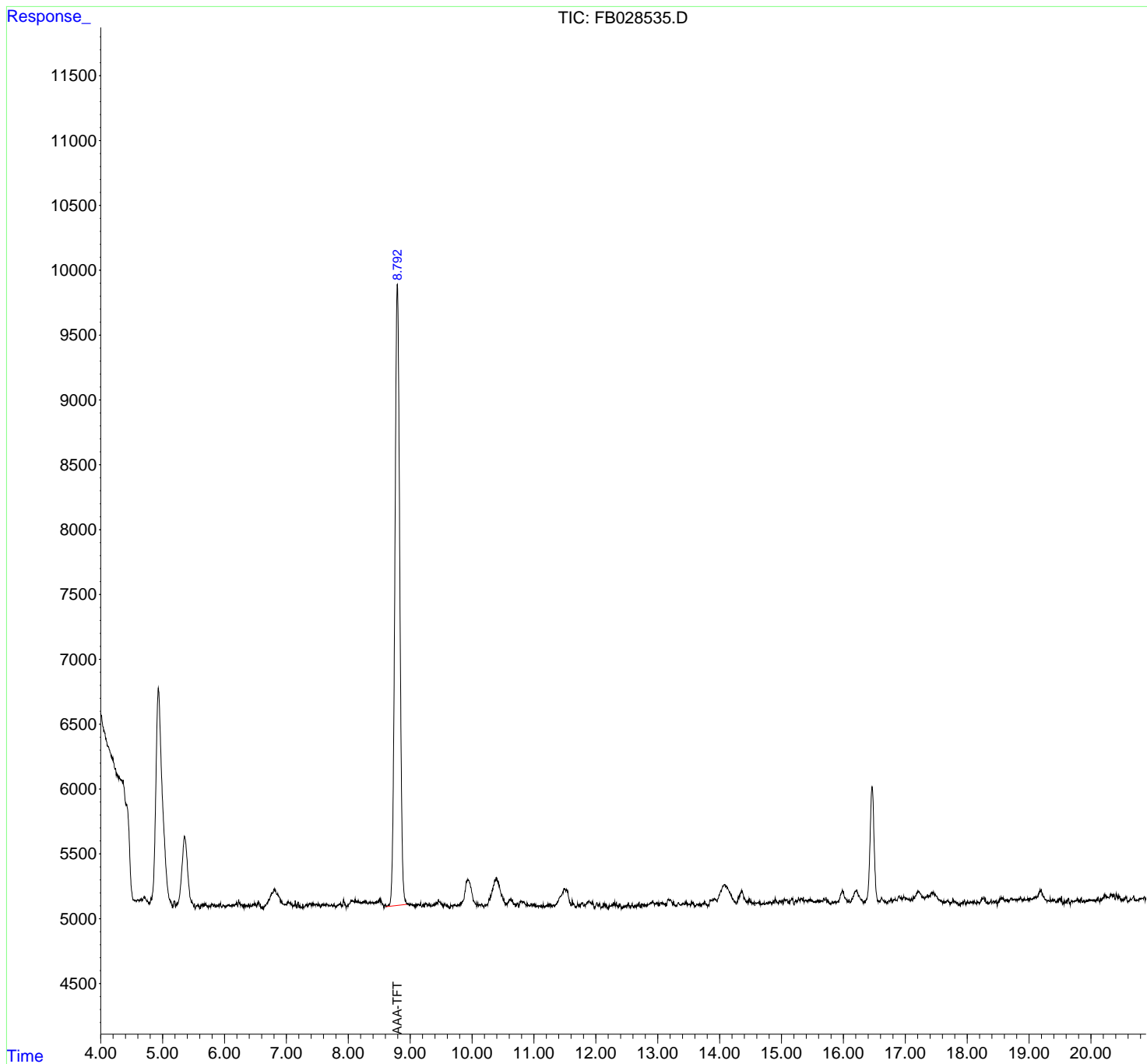
(m)=manual int.

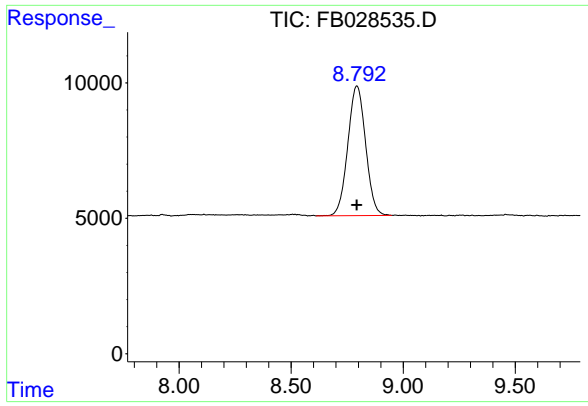
Data Path : Z:\pestpcbsrv\HPCHEM1\FID\_B\Data\FB100622\  
 Data File : FB028535.D  
 Signal(s) : FID2B.CH  
 Acq On : 6 Oct 2022 10:17  
 Operator : AJ/MA  
 Sample : VBF1006S1  
 Misc : 5.00G/5.00 ML DI WATER  
 ALS Vial : 2 Sample Multiplier: 1

Instrument :  
 FID\_B  
 ClientSampleId :

Integration File: Calibration.e  
 Quant Time: Oct 07 06:25:43 2022  
 Quant Method : Z:\pestpcbsrv\HPCHEM1\FID\_B\Method\FB100522.M  
 Quant Title :  
 QLast Update : Wed Oct 05 12:47:25 2022  
 Response via : Initial Calibration  
 Integrator: ChemStation

Volume Inj. : 5 g/ml  
 Signal Phase : RTX-502.2  
 Signal Info : 60mx0.53mmx3.00um





#5 AAA-TFT

R.T.: 8.793 min  
Delta R.T.: 0.000 min  
Response: 263967  
Conc: 20.40 ng/ml

Instrument :  
FID\_B  
ClientSampleId :