

Data Path : Z:\pestpcbsrv\HPCHEM1\FID\_B\Data\FB100821\  
 Data File : FB026267.D  
 Signal(s) : FID2B.CH  
 Acq On : 8 Oct 2021 16:43  
 Operator : AJ/MA  
 Sample : BSF1008S1  
 Misc : 5.01G\5.00 ML DI WATER  
 ALS Vial : 9 Sample Multiplier: 1

Instrument :  
 FID\_B  
 ClientSampleId :  
 BSF1008S1

Integration File: SAMPLE.e  
 Quant Time: Oct 08 23:16:04 2021  
 Quant Method : Z:\pestpcbsrv\HPCHEM1\FID\_B\Method\FB100821.M  
 Quant Title :  
 QLast Update : Fri Oct 08 14:30:36 2021  
 Response via : Initial Calibration  
 Integrator: ChemStation

Volume Inj. : 5 g/ml  
 Signal Phase : RTX-502.2  
 Signal Info : 60mx0.53mmx3.00um

Compound	R.T.	Response	Conc Units
-----			
System Monitoring Compounds			
5) s AAA-TFT	8.845	315161	20.913 ng/ml
Target Compounds			
1) t 2-Methylpentane	4.849	598291	34.370 ng/ml
2) t 2,2,4-Trimethylpentane	7.504	687999	33.307 ng/ml
3) t n-Heptane	7.822	275410	11.755 ng/ml
4) t Benzene	7.960	304199	11.626 ng/ml
6) t Toluene	10.654	868661	33.529 ng/ml
7) t Ethylbenzene	13.073	249813	10.938 ng/ml
8) t m-Xylene	13.204	485168	21.628 ng/ml
9) t O-Xylene	13.929	445828	21.074 ng/ml
10) t 1,2,4-Trimethylbenzene	16.197	459333	19.740 ng/ml
-----			

(f)=RT Delta > 1/2 Window

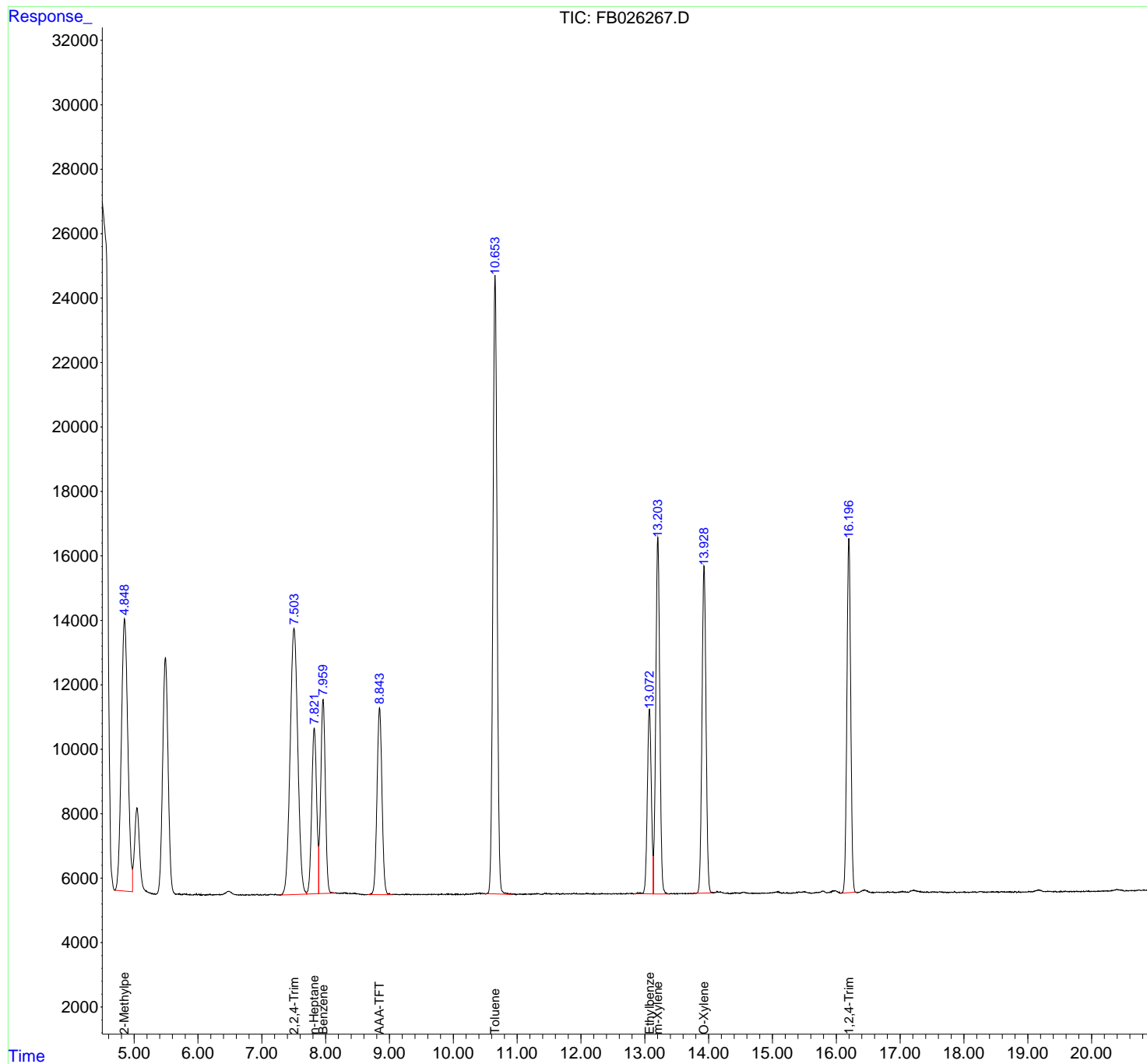
(m)=manual int.

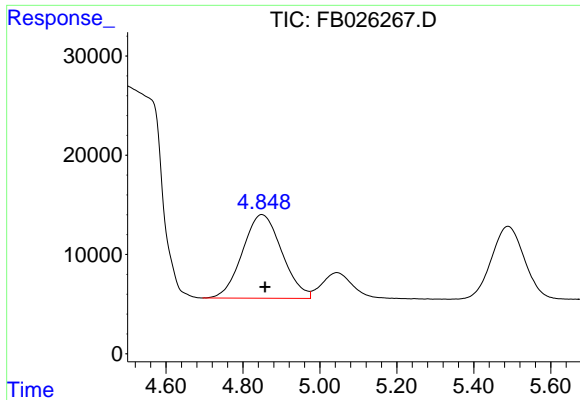
Data Path : Z:\pestpcbsrv\HPCHEM1\FID\_B\Data\FB100821\  
Data File : FB026267.D  
Signal(s) : FID2B.CH  
Acq On : 8 Oct 2021 16:43  
Operator : AJ/MA  
Sample : BSF1008S1  
Misc : 5.01G\5.00 ML DI WATER  
ALS Vial : 9 Sample Multiplier: 1

Instrument :  
FID\_B  
ClientSampleId :  
BSF1008S1

Integration File: SAMPLE.e  
Quant Time: Oct 08 23:16:04 2021  
Quant Method : Z:\pestpcbsrv\HPCHEM1\FID\_B\Method\FB100821.M  
Quant Title :  
QLast Update : Fri Oct 08 14:30:36 2021  
Response via : Initial Calibration  
Integrator: ChemStation

Volume Inj. : 5 g/ml  
Signal Phase : RTX-502.2  
Signal Info : 60mx0.53mmx3.00um

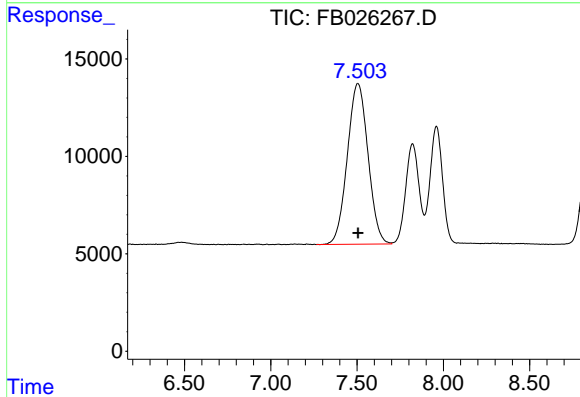




#1 2-Methylpentane

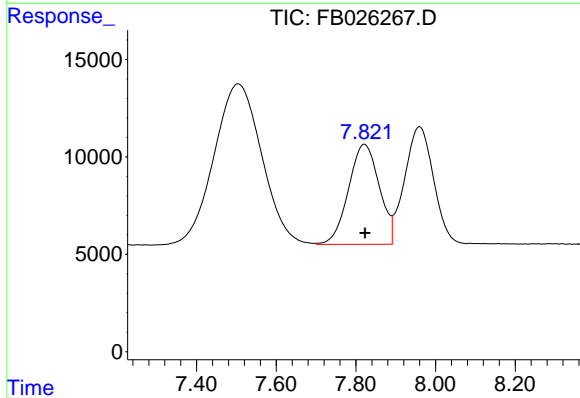
R.T.: 4.849 min  
 Delta R.T.: -0.008 min  
 Response: 598291  
 Conc: 34.37 ng/ml

Instrument :  
 FID\_B  
 ClientSampled :  
 BSF1008S1



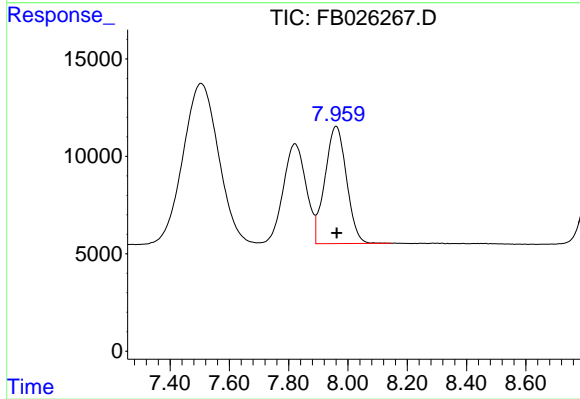
#2 2,2,4-Trimethylpentane

R.T.: 7.504 min  
 Delta R.T.: -0.002 min  
 Response: 687999  
 Conc: 33.31 ng/ml



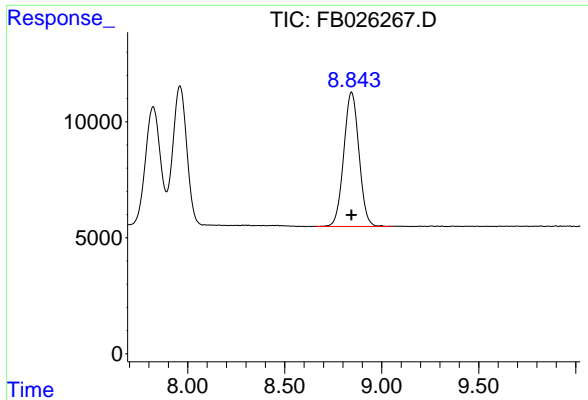
#3 n-Heptane

R.T.: 7.822 min  
 Delta R.T.: -0.001 min  
 Response: 275410  
 Conc: 11.76 ng/ml



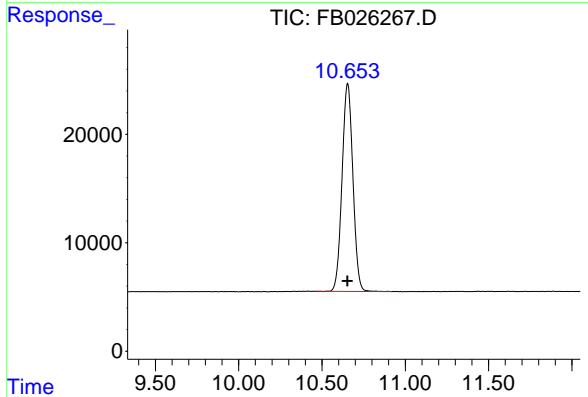
#4 Benzene

R.T.: 7.960 min  
 Delta R.T.: -0.001 min  
 Response: 304199  
 Conc: 11.63 ng/ml

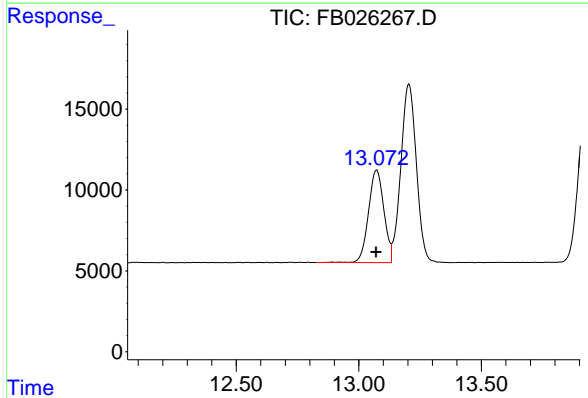


#5 AAA-TFT  
 R.T.: 8.845 min  
 Delta R.T.: 0.000 min  
 Response: 315161  
 Conc: 20.91 ng/ml

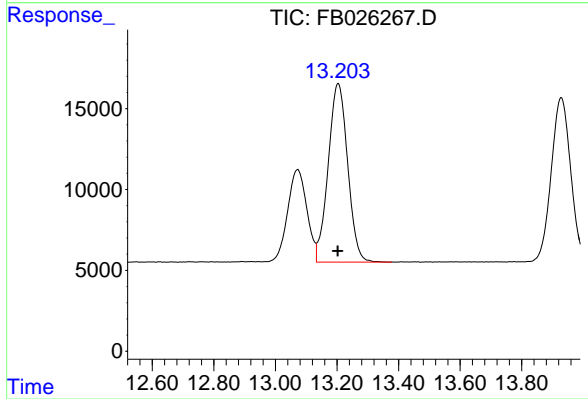
Instrument :  
 FID\_B  
 ClientSampled :  
 BSF1008S1



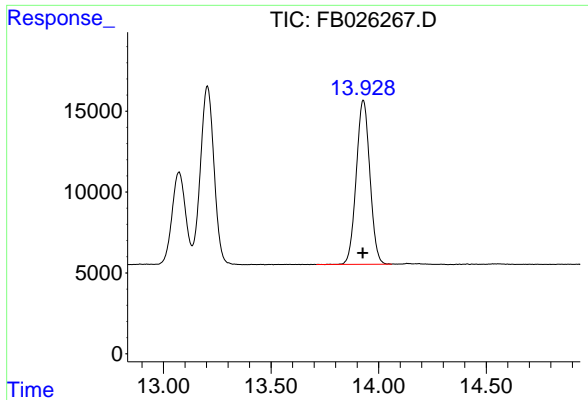
#6 Toluene  
 R.T.: 10.654 min  
 Delta R.T.: 0.001 min  
 Response: 868661  
 Conc: 33.53 ng/ml



#7 Ethylbenzene  
 R.T.: 13.073 min  
 Delta R.T.: 0.002 min  
 Response: 249813  
 Conc: 10.94 ng/ml



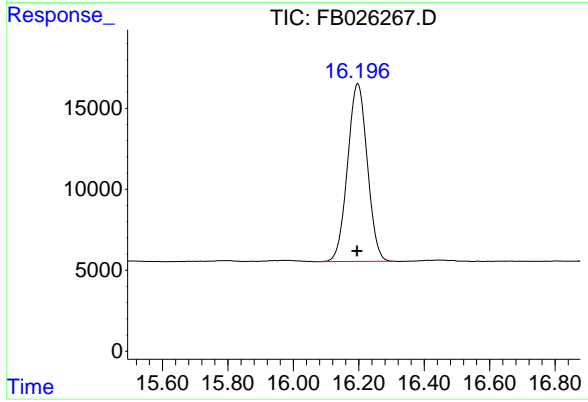
#8 m-Xylene  
 R.T.: 13.204 min  
 Delta R.T.: 0.002 min  
 Response: 485168  
 Conc: 21.63 ng/ml



#9 O-Xylene

R.T.: 13.929 min  
Delta R.T.: 0.002 min  
Response: 445828  
Conc: 21.07 ng/ml

Instrument :  
FID\_B  
ClientSampled :  
BSF1008S1



#10 1,2,4-Trimethylbenzene

R.T.: 16.197 min  
Delta R.T.: 0.003 min  
Response: 459333  
Conc: 19.74 ng/ml