

Data Path : Z:\pestpcbsrv\HPCHEM1\FID\_B\Data\FB100919\  
 Data File : FB022692.D  
 Signal(s) : FID2B.CH  
 Acq On : 9 Oct 2019 8:55  
 Operator : DD/AJ  
 Sample : 5 GRO STD  
 Misc :  
 ALS Vial : 2 Sample Multiplier: 1

Integration File: Calibration.e  
 Quant Time: Oct 09 11:11:41 2019  
 Quant Method : Z:\pestpcbsrv\HPCHEM1\FID\_B\Method\FB100919.M  
 Quant Title :  
 QLast Update : Wed Oct 09 11:10:45 2019  
 Response via : Initial Calibration  
 Integrator: ChemStation

Volume Inj. : 5 g/ml  
 Signal Phase : RTX-502.2  
 Signal Info : 60mx0.53mmx3.00um

Compound	R.T.	Response	Conc Units
-----			
System Monitoring Compounds			
5) s AAA-TFT	8.791	137507	5.696 ng/ml
Target Compounds			
1) t 2-Methylpentane	4.674	260305	7.753 ng/ml
2) t 2,2,4-Trimethylpentane	7.407	259428	7.315 ng/ml
3) t n-Heptane	7.748	88371	2.554 ng/ml
4) t Benzene	7.883	109253	2.646 ng/ml
6) t Toluene	10.624	328388	8.154 ng/ml
7) t Ethylbenzene	13.064	102353	2.642 ng/ml
8) t m-Xylene	13.197	193153	5.255 ng/ml
9) t O-Xylene	13.925	180976	5.178 ng/ml
10) t 1,2,4-Trimethylbenzene	16.204	143952	5.355 ng/ml
-----			

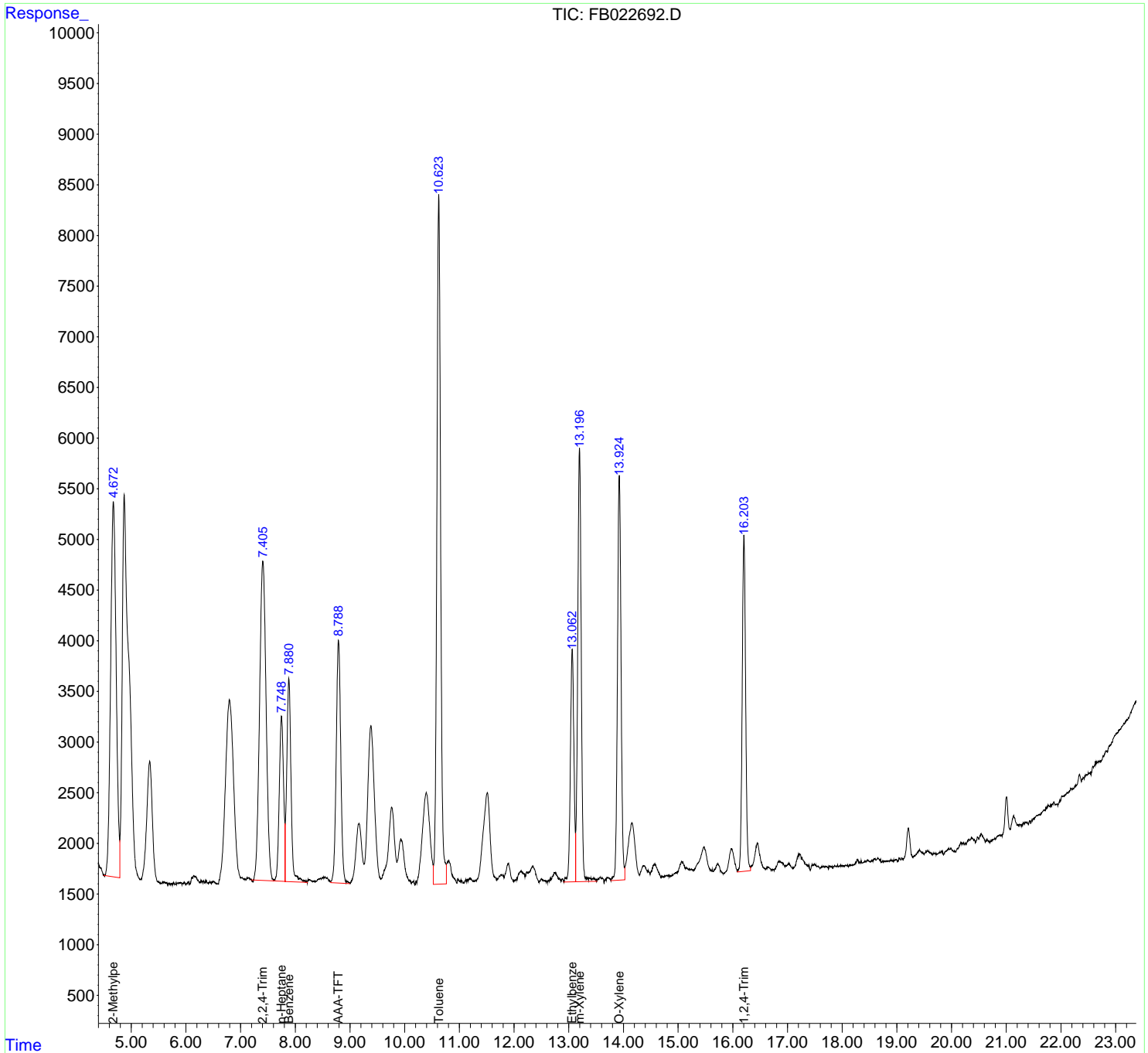
(f)=RT Delta > 1/2 Window

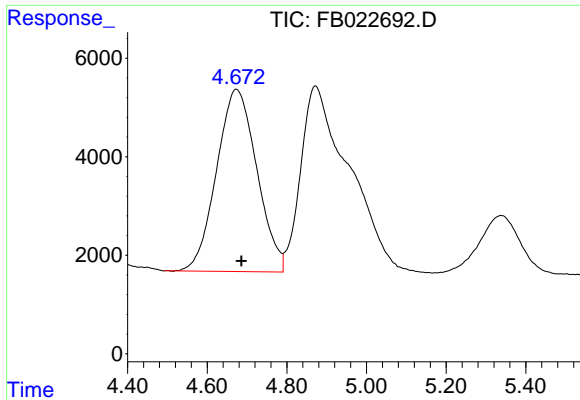
(m)=manual int.

Data Path : Z:\pestpcbsrv\HPCHEM1\FID\_B\Data\FB100919\  
Data File : FB022692.D  
Signal(s) : FID2B.CH  
Acq On : 9 Oct 2019 8:55  
Operator : DD/AJ  
Sample : 5 GRO STD  
Misc :  
ALS Vial : 2 Sample Multiplier: 1

Integration File: Calibration.e  
Quant Time: Oct 09 11:11:41 2019  
Quant Method : Z:\pestpcbsrv\HPCHEM1\FID\_B\Method\FB100919.M  
Quant Title :  
QLast Update : Wed Oct 09 11:10:45 2019  
Response via : Initial Calibration  
Integrator: ChemStation

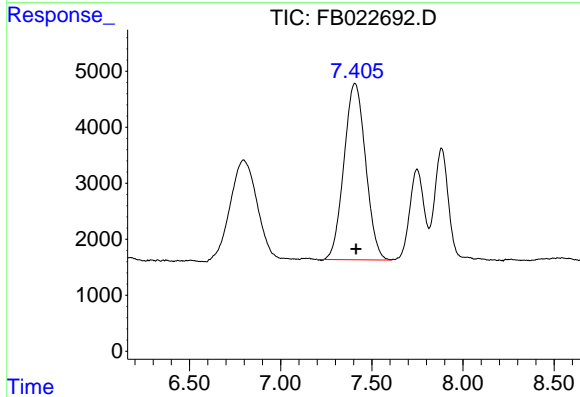
Volume Inj. : 5 g/ml  
Signal Phase : RTX-502.2  
Signal Info : 60mx0.53mmx3.00um





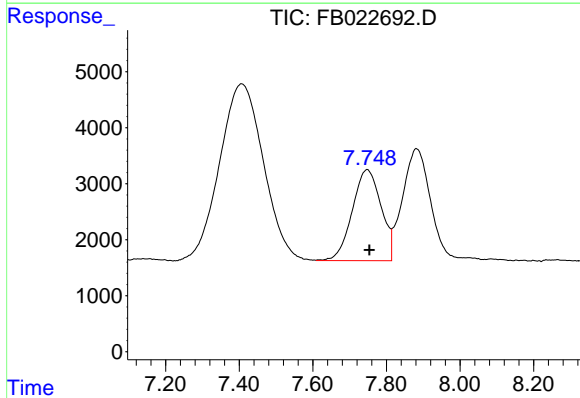
#1 2-Methylpentane

R.T.: 4.674 min  
 Delta R.T.: -0.012 min  
 Response: 260305  
 Conc: 7.75 ng/ml



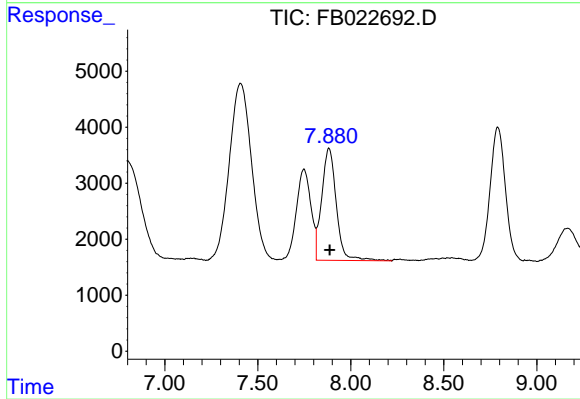
#2 2,2,4-Trimethylpentane

R.T.: 7.407 min  
 Delta R.T.: -0.005 min  
 Response: 259428  
 Conc: 7.32 ng/ml



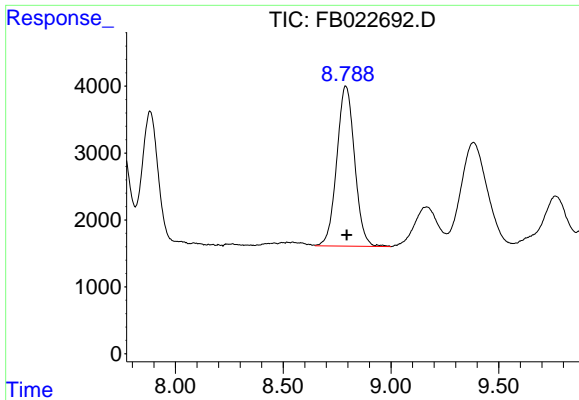
#3 n-Heptane

R.T.: 7.748 min  
 Delta R.T.: -0.005 min  
 Response: 88371  
 Conc: 2.55 ng/ml

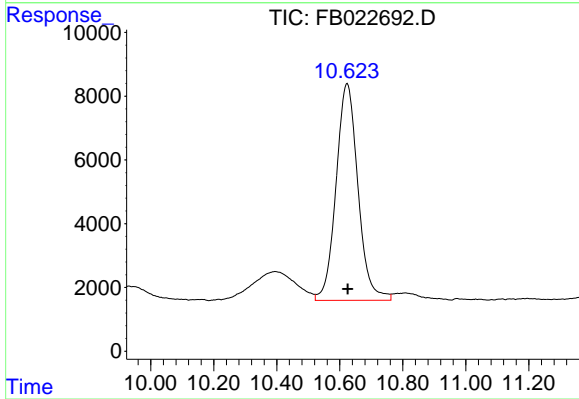


#4 Benzene

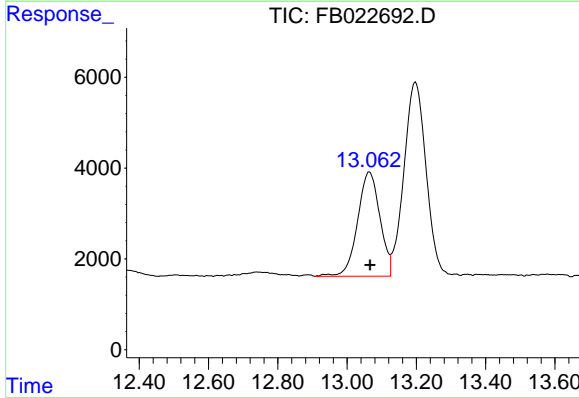
R.T.: 7.883 min  
 Delta R.T.: -0.004 min  
 Response: 109253  
 Conc: 2.65 ng/ml



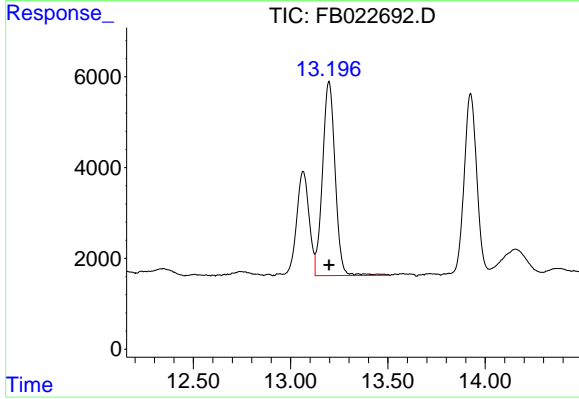
#5 AAA-TFT  
 R.T.: 8.791 min  
 Delta R.T.: -0.004 min  
 Response: 137507  
 Conc: 5.70 ng/ml



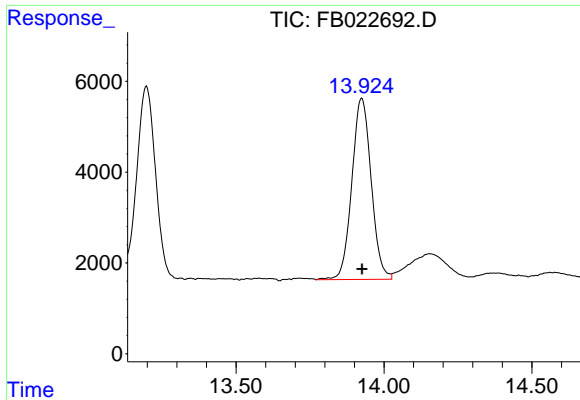
#6 Toluene  
 R.T.: 10.624 min  
 Delta R.T.: -0.001 min  
 Response: 328388  
 Conc: 8.15 ng/ml



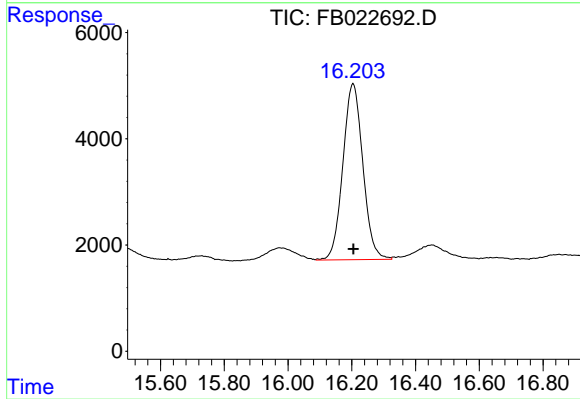
#7 Ethylbenzene  
 R.T.: 13.064 min  
 Delta R.T.: -0.002 min  
 Response: 102353  
 Conc: 2.64 ng/ml



#8 m-Xylene  
 R.T.: 13.197 min  
 Delta R.T.: -0.001 min  
 Response: 193153  
 Conc: 5.26 ng/ml



#9 O-Xylene  
R.T.: 13.925 min  
Delta R.T.: -0.001 min  
Response: 180976  
Conc: 5.18 ng/ml



#10 1,2,4-Trimethylbenzene  
R.T.: 16.204 min  
Delta R.T.: 0.000 min  
Response: 143952  
Conc: 5.35 ng/ml