

Data Path : Z:\pestpcbsrv\HPCHEM1\FID\_B\Data\FB101421\  
 Data File : FB026288.D  
 Signal(s) : FID2B.CH  
 Acq On : 14 Oct 2021 16:21  
 Operator : AJ/MA  
 Sample : 20 PPB GRO STD  
 Misc :  
 ALS Vial : 8 Sample Multiplier: 1

Instrument :  
 FID\_B  
 ClientSampleId :

Integration File: Calibration.e  
 Quant Time: Oct 14 23:33:58 2021  
 Quant Method : Z:\pestpcbsrv\HPCHEM1\FID\_B\Method\FB100821.M  
 Quant Title :  
 QLast Update : Fri Oct 08 14:30:36 2021  
 Response via : Initial Calibration  
 Integrator: ChemStation

Volume Inj. : 5 g/ml  
 Signal Phase : RTX-502.2  
 Signal Info : 60mx0.53mmx3.00um

Compound	R.T.	Response	Conc Units
-----			
System Monitoring Compounds			
5) s AAA-TFT	8.854	283809	18.833 ng/ml
Target Compounds			
1) t 2-Methylpentane	4.869	489915	28.144 ng/ml
2) t 2,2,4-Trimethylpentane	7.542	605562	29.316 ng/ml
3) t n-Heptane	7.830	191342	8.167 ng/ml
4) t Benzene	7.969	229400	8.767 ng/ml
6) t Toluene	10.665	672691	25.965 ng/ml
7) t Ethylbenzene	13.087	206075	9.023 ng/ml
8) t m-Xylene	13.219	413975	18.455 ng/ml
9) t O-Xylene	13.944	395131	18.678 ng/ml
10) t 1,2,4-Trimethylbenzene	16.215	422445	18.154 ng/ml
-----			

(f)=RT Delta > 1/2 Window

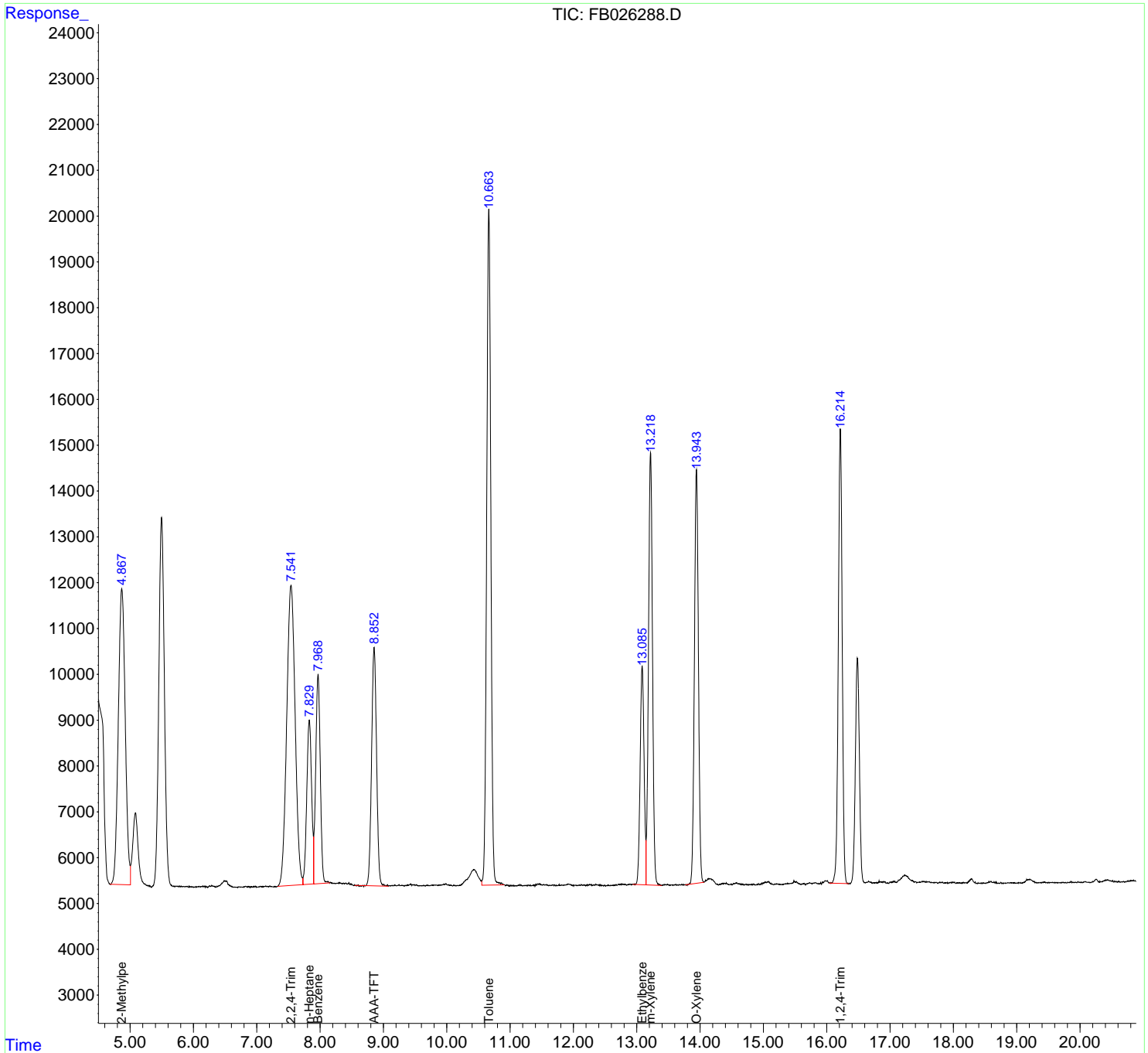
(m)=manual int.

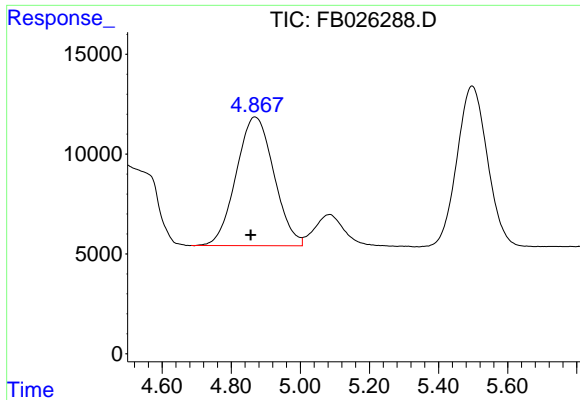
Data Path : Z:\pestpcbsrv\HPCHEM1\FID\_B\Data\FB101421\  
 Data File : FB026288.D  
 Signal(s) : FID2B.CH  
 Acq On : 14 Oct 2021 16:21  
 Operator : AJ/MA  
 Sample : 20 PPB GRO STD  
 Misc :  
 ALS Vial : 8 Sample Multiplier: 1

Instrument :  
 FID\_B  
 ClientSampled :

Integration File: Calibration.e  
 Quant Time: Oct 14 23:33:58 2021  
 Quant Method : Z:\pestpcbsrv\HPCHEM1\FID\_B\Method\FB100821.M  
 Quant Title :  
 QLast Update : Fri Oct 08 14:30:36 2021  
 Response via : Initial Calibration  
 Integrator: ChemStation

Volume Inj. : 5 g/ml  
 Signal Phase : RTX-502.2  
 Signal Info : 60mx0.53mmx3.00um

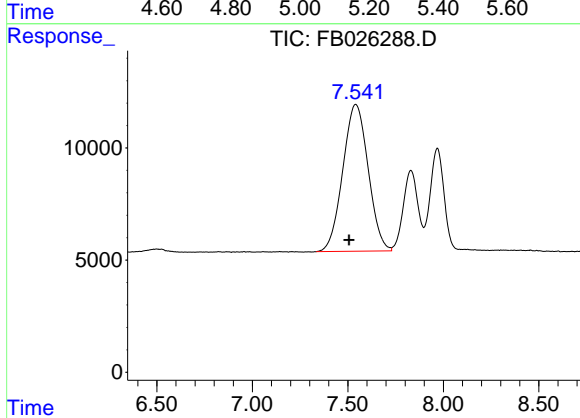




#1 2-Methylpentane

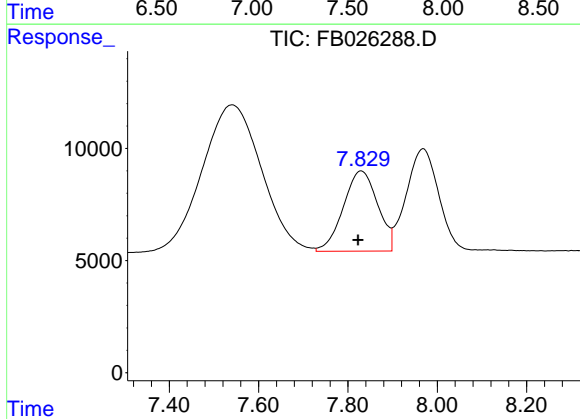
R.T.: 4.869 min  
 Delta R.T.: 0.012 min  
 Response: 489915  
 Conc: 28.14 ng/ml

Instrument :  
 FID\_B  
 ClientSampleId :



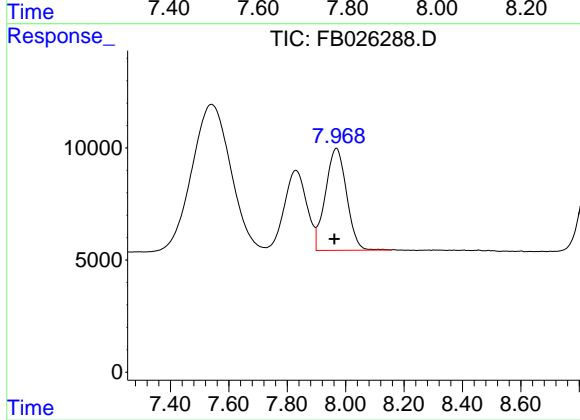
#2 2,2,4-Trimethylpentane

R.T.: 7.542 min  
 Delta R.T.: 0.036 min  
 Response: 605562  
 Conc: 29.32 ng/ml



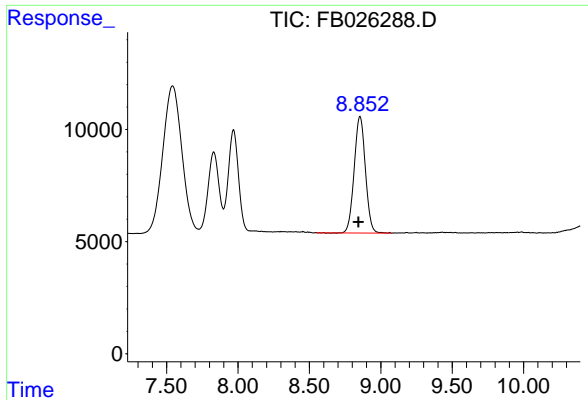
#3 n-Heptane

R.T.: 7.830 min  
 Delta R.T.: 0.007 min  
 Response: 191342  
 Conc: 8.17 ng/ml



#4 Benzene

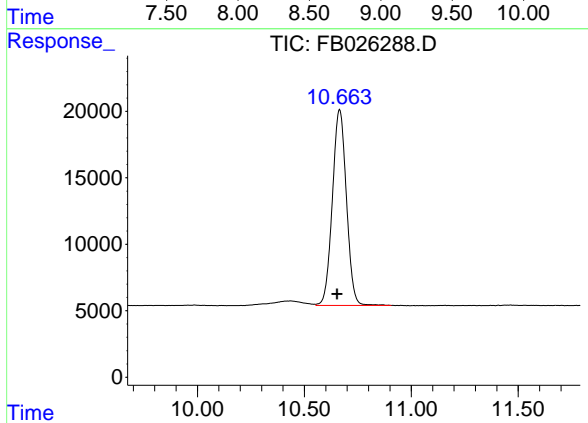
R.T.: 7.969 min  
 Delta R.T.: 0.008 min  
 Response: 229400  
 Conc: 8.77 ng/ml



#5 AAA-TFT

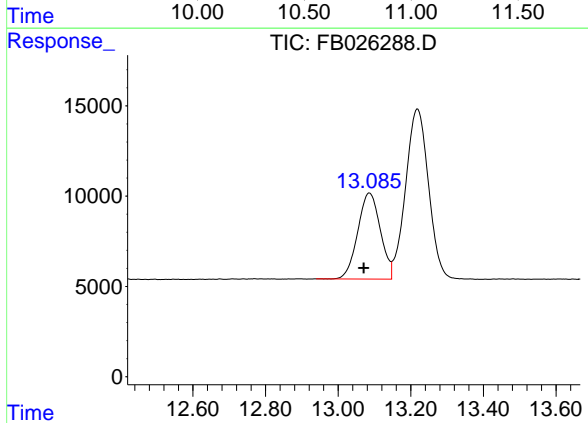
R.T.: 8.854 min  
 Delta R.T.: 0.009 min  
 Response: 283809  
 Conc: 18.83 ng/ml

Instrument :  
 FID\_B  
 ClientSampled :



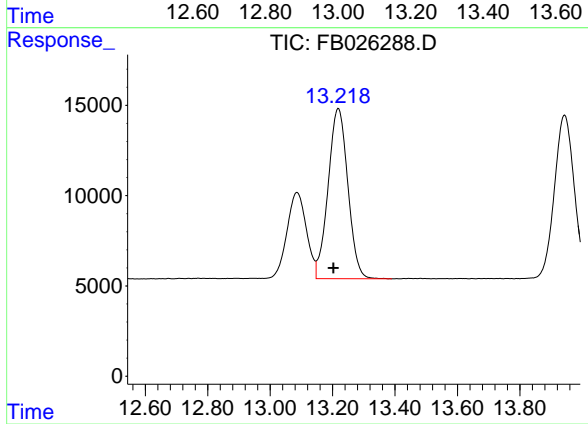
#6 Toluene

R.T.: 10.665 min  
 Delta R.T.: 0.012 min  
 Response: 672691  
 Conc: 25.97 ng/ml



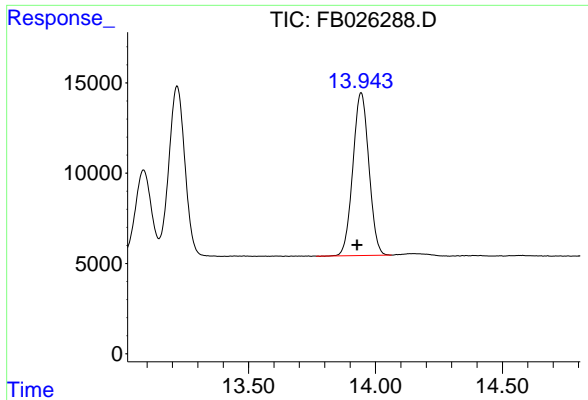
#7 Ethylbenzene

R.T.: 13.087 min  
 Delta R.T.: 0.016 min  
 Response: 206075  
 Conc: 9.02 ng/ml



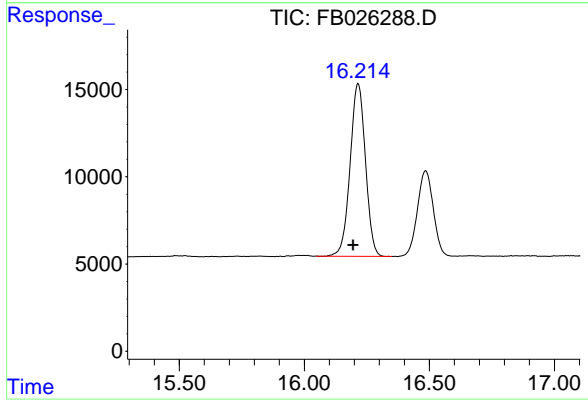
#8 m-Xylene

R.T.: 13.219 min  
 Delta R.T.: 0.016 min  
 Response: 413975  
 Conc: 18.45 ng/ml



#9 O-Xylene  
R.T.: 13.944 min  
Delta R.T.: 0.017 min  
Response: 395131  
Conc: 18.68 ng/ml

Instrument :  
FID\_B  
ClientSampled :



#10 1,2,4-Trimethylbenzene  
R.T.: 16.215 min  
Delta R.T.: 0.021 min  
Response: 422445  
Conc: 18.15 ng/ml