

Data Path : Z:\pestpcbsrv\HPCHEM1\FID_B\Data\FB101619\
 Data File : FB022729.D
 Signal(s) : FID2B.CH
 Acq On : 16 Oct 2019 17:16
 Operator : DD/AJ
 Sample : BSF1016W1
 Misc :
 ALS Vial : 17 Sample Multiplier: 1

Instrument :
 FID_B
 ClientSampleId :
 BSF1016W1

Integration File: Calibration.e
 Quant Time: Oct 17 02:08:58 2019
 Quant Method : Z:\pestpcbsrv\HPCHEM1\FID_B\Method\FB101619.M
 Quant Title :
 QLast Update : Wed Oct 16 15:04:00 2019
 Response via : Initial Calibration
 Integrator: ChemStation

Volume Inj. : 5 g/ml
 Signal Phase : RTX-502.2
 Signal Info : 60mx0.53mmx3.00um

Compound	R.T.	Response	Conc Units

System Monitoring Compounds			
5) s AAA-TFT	8.802	435350	17.205 ng/ml
Target Compounds			
1) t 2-Methylpentane	4.692	849625	25.000 ng/ml
2) t 2,2,4-Trimethylpentane	7.420	894411	24.580 ng/ml
3) t n-Heptane	7.761	297483	8.153 ng/ml
4) t Benzene	7.895	397966	9.014 ng/ml
6) t Toluene	10.634	1115034	25.871 ng/ml
7) t Ethylbenzene	13.074	355671	8.757 ng/ml
8) t m-Xylene	13.207	670304	17.421 ng/ml
9) t O-Xylene	13.935	643713	17.674 ng/ml
10) t 1,2,4-Trimethylbenzene	16.215	507667	17.816 ng/ml

(f)=RT Delta > 1/2 Window

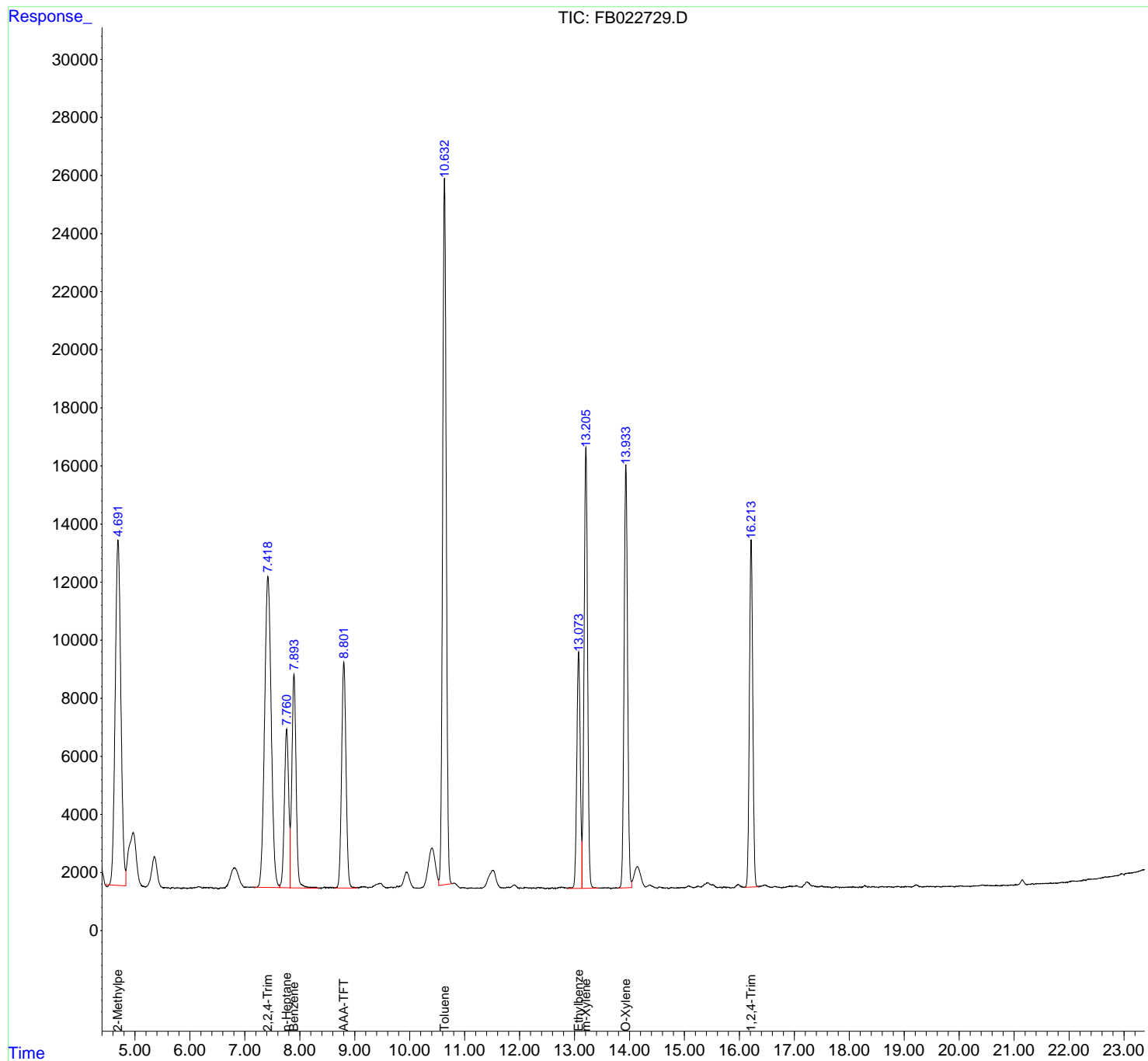
(m)=manual int.

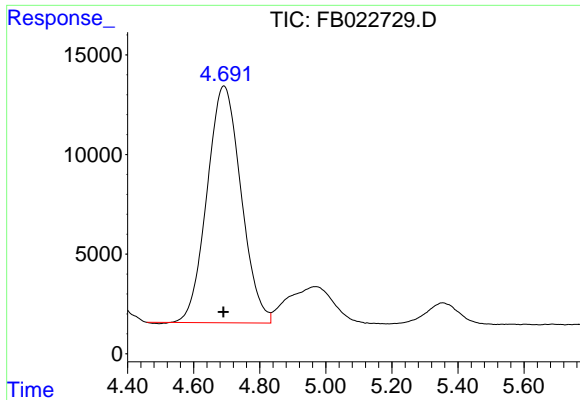
Data Path : Z:\pestpcbsrv\HPCHEM1\FID_B\Data\FB101619\
Data File : FB022729.D
Signal(s) : FID2B.CH
Acq On : 16 Oct 2019 17:16
Operator : DD/AJ
Sample : BSF1016W1
Misc :
ALS Vial : 17 Sample Multiplier: 1

Instrument :
FID_B
ClientSampled :
BSF1016W1

Integration File: Calibration.e
Quant Time: Oct 17 02:08:58 2019
Quant Method : Z:\pestpcbsrv\HPCHEM1\FID_B\Method\FB101619.M
Quant Title :
QLast Update : Wed Oct 16 15:04:00 2019
Response via : Initial Calibration
Integrator: ChemStation

Volume Inj. : 5 g/ml
Signal Phase : RTX-502.2
Signal Info : 60mx0.53mmx3.00um

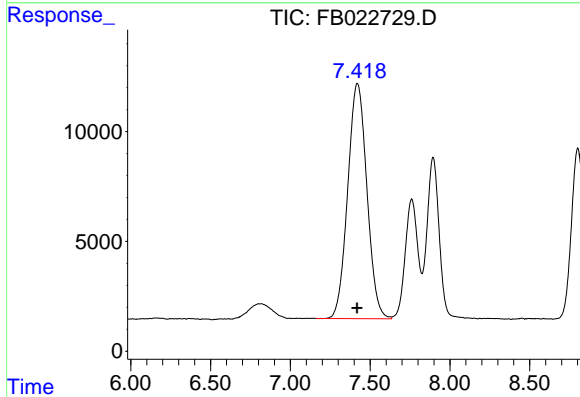




#1 2-Methylpentane

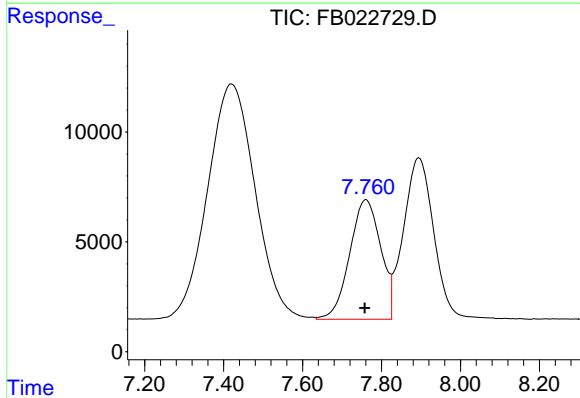
R.T.: 4.692 min
 Delta R.T.: 0.002 min
 Response: 849625
 Conc: 25.00 ng/ml

Instrument :
 FID_B
 ClientSampleId :
 BSF1016W1



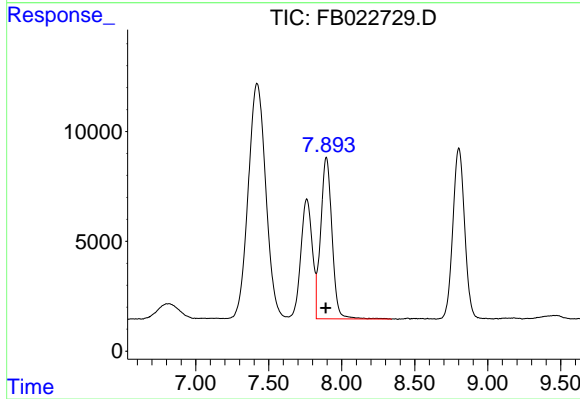
#2 2,2,4-Trimethylpentane

R.T.: 7.420 min
 Delta R.T.: 0.003 min
 Response: 894411
 Conc: 24.58 ng/ml



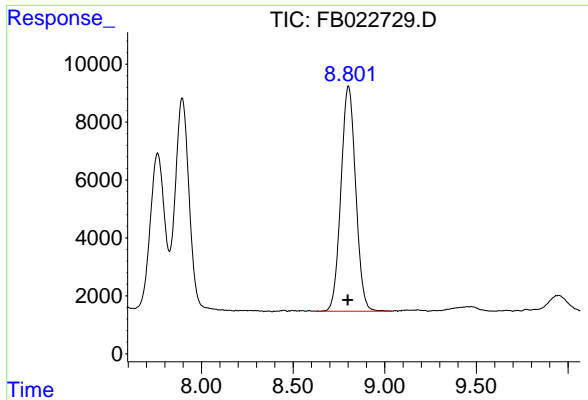
#3 n-Heptane

R.T.: 7.761 min
 Delta R.T.: 0.004 min
 Response: 297483
 Conc: 8.15 ng/ml



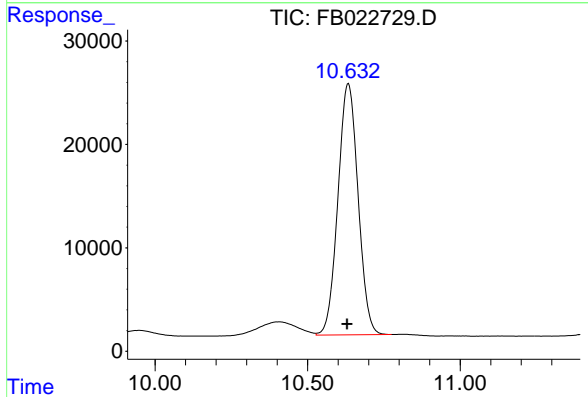
#4 Benzene

R.T.: 7.895 min
 Delta R.T.: 0.003 min
 Response: 397966
 Conc: 9.01 ng/ml

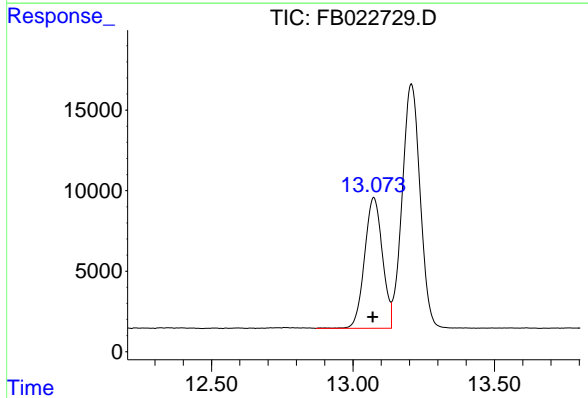


#5 AAA-TFT
 R.T.: 8.802 min
 Delta R.T.: 0.004 min
 Response: 435350
 Conc: 17.20 ng/ml

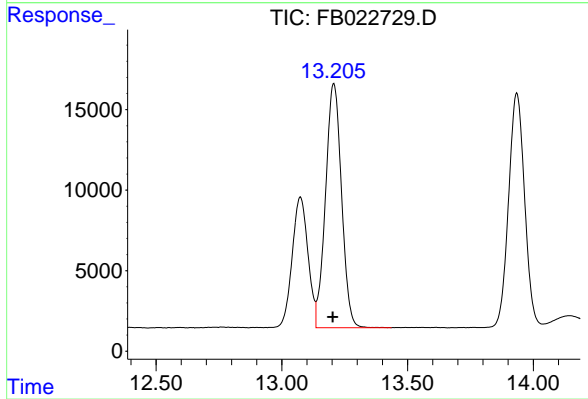
Instrument :
 FID_B
 ClientSampled :
 BSF1016W1



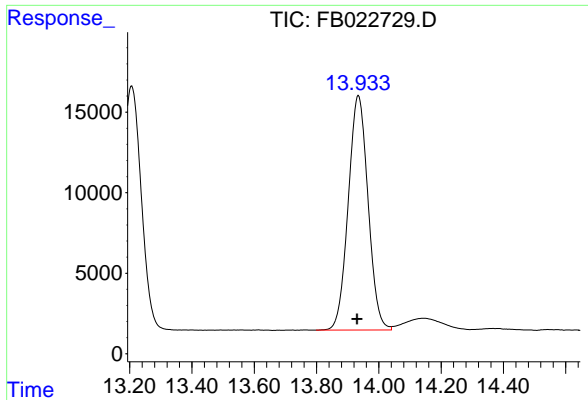
#6 Toluene
 R.T.: 10.634 min
 Delta R.T.: 0.004 min
 Response: 1115034
 Conc: 25.87 ng/ml



#7 Ethylbenzene
 R.T.: 13.074 min
 Delta R.T.: 0.004 min
 Response: 355671
 Conc: 8.76 ng/ml

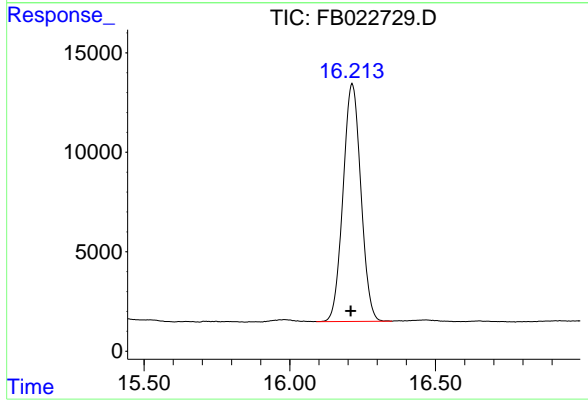


#8 m-Xylene
 R.T.: 13.207 min
 Delta R.T.: 0.004 min
 Response: 670304
 Conc: 17.42 ng/ml



#9 O-Xylene
R.T.: 13.935 min
Delta R.T.: 0.004 min
Response: 643713
Conc: 17.67 ng/ml

Instrument :
FID_B
ClientSampleId :
BSF1016W1



#10 1,2,4-Trimethylbenzene
R.T.: 16.215 min
Delta R.T.: 0.005 min
Response: 507667
Conc: 17.82 ng/ml